

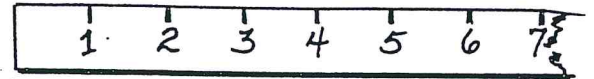
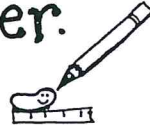
Inside a Seed

Scientist: _____



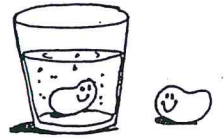
1. What does the dry seed look like? _____

2. How big is the dry seed? Trace the seed on the ruler.



3. Soak the dry seed in water overnight.

How is the wet seed different from a dry seed?



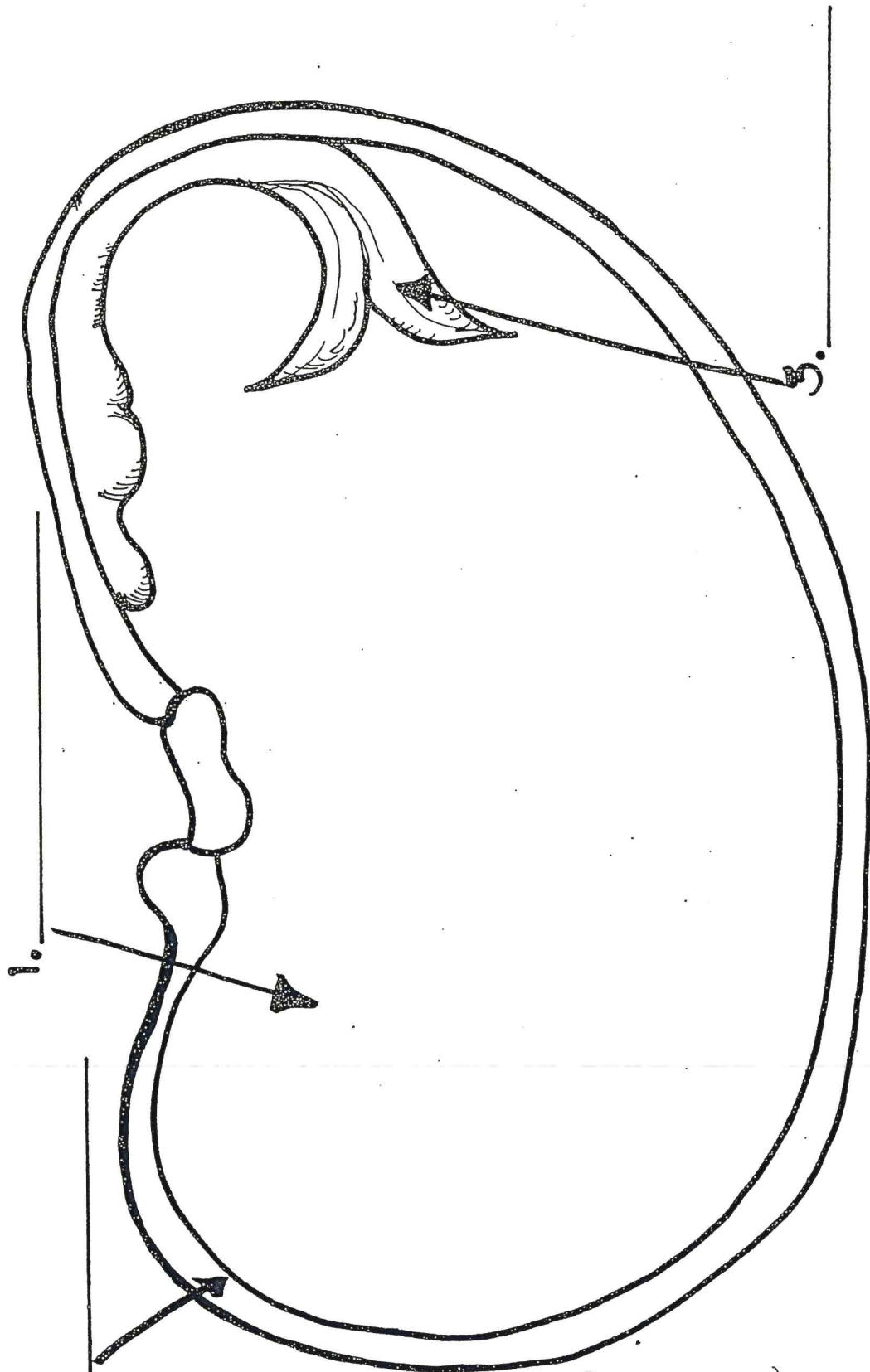
4. Split the seed in half. What does it look like on the inside? Look for the tiny plant called the embryo.

5. Why do you think there is so much food stored for the tiny plant (embryo)?



Inside a Seed

Scientist

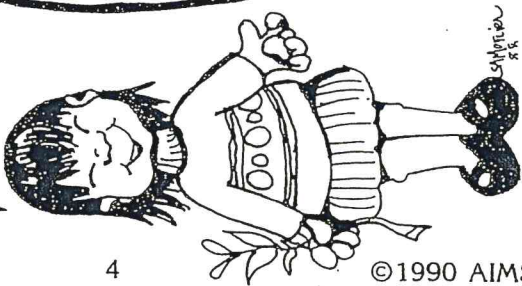


1.

2.

3.

Split your seed in half.



Label the parts: food storage, seed coat, little plant (embryo).