



Idaho Mastery Education

Kelly Brady

Director, Instructional Support for Student-Centered Learning



Supporting Schools and Students to Achieve

SHERRI YBARRA, ED.S., SUPERINTENDENT OF PUBLIC INSTRUCTION

4/8/2019

Idaho Mastery Education - Origin



**Governor's K -12
Task Force**

**Committee of
Educators**

**Idaho Mastery
Education Network
(IMEN)**

+

House Bill 110

**Statewide
Awareness
Campaign**

*19 Incubators, consisting of
32 schools*



Statewide
Outreach &
Communication

Idaho Mastery
Education Network
(IMEN)

Sustainability
Plan for
Statewide Scaling

*Open to Idaho
Districts/Schools*

Idaho Mastery Education - Definition



A student-centered educational system that promotes relevant learning while allowing flexibility in both time and teaching methods, where student success is the only option.

Goals of Idaho Mastery Education

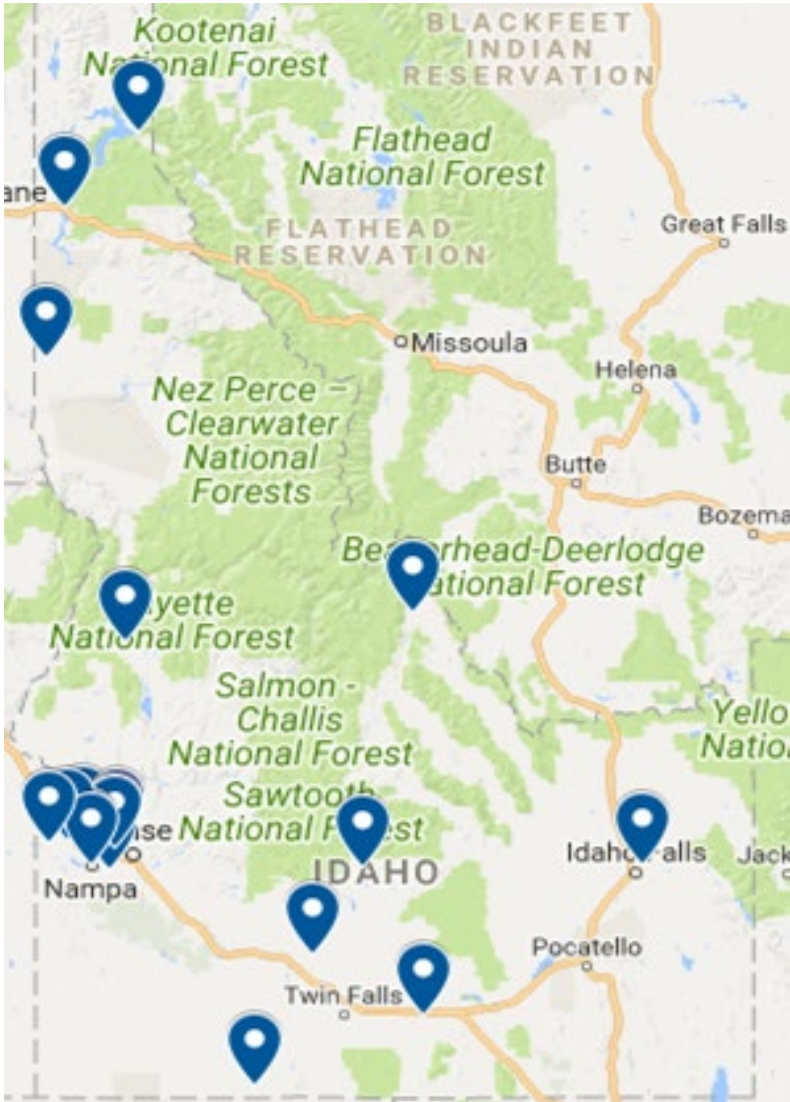


Students demonstrate mastery of key content and skills.

Students play a greater role – and be more invested - in their learning.

Students seek out and engage with content more deeply, meaningfully, and productively.

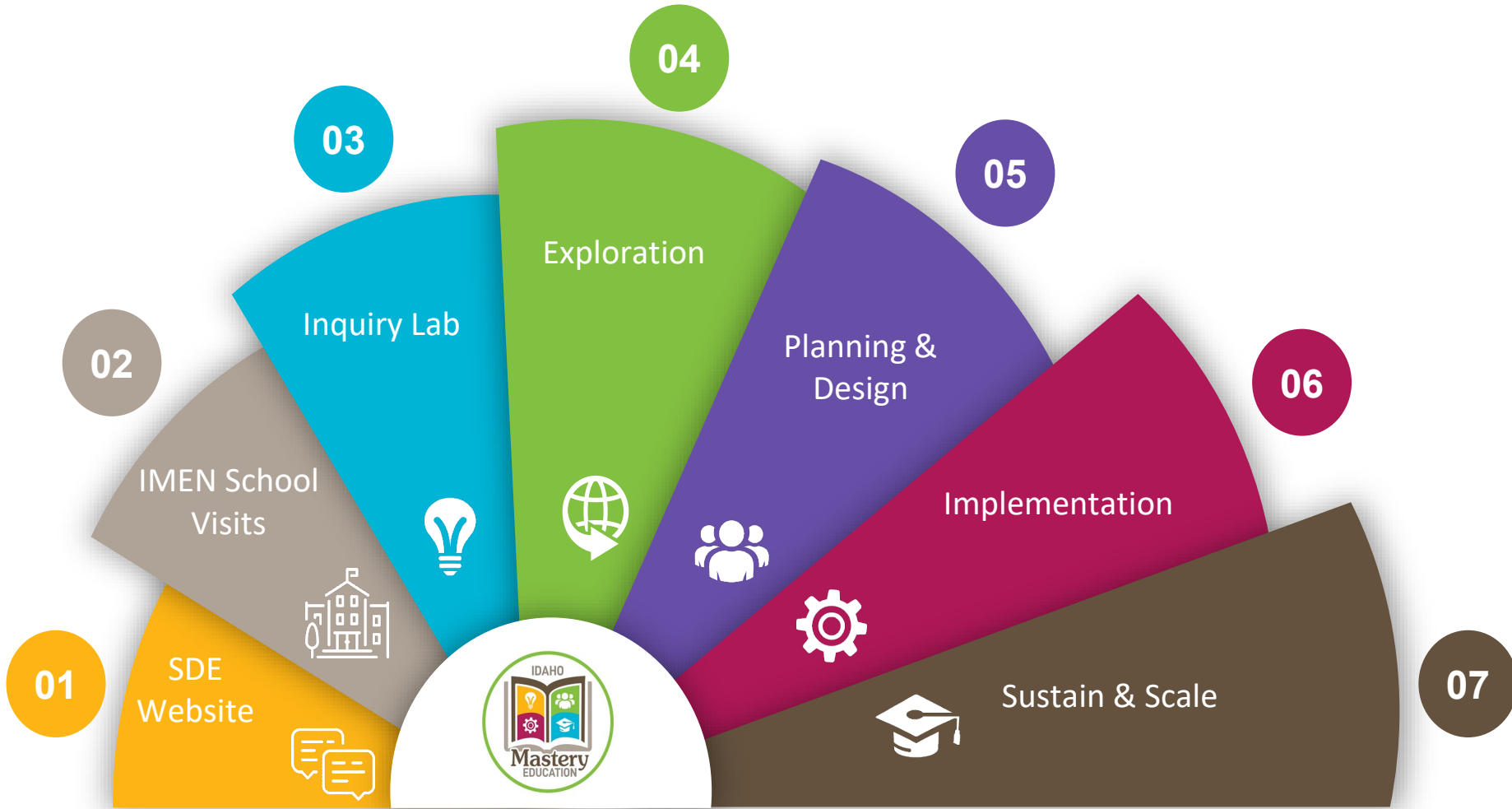
Idaho Mastery Education Network - Cohort 1



To see our Idaho Mastery Education Network in action, visit <http://www.sde.idaho.gov/mastery-ed/>

- Three Creek School District
- Venture High School/Coeur d'Alene School District
- Silver Creek Alternative High School/Blaine School District
- Nampa School District
- North Valley Academy Charter School/Gooding
- American Heritage Charter School/Idaho Falls
- Meadow Valley School District
- Moscow School District
- Rocky Mountain Middle School/Bonneville School District
- West Ada Academies/West Ada District
- Meridian Technical Charter High School/West Ada District
- Wilder School District
- Notus School District
- Rivervue Academy/Vallivue School District
- Salmon Junior-Senior High School/Salmon School District
- Middleton Academy/Middleton School District
- Union High School/Nampa School District
- Ross Elementary, Teed Elementary, Kuna Middle School, and Initial Point Alternative High School/Kuna School District
- Clark Fork Jr. and Sr. High School/Lake Pend Oreille School District

Idaho Mastery Education Network - 7 Levels of Support



<https://tinyurl.com/IdahoMasteryEducationSupport>

Idaho Mastery Education Network - 7 Levels of Support



Consistent Statewide Professional Development

Technical Assistance

Statewide Communication and Outreach

System-wide Network Participation and Support

Policy and Strategic System Support



Idaho Mastery Education Network - Successes



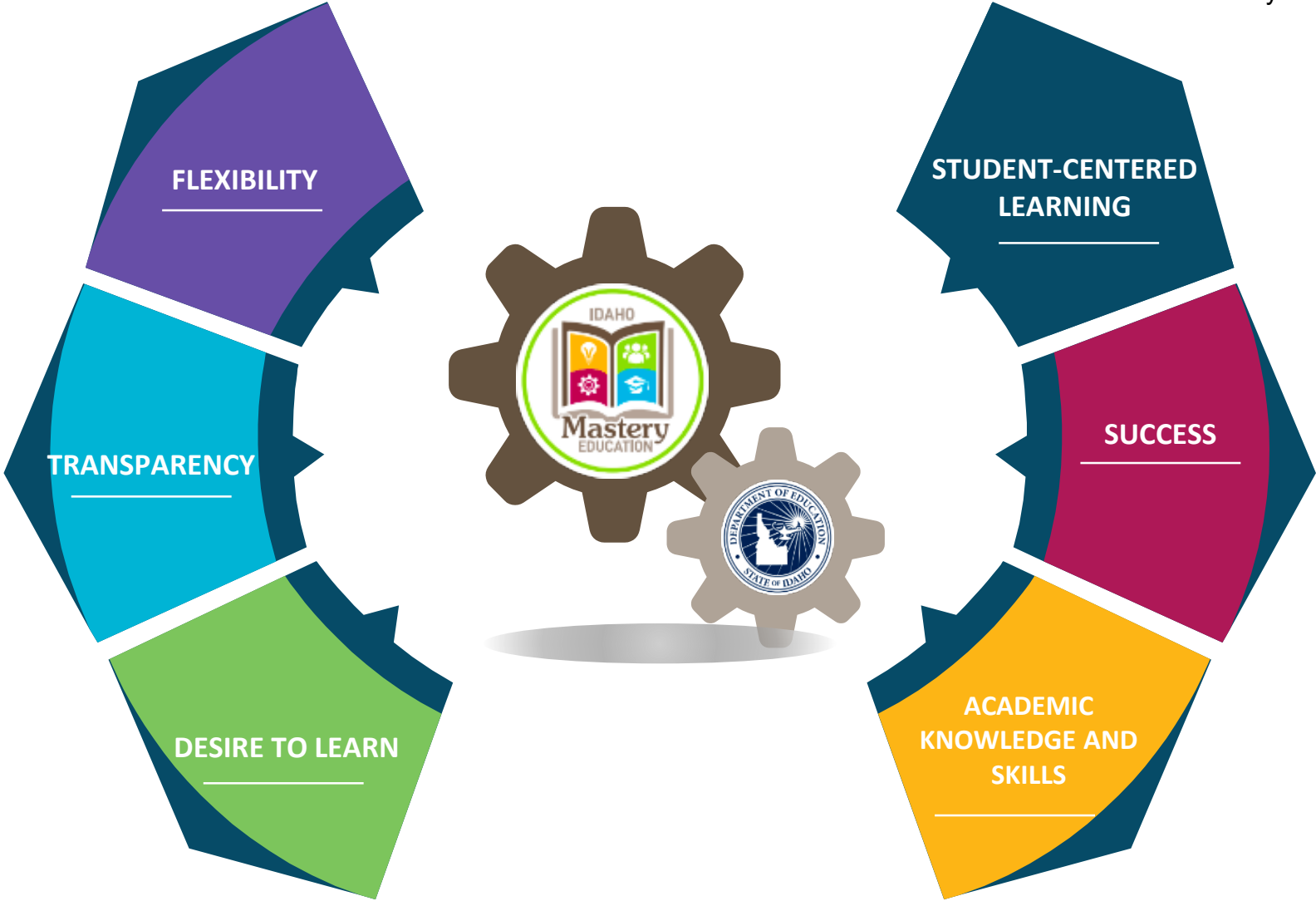
- **Innovation/Flexibility**
- **Student-Centered**
- **Better Outcomes**



Idaho Mastery Education Network - Benefits



Source: IMEN Study 2017



Why is Mastery Education a Priority in Idaho?



Mastery Education Will Prepare Idaho Students for a Rapidly Changing World

Students will demonstrate mastery of core academic content.

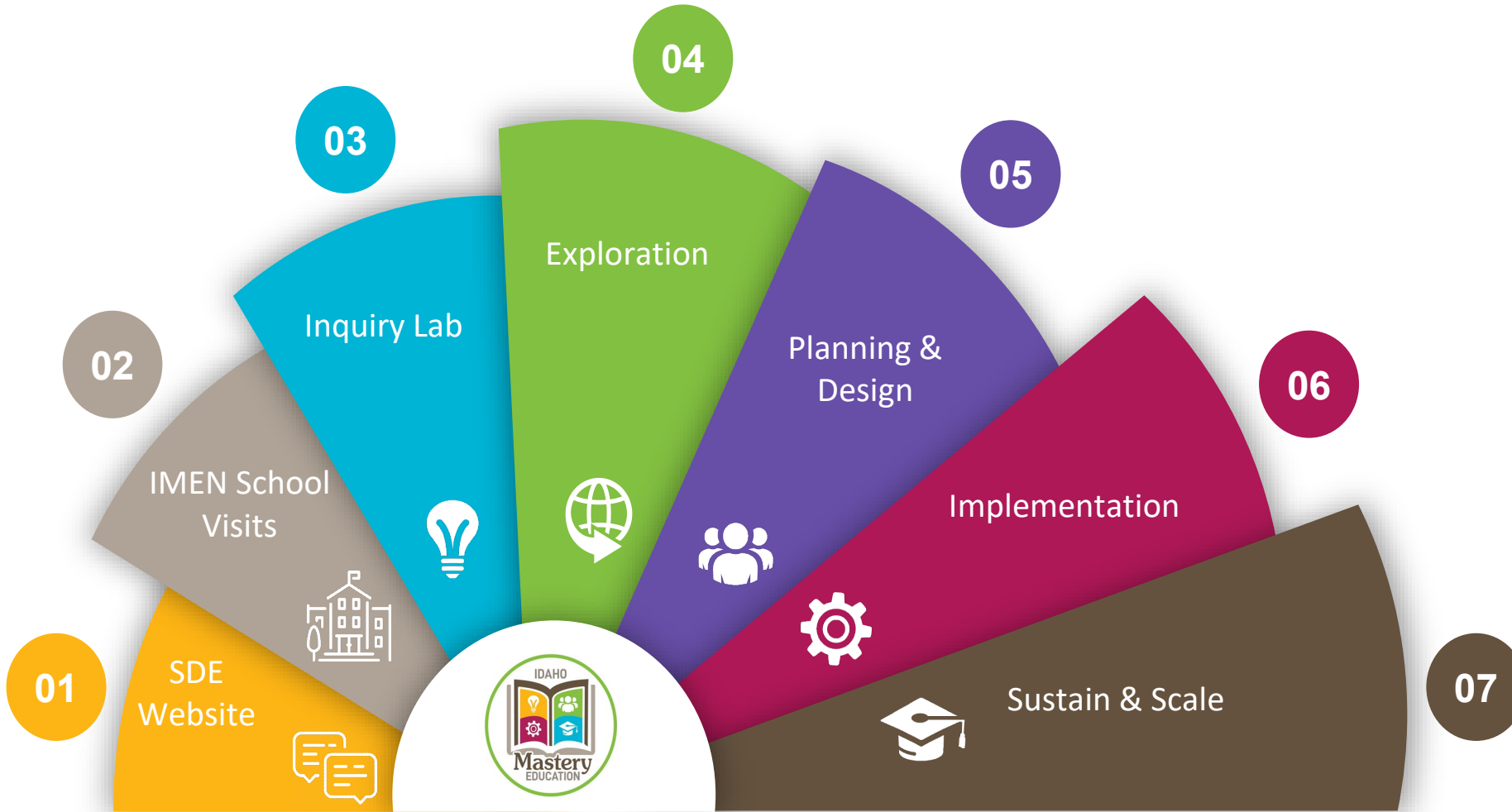
Schools and teachers are given the flexibility needed to meet the needs of our diverse student population.

Students will learn how to apply knowledge

Instructional practices focus on helping students communicate effectively, work collaboratively and solve complex problems.



Idaho Mastery Education Network - 7 Levels of Support



<https://tinyurl.com/IdahoMasteryEducationSupport>

Questions

Kelly Brady | Director, Instructional Support for Student-Centered

Learning

Idaho State Department of Education

650 W State Street, Boise, ID 83702

208 332 6800

email@sde.idaho.gov

www.sde.idaho.gov



Supporting Schools and Students to Achieve

SHERRI YBARRA, ED.S., SUPERINTENDENT OF PUBLIC INSTRUCTION