

## **Section IV**

### **ANNUAL STUDENT INCIDENT REPORT SCHOOL CAMPUS AND SCHOOL ACTIVITIES**

#### **Year-End Results and 1998-2006 Comparisons**

##### **Distribution, Use and Possession, Suspensions and Expulsions**

**Tobacco      Alcohol      Drugs**

#### **Student Disciplinary Incidents and Consequences**

**Harassment**

**Bullying**

**Vandalism**

**Fights**

**Insubordination**

**Weapons**

**In School Suspensions**

**Out of School Suspensions**

**Truancies**

**Student Expulsions**

**1998-2006 Comparison of Incidents**

#### **Incident Report Glossary**

**Persistently Dangerous (Idaho Unsafe School Choice Option Policy)**

**Persistently Dangerous Schools Glossary**

## **SAFE AND DRUG-FREE SCHOOLS DISCIPLINE INCIDENT DATA**

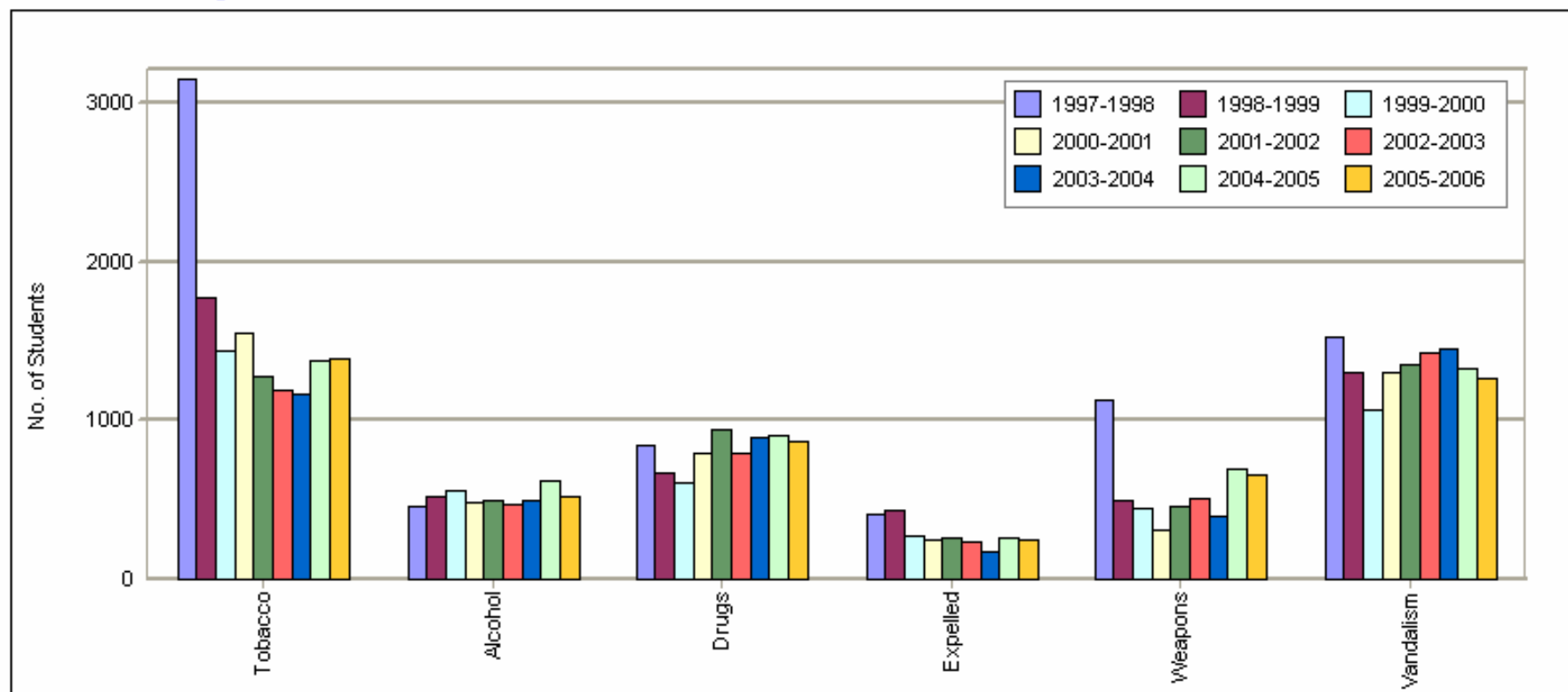
The Annual Incident Report is a web-based report providing a summary of incident data reported by Idaho's school districts. The reports submitted by Local Educational Agencies (LEAs) also are used to supply data to the United States Department of Education as required by the Federal Gun-Free Schools Act and the Safe and Drug-Free Schools and Communities Act. This report covers reported discipline incidents that occurred in Idaho's public schools between July 1, 2005, and June 30, 2006.

As required by Title IX Part E, Subpart 2, Sec. 9532, "Unsafe School Choice Option," each state identifies incidents that meet the criteria of persistently dangerous schools. The 2002-03 school year is the first year for reporting these incidents.

The information contained in this report was provided to the State Department of Education using locally developed collection and reporting procedures. The final submittal of the reports was done on the web-based, on-line reporting system. This is the first time for implementing the on-line reporting system. The responsibility to accurately report incidents rests with school administrators. Each school district determines its own threshold for reporting incidents of violence. This policy is consistent with school policies on discipline, where each school district establishes its own list of infractions and the sanctions imposed for the violation. School district superintendents certify by signature that the information provided is true and correct. Questions about the information should be directed to local school officials.

## School Campus and School Activities Incident Report Comparison for 1997-98, 1998-99, 1999-00, 2000-01, 2001-02, 2002-03, 2003-04, 2004-05, 2005-06

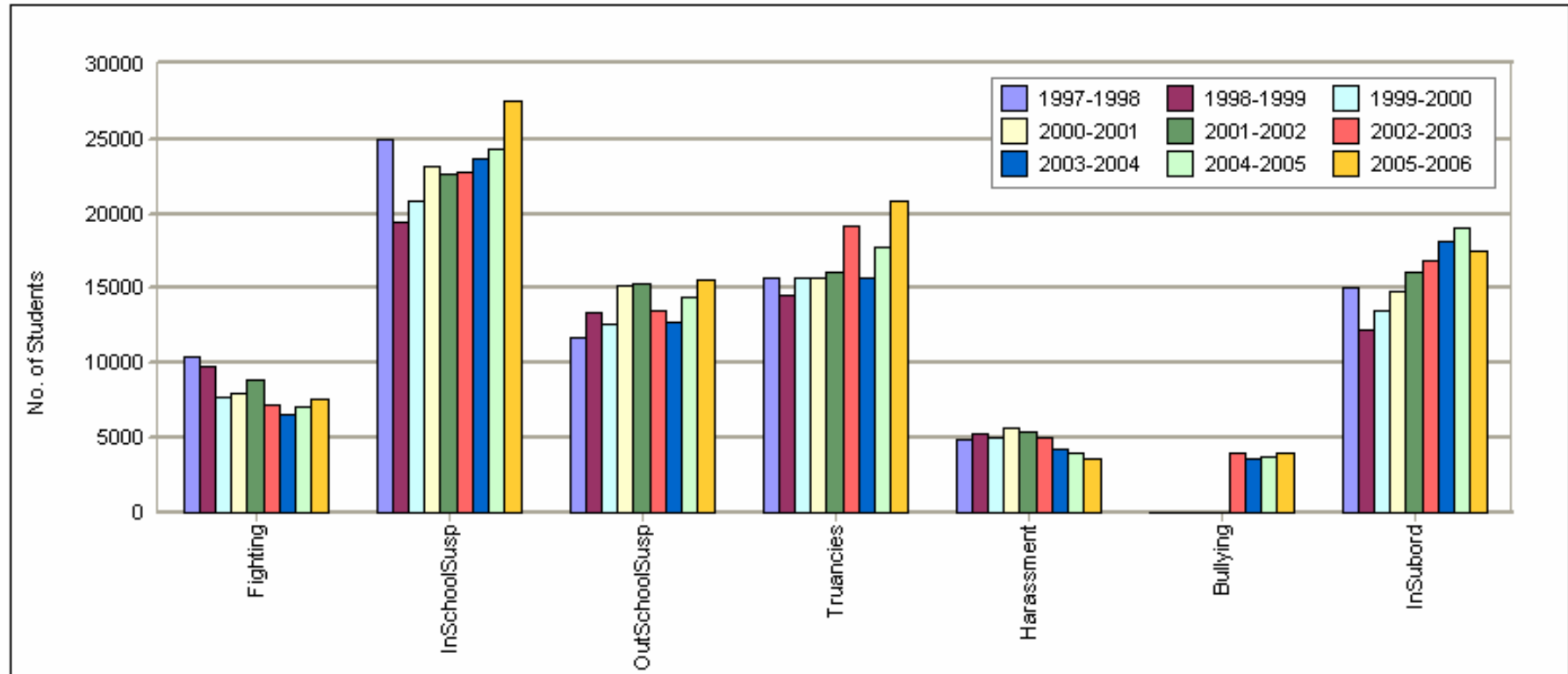
No. of students range from 0 to 3,000



Years	Tobacco	Alcohol	Drugs	Expelled	Weapons	Vandalism	Enrollment
<b>1997-1998</b>	3151	458	848	406	1132	1528	244403
<b>1998-1999</b>	1771	526	665	435	500	1297	244643
<b>1999-2000</b>	1441	553	608	269	444	1063	245226
<b>2000-2001</b>	1554	481	788	245	311	1299	245009
<b>2001-2002</b>	1277	499	940	265	464	1347	246415
<b>2002-2003</b>	1196	469	795	232	511	1430	248515
<b>2003-2004</b>	1168	491	891	178	394	1454	249368
<b>2004-2005</b>	1373	617	900	258	689	1323	253421
<b>2005-2006</b>	1395	524	865	253	652	1270	259123

**School Campus and School Activities Incident Report Comparison for  
1997-98, 1998-99, 1999-00, 2000-01, 2001-02, 2002-03, 2003-04, 2004-05, 2005-06**

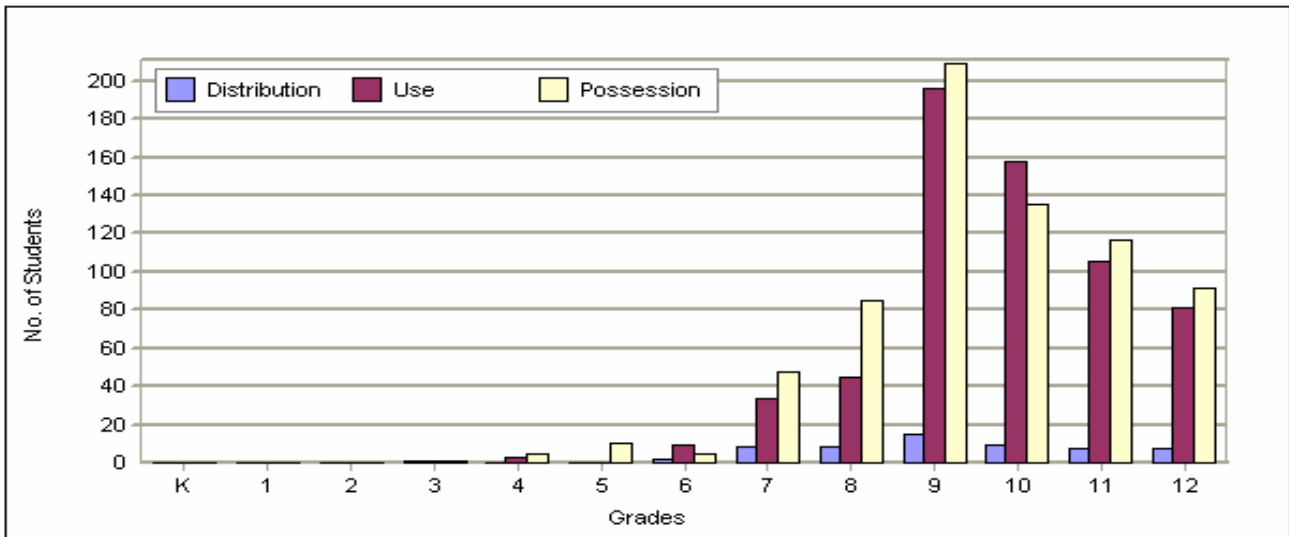
No. of students range from 0 to 30,000



Years	Fighting	InSchool Susp	OutSchool Susp	Truancies	Harassment	Bullying	InSubord	Enrollment
1997-1998	10400	24972	11764	15670	4900	N/A	15039	244403
1998-1999	9750	19494	13408	14590	5248	N/A	12225	244643
1999-2000	7717	20846	12584	15729	4968	N/A	13541	245226
2000-2001	8029	23162	15245	15684	5656	N/A	14833	245009
2001-2002	8836	22718	15352	16074	5352	N/A	16037	246415
2002-2003	7236	22794	13532	19206	5035*	3980*	16851	248515
2003-2004	6537	23674	12777	15656	4312*	3560*	18170	249368
2004-2005	7118	24294	14411	17713	4037*	3723*	19000	253421
2005-2006	7658	27497	15558	20820	3573*	4011*	17483	259123

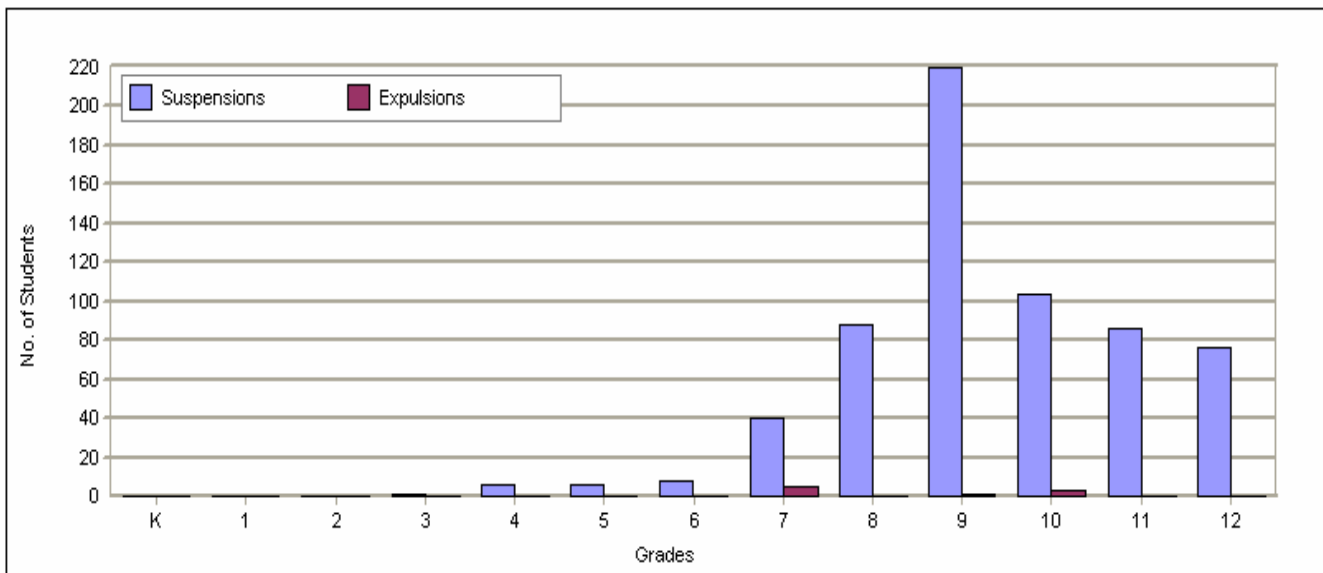
\* Since 2002-2003, Harassment has been divided into two categories Harassment and Bullying.

**School Campus and School Activities  
2005-2006 Student Tobacco Distribution, Use and Possession**



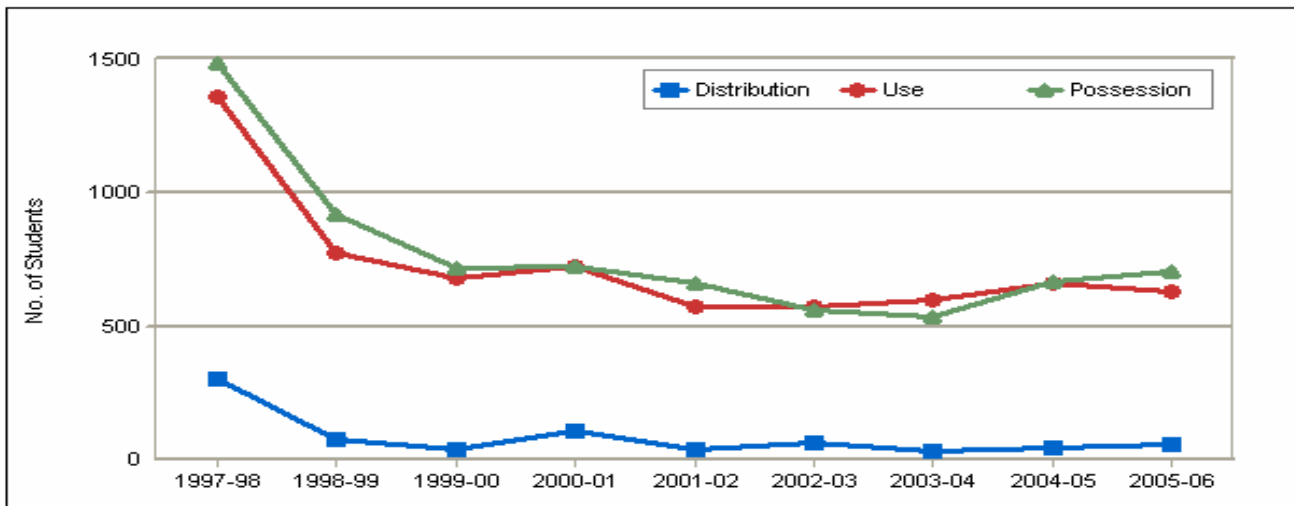
Grade	K	1	2	3	4	5	6	7	8	9	10	11	12	Totals
<b>Distribution</b>	0	0	0	1	0	0	2	8	8	15	9	7	7	57
<b>Use</b>	0	0	0	1	3	0	9	34	45	196	158	105	81	632
<b>Possession</b>	0	0	0	1	5	10	5	48	85	209	135	117	91	706
<b>Totals</b>	0	0	0	3	8	10	16	90	138	420	302	229	179	1395

**2005-2006 Student Tobacco Suspensions and Expulsions**



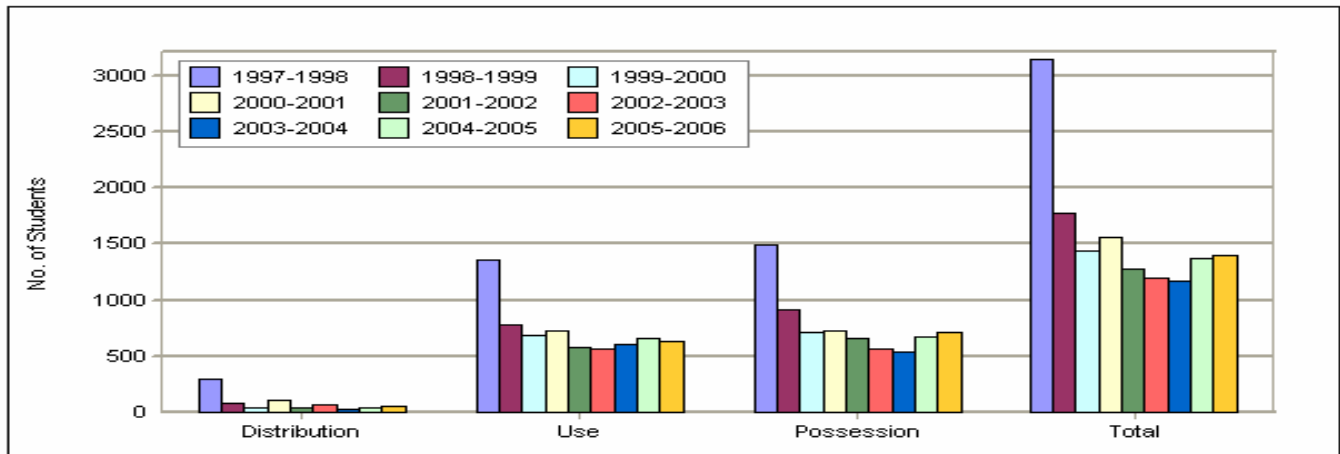
Grade	K	1	2	3	4	5	6	7	8	9	10	11	12	Totals
<b>Suspensions</b>	0	0	0	1	6	6	8	40	88	220	104	86	76	635
<b>Expulsions</b>	0	0	0	0	0	0	0	5	0	1	3	0	0	9
<b>Totals</b>	0	0	0	1	6	6	8	45	88	221	107	86	76	644

**1998-2006 Tobacco Incident Comparisons  
for School Campus and School Activities**



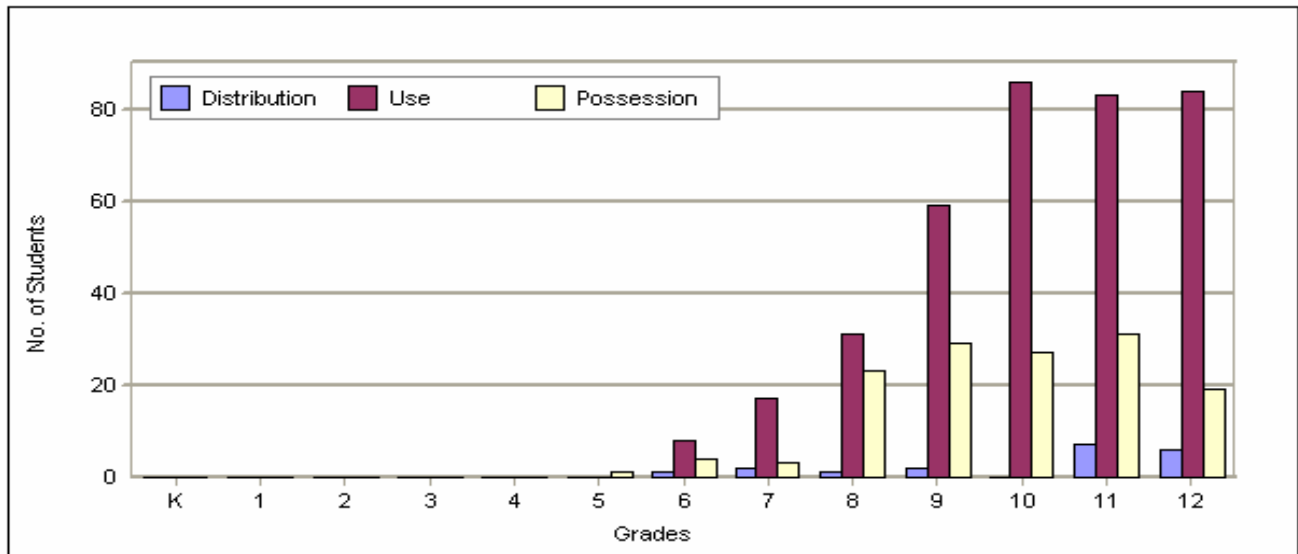
Years	Distribution	Use	Possession	Total
1997-98	301	1363	1487	3151
1998-99	77	776	918	1771
1999-00	40	682	719	1441
2000-01	107	724	723	1554
2001-02	40	576	661	1277
2002-03	65	571	560	1196
2003-04	33	599	536	1168
2004-05	41	661	671	1373
2005-06	57	632	706	1395

**1998-2006 Tobacco Incident Comparisons  
for School Campus and School Activities**



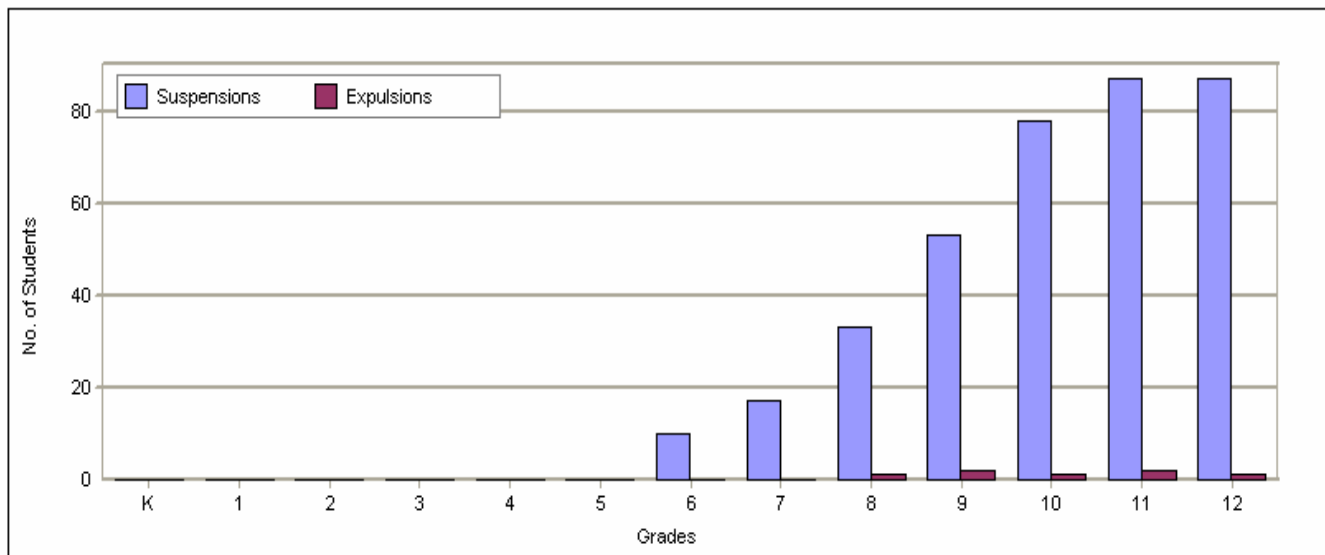
Years	Distribution	Use	Possession	Total
1997-1998	301	1363	1487	3151
1998-1999	77	776	918	1771
1999-2000	40	682	719	1441
2000-2001	107	724	723	1554
2001-2002	40	576	661	1277
2002-2003	65	571	560	1196
2003-2004	33	599	536	1168
2004-2005	41	661	671	1373
2005-2006	57	632	706	1395

**School Campus and School Activities  
2005-2006 Student Alcohol Distribution, Use and Possession**



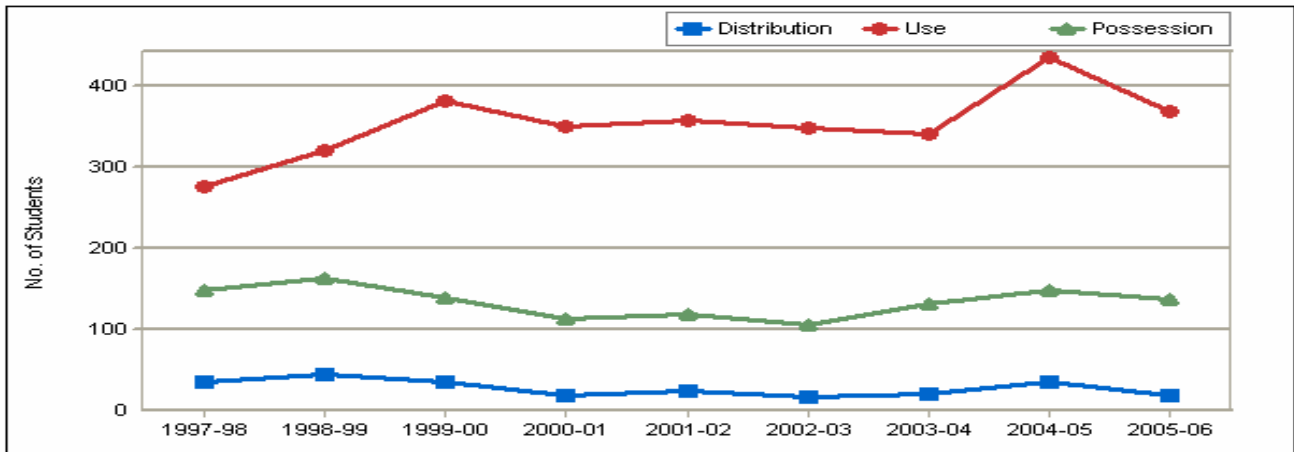
Grade	K	1	2	3	4	5	6	7	8	9	10	11	12	Totals
<b>Distribution</b>	0	0	0	0	0	0	1	2	1	2	0	7	6	19
<b>Use</b>	0	0	0	0	0	0	8	17	31	59	86	83	84	368
<b>Possession</b>	0	0	0	0	0	1	4	3	23	29	27	31	19	137
<b>Totals</b>	0	0	0	0	0	1	13	22	55	90	113	121	109	524

**2005-2006 Student Alcohol Suspensions and Expulsions**



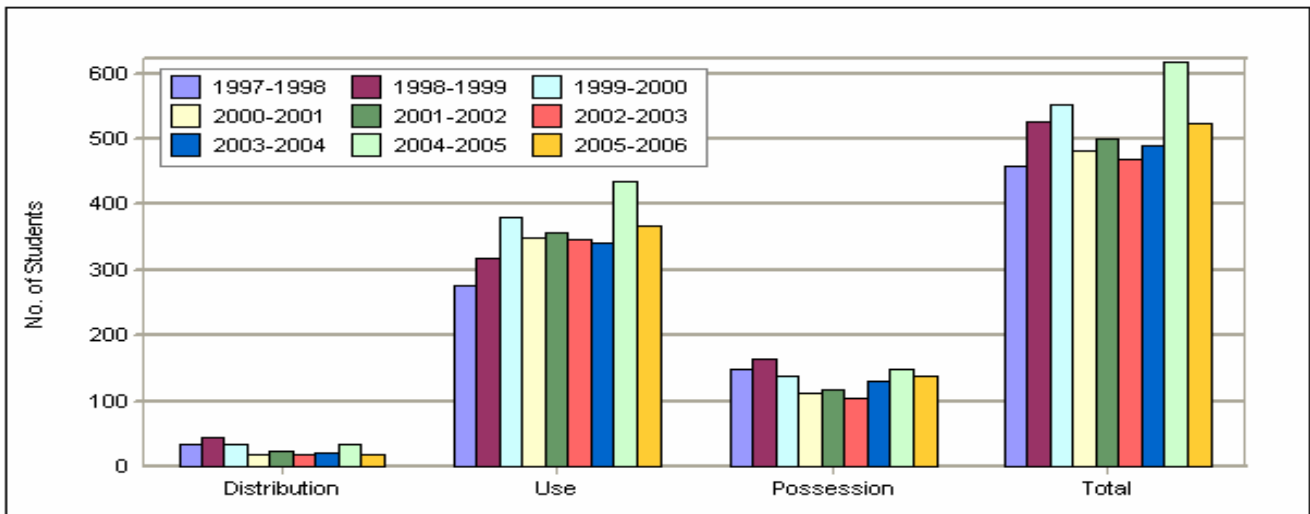
Grade	K	1	2	3	4	5	6	7	8	9	10	11	12	Totals
<b>Suspensions</b>	0	0	0	0	0	0	10	17	33	53	78	87	87	365
<b>Expulsions</b>	0	0	0	0	0	0	0	0	1	2	1	2	1	7
<b>Totals</b>	0	0	0	0	0	0	10	17	34	55	79	89	88	372

**1998-2006 Alcohol Incident Comparisons  
for School Campus and School Activities**



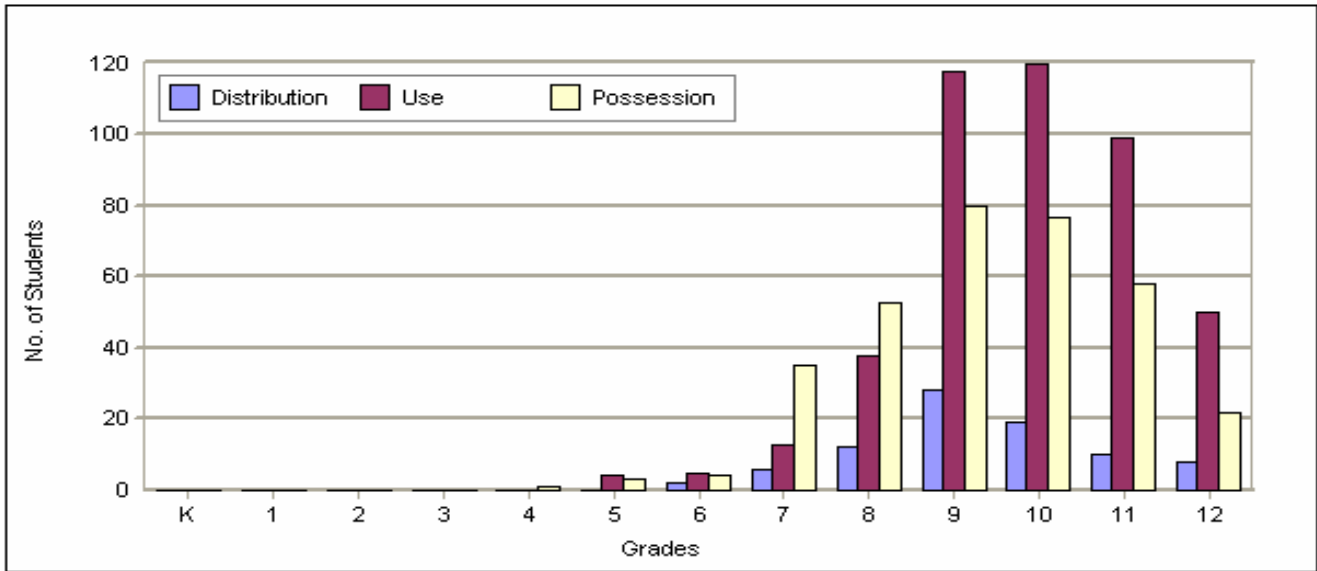
Years	Distribution	Use	Possession	Total
1997-98	35	275	148	458
1998-99	44	319	163	526
1999-00	35	380	138	553
2000-01	19	349	113	481
2001-02	24	357	118	499
2002-03	17	347	105	469
2003-04	20	340	131	491
2004-05	35	434	148	617
2005-06	19	368	137	524

**1998-2006 Alcohol Incident Comparisons  
for School Campus and School Activities**



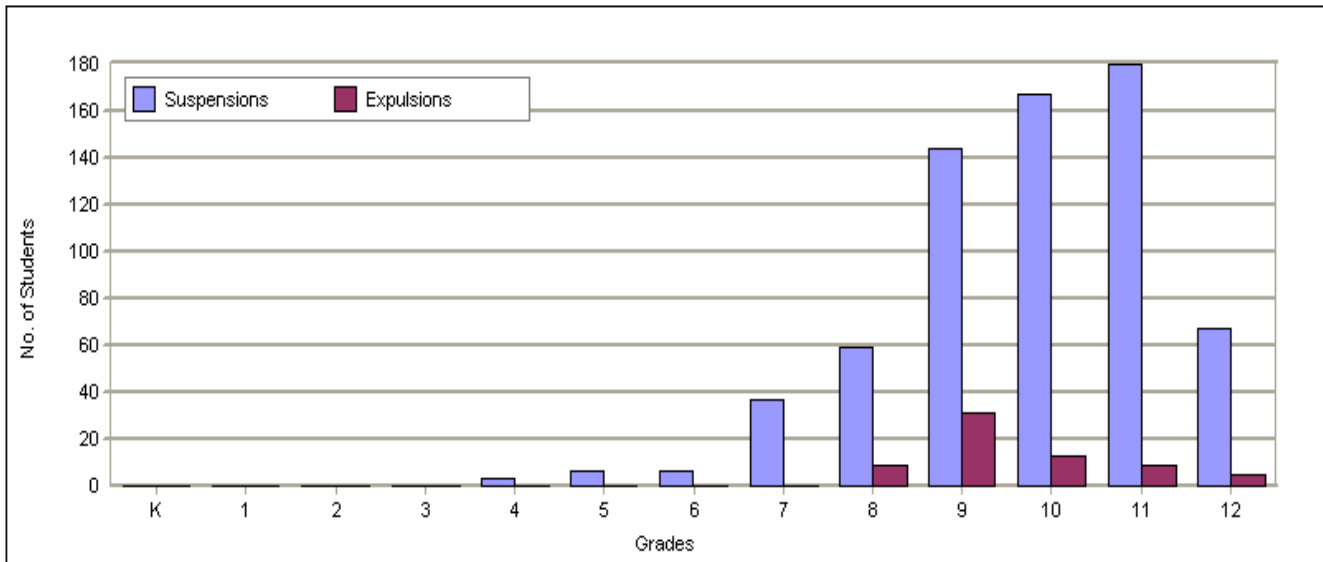
Years	Distribution	Use	Possession	Total
1997-1998	35	275	148	458
1998-1999	44	319	163	526
1999-2000	35	380	138	553
2000-2001	19	349	113	481
2001-2002	24	357	118	499
2002-2003	17	347	105	469
2003-2004	20	340	131	491
2004-2005	35	434	148	617
2005-2006	19	368	137	524

**School Campus and School Activities  
2005-2006 Student Drug Distribution, Use and Possession**



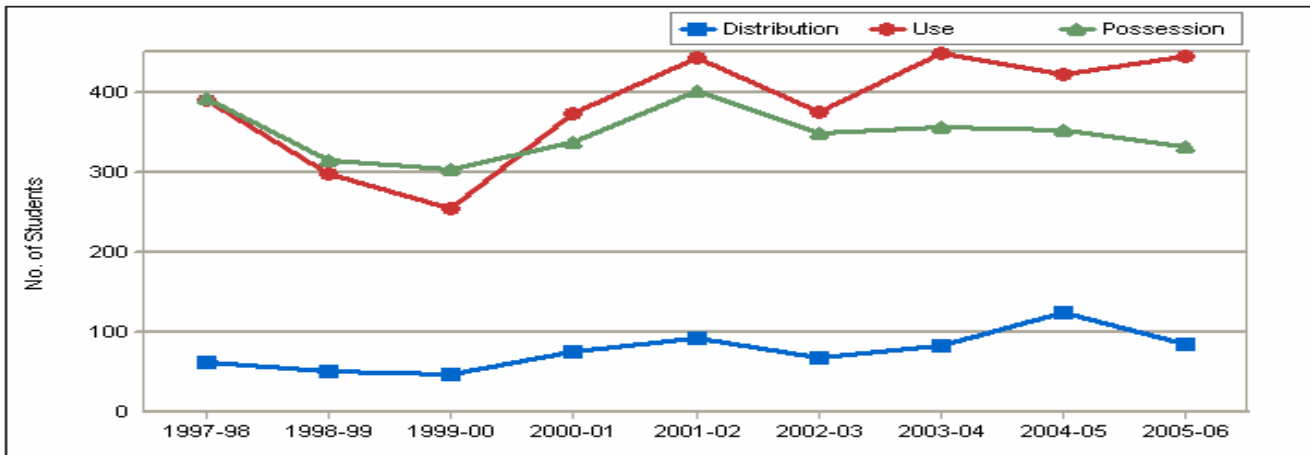
Grade	K	1	2	3	4	5	6	7	8	9	10	11	12	Totals
<b>Distribution</b>	0	0	0	0	0	0	2	6	12	28	19	10	8	85
<b>Use</b>	0	0	0	0	0	4	5	13	38	118	120	99	50	447
<b>Possession</b>	0	0	0	0	1	3	4	35	53	80	77	58	22	333
<b>Totals</b>	0	0	0	0	1	7	11	54	103	226	216	167	80	865

**2005-2006 Student Drugs Suspensions and Expulsions**



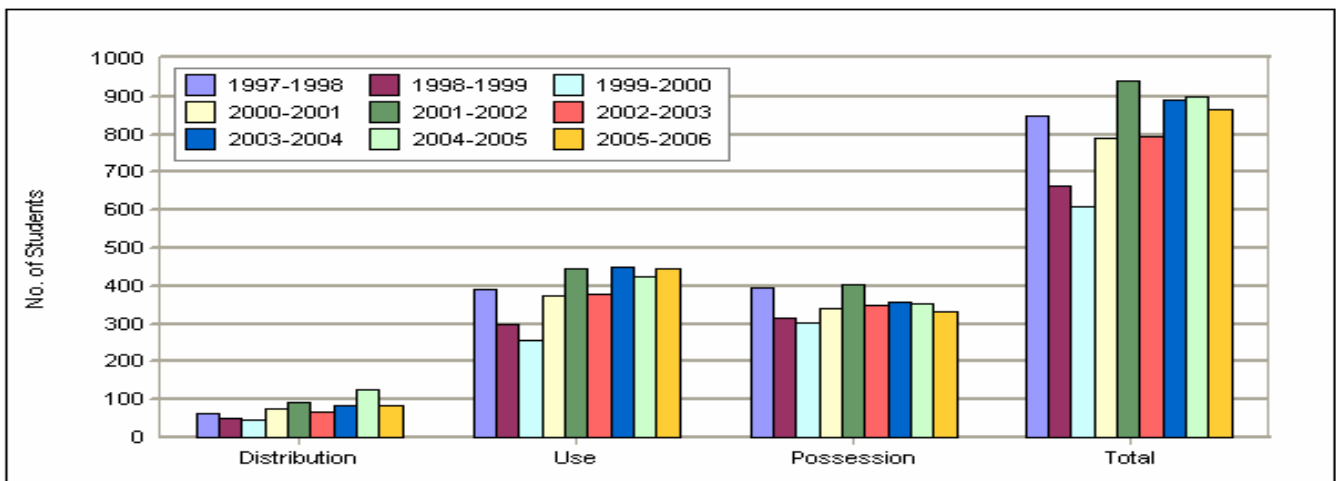
Grade	K	1	2	3	4	5	6	7	8	9	10	11	12	Totals
<b>Suspensions</b>	0	0	0	0	3	6	6	37	59	144	167	180	67	669
<b>Expulsions</b>	0	0	0	0	0	0	0	0	9	31	13	9	5	67
<b>Totals</b>	0	0	0	0	3	6	6	37	68	175	180	189	72	736

**1998-2006 Drug Incident Comparisons  
for School Campus and School Activities**



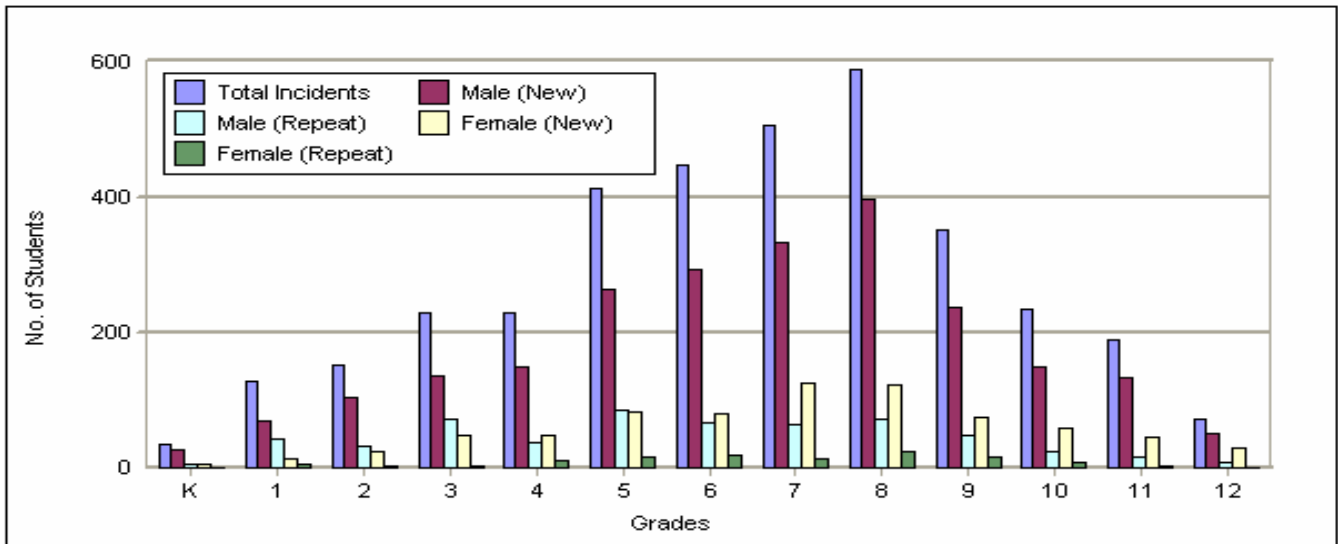
Years	Distribution	Use	Possession	Total
1997-98	63	392	393	848
1998-99	51	298	316	665
1999-00	48	256	304	608
2000-01	75	374	339	788
2001-02	92	445	403	940
2002-03	69	377	349	795
2003-04	83	450	358	891
2004-05	124	423	353	900
2005-06	85	447	333	865

**1998-2006 Drug Incident Comparisons  
for School Campus and School Activities**



Years	Distribution	Use	Possession	Total
1997-1998	63	392	393	848
1998-1999	51	298	316	665
1999-2000	48	256	304	608
2000-2001	75	374	339	788
2001-2002	92	445	403	940
2002-2003	69	377	349	795
2003-2004	83	450	358	891
2004-2005	124	423	353	900
2005-2006	85	447	333	865

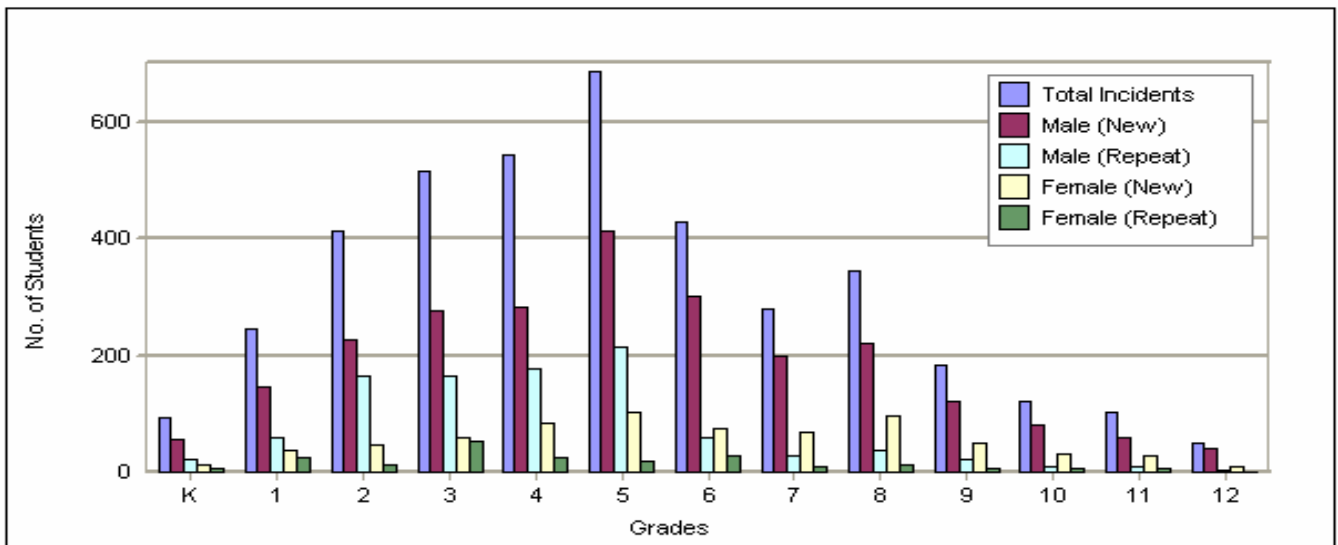
**School Campus and School Activities  
2005-2006 Student Harassments - Individuals/Incidents**



Grade	K	1	2	3	4	5	6	7	8	9	10	11	12	Totals
<b>Total Incidents</b>	34	127	151	230	229	412	447	506	590	352	235	189	71	3573
<b>Male (New)</b>	27	69	103	135	150	263	294	332	397	238	148	132	50	2338
<b>Male (Repeat)</b>	5	42	31	72	37	85	66	64	71	47	24	17	7	568
<b>Female (New)</b>	4	14	24	49	49	82	81	125	122	75	59	45	28	757
<b>Female (Repeat)</b>	1	4	2	2	10	17	18	13	24	17	9	3	1	121

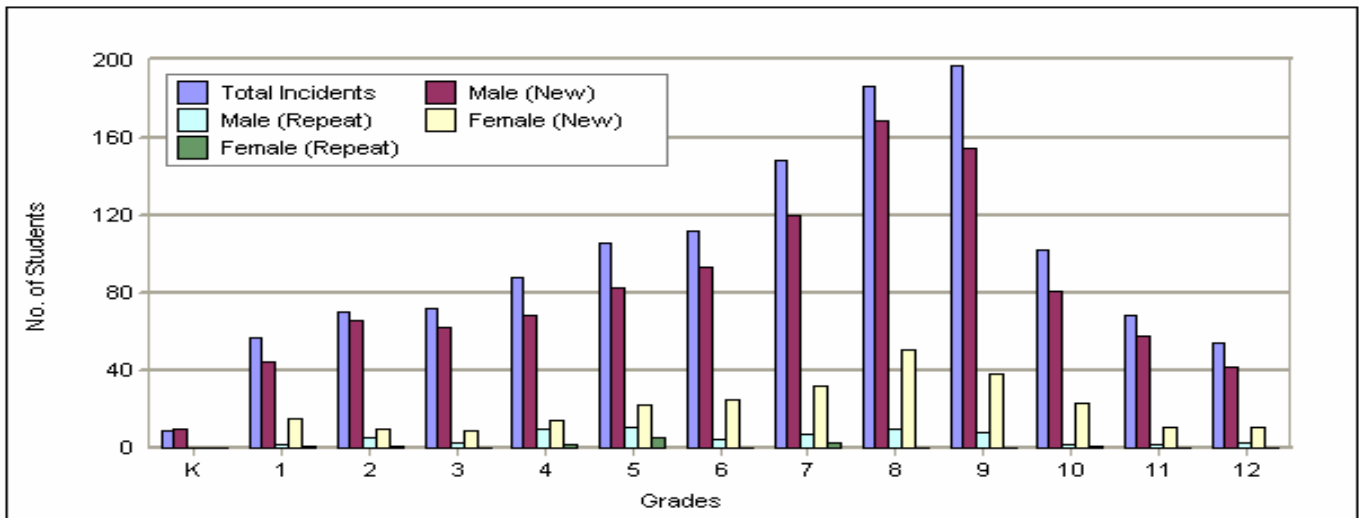
New = First offense by student; Repeat = Second/additional offenses by same student.

**School Campus and School Activities  
2005-2006 Student Bullying - Individuals/Incidents**



Grade	K	1	2	3	4	5	6	7	8	9	10	11	12	Totals
<b>Total Incidents</b>	92	246	413	516	543	689	429	281	345	184	120	103	50	4011
<b>Male (New)</b>	57	146	228	277	283	415	303	200	220	120	81	60	40	2430
<b>Male (Repeat)</b>	23	59	165	166	178	215	59	28	36	23	10	10	4	976
<b>Female (New)</b>	12	37	47	58	85	102	74	68	97	49	30	29	9	697
<b>Female (Repeat)</b>	7	25	13	53	24	20	27	10	12	5	7	5	1	209

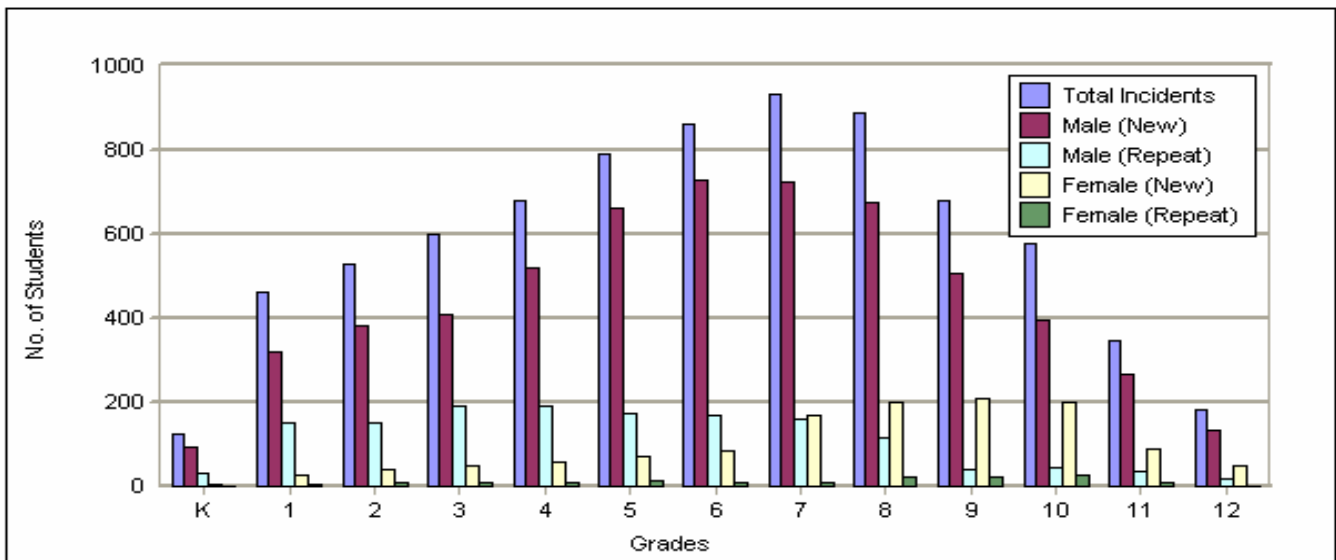
**School Campus and School Activities  
2005-2006 Student Vandalism - Individuals/Incidents**



Grade	K	1	2	3	4	5	6	7	8	9	10	11	12	Totals
<b>Total Incidents</b>	9	57	70	72	88	106	112	148	187	197	102	68	54	1270
<b>Male (New)</b>	10	44	66	62	68	83	93	120	169	155	81	58	42	1051
<b>Male (Repeat)</b>	0	2	5	3	10	11	4	7	10	8	2	2	3	67
<b>Female (New)</b>	0	15	10	9	14	22	25	32	51	38	23	11	11	261
<b>Female (Repeat)</b>	0	1	1	0	2	5	0	3	0	0	1	0	0	13

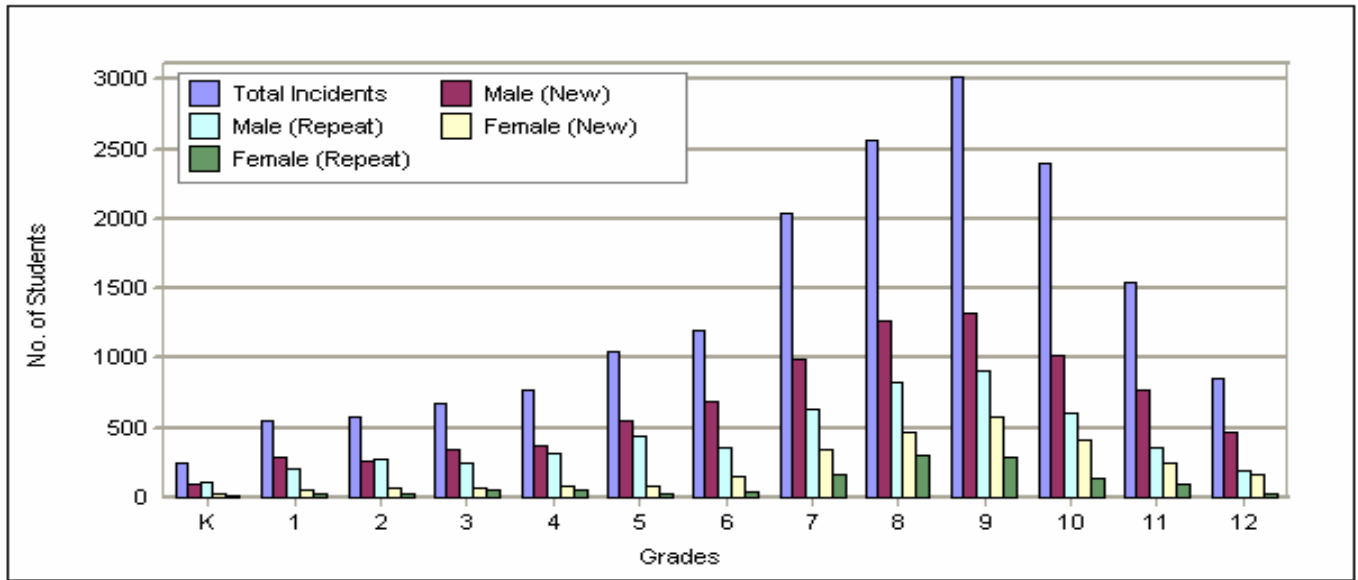
New = First offense by student; Repeat = Second/additional offenses by same student.

**School Campus and School Activities  
2005-2006 Student Fights - Individuals/Incidents**



Grade	K	1	2	3	4	5	6	7	8	9	10	11	12	Totals
<b>Total Incidents</b>	125	460	528	599	681	792	860	933	891	682	578	348	181	7658
<b>Male (New)</b>	93	321	381	409	522	664	727	724	675	505	397	268	135	5821
<b>Male (Repeat)</b>	33	149	149	190	192	173	168	161	116	39	46	36	19	1471
<b>Female (New)</b>	5	26	41	51	57	71	86	171	201	207	199	91	51	1257
<b>Female (Repeat)</b>	0	5	8	7	9	13	8	10	22	24	27	7	0	140

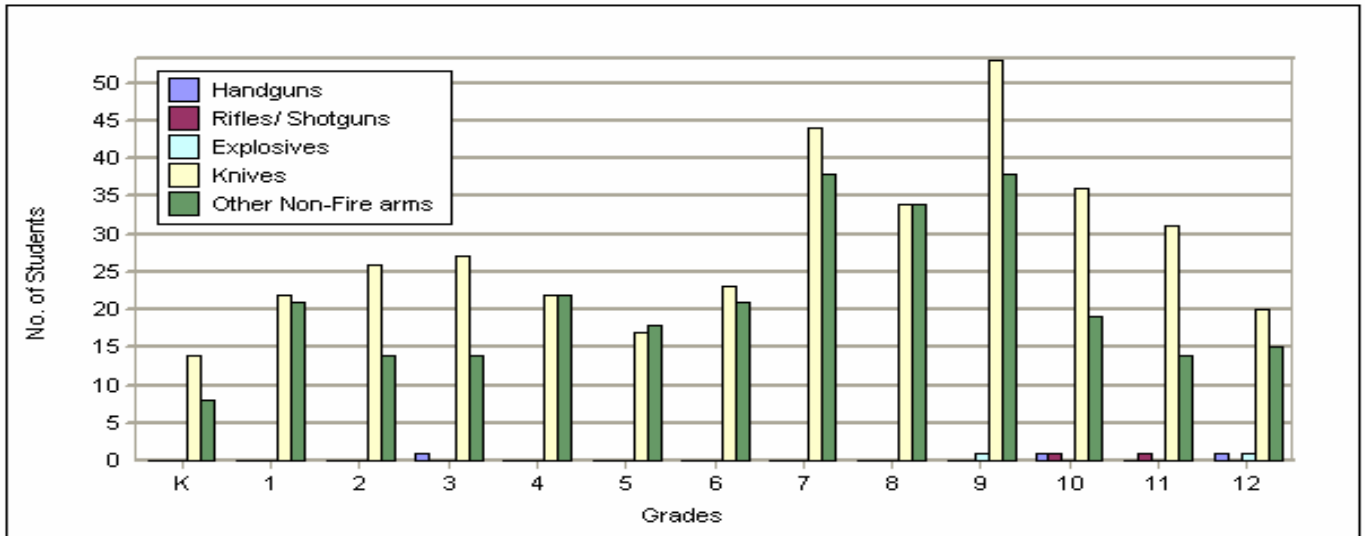
**School Campus and School Activities  
2005-2006 Student Insubordination - Individuals/Incidents**



Grade	K	1	2	3	4	5	6	7	8	9	10	11	12	Totals
<b>Total Incidents</b>	244	550	583	672	773	1048	1194	2041	2567	3020	2403	1537	851	17483
<b>Male (New)</b>	98	287	266	341	377	545	684	995	1269	1319	1016	768	462	8427
<b>Male (Repeat)</b>	109	208	277	248	321	440	363	634	821	904	606	354	191	5476
<b>Female (New)</b>	22	55	68	68	86	86	156	347	468	573	415	248	161	2753
<b>Female (Repeat)</b>	15	33	21	49	57	28	48	171	298	293	133	95	31	1272

New = First offense by student; Repeat = Second/additional offenses by same student.

## 2005-2006 Weapons on School Grounds

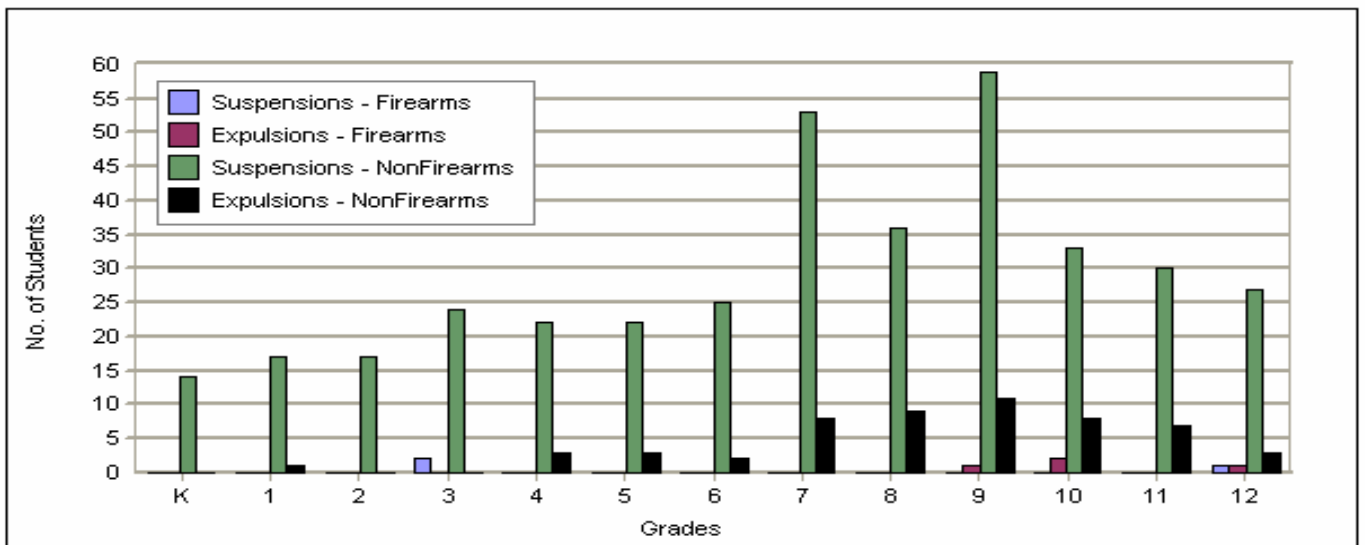


Grade	K	1	2	3	4	5	6	7	8	9	10	11	12	Totals
<b>Handguns</b>	0	0	0	1	0	0	0	0	0	0	1	0	1	3
<b>Rifles/ Shotguns</b>	0	0	0	0	0	0	0	0	0	0	1	1	0	2
<b>Explosives</b>	0	0	0	0	0	0	0	0	0	1	0	0	1	2
<b>Knives</b>	14	22	26	27	22	17	23	44	34	53	36	31	20	369
<b>Other Non-Fire arms</b>	8	21	14	14	22	18	21	38	34	38	19	14	15	276

**Types of Other Weapons :**

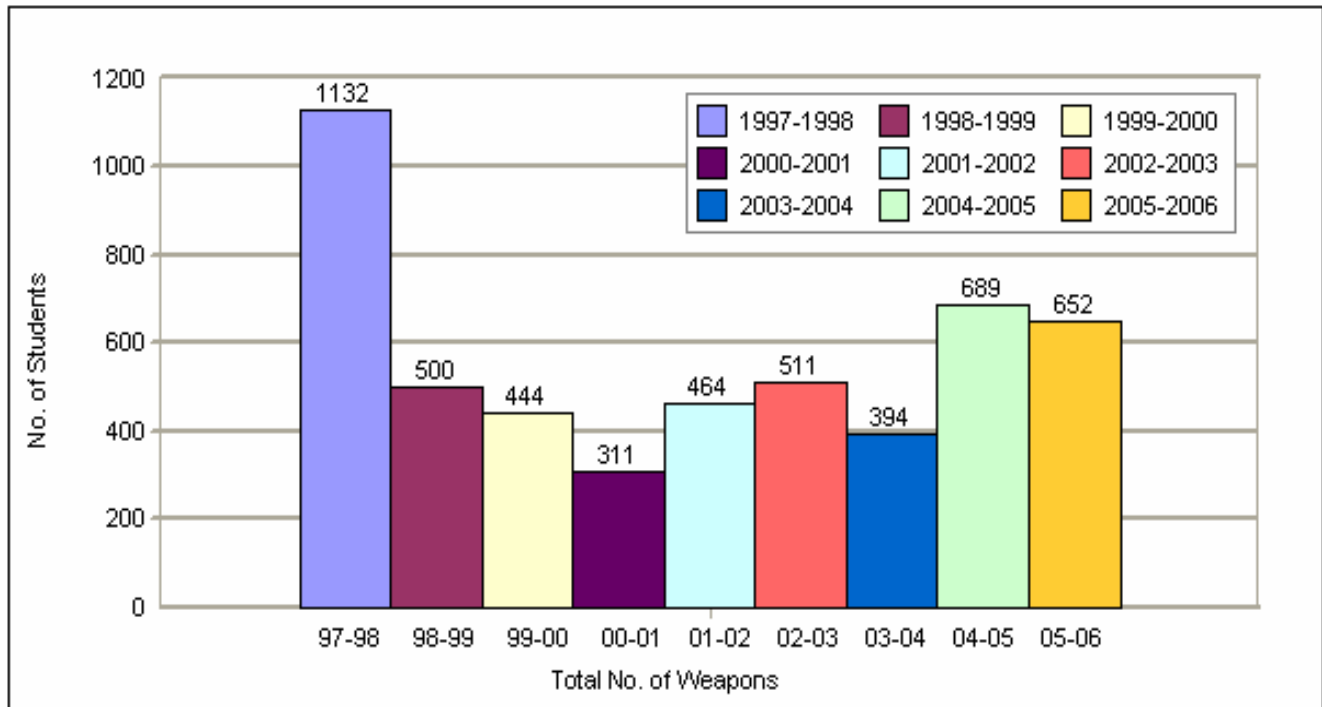
**Toy guns, Paintball gun, pellet guns, BB guns, nail files, mace, brass knuckles, metal mop handle, matches, fire crackers, lighter, smoke and stink bombs, needles/pins, chain, pencils, pens, police baton, screw driver, razor blades, straight paper clip, baseball bat, box cutters, Chinese star, scissors, sling shot**

## 2005-2006 Weapons on School Grounds (Suspensions and Expulsions)

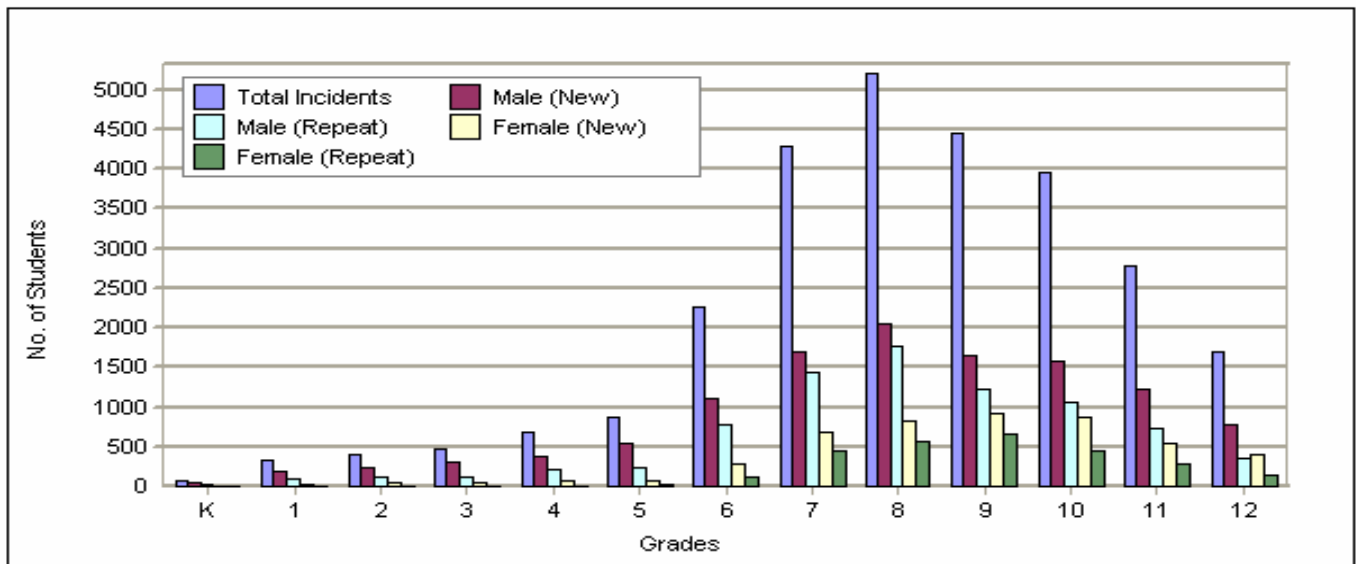


Grade	K	1	2	3	4	5	6	7	8	9	10	11	12	Totals
<b>Suspensions - Firearms</b>	0	0	0	2	0	0	0	0	0	0	0	0	1	3
<b>Expulsions - Firearms</b>	0	0	0	0	0	0	0	0	0	1	2	0	1	4
<b>Suspensions - NonFirearms</b>	14	17	17	24	22	22	25	53	36	59	33	30	27	379
<b>Expulsions - NonFirearms</b>	0	1	0	0	3	3	2	8	9	11	8	7	3	55

### 1998-2006 Total Number of Weapons on School Grounds



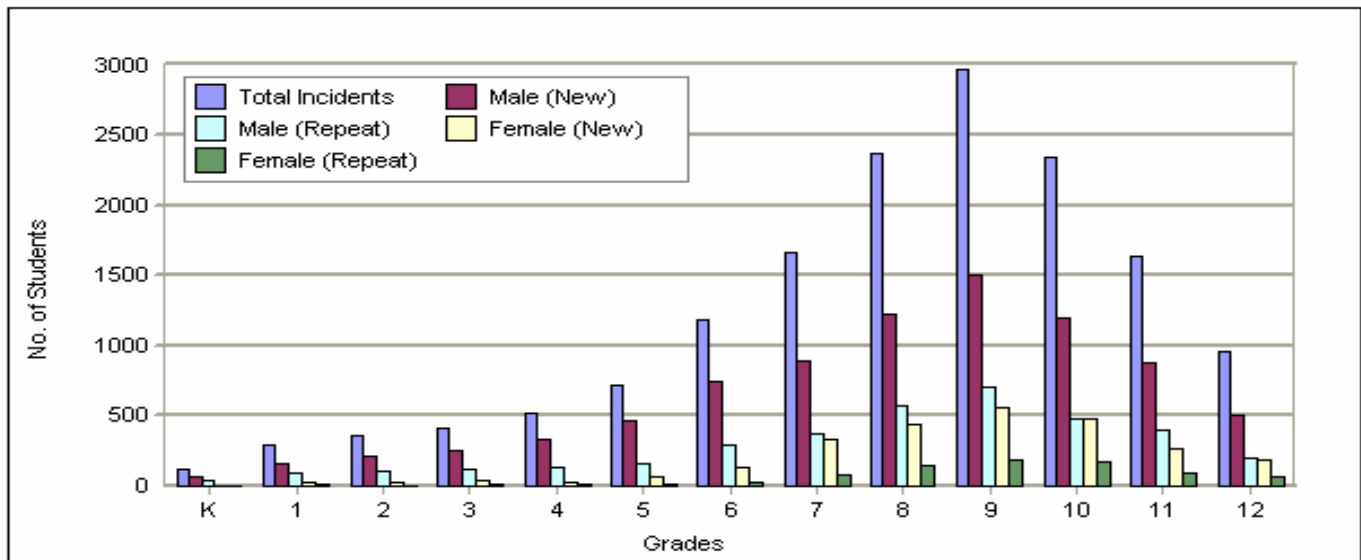
### 2005-2006 In School Student Suspensions



Grade	K	1	2	3	4	5	6	7	8	9	10	11	12	Totals
<b>Total Incidents</b>	66	325	408	473	684	883	2272	4276	5216	4463	3967	2778	1686	27497
<b>Male (New)</b>	38	196	242	298	386	549	1100	1707	2057	1658	1567	1227	784	11809
<b>Male (Repeat)</b>	21	96	119	116	223	240	767	1444	1762	1231	1067	725	364	8175
<b>Female (New)</b>	5	26	40	52	64	74	281	677	823	915	878	541	395	4771
<b>Female (Repeat)</b>	2	7	7	7	11	20	124	448	574	659	455	285	143	2742

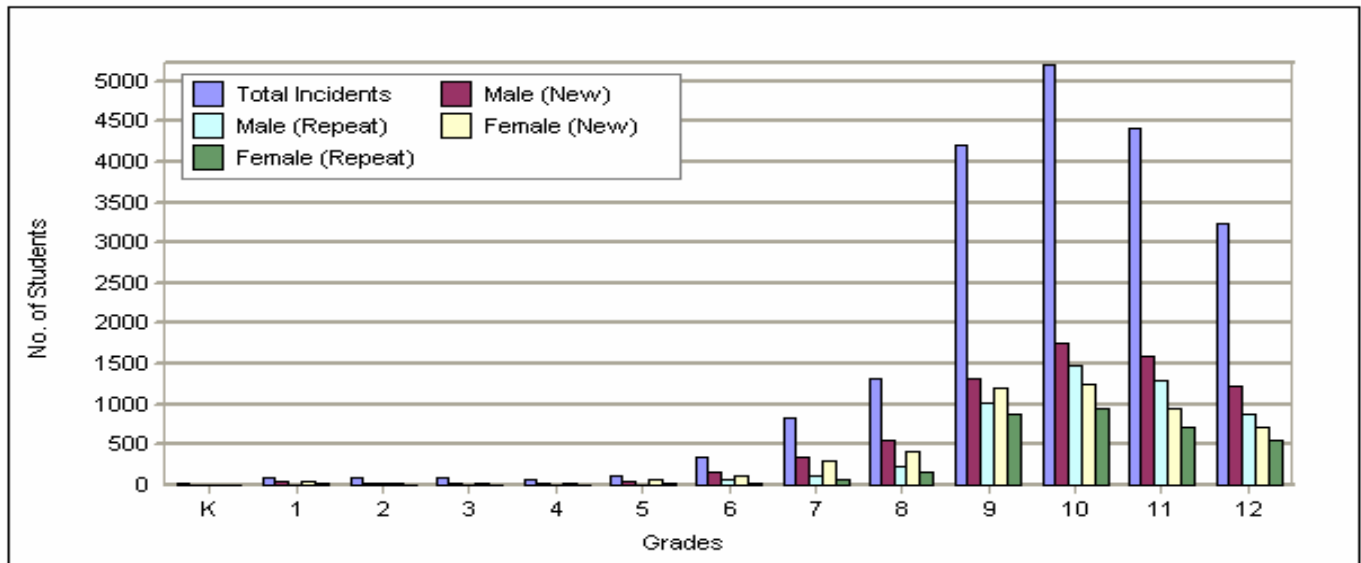
New = First offense by student; Repeat = Second/additional offenses by same student.

### 2005-2006 Out of School Student Suspensions



Grade	K	1	2	3	4	5	6	7	8	9	10	11	12	Totals
<b>Total Incidents</b>	114	287	362	417	514	717	1183	1672	2376	2968	2345	1645	958	15558
<b>Male (New)</b>	65	164	218	248	329	471	743	895	1223	1505	1206	884	508	8459
<b>Male (Repeat)</b>	42	89	109	124	138	166	287	367	573	711	479	397	201	3683
<b>Female (New)</b>	6	22	29	34	31	65	130	328	434	565	484	273	184	2585
<b>Female (Repeat)</b>	1	12	6	11	16	15	23	82	146	187	176	91	65	831

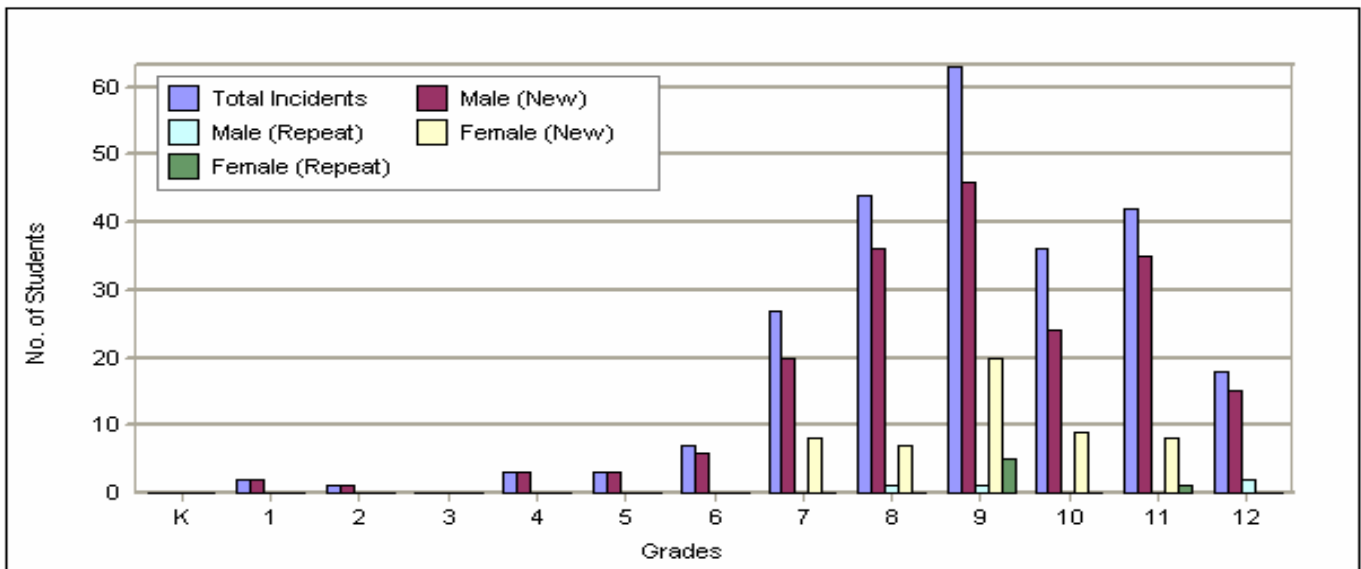
## 2005-2006 Student Truancies - Individuals/Incidents



Grade	K	1	2	3	4	5	6	7	8	9	10	11	12	Totals
<b>Total Incidents</b>	18	102	83	82	63	111	356	830	1310	4200	5196	4420	3234	20005
<b>Male (New)</b>	8	39	26	33	29	47	158	351	555	1309	1748	1605	1231	7139
<b>Male (Repeat)</b>	2	9	27	9	8	7	77	124	223	1006	1468	1299	877	5136
<b>Female (New)</b>	6	39	22	31	18	58	106	310	423	1192	1258	952	707	5122
<b>Female (Repeat)</b>	2	15	9	8	4	12	33	79	171	885	939	720	546	3423

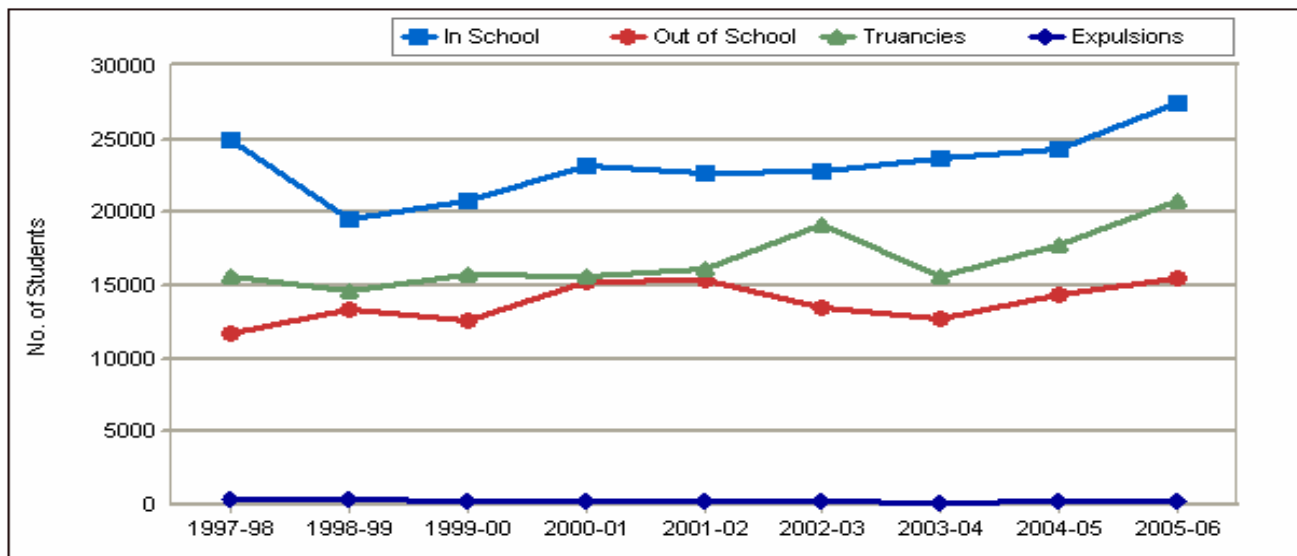
New = First offense by student; Repeat = Second/additional offenses by same student.

## 2005-2006 Student Expulsions - Individuals/Incidents



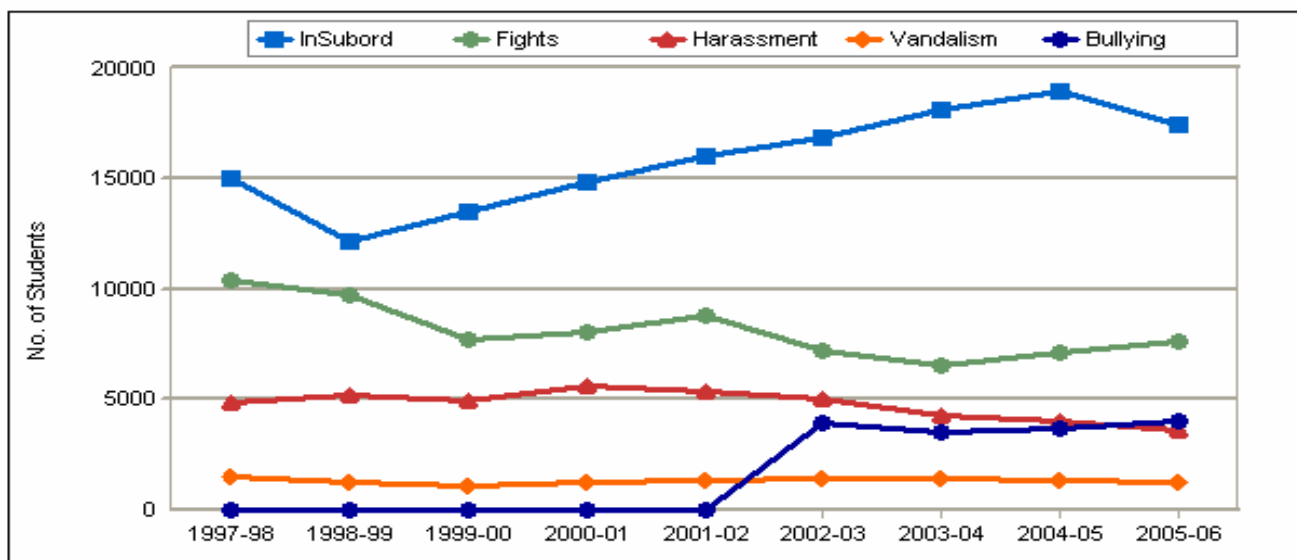
Grade	K	1	2	3	4	5	6	7	8	9	10	11	12	Totals
<b>Total Incidents</b>	0	2	1	0	3	3	7	27	44	63	36	42	18	246
<b>Male (New)</b>	0	2	1	0	3	3	6	20	36	46	24	35	15	191
<b>Male (Repeat)</b>	0	0	0	0	0	0	0	0	1	1	0	0	2	4
<b>Female (New)</b>	0	0	0	0	0	0	0	8	7	20	9	8	0	52
<b>Female (Repeat)</b>	0	0	0	0	0	0	0	0	0	5	0	1	0	6

### 1998-2006 Comparison of Incidents for In and Out of School Suspensions, Truancies and Expulsions



Years	1997-98	1998-99	1999-00	2000-01	2001-02	2002-03	2003-04	2004-05	2005-06
<b>In School</b>	24972	19494	20846	23162	22718	22794	23674	24294	27497
<b>Out of School</b>	11764	13408	12584	15245	15352	13532	12777	14411	15558
<b>Truancies</b>	15670	14590	15729	15684	16074	19206	15656	17713	20820
<b>Expulsions</b>	406	435	269	245	265	232	178	258	253

### 1998-2006 Comparison of Incidents for Insubordination, Fights, Harassments, Vandalism and Bullying



Years	1997-98	1998-99	1999-00	2000-01	2001-02	2002-03	2003-04	2004-05	2005-06
<b>InSubord</b>	15039	12225	13541	14833	16037	16851	18170	19000	17483
<b>Fights</b>	10400	9750	7717	8029	8836	7236	6537	7118	7658
<b>Harassment</b>	4900	5248	4968	5656	5352	5035*	4312*	4037*	3573*
<b>Vandalism</b>	1528	1297	1063	1299	1347	1430	1454	1323	1270
<b>Bullying</b>	N/A	N/A	N/A	N/A	N/A	3980*	3560*	3723*	4011*

\* Since 2002-2003, Harassment has been divided into two categories Harassment and Bullying.

## INCIDENT REPORT GLOSSARY

**Alcohol:** Any product containing at least 0.5 alcohol by volume or weight. Examples include beer, wine and spirits (vodka, gins, whiskey, etc.

**Bullying:** Intentional, repeated hurtful acts, words or other behavior such as name-calling, threatening and/or shunning committed by one or more children against another. Bullying may be physical, verbal, or emotional in nature.

**Distribution:** Includes sale and/or providing alcohol, tobacco or drugs to another while on school campus or at school sponsored activities.

**Explosives:** Any destructive device which includes any explosive, incendiary, or poison gas (bomb, grenade, mine, rocket, propellant charge of more than four ounces), any weapon which may be readily converted to expel a projectile by the action of other propellant, and which has any barrel with a bore of more than one-half inch in diameter.

**Expulsion:** Prohibiting school attendance, without services and not being placed in an alternative setting, for ten or more consecutive school days.

**Fighting:** Pushing, shoving, challenging to fight or fighting.

**Firearms:** Only includes center fire or rim fire cartridge firing weapons. Does not include BB guns or pellet guns.

**Harassment:** Includes conduct, whether verbal, written, graphic, or physical, relating to student's race, national origin, color, disability or sex that is sufficiently severe, pervasive or persistent.

**Incidents:** All incidents per grade are recorded.

**Male or Female:** Number of individuals involved in each incident by gender.

**New:** First offense by student.

**Repeat:** Second/additional offenses by same student

**Insubordination:** Includes verbal abuse, failure to follow verbal instructions and/or requests.

**Knife:** An object with a sharpened edge, or a pocketknife with an blade length of greater than 2 ½ inches.

**Other Drugs:** A substance regulated by the controlled Substances Act. Examples: marijuana, meth, PCP, designer drugs, heroin, etc.

**Other Non-Firearm Weapon:** All objects, devices, instruments, materials or substances used or intended to be used to inflict death or serious bodily injury. Also includes toy guns, BB guns, pellet guns, air pistols, paint guns, etc.

**Possession:** Drugs, alcohol, or tobacco carried by a student while on the school campus or at school sponsored activities.

**Suspensions:**

**In School Suspensions:** The assignment of a student to a restrictive program within the student's regular school day based upon the student's misbehavior.

**Out-of-School Suspensions:** Prohibiting school attendance for fewer than ten consecutive days.

**Tobacco:** A product containing tobacco in any form.

**Truancy:** Unauthorized absence from an assigned class or activity during school hours. For reporting purposes, include any truancy where parents are notified in writing or any other administrative action is taken.

**Use:** Alcohol, tobacco or drug use on school campus or at school sponsored activities.

**Vandalism:** Includes disrespect, destroying, defacing property and/or buildings.

## IDAHO UNSAFE SCHOOL CHOICE OPTION POLICY

### The No Child Left Behind Act of 2001 (ESEA) provides, in part:

"TITLE IX, PART E, SUBPART 2, SEC. 9532. UNSAFE SCHOOL CHOICE OPTION.

(a) UNSAFE SCHOOL CHOICE POLICY.--Each State receiving funds under this Act shall establish and implement a statewide policy requiring that a student attending a persistently dangerous public elementary school or secondary school, as determined by the State in consultation with a representative sample of local educational agencies, or who becomes a victim of a violent criminal offense, as determined by State law, while in or on the grounds of a public elementary school or secondary school that the student attends, be allowed to attend a safe public elementary school or secondary school within the local educational agency, including a public charter school.

(b) CERTIFICATION.--As a condition of receiving funds under this Act, a State shall certify in writing to the Secretary that the State is in compliance with this section." PL 107-110, 115 Stat. 1425, 1984-1985 (2002)

The State Department of Education consulted with LEAs and associations involved with public education in Idaho to determine a definition. Based on that consultation, the State Department of Education developed the following definition of "persistently dangerous public elementary school or secondary school." This definition will be used in Idaho to (a) establish state compliance with the federal requirement set forth in ESEA, and (b) determine if any Idaho schools are "persistently dangerous", thus invoking the statutorily-set requirement that students in the identified school be allowed to attend a safe public elementary or secondary school within the local education agency. Pursuant to this Act, the State Department of Education adopts this operational definition:

Persistently dangerous public elementary school or secondary school:

In the context of the No Child Left Behind Act of 2001 (ESEA), an Idaho public elementary or secondary school is considered to be persistently dangerous if it meets the following criteria:

In each of three consecutive years, there is one instance of:

- Homicide
- Sexual offense
- Kidnapping

or the school exceeds an expulsion or student conviction rate of:

1% of the student body

**or**

3 students, whichever number is greater, for violent criminal offenses or for violations of federal or state gun free schools requirements on school property or at school sponsored events while school is in session.

For the purpose of this definition, a "violent criminal offense" is defined as conduct which could be charged as a felony or misdemeanor involving the threat of or actual physical injury, a sexual offense, homicide, rape, robbery, aggravated assault, aggravated battery, stalking, first degree kidnapping or aggravated arson.

State Board Approved 6/27/03

**2002-2003, 2003-2004, 2004-2005 and 2005-2006 Persistently Dangerous Incidents-** (Tracking for these incidents was implemented during 2002-03; aggravated arson, stalking and kidnapping incidents were added to the definition, June 27, 2003)

	<u>2002-2003</u>	<u>2003-2004</u>	<u>2004-2005</u>	<u>2005-2006</u>
Aggravated Arson	NA	0	1	1
Aggravated Assault	3	1	2	1
Aggravated Battery	5	0	3	10
Federal Gun-Free Act Violations	7	11	9	4
Homicide	0	0	0	0
Kidnapping	NA	0	0	0
Rape (Sexual Offense)	0	0	4	1
Robbery	3	0	1	9
Stalking	NA	0	0	0
Threat of or Actual Physical Injury	59	1	14	46

## PERSISTENTLY DANGEROUS SCHOOLS GLOSSARY

The definitions of most violent offenses, such as homicide and rape, are commonly understood and do not need further clarification. Other terms, such as aggravated assault, aggravated battery, and robbery, are subject to individual state definitions and may be misapplied by those not familiar with their legal definitions. Therefore, for purposes of the Unsafe School Choice Options program, the following definitions taken from Idaho Code shall apply:

**Aggravated Arson.** Burning or damaging by fire or explosion a structure or real or personal property, resulting directly or indirectly, in great bodily harm, permanent disability, permanent disfigurement or death of any person, regardless of intent or lack of intent to cause such harm. Ref.: Idaho Code § 18-805

**Aggravated Assault.** An assault with a deadly weapon or instrument, without the intent to kill, or an assault by any means or force likely to produce great bodily harm. Ref.: Idaho Code § 18-905

**Aggravated Battery.** A battery in which a person:

- (a) causes great bodily harm, permanent disability or permanent disfigurement; or
- (b) uses a deadly weapon or instrument; or
- (c) uses any vitriol, corrosive acid, or a caustic chemical of any nature; or
- (d) uses any poison or other noxious or destructive substance or liquid; or
- (e) upon the person of a pregnant female, causes great bodily harm, permanent disability or permanent disfigurement to an embryo or fetus. Ref.: Idaho Code § 18-907

**Federal Gun-Free Act Violations -** Firearms include handguns, rifles or shotguns. The following are included within the definition: (Note: This definition does not apply to items such as toy guns, cap guns, bb guns, and pellet guns.)

- any weapon (including a starter gun) which will or is designed to or may readily be converted to expel a projectile by the action of an explosive;
- the frame or receiver of any weapon described above;
- any firearm muffler or firearm silencer;
- any destructive device, which includes:
  - (a) any explosive, incendiary, or poison gas
    - (1) bomb,
    - (2) grenade,
    - (3) rocket having a propellant charge of more than four ounces,
    - (4) missile having an explosive or incendiary charge of more than one-quarter ounce,
    - (5) mine, or
    - (6) similar device
  - (b) any weapon which will, or which may be readily converted to, expel a projectile by the action of an explosive or other propellant, and which has any barrel with a bore of more than one-half inch in diameter
  - (c) any combination or parts either designed or intended for use in converting any device into any destructive device described in the two immediately preceding examples, and from which a destructive device may be readily assembled.

**Homicide.** The unlawful killing of a human being.

**Kidnapping-First Degree.** Any kidnapping committed for the purpose of obtaining money, property or another thing of value for the return or disposition of such kidnapped person, or committed for the purpose of raping, or committing the infamous crime against nature or committing serious bodily injury upon the person kidnapped or committing any lewd and lascivious act upon any child under the age of sixteen. Ref.: Idaho Code § 18-4502

**Robbery.** The felonious taking of personal property in the possession of another, from his person or immediate presence, and against his will, accomplished by means of force or fear. Ref.: Idaho Code § 18-6501. *Note: Robbery differs from theft because of the physical presence of the victim and the force or fear component used by the perpetrator taking the property from the victim against his will.*

**Sex Offense.** Rape, crime against nature, forcible sexual penetration by use of foreign object, sexual abuse of a child under the age of sixteen, ritualized abuse of a child, sexual exploitation of a child. Includes lewd conduct with a minor child under sixteen, or sexual battery of a minor child sixteen or seventeen years of age. Ref: Idaho Code § 18-1506

**Stalking.** Willfully, maliciously and repeatedly following or harassing another person. Ref.: Idaho Code § 18-7905

**Threat of or Actual Physical Injury.** To express an intent, through word or action, to inflict harm upon another person, coupled with the apparent ability to do so, and doing some act which creates a well-founded fear in such other person that such violence is imminent. Ref.: Idaho Code § 18-901