

Boise Independent District #001

Ada County
 8169 W Victory Rd, Boise, ID 83709
 Phone: (208) 854-4000 Fax: (208) 854-4008
 Dr. Stanley J. Olson, Superintendent

District Characteristics 2006-07			
Fall Enrollment	25,000	Special Education:	
Average Daily Attendance.....	23,356	Special Education Students.....	2,728
State Ranking Per ADA.....	2	Gifted and Talented Students.....	736
Number of Schools (sites):		Number of LEP Students**.....	1,595
Elementary.....	34	National School Lunch Program:	
Secondary.....	19	Average Daily Participation.....	11,935
Number of Accredited Schools:		Free and Reduced Meals.....	7,933
Approved.....	45	Lunch Price - Elementary.....	\$1.60
Approved with Merit.....	0	Lunch Price - Secondary.....	\$2.50
Approved with Comment.....	2	Pupil Transportation Program:	
Not Approved.....	0	Average Daily Ridership 2005-06	5,985
High School Diplomas Regular.....	1,660	Contracted Operation	
Other Completions*	0	* Certificates of Completion issued by the district	
Graduation Completion Rate...	88%	** Limited English Proficient (LEP)	

Highlights

From our state and nationally recognized GATE (Gifted & Talented Education) program, outstanding music offerings, including orchestra, band and choir, to our innovative Treasure Valley Mathematics & Science Center, and Dehryl A. Dennis Professional-Technical Education Center, BSD has a program to help each and every child succeed. We lead Idaho with the largest number of graduating seniors who qualified as candidates for the 2007 Presidential Scholars Program, the largest number of Idaho students selected as Semi-Finalists and Finalists in the National Merit® Scholarship Program, and we offer Idaho's most comprehensive Advanced Placement Programs and testing. Log on to www.boiseschools.org to learn more.

Progress Towards Meeting Goals

2006-07 Goals

Progress

All students meet high standards of performance in learning.

Schools in the District met or exceeded established proficiency, graduation, and participation goals, or made progress toward these goals.

All students had the opportunity to participate in a broad range of courses and activities and the District measured student participation therein.

The number of high school students, including low income and minority students, enrolling in accelerated/AP/professional technical courses and post secondary institutions increased significantly.

Support the use of collaborative teams at all levels for the purpose of using data to improve programs and instructional practice.

Classroom observations, assessment information, and other data indicate that the collaborative team process is continuously improving the ability of educators to make important and positive changes in their instructional practice and their students' learning, or that revisions to the plan are necessary.

The District will provide adequate resources, commitment and monitoring to accomplish stated goals and strategies and to address developing events and conditions.

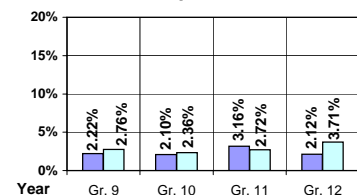
The budget reflected the goals and strategies of the District's Strategic Plan and was aligned with student needs.

Student Profiles

Ethnicity

Race	Male	Female	Total
White	44.04%	40.71%	84.75%
Black	1.30%	1.12%	2.42%
Hispanic	4.35%	4.27%	8.62%
Nat. Amer.	0.27%	0.21%	0.48%
Asian/Pac	1.73%	2.00%	3.73%
Total	51.69%	48.31%	100.00%

Dropouts



Year	Gr. 9	Gr. 10	Gr. 11	Gr. 12
05-06	47	45	62	41
06-07	58	49	57	71

Financial Information 2006-07

	M & O Fund	%	All Funds	%
Revenues:				
Local Taxes	\$63,965,616	33.33%	\$73,519,479	22.50%
Other Sources	9,628,943	5.02%	114,981,572	35.18%
State	118,274,467	61.63%	121,125,057	37.06%
Federal	56,128	0.02%	17,189,743	5.26%
Total	\$191,925,154	100.00%	\$326,815,851	100.00%

Supplemental Information

Property and Agricultural Equipment Replacement Taxes.....	\$3,707
Lottery Revenues.....	\$1,082,304
Technology Grant.....	\$637,136

Expenditures:	Total	%	ADA	Rank
M & O Instruction	\$114,451,374	62.04%		
M & O Support Services	67,551,736	36.62%		
M & O Other	2,468,765	1.34%		
Total M & O	\$184,471,875	100.00%	\$7,898	44
Total All Funds	\$238,844,810	100.00%	\$10,226	49

Tax Levies 9-1-2006	Total	Per ADA	Rank
Property Market Values	\$15,293,168,791	\$654,782	21
Total General M & O Levies	0.004115739		8
Total District Levies	0.004735739		18

Staff Data 2006-07

Personnel:	FTE	ADA To FTE	Teachers Salaries:	Rank
Elementary Teachers	739.51	18	Beginning Salary on Schedule	\$30,000
Secondary Teachers	712.52	16	Highest Salary on Schedule	\$60,744
Administrators	104.36	224	Average Elementary Teacher's Salary	\$52,139 6
Other Certified Staff	189.43	123	Average Secondary Teacher's Salary	\$50,688 7
Total Certified Staff	1,745.82	13	Average Superintendent's Salary	\$162,423 1
Total Non-Certified Staff	850.96	27		

Note: Rank represents how this district compares to the other public school districts in the State of Idaho; high to low (1 being the highest).



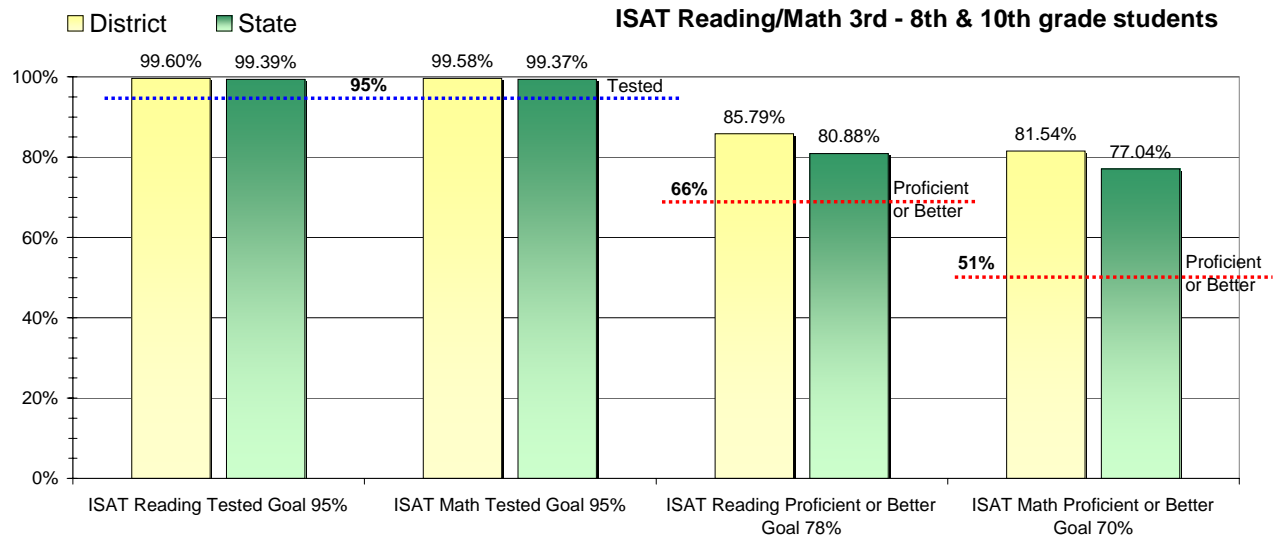
Adequate Yearly Progress and Assessment 2006-07

Did Boise Independent District make Adequate yearly progress for 2006-07? No

Percent of the 41 targets that Boise Independent District made: 73.17%

The goal in our nation is for all students in grades 3 through 8 and 10 to be proficient in reading and math by the spring of 2014. Idaho uses the Idaho Standards Achievement Test (ISAT) and the Idaho Alternate Assessment (IAA) to measure proficiency. This report shows the percentage of students who met state goals for proficiency in reading and math.

More Information is available at: <http://www.sde.state.id.us/AYP/Ayp07/default.asp>



To Protect the privacy of individual students the following symbols are used.

^No participation determinations are made for groups of less than 10 students. The participation rate of students in this group is included in district and state totals.

~ No proficiency determinations are made for groups of less than 34 students. The proficiency level of students in this group is included in district and state totals

3rd Indicator - Graduation Rate		
2005	2006	Goal
85.76%	89.07%	Met