

Kuna Jt District #003

Ada County
 1450 Boise St, Kuna, ID 83634
 Phone: (208) 922-1000 Fax: (208) 922-5646
 Jay Hummel, Superintendent

District Characteristics 2006-07			
Fall Enrollment	4,310	Special Education:	
Average Daily Attendance.....	4,051	Special Education Students.....	472
State Ranking Per ADA.....	16	Gifted and Talented Students.....	85
Number of Schools (sites):		Number of LEP Students**.....	111
Elementary.....	5	National School Lunch Program:	
Secondary.....	2	Average Daily Participation.....	2,529
Number of Accredited Schools:		Free and Reduced Meals.....	1,238
Approved.....	7	Lunch Price - Elementary.....	\$1.50
Approved with Merit.....	0	Lunch Price - Secondary.....	\$1.75
Approved with Comment.....	0	Pupil Transportation Program:	
Not Approved.....	0	Average Daily Ridership 2005-06	1,861
High School Diplomas Regular.....	206	District Owned Operation	
Other Completions*	0		
Graduation Completion Rate...	81%	* Certificates of Completion issued by the district	
		** Limited English Proficient (LEP)	

Highlights

The 2006-2007 school year was extremely eventful. As we continue to experience growth in our district, we have had to make some organizational changes this year. We successfully reconfigured our entire school district, implemented attendance boundaries and opened a new elementary school, all while planning the opening of another elementary school in the upcoming school year.

Because of all of the changes, we took the opportunity to work with our administrative team and School Board to revise our mission, vision, student learning goals and organizational goals. Additionally, we took the first step to include more opportunities for shared decision-making which included establishing school leadership teams and parent advisory teams.

Progress Towards Meeting Goals

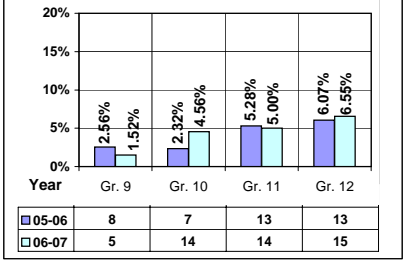
2006-07 Goals	Progress
Establish School Leadership Teams at each school and provide initial training.	Successfully completed
Establish Parent Advisory Teams at each school.	Successfully completed
Implement Response to Intervention Model successfully at Hubbard Elementary and Kuna Middle School	Successfully completed with goal of implementing the model in our other schools.
Provide more support for elementary schools and revise the administrative structure at all schools.	In progress
Revise K-6 reading curriculum.	In progress
Create K-12 narrative writing rubrics.	In progress
Revise K-12 science curriculum.	In progress
Revise the district's mission, vision and goals and begin a district school improvement plan.	In progress
Create and implement a data tool.	In progress
Restructure the District Curriculum Council (DCC) to include subject-area specialists working to implement a continuous improvement approach to curriculum revision.	Successfully completed
Effectively implement the new K-6 math texts and resources.	Successfully completed
Revise student records management guidelines.	In progress
Research and plan implementation of a dual language strand in our ELL magnet school.	In progress

Student Profiles

Ethnicity

Race	Male	Female	Total
White	47.55%	44.20%	91.75%
Black	0.32%	0.32%	0.64%
Hispanic	3.06%	2.95%	6.01%
Nat. Amer.	0.26%	0.30%	0.56%
Asian/Pac	0.46%	0.58%	1.04%
Total	51.65%	48.35%	100.00%

Dropouts



Financial Information 2006-07

	M & O Fund	%	All Funds	%
Revenues:				
Local Taxes	\$841,694	4.09%	\$4,153,338	15.26%
Other Sources	348,021	1.69%	1,234,647	4.54%
State	18,946,564	92.01%	19,389,389	71.24%
Federal	455,017	2.21%	2,440,389	8.96%
Total	\$20,591,296	100.00%	\$27,217,763	100.00%

Supplemental Information

Property and Agricultural Equipment Replacement Taxes.....	\$24,177
Lottery Revenues.....	\$174,991
Technology Grant.....	\$122,191

Expenditures:	Total	%	ADA	Rank
M & O Instruction	\$12,849,649	64.03%		
M & O Support Services	7,180,592	35.78%		
M & O Other	37,142	0.19%		
Total M & O	\$20,067,383	100.00%	\$4,954	128
Total All Funds	\$33,515,714	100.00%	\$8,274	86

Tax Levies 9-1-2006

	Total	Per ADA	Rank
Property Market Values	\$989,026,231	\$244,152	73
Total General M & O Levies	0.000675957		60
Total District Levies	0.003859559		37

Staff Data 2006-07

Personnel:	FTE	ADA To FTE	Teachers Salaries:	Rank
Elementary Teachers	121.83	22	Beginning Salary on Schedule	\$30,000
Secondary Teachers	93.76	18	Highest Salary on Schedule	\$52,930
Administrators	15.11	268	Average Elementary Teacher's Salary	\$38,357 110
Other Certified Staff	12.40	327	Average Secondary Teacher's Salary	\$42,859 63
Total Certified Staff	243.10	17	Average Superintendent's Salary	\$104,545 13
Total Non-Certified Staff	143.63	28		

Note: Rank represents how this district compares to the other public school districts in the State of Idaho; high to low (1 being the highest).



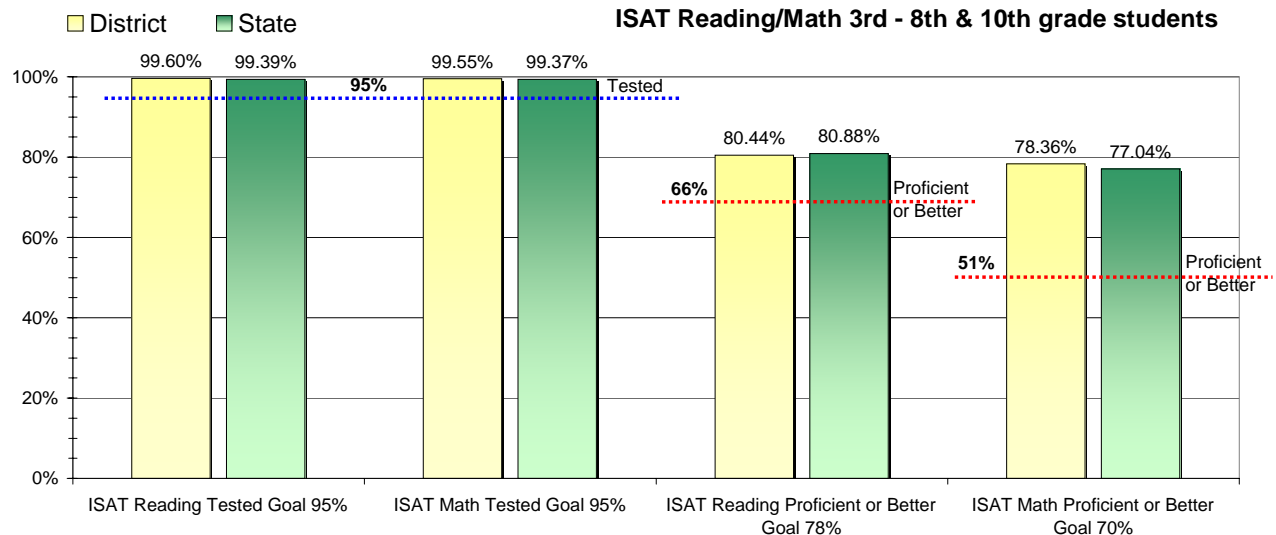
Adequate Yearly Progress and Assessment 2006-07

Did Kuna Jt District make Adequate yearly progress for 2006-07? No

Percent of the 41 targets that Kuna Jt District made: 82.93%

The goal in our nation is for all students in grades 3 through 8 and 10 to be proficient in reading and math by the spring of 2014. Idaho uses the Idaho Standards Achievement Test (ISAT) and the Idaho Alternate Assessment (IAA) to measure proficiency. This report shows the percentage of students who met state goals for proficiency in reading and math.

More Information is available at: <http://www.sde.state.id.us/AYP/Ayp07/default.asp>



To Protect the privacy of individual students the following symbols are used.

^No participation determinations are made for groups of less than 10 students. The participation rate of students in this group is included in district and state totals.

- No proficiency determinations are made for groups of less than 34 students. The proficiency level of students in this group is included in district and state totals

3rd Indicator - Graduation Rate

2005	2006	Goal
83.94%	89.04%	Met