

# Council District #013

Adams County  
 101 E Bleeker Ave, PO Box 68, Council, ID 83612  
 Phone: (208) 253-4217 Fax: (208) 253-4297  
 Murray E. Dalgleish, Superintendent

District Characteristics 2006-07			
Fall Enrollment .....	283	Special Education:	
Average Daily Attendance.....	263	Special Education Students.....	34
State Ranking Per ADA.....	100	Gifted and Talented Students.....	6
Number of Schools (sites):		Number of LEP Students**.....	0
Elementary.....	1	National School Lunch Program:	
Secondary.....	1	Average Daily Participation.....	185
Number of Accredited Schools:		Free and Reduced Meals.....	111
Approved.....	2	Lunch Price - Elementary.....	\$1.65
Approved with Merit.....	0	Lunch Price - Secondary.....	\$1.75
Approved with Comment.....	0	Pupil Transportation Program:	
Not Approved.....	0	Average Daily Ridership 2005-06	70
High School Diplomas Regular.....	24	District Owned Operation	
Other Completions* .....	0	* Certificates of Completion issued by the district	
Graduation Completion Rate...	92%	** Limited English Proficient (LEP)	

### Highlights

Our district has moved forward in the areas of increasing student engagement and incorporating character education in every classroom. One of the best examples of engaging students comes from our development of a night class designed for our at-risk students who might drop out. This class is taught by adult volunteers in the community who teach trades such as woodworking, welding, wiring, auto repair, etc. These adults incorporate academics into the projects that students are working on, emphasizing math, reading and writing- areas where most of these students have not been successful. We believe this will prevent these students from dropping out. We recognized a need to motivate our most at-risk students and addressed it.

We continue with our after school academic programs, our summer school program, our credit recovery classes at night, and our ISAT remediation courses to help struggling students.

### Progress Towards Meeting Goals

2006-07 Goals	Progress
---------------	----------

Our district has two main goals for the year: Student Engagement and Character Education. We strongly believe that students are more successful in the classroom when the teacher fully engages them. We have used voluntary peer (staff) mentoring and projects to develop relevance and ownership.

Our staff has started to incorporate more project-based lessons into the secondary. We have also started a night class for our at-risk students using adult mentors from the community to teach trades such as auto mechanics, woodworking and welding. There is an academic component to these classes tied to each of the trade areas to encourage students to stay in school and learn their skills in math, reading, and writing because it is an essential part of these trades. We have high hopes that this will keep these students in school. We have tried a variety of other methods in the classroom to motivate and engage students such as trading ideas through staff mentoring and cooperation through sharing ideas.

Character education is something that schools do every day, however we wanted to incorporate this into our curriculum to teach the concepts of respect for self, others and the school as well as integrity and honesty.

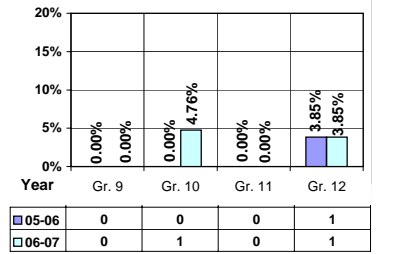
Character education is being done in every classroom because we feel the concepts of respect, integrity and honesty need to be taught and expectations set in each class daily. We feel that we have made progress on these two goal areas. We feel that we are reaching more students in the classroom through the focus on engagement and the school atmosphere has improved since we have focused on character education in each classroom.

### Student Profiles

#### Ethnicity

Race	Male	Female	Total
White	47.71%	46.64%	94.35%
Black	0.00%	0.00%	0.00%
Hispanic	0.35%	2.47%	2.82%
Nat. Amer.	0.71%	0.71%	1.42%
Asian/Pac	0.71%	0.70%	1.41%
Total	49.48%	50.52%	100.00%

### Dropouts



### Financial Information 2006-07

	M & O Fund	%	All Funds	%
<b>Revenues:</b>				
Local Taxes	\$24,602	1.17%	\$98,752	3.63%
Other Sources	67,897	3.24%	118,292	4.34%
State	2,004,672	95.59%	2,109,069	77.46%
Federal	0	0.00%	396,529	14.57%
<b>Total</b>	<b>\$2,097,171</b>	<b>100.00%</b>	<b>\$2,722,642</b>	<b>100.00%</b>

#### Supplemental Information

Property and Agricultural Equipment Replacement Taxes.....	\$6,753
Lottery Revenues.....	\$12,958
Technology Grant.....	\$29,675

Expenditures:	Total	%	ADA	Rank
M & O Instruction	\$1,475,141	66.91%		
M & O Support Services	689,126	31.26%		
M & O Other	40,400	1.83%		
<b>Total M &amp; O</b>	<b>\$2,204,667</b>	<b>100.00%</b>	<b>\$8,390</b>	<b>38</b>
<b>Total All Funds</b>	<b>\$2,778,447</b>	<b>100.00%</b>	<b>\$10,574</b>	<b>48</b>

#### Tax Levies 9-1-2006

	Total	Per ADA	Rank
Property Market Values	\$147,769,115	\$562,373	27
Total General M & O Levies	0.000054199		96
Total District Levies	0.000565977		107

### Staff Data 2006-07

Personnel:	FTE	ADA To FTE	Teachers Salaries:	Rank
Elementary Teachers	10.53	12	Beginning Salary on Schedule	\$30,000
Secondary Teachers	13.97	11	Highest Salary on Schedule	\$51,035
Administrators	2.14	123	Average Elementary Teacher's Salary	\$42,822 46
Other Certified Staff	1.16	227	Average Secondary Teacher's Salary	\$44,444 41
Total Certified Staff	27.80	9	Average Superintendent's Salary	\$74,030 92
Total Non-Certified Staff	10.72	25		

Note: Rank represents how this district compares to the other public school districts in the State of Idaho; high to low (1 being the highest).



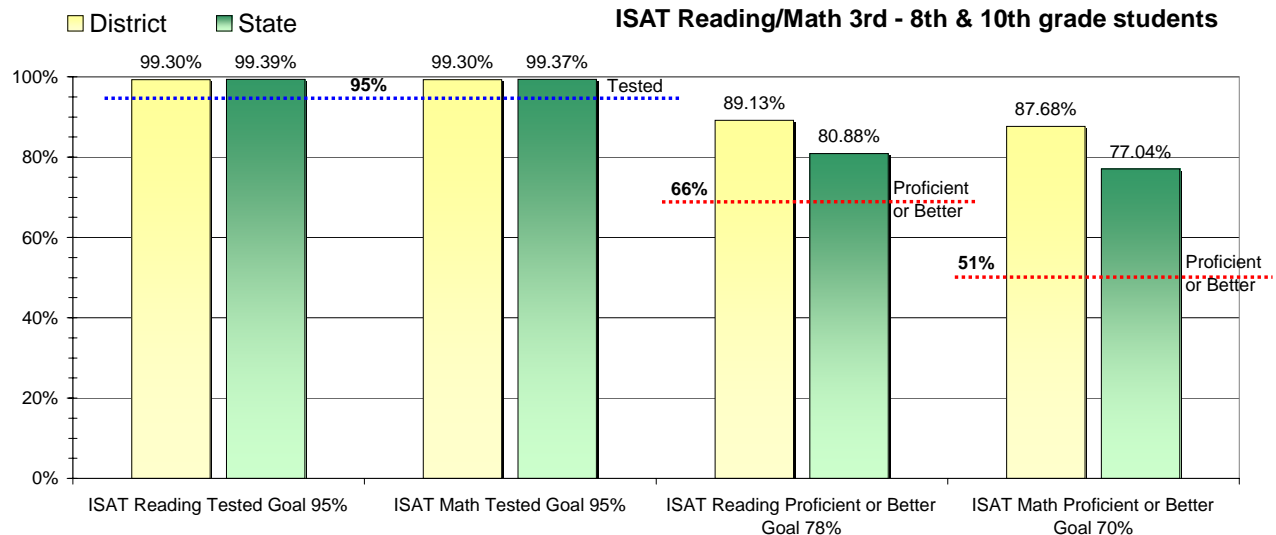
### Adequate Yearly Progress and Assessment 2006-07

Did Council District make Adequate yearly progress for 2006-07? Yes

Percent of the 41 targets that Council District made: 100%

The goal in our nation is for all students in grades 3 through 8 and 10 to be proficient in reading and math by the spring of 2014. Idaho uses the Idaho Standards Achievement Test (ISAT) and the Idaho Alternate Assessment (IAA) to measure proficiency. This report shows the percentage of students who met state goals for proficiency in reading and math.

More Information is available at: <http://www.sde.state.id.us/AYP/Ayp07/default.asp>



To Protect the privacy of individual students the following symbols are used.

^No participation determinations are made for groups of less than 10 students. The participation rate of students in this group is included in district and state totals.

~ No proficiency determinations are made for groups of less than 34 students. The proficiency level of students in this group is included in district and state totals

#### 3rd Indicator - Graduation Rate

2005	2006	Goal
87.88%	87.9%	Met