

St Maries Jt District #041

Benewah County
 720 Main Ave, St Maries, ID 83861
 Phone: (208) 245-2579 Fax: (208) 245-3970
 Dave Cox, Superintendent

District Characteristics 2006-07

Fall Enrollment	1,131	Special Education:	
Average Daily Attendance.....	1,063	Special Education Students.....	143
State Ranking Per ADA.....	51	Gifted and Talented Students.....	0
Number of Schools (sites):		Number of LEP Students**.....	0
Elementary.....	2	National School Lunch Program:	
Secondary.....	3	Average Daily Participation.....	646
Number of Accredited Schools:		Free and Reduced Meals.....	516
Approved.....	4	Lunch Price - Elementary.....	\$1.75
Approved with Merit.....	0	Lunch Price - Secondary.....	\$2.25
Approved with Comment.....	0	Pupil Transportation Program:	
Not Approved.....	0	Average Daily Ridership 2005-06	503
High School Diplomas Regular.....	68	District Owned Operation	
Other Completions*	0	* Certificates of Completion issued by the district	
Graduation Completion Rate...	79%	** Limited English Proficient (LEP)	

Highlights

St. Maries Joint School District #41 remains dedicated to providing all students with opportunities to acquire skills and knowledge that will enable them to reach their maximum potential.

Improvement, continuous evaluation, and accountability are emphasized in educational programs, instruction, and student learning and are targeted through professional development and collaborative activities.

The District continues to focus its efforts to attract and retain a highly qualified staff.

Accomplishments and improvements are marked by strong community support and the combined efforts of trustees, staff, parents, patrons, and students who are "Committed to Quality Education."

Progress Towards Meeting Goals

2006-07 Goals

Progress

Student achievement will be improved in all areas.

Professional Development activities target improving instruction and learning, as well as District Strategic Goals. Staff has demonstrated strong efforts to collaborate about student achievement, effective teaching strategies, and improved student learning.

Promote staff development and growth to support student achievement.

An active Professional Development Committee is funded and supported, and is responsible to assess professional growth needs and to identify activities to address those needs.

Emphasize communication and involvement with staff and the community.

Promoting strong community relationships and partnerships are a priority. Communication is supported through local media, by KJAX student television broadcasts, and District, school and teacher web sites. A strong community Volunteer Program and new health/medical arts program has brought the community into the schools and taken the schools into the community.

Maximize and efficiently use funding sources.

Continuing to carefully use financial resources, the District has also successfully acquired non-traditional grants/funds to support learning.

Provide a safe, healthy, and appropriate learning environment.

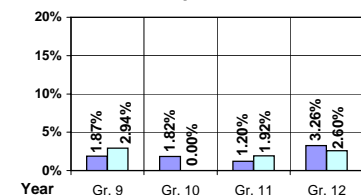
District emergency preparedness operations are updated and reviewed annually. Healthy nutrition is emphasized, with non-nutritious vending items removed from schools to promote healthy nutrition.

Student Profiles

Ethnicity

Race	Male	Female	Total
White	50.84%	42.09%	92.93%
Black	0.44%	0.44%	0.88%
Hispanic	0.97%	1.06%	2.03%
Nat. Amer.	1.95%	1.33%	3.28%
Asian/Pac	0.35%	0.53%	0.88%
Total	54.55%	45.45%	100.00%

Dropouts



Year	Gr. 9	Gr. 10	Gr. 11	Gr. 12
05-06	2	2	1	3
06-07	3	0	2	2

Financial Information 2006-07

	M & O Fund	%	All Funds	%
Revenues:				
Local Taxes	\$882,623	11.92%	\$890,151	10.35%
Other Sources	274,859	3.71%	367,985	4.28%
State	6,244,423	84.36%	6,440,903	74.91%
Federal	0	0.01%	898,889	10.46%
Total	\$7,401,905	100.00%	\$8,597,928	100.00%

Supplemental Information

Property and Agricultural Equipment Replacement Taxes.....	\$5,174
Lottery Revenues.....	\$48,892
Technology Grant.....	\$50,160

Expenditures:	Total	%	ADA	Rank
M & O Instruction	\$4,640,775	62.03%		
M & O Support Services	2,836,035	37.91%		
M & O Other	4,800	0.06%		
Total M & O	\$7,481,610	100.00%	\$7,040	56
Total All Funds	\$8,845,018	100.00%	\$8,322	85

Tax Levies 9-1-2006

	Total	Per ADA	Rank
Property Market Values	\$418,761,332	\$394,017	47
Total General M & O Levies	0.001937910		29
Total District Levies	0.001937910		80

Staff Data 2006-07

Personnel:	FTE	ADA To FTE	Teachers Salaries:	Rank
Elementary Teachers	35.25	15	Beginning Salary on Schedule	\$30,000
Secondary Teachers	35.02	16	Highest Salary on Schedule	\$49,410
Administrators	5.98	178	Average Elementary Teacher's Salary	\$42,862 45
Other Certified Staff	5.00	213	Average Secondary Teacher's Salary	\$41,501 81
Total Certified Staff	81.25	13	Average Superintendent's Salary	\$108,069 11
Total Non-Certified Staff	49.87	21		

Note: Rank represents how this district compares to the other public school districts in the State of Idaho; high to low (1 being the highest).



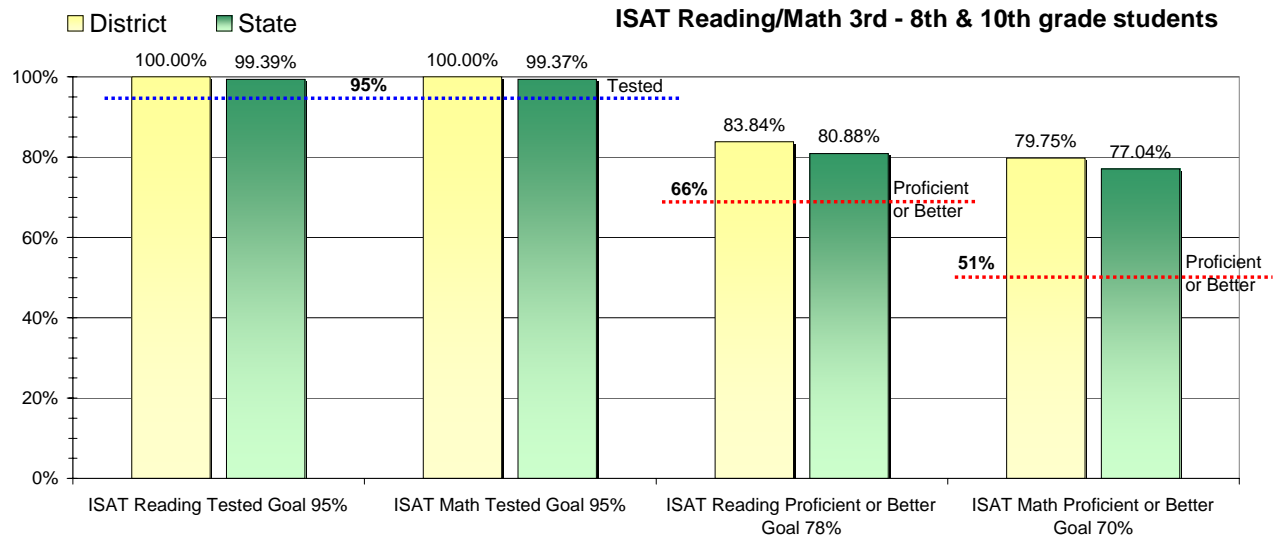
Adequate Yearly Progress and Assessment 2006-07

Did St Maries Jt District make Adequate yearly progress for 2006-07? No

Percent of the 41 targets that St Maries Jt District made: 92.68%

The goal in our nation is for all students in grades 3 through 8 and 10 to be proficient in reading and math by the spring of 2014. Idaho uses the Idaho Standards Achievement Test (ISAT) and the Idaho Alternate Assessment (IAA) to measure proficiency. This report shows the percentage of students who met state goals for proficiency in reading and math.

More Information is available at: <http://www.sde.state.id.us/AYP/Ayp07/default.asp>



To Protect the privacy of individual students the following symbols are used.

^No participation determinations are made for groups of less than 10 students. The participation rate of students in this group is included in district and state totals.

- No proficiency determinations are made for groups of less than 34 students. The proficiency level of students in this group is included in district and state totals

3rd Indicator - Graduation Rate		
2005	2006	Goal
86.67%	85.57%	Met