

Plummer-Worley Jt District #044

Benewah County
 1157 E St, PO Box 130, Plummer, ID 83851
 Phone: (208) 686-1621 Fax: (208) 686-1019
 George Olsen, Superintendent

District Characteristics 2006-07

| | | | |
|-----------------------------------|-----|---|--------|
| Fall Enrollment | 478 | Special Education: | |
| Average Daily Attendance..... | 420 | Special Education Students..... | 61 |
| State Ranking Per ADA..... | 80 | Gifted and Talented Students..... | 0 |
| Number of Schools (sites): | | Number of LEP Students**..... | 0 |
| Elementary..... | 1 | National School Lunch Program: | |
| Secondary..... | 2 | Average Daily Participation..... | 351 |
| Number of Accredited Schools: | | Free and Reduced Meals..... | 333 |
| Approved..... | 3 | Lunch Price - Elementary..... | \$1.75 |
| Approved with Merit..... | 0 | Lunch Price - Secondary..... | \$2.00 |
| Approved with Comment..... | 0 | Pupil Transportation Program: | |
| Not Approved..... | 0 | Average Daily Ridership 2005-06 | 260 |
| High School Diplomas Regular..... | 20 | District Owned Operation | |
| Other Completions* | 0 | * Certificates of Completion issued by the district | |
| Graduation Completion Rate... | 67% | ** Limited English Proficient (LEP) | |

Highlights

Even though the district struggles with NCLB and meeting or surpassing the bar, I am very proud of the fact generally we show a growth pattern in yearly test scores. I guess in our district we don't buy the whole loaf of bread at once, but we buy it a slice or two at a time. Progress for us is measured in our growth. We continue to maintain accreditation in all three buildings. We are more than willing to sustain, as financially possible, our efforts to seek continued growth for all students at all grade levels. We will continue our curriculum alignment work and provide the best possible learning environment for our students. The district continues to its efforts to retain highly qualified staff and reduce turnover. Student accountability for attendance, behavior and performance continues to be a higher expectation. This has assisted in reducing our dropout rate to single digits from a high of well over 20% a few years ago.

Progress Towards Meeting Goals

2006-07 Goals

Progress

Continue to improve AYP, IRI, DWA and DMA assessment benchmarks

While the district has two buildings in 3rd year of improvement, our goal is to continue growth patterns as seen in recent years.

Create funding sources to assist in maintaining fiscal restraint to balance the budget

The district continues to work with dwindling and limited resources to provide a quality education for students.

Complete the School Improvement Plan

We continue to identify those areas of concern in an effort to assist students in their learning endeavor and environment.

Seek bonding in 07-08 for the construction of a new district-wide elementary school
 Maintain the technology plan to facilitate learning and keep the district on the cutting edge of current technology

The purpose is to update aged and deteriorating facilities build in the 1930's.

We will update our technology plan to continue to integrate computer assisted instruction.

To provide continued support for curriculum development and improvement

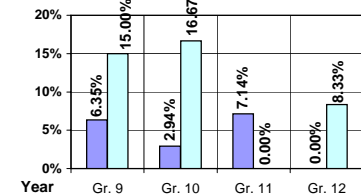
We will finish curriculum guides for alignment with state standards in the core areas.

Student Profiles

Ethnicity

| Race | Male | Female | Total |
|------------|--------|--------|---------|
| White | 15.26% | 16.11% | 31.37% |
| Black | 0.21% | 0.42% | 0.63% |
| Hispanic | 0.63% | 0.63% | 1.26% |
| Nat. Amer. | 25.31% | 35.15% | 60.46% |
| Asian/Pac | 5.44% | 0.84% | 6.28% |
| Total | 46.85% | 53.15% | 100.00% |

Dropouts



| Year | Gr. 9 | Gr. 10 | Gr. 11 | Gr. 12 |
|-------|-------|--------|--------|--------|
| 05-06 | 4 | 1 | 2 | 0 |
| 06-07 | 9 | 5 | 0 | 2 |

Financial Information 2006-07

| | M & O Fund | % | All Funds | % |
|------------------|--------------------|----------------|--------------------|----------------|
| Revenues: | | | | |
| Local Taxes | \$52,563 | 1.15% | \$52,563 | 0.89% |
| Other Sources | 153,796 | 3.37% | 451,785 | 7.63% |
| State | 3,098,791 | 67.92% | 3,221,842 | 54.43% |
| Federal | 1,257,570 | 27.56% | 2,193,440 | 37.05% |
| Total | \$4,562,720 | 100.00% | \$5,919,630 | 100.00% |

Supplemental Information

| | |
|--|----------|
| Property and Agricultural Equipment Replacement Taxes..... | \$37,324 |
| Lottery Revenues..... | \$20,949 |
| Technology Grant..... | \$34,195 |

| Expenditures: | Total | % | ADA | Rank |
|------------------------|--------------------|----------------|-----------------|-----------|
| M & O Instruction | \$1,911,199 | 43.11% | | |
| M & O Support Services | 2,520,949 | 56.86% | | |
| M & O Other | 1,469 | 0.03% | | |
| Total M & O | \$4,433,617 | 100.00% | \$10,555 | 15 |
| Total All Funds | \$6,071,066 | 100.00% | \$14,454 | 16 |

| Tax Levies 9-1-2006 | Total | Per ADA | Rank |
|----------------------------|---------------|-------------|------|
| Property Market Values | \$526,033,080 | \$1,252,370 | 14 |
| Total General M & O Levies | 0.000040757 | | 97 |
| Total District Levies | 0.000040757 | | 113 |

Staff Data 2006-07

| Personnel: | FTE | ADA To FTE | Teachers Salaries: | Rank |
|---------------------------|-------|------------|-------------------------------------|--------------|
| Elementary Teachers | 18.60 | 12 | Beginning Salary on Schedule | \$30,000 |
| Secondary Teachers | 21.82 | 9 | Highest Salary on Schedule | \$42,438 |
| Administrators | 5.14 | 82 | Average Elementary Teacher's Salary | \$35,451 130 |
| Other Certified Staff | 5.67 | 74 | Average Secondary Teacher's Salary | \$40,228 101 |
| Total Certified Staff | 51.23 | 8 | Average Superintendent's Salary | \$74,160 91 |
| Total Non-Certified Staff | 36.14 | 12 | | |

Note: Rank represents how this district compares to the other public school districts in the State of Idaho; high to low (1 being the highest).



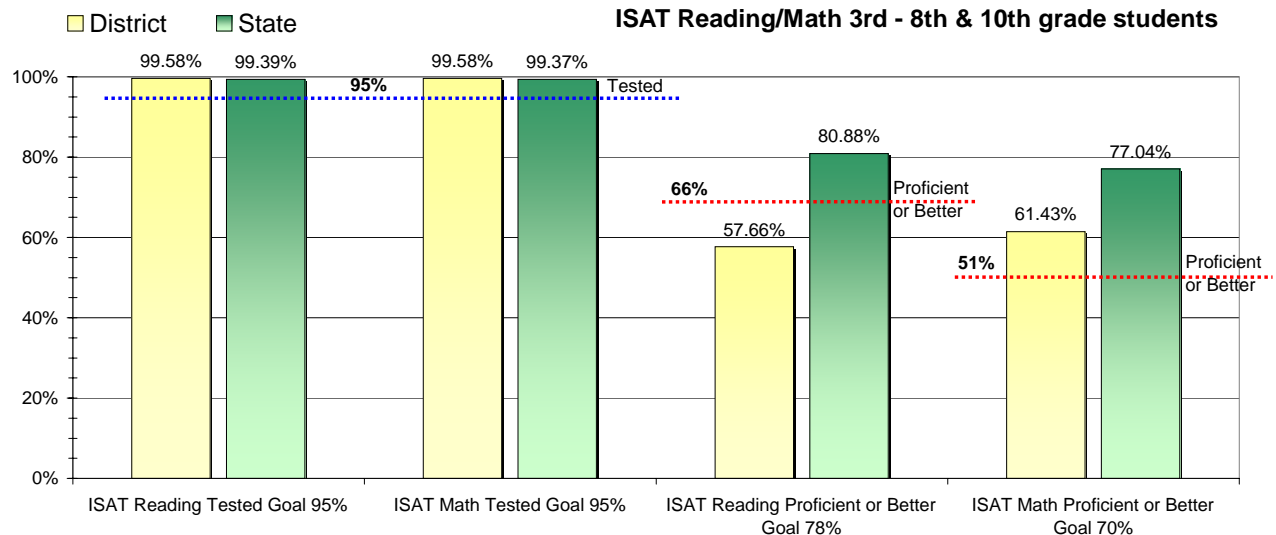
Adequate Yearly Progress and Assessment 2006-07

Did Plummer-Worley Jt District make Adequate yearly progress for 2006-07? No

Percent of the 41 targets that Plummer-Worley Jt District made: 78.05%

The goal in our nation is for all students in grades 3 through 8 and 10 to be proficient in reading and math by the spring of 2014. Idaho uses the Idaho Standards Achievement Test (ISAT) and the Idaho Alternate Assessment (IAA) to measure proficiency. This report shows the percentage of students who met state goals for proficiency in reading and math.

More Information is available at: <http://www.sde.state.id.us/AYP/Ayp07/default.asp>



To Protect the privacy of individual students the following symbols are used.

^No participation determinations are made for groups of less than 10 students. The participation rate of students in this group is included in district and state totals.

~ No proficiency determinations are made for groups of less than 34 students. The proficiency level of students in this group is included in district and state totals

| 3rd Indicator - Graduation Rate | | |
|---------------------------------|------|------|
| 2005 | 2006 | Goal |
| 56.52% | 50% | Met |