

Blaine County District #061

Blaine County
 118 W Bullion St, Hailey, ID 83333
 Phone: (208) 578-5000 Fax: (208) 578-5110
 Jim Lewis, Superintendent

District Characteristics 2006-07			
Fall Enrollment	3,175	Special Education:	
Average Daily Attendance.....	3,051	Special Education Students.....	337
State Ranking Per ADA.....	23	Gifted and Talented Students.....	214
Number of Schools (sites):		Number of LEP Students**.....	513
Elementary.....	6	National School Lunch Program:	
Secondary.....	4	Average Daily Participation.....	1,180
Number of Accredited Schools:		Free and Reduced Meals.....	752
Approved.....	7	Lunch Price - Elementary.....	\$2.00
Approved with Merit.....	0	Lunch Price - Secondary.....	\$2.50
Approved with Comment.....	0	Pupil Transportation Program:	
Not Approved.....	0	Average Daily Ridership 2005-06	1,191
High School Diplomas Regular.....	173	District Owned Operation	
Other Completions*	6		
Graduation Completion Rate...	87%	* Certificates of Completion issued by the district	
		** Limited English Proficient (LEP)	

Highlights

The Work Force Housing units at Carey will be built by students through our Residential Construction Academy.

The pilot Preschools performed beyond expectation with some parents committing to a three day week, who later extended that to a five day week.

The properties for future new schools were donated by the developers.

The transition to Neighborhood Schools has united the neighborhoods in their individual school support and actually created a community hub for the Woodside area.

Continuous improvement through life-long learning reached new heights for our District with Professional Learning Book Clubs in every school and the District Office departments.

Progress Towards Meeting Goals

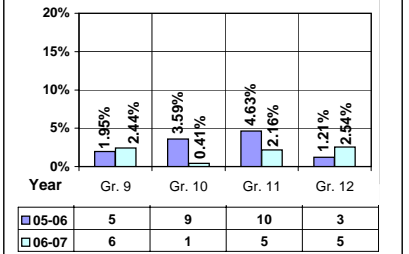
2006-07 Goals	Progress
No Data Submitted	

Student Profiles

Ethnicity

Race	Male	Female	Total
White	39.23%	35.50%	74.73%
Black	0.06%	0.00%	0.06%
Hispanic	12.41%	11.59%	24.00%
Nat. Amer.	0.06%	0.22%	0.28%
Asian/Pac	0.59%	0.34%	0.93%
Total	52.35%	47.65%	100.00%

Dropouts



Financial Information 2006-07

	M & O Fund	%	All Funds	%
Revenues:				
Local Taxes	\$32,410,906	66.42%	\$32,543,298	60.79%
Other Sources	661,199	1.36%	2,275,731	4.25%
State	15,722,513	32.22%	17,182,006	32.10%
Federal	0	0.00%	1,530,222	2.86%
Total	\$48,794,618	100.00%	\$53,531,257	100.00%

Supplemental Information

Property and Agricultural Equipment Replacement Taxes.....	\$26,046
Lottery Revenues.....	\$143,014
Technology Grant.....	\$101,492

Expenditures:	Total	%	ADA	Rank
M & O Instruction	\$25,215,929	65.78%		
M & O Support Services	12,996,802	33.91%		
M & O Other	119,562	0.31%		
Total M & O	\$38,332,293	100.00%	\$12,565	9
Total All Funds	\$50,625,796	100.00%	\$16,595	11

Tax Levies 9-1-2006

	Total	Per ADA	Rank
Property Market Values	\$11,776,823,237	\$3,860,380	2
Total General M & O Levies	0.002743185		18
Total District Levies	0.002743185		62

Staff Data 2006-07

Personnel:	FTE	ADA To FTE	Teachers Salaries:	Rank
Elementary Teachers	135.76	13	Beginning Salary on Schedule	\$34,442
Secondary Teachers	108.29	12	Highest Salary on Schedule	\$70,454
Administrators	16.77	182	Average Elementary Teacher's Salary	\$61,198 3
Other Certified Staff	23.10	132	Average Secondary Teacher's Salary	\$65,139 1
Total Certified Staff	283.92	11	Average Superintendent's Salary	\$150,016 2
Total Non-Certified Staff	160.31	19		

Note: Rank represents how this district compares to the other public school districts in the State of Idaho; high to low (1 being the highest).



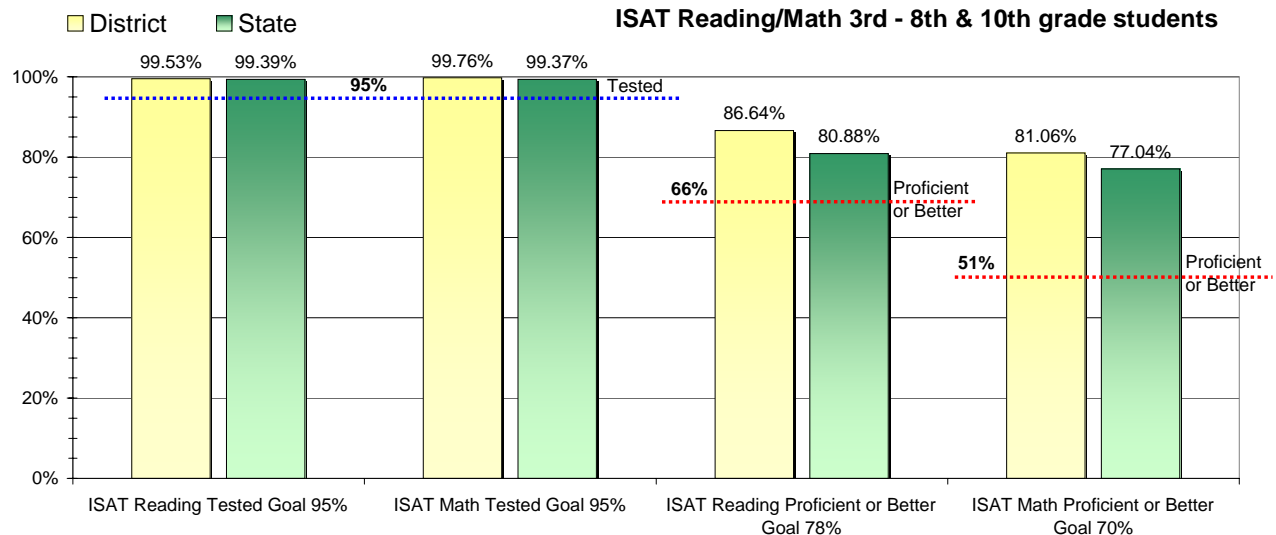
Adequate Yearly Progress and Assessment 2006-07

Did Blaine County District make Adequate yearly progress for 2006-07? No

Percent of the 41 targets that Blaine County District made: 80.49%

The goal in our nation is for all students in grades 3 through 8 and 10 to be proficient in reading and math by the spring of 2014. Idaho uses the Idaho Standards Achievement Test (ISAT) and the Idaho Alternate Assessment (IAA) to measure proficiency. This report shows the percentage of students who met state goals for proficiency in reading and math.

More Information is available at: <http://www.sde.state.id.us/AYP/Ayp07/default.asp>



To Protect the privacy of individual students the following symbols are used.

^ No participation determinations are made for groups of less than 10 students. The participation rate of students in this group is included in district and state totals.

~ No proficiency determinations are made for groups of less than 34 students. The proficiency level of students in this group is included in district and state totals

3rd Indicator - Graduation Rate		
2005	2006	Goal
83.41%	91.76%	Met