

Garden Valley District #071

Boise County
 1076 Banks Lowman Rd, PO Box 710, Garden Valley, ID 83622
 Phone: (208) 462-3756 Fax: (208) 462-3570
 Vic Koshuta, Superintendent

District Characteristics 2006-07

Fall Enrollment	243	Special Education:	
Average Daily Attendance.....	221	Special Education Students.....	19
State Ranking Per ADA.....	107	Gifted and Talented Students.....	2
Number of Schools (sites):		Number of LEP Students**.....	0
Elementary.....	2	National School Lunch Program:	
Secondary.....	1	Average Daily Participation.....	138
Number of Accredited Schools:		Free and Reduced Meals.....	80
Approved.....	2	Lunch Price - Elementary.....	\$1.75
Approved with Merit.....	0	Lunch Price - Secondary.....	\$2.00
Approved with Comment.....	0	Pupil Transportation Program:	
Not Approved.....	0	Average Daily Ridership 2005-06	109
High School Diplomas Regular.....	17	Contracted Operation	
Other Completions*	0	* Certificates of Completion issued by the district	
Graduation Completion Rate...	100%	** Limited English Proficient (LEP)	

Highlights

The District implemented a k-12 Spanish program with the goal of graduating bilingual students.

The District increased graduation requirements in math and science and will require two years of a foreign language in addition to the state required humanity credits. Furthermore, the District requires four years of social studies.

The District passed a \$400,000 supplemental levy which guarantees for the next two years the continuation of the graduation requirements and programs listed above.

The District successfully downloaded and administered the new Spring ISAT with no technical glitches.

Progress Towards Meeting Goals

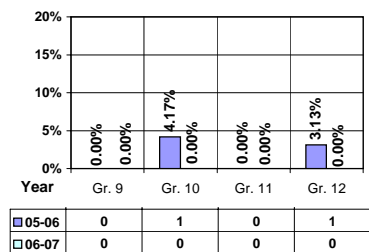
2006-07 Goals	Progress
Increase graduation requirements	Achieved
Implement a k-12 Spanish program	Achieved
Meet AYP Goals	To be determined
Pass supplemental levy to support educational programs	Achieved
Meet state mandated IRI goals	Achieved
Meet or exceed state and federal regulations and requirements to operate the District's waste water treatment facility	Achieved

Student Profiles

Ethnicity

Race	Male	Female	Total
White	51.87%	42.80%	94.67%
Black	1.23%	0.00%	1.23%
Hispanic	0.41%	1.23%	1.64%
Nat. Amer.	0.00%	0.82%	0.82%
Asian/Pac	0.82%	0.82%	1.64%
Total	54.33%	45.67%	100.00%

Dropouts



Financial Information 2006-07

	M & O Fund	%	All Funds	%
Revenues:				
Local Taxes	\$170,299	8.32%	\$170,479	6.78%
Other Sources	54,583	2.67%	106,939	4.25%
State	1,822,732	89.01%	1,900,119	75.60%
Federal	0	0.00%	335,923	13.37%
Total	\$2,047,614	100.00%	\$2,513,460	100.00%

Supplemental Information

Property and Agricultural Equipment Replacement Taxes.....	\$293
Lottery Revenues.....	\$11,831
Technology Grant.....	\$28,772

Expenditures:	Total	%	ADA	Rank
M & O Instruction	\$1,018,891	53.87%		
M & O Support Services	870,940	46.05%		
M & O Other	1,539	0.08%		
Total M & O	\$1,891,370	100.00%	\$8,573	33
Total All Funds	\$2,404,574	100.00%	\$10,900	43

Tax Levies 9-1-2006

	Total	Per ADA	Rank
Property Market Values	\$339,180,421	\$1,537,466	10
Total General M & O Levies	0.000405338		74
Total District Levies	0.000405338		109

Staff Data 2006-07

Personnel:	FTE	ADA To FTE	Teachers Salaries:	Rank
Elementary Teachers	9.48	12	Beginning Salary on Schedule	\$30,000
Secondary Teachers	9.60	12	Highest Salary on Schedule	\$48,113
Administrators	1.70	130	Average Elementary Teacher's Salary	\$42,044 59
Other Certified Staff	1.46	151	Average Secondary Teacher's Salary	\$37,908 126
Total Certified Staff	22.24	10	Average Superintendent's Salary	\$78,000 76
Total Non-Certified Staff	13.94	16		

Note: Rank represents how this district compares to the other public school districts in the State of Idaho; high to low (1 being the highest).



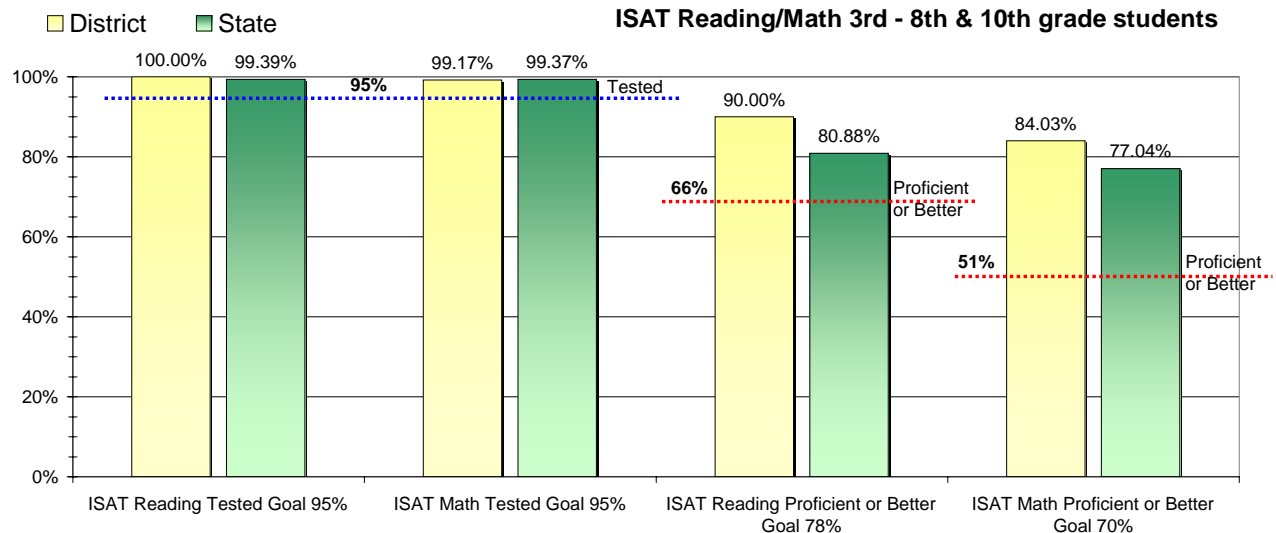
Adequate Yearly Progress and Assessment 2006-07

Did Garden Valley District make Adequate yearly progress for 2006-07? Yes

Percent of the 41 targets that Garden Valley District made: 100%

The goal in our nation is for all students in grades 3 through 8 and 10 to be proficient in reading and math by the spring of 2014. Idaho uses the Idaho Standards Achievement Test (ISAT) and the Idaho Alternate Assessment (IAA) to measure proficiency. This report shows the percentage of students who met state goals for proficiency in reading and math.

More Information is available at: <http://www.sde.state.id.us/AYP/Ayp07/default.asp>



To Protect the privacy of individual students the following symbols are used.

^No participation determinations are made for groups of less than 10 students. The participation rate of students in this group is included in district and state totals.

~ No proficiency determinations are made for groups of less than 34 students. The proficiency level of students in this group is included in district and state totals

3rd Indicator - Graduation Rate

2005	2006	Goal
100%	96.67%	Met