

Basin School District #072

Boise County
 100 Centerville Rd, PO Box 227, Idaho City, ID 83631
 Phone: (208) 392-4183 Fax: (208) 392-9954
 Frank Gallant, Superintendent

District Characteristics 2006-07			
Fall Enrollment	459	Special Education:	
Average Daily Attendance.....	413	Special Education Students.....	44
State Ranking Per ADA.....	81	Gifted and Talented Students.....	29
Number of Schools (sites):		Number of LEP Students**.....	0
Elementary.....	1	National School Lunch Program:	
Secondary.....	1	Average Daily Participation.....	287
Number of Accredited Schools:		Free and Reduced Meals.....	171
Approved.....	2	Lunch Price - Elementary.....	\$1.80
Approved with Merit.....	0	Lunch Price - Secondary.....	\$1.95
Approved with Comment.....	0	Pupil Transportation Program:	
Not Approved.....	0	Average Daily Ridership 2005-06	242
High School Diplomas Regular.....	24	District Owned Operation	
Other Completions*	0		
Graduation Completion Rate...	96%	* Certificates of Completion issued by the district	
		** Limited English Proficient (LEP)	

Highlights

No Data Submitted

Progress Towards Meeting Goals

2006-07 Goals

Progress

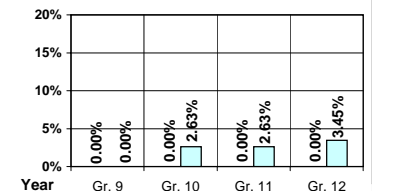
No Data Submitted

Student Profiles

Ethnicity

Race	Male	Female	Total
White	48.14%	45.10%	93.24%
Black	1.74%	0.44%	2.18%
Hispanic	0.44%	1.96%	2.40%
Nat. Amer.	1.09%	0.87%	1.96%
Asian/Pac	0.00%	0.22%	0.22%
Total	51.41%	48.59%	100.00%

Dropouts



Year	Gr. 9	Gr. 10	Gr. 11	Gr. 12
05-06	0	0	0	0
06-07	0	1	1	1

Financial Information 2006-07

	M & O Fund	%	All Funds	%
Revenues:				
Local Taxes	\$236,165	7.85%	\$542,689	13.38%
Other Sources	78,230	2.60%	153,412	3.78%
State	2,692,537	89.55%	2,745,624	67.67%
Federal	0	0.00%	615,617	15.17%
Total	\$3,006,932	100.00%	\$4,057,342	100.00%

Supplemental Information

Property and Agricultural Equipment Replacement Taxes.....	\$429
Lottery Revenues.....	\$18,806
Technology Grant.....	\$33,091

Expenditures:	Total	%	ADA	Rank
M & O Instruction	\$1,659,459	58.63%		
M & O Support Services	1,171,143	41.37%		
M & O Other	0	0.00%		
Total M & O	\$2,830,602	100.00%	\$6,855	62
Total All Funds	\$3,926,130	100.00%	\$9,508	57

Tax Levies 9-1-2006	Total	Per ADA	Rank
Property Market Values	\$257,365,187	\$623,236	24
Total General M & O Levies	0.000135201		80
Total District Levies	0.001642534		89

Staff Data 2006-07

Personnel:	FTE	ADA To FTE	Teachers Salaries:	Rank
Elementary Teachers	14.29	16	Beginning Salary on Schedule	\$30,000
Secondary Teachers	14.37	16	Highest Salary on Schedule	\$49,362
Administrators	3.09	134	Average Elementary Teacher's Salary	\$37,069 118
Other Certified Staff	2.40	172	Average Secondary Teacher's Salary	\$38,818 122
Total Certified Staff	34.15	12	Average Superintendent's Salary	\$82,170 59
Total Non-Certified Staff	25.03	16		

Note: Rank represents how this district compares to the other public school districts in the State of Idaho; high to low (1 being the highest).



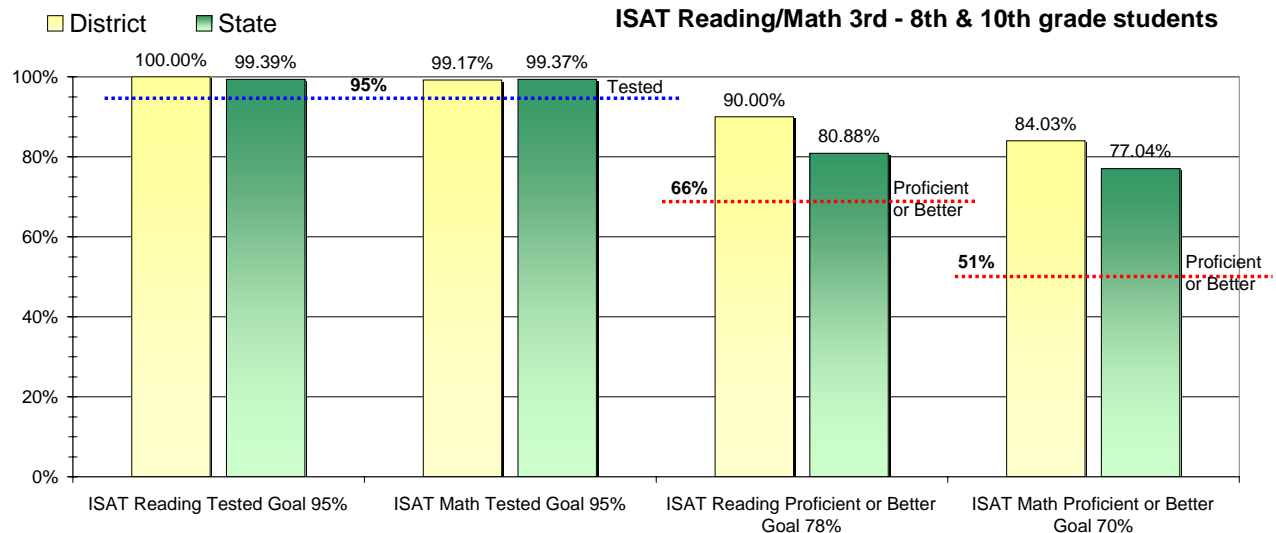
Adequate Yearly Progress and Assessment 2006-07

Did Basin School District make Adequate yearly progress for 2006-07? No

Percent of the 41 targets that Basin School District made: 95.12%

The goal in our nation is for all students in grades 3 through 8 and 10 to be proficient in reading and math by the spring of 2014. Idaho uses the Idaho Standards Achievement Test (ISAT) and the Idaho Alternate Assessment (IAA) to measure proficiency. This report shows the percentage of students who met state goals for proficiency in reading and math.

More Information is available at: <http://www.sde.state.id.us/AYP/Ayp07/default.asp>



To protect the privacy of individual students the following symbols are used.

^ No participation determinations are made for groups of less than 10 students. The participation rate of students in this group is included in district and state totals.

~ No proficiency determinations are made for groups of less than 34 students. The proficiency level of students in this group is included in district and state totals

3rd Indicator - Graduation Rate		
2005	2006	Goal
96.77%	100%	Met