

## West Bonner County District #083

Bonner County  
 119 S Main St, PO Box 2531, Priest River, ID 83856  
 Phone: (208) 448-4439 Fax: (208) 448-4629  
 Mike McGuire, Superintendent

### District Characteristics 2006-07

Fall Enrollment .....	1,572	Special Education:	
Average Daily Attendance.....	1,497	Special Education Students.....	182
State Ranking Per ADA.....	35	Gifted and Talented Students.....	93
Number of Schools (sites):		Number of LEP Students**.....	0
Elementary.....	3	National School Lunch Program:	
Secondary.....	3	Average Daily Participation.....	844
Number of Accredited Schools:		Free and Reduced Meals.....	829
Approved.....	5	Lunch Price - Elementary.....	\$1.75
Approved with Merit.....	0	Lunch Price - Secondary.....	\$2.00
Approved with Comment.....	1	Pupil Transportation Program:	
Not Approved.....	0	Average Daily Ridership 2005-06	704
High School Diplomas Regular.....	118	District Owned Operation	
Other Completions* .....	2		
Graduation Completion Rate...	95%	* Certificates of Completion issued by the district	
		** Limited English Proficient (LEP)	

### Highlights

No Data Submitted

### Progress Towards Meeting Goals

#### 2006-07 Goals

#### Progress

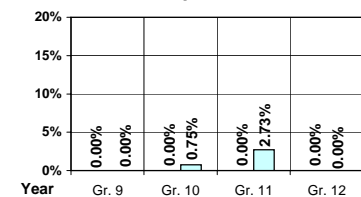
No Data Submitted

### Student Profiles

#### Ethnicity

Race	Male	Female	Total
White	50.38%	46.12%	96.50%
Black	0.13%	0.13%	0.26%
Hispanic	1.02%	0.70%	1.72%
Nat. Amer.	0.83%	0.38%	1.21%
Asian/Pac	0.12%	0.19%	0.31%
<b>Total</b>	<b>52.48%</b>	<b>47.52%</b>	<b>100.00%</b>

### Dropouts



Year	Gr. 9	Gr. 10	Gr. 11	Gr. 12
05-06	0	0	0	0
06-07	0	1	3	0

### Financial Information 2006-07

	M & O Fund	%	All Funds	%
<b>Revenues:</b>				
Local Taxes	\$977,392	10.64%	\$977,392	8.85%
Other Sources	275,925	3.00%	454,043	4.11%
State	7,933,905	86.36%	8,151,400	73.83%
Federal	0	0.00%	1,457,310	13.21%
<b>Total</b>	<b>\$9,187,222</b>	<b>100.00%</b>	<b>\$11,040,145</b>	<b>100.00%</b>

#### Supplemental Information

Property and Agricultural Equipment Replacement Taxes.....	\$9,423
Lottery Revenues.....	\$67,696
Technology Grant.....	\$61,862

Expenditures:	Total	%	ADA	Rank
M & O Instruction	\$5,400,276	58.84%		
M & O Support Services	3,630,467	39.56%		
M & O Other	147,487	1.60%		
<b>Total M &amp; O</b>	<b>\$9,178,230</b>	<b>100.00%</b>	<b>\$6,132</b>	<b>81</b>
<b>Total All Funds</b>	<b>\$10,973,723</b>	<b>100.00%</b>	<b>\$7,331</b>	<b>116</b>

#### Tax Levies 9-1-2006

	Total	Per ADA	Rank
Property Market Values	\$1,665,061,518	\$1,112,347	15
Total General M & O Levies	0.000479888		72
Total District Levies	0.000479888		108

### Staff Data 2006-07

Personnel:	FTE	ADA To FTE	Teachers Salaries:	Rank
Elementary Teachers	42.94	18	Beginning Salary on Schedule	\$30,000
Secondary Teachers	48.99	15	Highest Salary on Schedule	\$48,117
Administrators	7.01	214	Average Elementary Teacher's Salary	\$40,397 77
Other Certified Staff	8.26	181	Average Secondary Teacher's Salary	\$39,255 116
Total Certified Staff	107.20	14	Average Superintendent's Salary	\$85,292 46
Total Non-Certified Staff	61.04	25		

Note: Rank represents how this district compares to the other public school districts in the State of Idaho; high to low (1 being the highest).



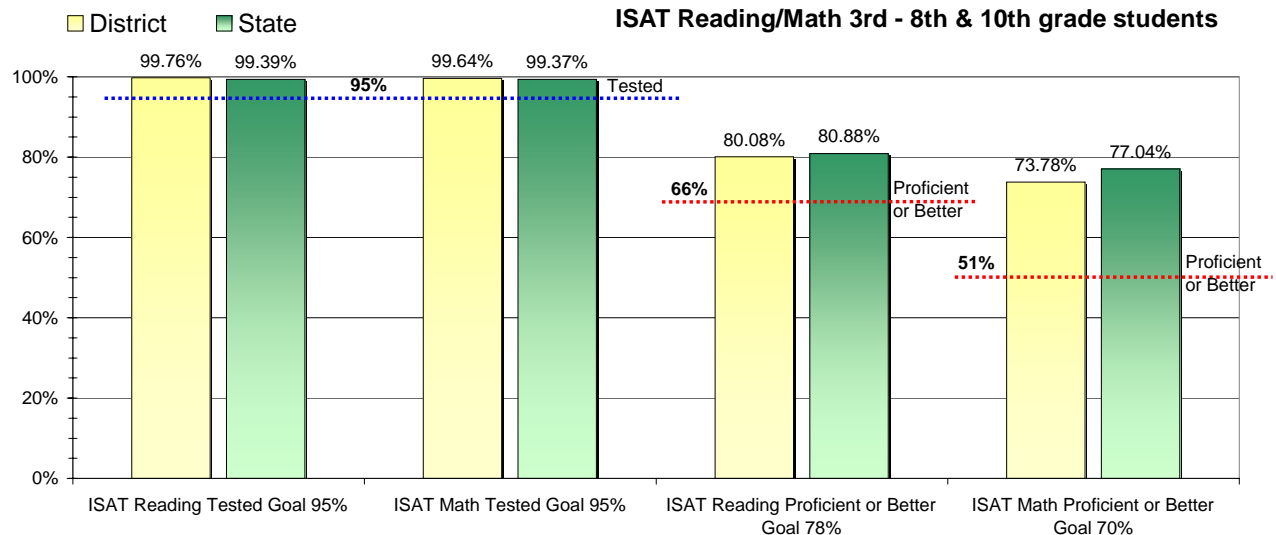
### Adequate Yearly Progress and Assessment 2006-07

Did West Bonner County District make Adequate yearly progress for 2006-07? No

Percent of the 41 targets that West Bonner County District made: 90.24%

The goal in our nation is for all students in grades 3 through 8 and 10 to be proficient in reading and math by the spring of 2014. Idaho uses the Idaho Standards Achievement Test (ISAT) and the Idaho Alternate Assessment (IAA) to measure proficiency. This report shows the percentage of students who met state goals for proficiency in reading and math.

More Information is available at: <http://www.sde.state.id.us/AYP/Ayp07/default.asp>



To Protect the privacy of individual students the following symbols are used.

^No participation determinations are made for groups of less than 10 students. The participation rate of students in this group is included in district and state totals.

~ No proficiency determinations are made for groups of less than 34 students. The proficiency level of students in this group is included in district and state totals

#### 3rd Indicator - Graduation Rate

2005	2006	Goal
87.22%	96.43%	Met