

Boundary County District #101

Boundary County
 6577 Main St. Suite 101, Bonners Ferry, ID 83805
 Phone: (208) 267-3146 Fax: (208) 267-7217
 Dr. Don Bartling, Superintendent

District Characteristics 2006-07

Fall Enrollment	1,604	Special Education:	
Average Daily Attendance.....	1,488	Special Education Students.....	200
State Ranking Per ADA.....	36	Gifted and Talented Students.....	31
Number of Schools (sites):		Number of LEP Students**.....	69
Elementary.....	4	National School Lunch Program:	
Secondary.....	3	Average Daily Participation.....	762
Number of Accredited Schools:		Free and Reduced Meals.....	786
Approved.....	7	Lunch Price - Elementary.....	\$2.00
Approved with Merit.....	0	Lunch Price - Secondary.....	\$2.25
Approved with Comment.....	0	Pupil Transportation Program:	
Not Approved.....	0	Average Daily Ridership 2005-06	811
High School Diplomas Regular.....	102	District Owned Operation	
Other Completions*	3	* Certificates of Completion issued by the district	
Graduation Completion Rate...	83%	** Limited English Proficient (LEP)	

Highlights

The Boundary Co. School District #101 dedicated their new High School on January 6, 2005. The new High School has 91,000 square feet of modern educational space. This is an increase of about 25,000 square feet over the previous High School that was converted to a Middle School. The majority of the space added to the new High School was for classrooms and the new auditorium. The media center has been enlarged and has an adjacent computer lab. All classrooms are wired for computers, cable TV and telephones.

The old Junior High and Central Office complex was converted to the Riverside High School (alternative school) during the summer of 2006. The students now enjoy much larger facility with the 8,300 square foot building for their alternative program.

Technology growth and advancement continues to be a priority in the district.

Overall the district is moving forward with each buildings school improvement plan.

The District passed a two year supplemental Maintenance and Operation levy on March 27, 2007 in the amount of \$885,845.

Progress Towards Meeting Goals

2006-07 Goals

Progress

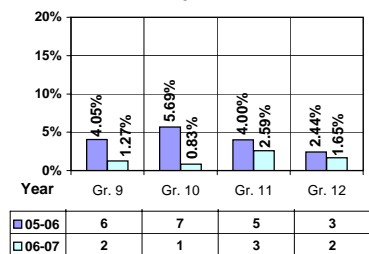
School improvement plan	The District continues to make progress with the School improvement plan that began three years ago.
Maintain a contingency fund	The District is trying to save enough money to create a contingency fund.
Provide adequate funding for school programs.	The District passed a supplemental maintenance and operation levy in the amount of \$885,845 on March 27, 2007.
Ten year facility plan	The District started a ten year facility plan in June of 2007.

Student Profiles

Ethnicity

Race	Male	Female	Total
White	47.07%	43.83%	90.90%
Black	0.50%	0.44%	0.94%
Hispanic	2.87%	2.87%	5.74%
Nat. Amer.	0.94%	0.87%	1.81%
Asian/Pac	0.18%	0.43%	0.61%
Total	51.56%	48.44%	100.00%

Dropouts



Financial Information 2006-07

	M & O Fund	%	All Funds	%
Revenues:				
Local Taxes	\$1,003,133	9.93%	\$1,875,827	14.47%
Other Sources	500,532	4.95%	696,955	5.38%
State	8,548,858	84.62%	8,798,304	67.86%
Federal	50,255	0.50%	1,594,140	12.29%
Total	\$10,102,778	100.00%	\$12,965,226	100.00%

Supplemental Information

Property and Agricultural Equipment Replacement Taxes.....	\$32,944
Lottery Revenues.....	\$68,858
Technology Grant.....	\$62,315

Expenditures:	Total	%	ADA	Rank
M & O Instruction	\$5,959,478	60.42%		
M & O Support Services	3,871,995	39.26%		
M & O Other	32,164	0.32%		
Total M & O	\$9,863,637	100.00%	\$6,629	66
Total All Funds	\$12,896,205	100.00%	\$8,667	80

Tax Levies 9-1-2006	Total	Per ADA	Rank
Property Market Values	\$727,669,047	\$489,054	34
Total General M & O Levies	0.001168721		43
Total District Levies	0.002346347		71

Staff Data 2006-07

Personnel:	FTE	ADA To FTE	Teachers Salaries:	Rank
Elementary Teachers	46.84	18	Beginning Salary on Schedule	\$30,000
Secondary Teachers	48.57	15	Highest Salary on Schedule	\$46,617
Administrators	8.25	180	Average Elementary Teacher's Salary	\$42,248 56
Other Certified Staff	8.46	176	Average Secondary Teacher's Salary	\$42,786 65
Total Certified Staff	112.12	13	Average Superintendent's Salary	\$86,489 40
Total Non-Certified Staff	66.25	22		

Note: Rank represents how this district compares to the other public school districts in the State of Idaho; high to low (1 being the highest).



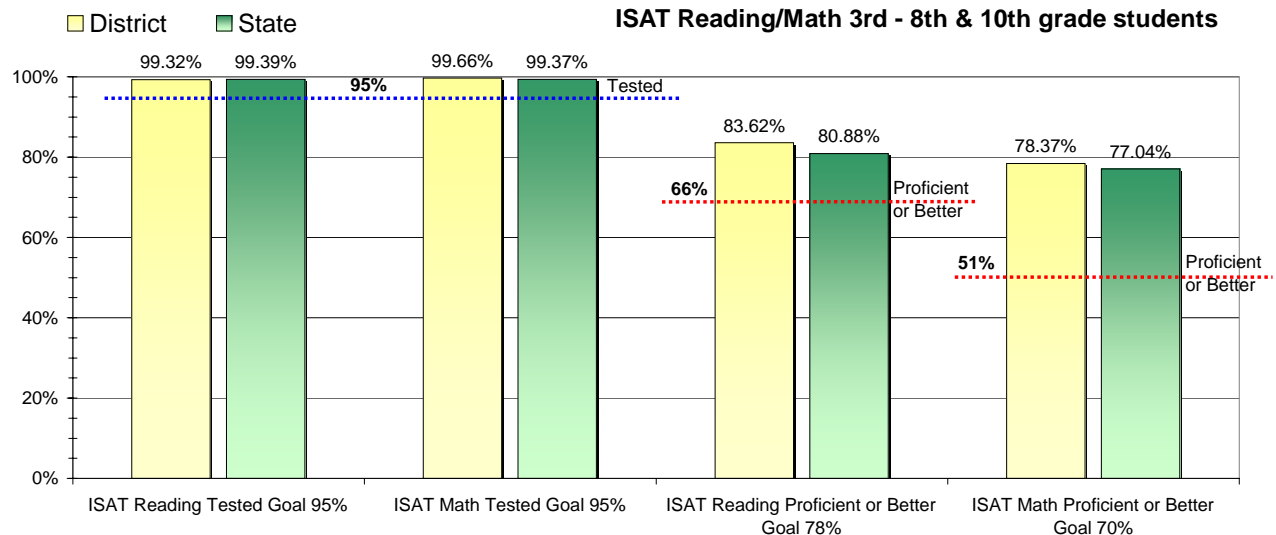
Adequate Yearly Progress and Assessment 2006-07

Did Boundary County District make Adequate yearly progress for 2006-07? No

Percent of the 41 targets that Boundary County District made: 92.68%

The goal in our nation is for all students in grades 3 through 8 and 10 to be proficient in reading and math by the spring of 2014. Idaho uses the Idaho Standards Achievement Test (ISAT) and the Idaho Alternate Assessment (IAA) to measure proficiency. This report shows the percentage of students who met state goals for proficiency in reading and math.

More Information is available at: <http://www.sde.state.id.us/AYP/Ayp07/default.asp>



To Protect the privacy of individual students the following symbols are used.

^ No participation determinations are made for groups of less than 10 students. The participation rate of students in this group is included in district and state totals.

~ No proficiency determinations are made for groups of less than 34 students. The proficiency level of students in this group is included in district and state totals

3rd Indicator - Graduation Rate		
2005	2006	Goal
76.35%	77.07%	Met