

Nampa School District #131

Canyon County
 619 S Canyon St, Nampa, ID 83686
 Phone: (208) 468-4600 Fax: (208) 468-4638
 Gary K. Larsen, Superintendent

District Characteristics 2006-07

Fall Enrollment	14,230	Special Education:	
Average Daily Attendance.....	13,072	Special Education Students.....	1,590
State Ranking Per ADA.....	3	Gifted and Talented Students.....	475
Number of Schools (sites):		Number of LEP Students**.....	1,423
Elementary.....	14	National School Lunch Program:	
Secondary.....	10	Average Daily Participation.....	8,055
Number of Accredited Schools:		Free and Reduced Meals.....	6,585
Approved.....	17	Lunch Price - Elementary.....	\$1.40
Approved with Merit.....	0	Lunch Price - Secondary.....	\$1.65
Approved with Comment.....	2	Pupil Transportation Program:	
Not Approved.....	0	Average Daily Ridership 2005-06	5,719
High School Diplomas Regular.....	580	Contracted Operation	
Other Completions*	0	* Certificates of Completion issued by the district	
Graduation Completion Rate...	80%	** Limited English Proficient (LEP)	

Highlights

The district began the year with the opening of its third high school -- Columbia -- and the news that overall student achievement in reading and math improved and the district's graduation rate climbed from 71% to 80%.

Schools used information from state adequate yearly progress reports to craft and implement intervention plans aimed at improving student achievement for our most at-risk students. The successful "Bridges" program offered at South Middle School and Skyview High School was recognized by the State Department of Education.

The district's three high schools held a first-ever combined registration for 2007-08. The event drew 80% of the students and their parents and allowed the schools to showcase the choices available through our innovative smaller learning communities, career-oriented academies, and specialty professional technical programs.

Progress Towards Meeting Goals

2006-07 Goals

Progress

Plan and create extra time for interventions

All buildings implemented school-wide interventions and many have found additional creative ways to provide more time and opportunities for students who are not yet meeting state standards.

Create a comprehensive professional development plan

A district professional development coordinator was hired and a plan created. The plan is being implemented with training our guaranteed curriculum planned for June and August.

Meet state Adequate Yearly Progress goals.

Seven of our buildings meet AYP in 2005-06, including South Middle School who made it for the second year in a row and was exited from School Improvement Status.

Lay the groundwork for a new alternative school.

A district committee researched and created a plan for the new school to open fall of 2007.

Implement a dual language program.

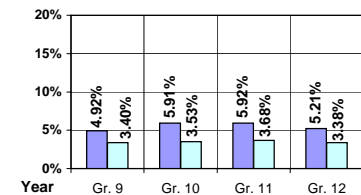
A district committee researched and created a plan for the new school to open fall of 2007 serving English and Spanish-speaking kindergarten students.

Student Profiles

Ethnicity

Race	Male	Female	Total
White	35.28%	32.53%	67.81%
Black	0.55%	0.55%	1.10%
Hispanic	15.04%	14.19%	29.23%
Nat. Amer.	0.22%	0.25%	0.47%
Asian/Pac	0.65%	0.74%	1.39%
Total	51.74%	48.26%	100.00%

Dropouts



Year	Gr. 9	Gr. 10	Gr. 11	Gr. 12
05-06	55	56	45	39
06-07	39	37	30	27

Financial Information 2006-07

	M & O Fund	%	All Funds	%
Revenues:				
Local Taxes	\$2,435,950	3.57%	\$12,856,257	10.61%
Other Sources	1,309,042	1.92%	29,662,745	24.47%
State	64,526,797	94.51%	68,025,904	56.12%
Federal	4,123	0.00%	10,674,670	8.80%
Total	\$68,275,912	100.00%	\$121,219,576	100.00%

Supplemental Information

Property and Agricultural Equipment Replacement Taxes.....	\$40,451
Lottery Revenues.....	\$574,525
Technology Grant.....	\$354,371

Expenditures:	Total	%	ADA	Rank
M & O Instruction	\$45,262,539	67.25%		
M & O Support Services	22,037,435	32.75%		
M & O Other	0	0.00%		
Total M & O	\$67,299,974	100.00%	\$5,149	122
Total All Funds	\$148,017,807	100.00%	\$11,324	39

Tax Levies 9-1-2006

	Total	Per ADA	Rank
Property Market Values	\$3,069,662,820	\$234,834	76
Total General M & O Levies	0.000702606		57
Total District Levies	0.004025446		34

Staff Data 2006-07

Personnel:	FTE	ADA To FTE	Teachers Salaries:	Rank
Elementary Teachers	403.36	20	Beginning Salary on Schedule	\$30,000
Secondary Teachers	312.47	17	Highest Salary on Schedule	\$51,104
Administrators	48.04	272	Average Elementary Teacher's Salary	\$38,601 109
Other Certified Staff	75.57	173	Average Secondary Teacher's Salary	\$41,176 87
Total Certified Staff	839.44	16	Average Superintendent's Salary	\$128,235 4
Total Non-Certified Staff	385.62	34		

Note: Rank represents how this district compares to the other public school districts in the State of Idaho; high to low (1 being the highest).



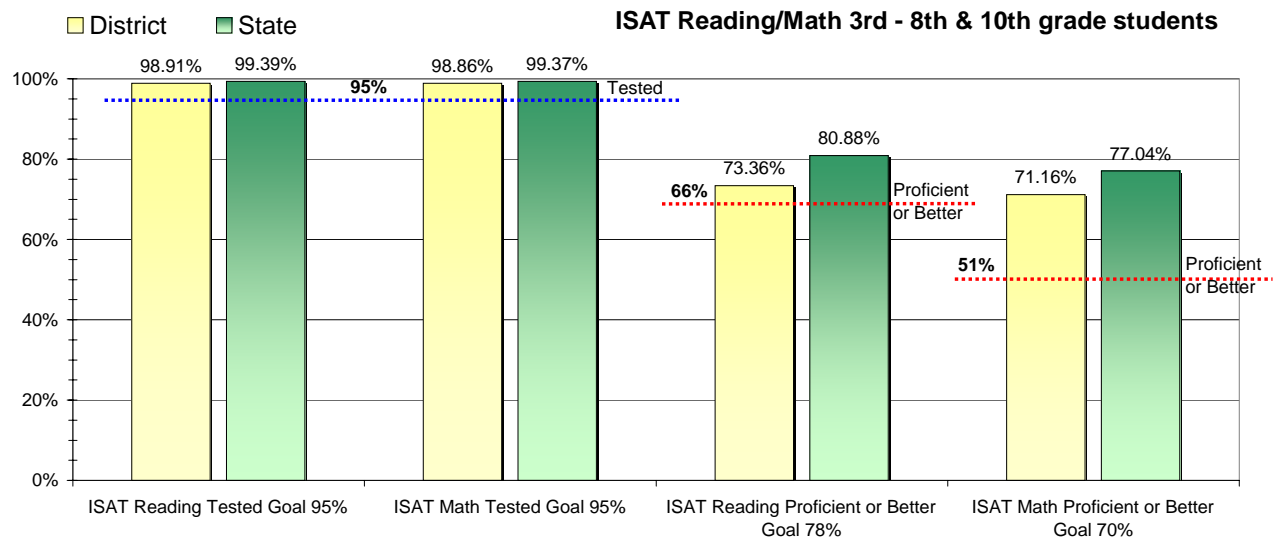
Adequate Yearly Progress and Assessment 2006-07

Did Nampa School District make Adequate yearly progress for 2006-07? No

Percent of the 41 targets that Nampa School District made: 70.73%

The goal in our nation is for all students in grades 3 through 8 and 10 to be proficient in reading and math by the spring of 2014. Idaho uses the Idaho Standards Achievement Test (ISAT) and the Idaho Alternate Assessment (IAA) to measure proficiency. This report shows the percentage of students who met state goals for proficiency in reading and math.

More Information is available at: <http://www.sde.state.id.us/AYP/Ayp07/default.asp>



To Protect the privacy of individual students the following symbols are used.

^ No participation determinations are made for groups of less than 10 students. The participation rate of students in this group is included in district and state totals.

~ No proficiency determinations are made for groups of less than 34 students. The proficiency level of students in this group is included in district and state totals

3rd Indicator - Graduation Rate		
2005	2006	Goal
80.32%	80.34%	Met