

Public School Districts

Caldwell District #132

Canyon County
 1101 Cleveland Blvd, Caldwell, ID 83605
 Phone: (208) 455-3300 Fax: (208) 455-3302
 Lonnie Barber, Superintendent

District Characteristics 2006-07			
Fall Enrollment	6,401	Special Education:	
Average Daily Attendance.....	6,116	Special Education Students.....	659
State Ranking Per ADA.....	9	Gifted and Talented Students.....	426
Number of Schools (sites):		Number of LEP Students**.....	1,191
Elementary.....	6	National School Lunch Program:	
Secondary.....	5	Average Daily Participation.....	4,279
Number of Accredited Schools:		Free and Reduced Meals.....	4,188
Approved.....	9	Lunch Price - Elementary.....	\$1.25
Approved with Merit.....	0	Lunch Price - Secondary.....	\$1.50
Approved with Comment.....	1	Pupil Transportation Program:	
Not Approved.....	0	Average Daily Ridership 2005-06	3,033
High School Diplomas Regular.....	263	Contracted Operation	
Other Completions*	0	* Certificates of Completion issued by the district	
Graduation Completion Rate...	74%	** Limited English Proficient (LEP)	

Highlights

No Data Submitted

Progress Towards Meeting Goals

2006-07 Goals

Progress

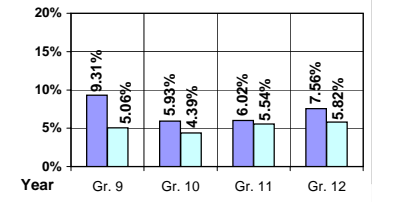
No Data Submitted

Student Profiles

Ethnicity

Race	Male	Female	Total
White	24.19%	22.29%	46.48%
Black	0.30%	0.37%	0.67%
Hispanic	26.04%	25.48%	51.52%
Nat. Amer.	0.31%	0.22%	0.53%
Asian/Pac	0.45%	0.35%	0.80%
Total	51.29%	48.71%	100.00%

Dropouts



Year	Gr. 9	Gr. 10	Gr. 11	Gr. 12
05-06	53	23	21	17
06-07	31	18	21	17

Financial Information 2006-07

	M & O Fund	%	All Funds	%
Revenues:				
Local Taxes	\$1,558,416	4.81%	\$4,533,111	9.98%
Other Sources	1,182,882	3.65%	2,292,939	5.05%
State	29,670,243	91.54%	31,291,371	68.86%
Federal	0	0.00%	7,327,054	16.11%
Total	\$32,411,541	100.00%	\$45,444,475	100.00%

Supplemental Information

Property and Agricultural Equipment Replacement Taxes.....	\$6,363
Lottery Revenues.....	\$267,131
Technology Grant.....	\$177,085

Expenditures:	Total	%	ADA	Rank
M & O Instruction	\$19,548,997	61.11%		
M & O Support Services	12,350,225	38.61%		
M & O Other	90,626	0.28%		
Total M & O	\$31,989,848	100.00%	\$5,231	119
Total All Funds	\$43,829,258	100.00%	\$7,167	123

Tax Levies 9-1-2006

	Total	Per ADA	Rank
Property Market Values	\$984,621,854	\$160,999	104
Total General M & O Levies	0.001456270		37
Total District Levies	0.004482812		24

Staff Data 2006-07

Personnel:	FTE	ADA To FTE	Teachers Salaries:	Rank
Elementary Teachers	196.64	18	Beginning Salary on Schedule	\$30,000
Secondary Teachers	144.33	18	Highest Salary on Schedule	\$52,878
Administrators	25.77	237	Average Elementary Teacher's Salary	\$37,707 115
Other Certified Staff	29.00	211	Average Secondary Teacher's Salary	\$41,445 82
Total Certified Staff	395.74	15	Average Superintendent's Salary	\$108,367 10
Total Non-Certified Staff	200.17	31		

Note: Rank represents how this district compares to the other public school districts in the State of Idaho; high to low (1 being the highest).



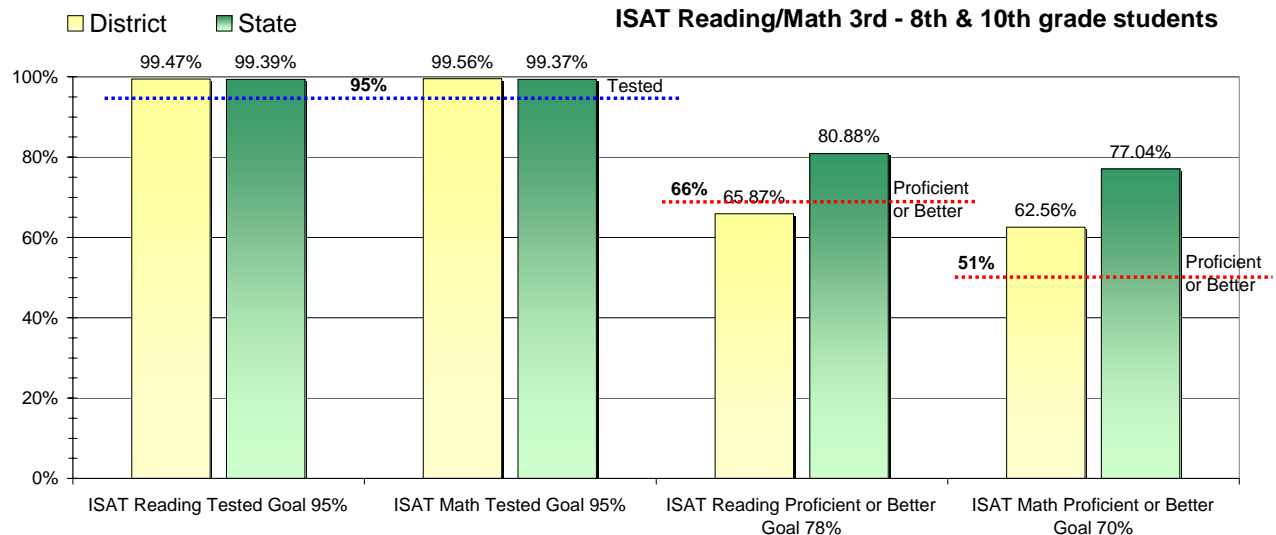
Adequate Yearly Progress and Assessment 2006-07

Did Caldwell District make Adequate yearly progress for 2006-07? No

Percent of the 41 targets that Caldwell District made: 70.73%

The goal in our nation is for all students in grades 3 through 8 and 10 to be proficient in reading and math by the spring of 2014. Idaho uses the Idaho Standards Achievement Test (ISAT) and the Idaho Alternate Assessment (IAA) to measure proficiency. This report shows the percentage of students who met state goals for proficiency in reading and math.

More Information is available at: <http://www.sde.state.id.us/AYP/Ayp07/default.asp>



To Protect the privacy of individual students the following symbols are used.

^No participation determinations are made for groups of less than 10 students. The participation rate of students in this group is included in district and state totals.

- No proficiency determinations are made for groups of less than 34 students. The proficiency level of students in this group is included in district and state totals

3rd Indicator - Graduation Rate		
2005	2006	Goal
77.23%	72.06%	Met