

Melba Jt District #136

Canyon County
 520 Broadway Ave, PO Box 185, Melba, ID 83641
 Phone: (208) 495-1141 Fax: (208) 495-1142
 Robert E. Larson, Superintendent

District Characteristics 2006-07

Fall Enrollment	756	Special Education:	
Average Daily Attendance.....	699	Special Education Students.....	76
State Ranking Per ADA.....	62	Gifted and Talented Students.....	0
Number of Schools (sites):		Number of LEP Students**.....	71
Elementary.....	1	National School Lunch Program:	
Secondary.....	2	Average Daily Participation.....	536
Number of Accredited Schools:		Free and Reduced Meals.....	278
Approved.....	2	Lunch Price - Elementary.....	\$1.00
Approved with Merit.....	0	Lunch Price - Secondary.....	\$1.25
Approved with Comment.....	1	Pupil Transportation Program:	
Not Approved.....	0	Average Daily Ridership 2005-06	319
High School Diplomas Regular.....	53	District Owned Operation	
Other Completions*	0	* Certificates of Completion issued by the district	
Graduation Completion Rate...	92%	** Limited English Proficient (LEP)	

Highlights

During the course of every school year many wonderful things take place that are worthy of highlighting. We see students who excel in the classroom or the athletic field. Several of our athletic teams made it to state competition and the softball team was crowned as State Champions. The elementary and middle schools have been very successful in implementing Response to Intervention in their buildings. There have been many positive outcomes since the implementation of RTI. Mr. Davis a longtime coach, teacher and administrator in the Melba School District retired. He has had a strong and positive influence in Melba Schools for nearly 3 decades. His leadership and passion for student achievement will be missed.

Progress Towards Meeting Goals

2006-07 Goals

Progress

To focus on early intervention for students who are not reading at or near grade level as measured by the Idaho Reading Indicator (IRI).

The intervention strategies for the kindergarten and first grade students continue to be quite successful. We will continue to monitor our progress using the newest version of the IRI.

The district did not make Adequate Yearly Progress (AYP) in seven areas. It is our goal to make in all areas.

Even though we are seeing growth in all areas the district did not meet AYP in eight areas.

Character education is important to our school and community. All schools will provide programs which promote strong character education, such as the Theme of the Month.

The number of discipline referrals continues to drop in all schools. Each school is including the Theme of the Month in their day curriculum.

To maintain the high graduation rate of previous years by implementing a strong intervention program for students who may need to use the Alternative Graduation Route.

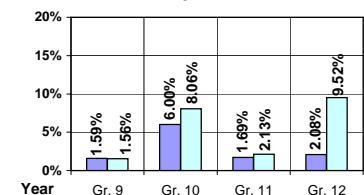
The District has implemented several strategies including remediation programs at all levels, 3 tier curriculum for math, language arts and reading, promotion requirements for middle grades, attendance requirements, etc. as an effort to improve graduation rate.

Student Profiles

Ethnicity

Race	Male	Female	Total
White	43.41%	39.68%	83.09%
Black	0.00%	0.13%	0.13%
Hispanic	8.99%	7.01%	16.00%
Nat. Amer.	0.13%	0.13%	0.26%
Asian/Pac	0.26%	0.26%	0.52%
Total	52.79%	47.21%	100.00%

Dropouts



Year	Gr. 9	Gr. 10	Gr. 11	Gr. 12
05-06	1	3	1	1
06-07	1	5	1	6

Financial Information 2006-07

	M & O Fund	%	All Funds	%
Revenues:				
Local Taxes	\$304,295	7.03%	\$955,426	16.32%
Other Sources	77,428	1.79%	257,735	4.40%
State	3,945,151	91.18%	4,140,443	70.71%
Federal	0	0.00%	501,881	8.57%
Total	\$4,326,874	100.00%	\$5,855,485	100.00%

Supplemental Information

Property and Agricultural Equipment Replacement Taxes.....	\$52,354
Lottery Revenues.....	\$30,201
Technology Grant.....	\$40,114

Expenditures:	Total	%	ADA	Rank
M & O Instruction	\$2,531,661	59.68%		
M & O Support Services	1,705,415	40.20%		
M & O Other	4,906	0.12%		
Total M & O	\$4,241,982	100.00%	\$6,065	83
Total All Funds	\$5,453,450	100.00%	\$7,798	98

Tax Levies 9-1-2006	Total	Per ADA	Rank
Property Market Values	\$169,461,644	\$242,306	74
Total General M & O Levies	0.001559550		36
Total District Levies	0.005410445		11

Staff Data 2006-07

Personnel:	FTE	ADA To FTE	Teachers Salaries:	Rank
Elementary Teachers	19.49	19	Beginning Salary on Schedule	\$30,000
Secondary Teachers	24.33	16	Highest Salary on Schedule	\$49,787
Administrators	4.55	154	Average Elementary Teacher's Salary	\$37,664 116
Other Certified Staff	2.32	301	Average Secondary Teacher's Salary	\$40,466 97
Total Certified Staff	50.69	14	Average Superintendent's Salary	\$83,430 54
Total Non-Certified Staff	29.91	23		

Note: Rank represents how this district compares to the other public school districts in the State of Idaho; high to low (1 being the highest).



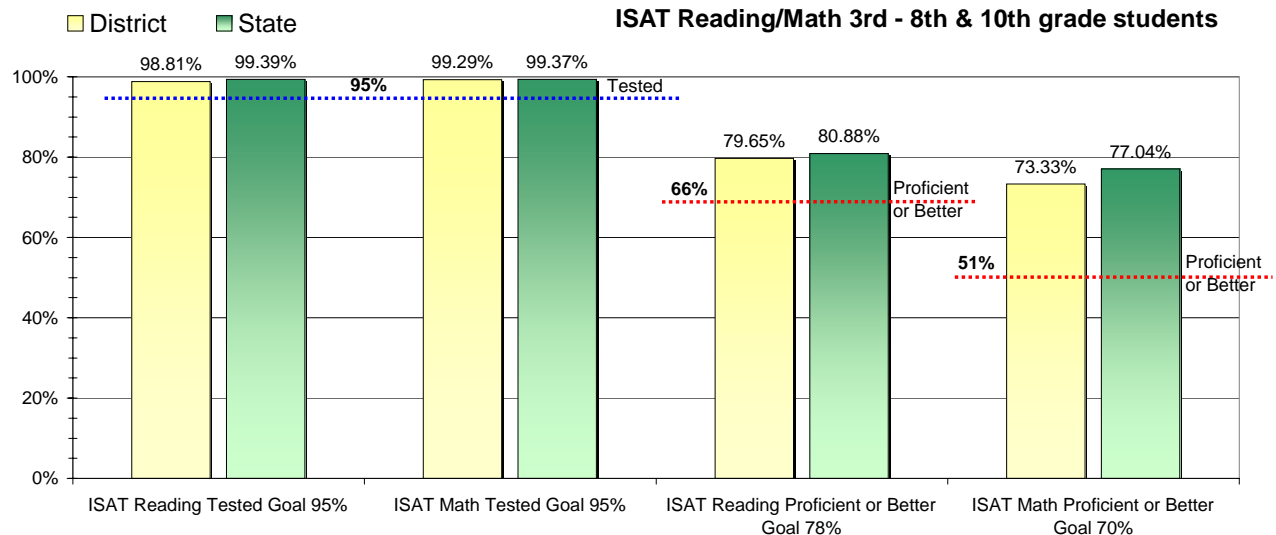
Adequate Yearly Progress and Assessment 2006-07

Did Melba Jt District make Adequate yearly progress for 2006-07? No

Percent of the 41 targets that Melba Jt District made: 80.49%

The goal in our nation is for all students in grades 3 through 8 and 10 to be proficient in reading and math by the spring of 2014. Idaho uses the Idaho Standards Achievement Test (ISAT) and the Idaho Alternate Assessment (IAA) to measure proficiency. This report shows the percentage of students who met state goals for proficiency in reading and math.

More Information is available at: <http://www.sde.state.id.us/AYP/Ayp07/default.asp>



To Protect the privacy of individual students the following symbols are used.

^No participation determinations are made for groups of less than 10 students. The participation rate of students in this group is included in district and state totals.

~ No proficiency determinations are made for groups of less than 34 students. The proficiency level of students in this group is included in district and state totals

3rd Indicator - Graduation Rate		
2005	2006	Goal
95.31%	91.3%	Met