

Parma District #137

Canyon County
 805 E McConnell, Parma, ID 83660
 Phone: (208) 722-5115 Fax: (208) 722-7937
 Jim Norton, Superintendent

District Characteristics 2006-07			
Fall Enrollment	1,082	Special Education:	
Average Daily Attendance.....	1,015	Special Education Students.....	129
State Ranking Per ADA.....	53	Gifted and Talented Students.....	48
Number of Schools (sites):		Number of LEP Students**.....	166
Elementary.....	1	National School Lunch Program:	
Secondary.....	2	Average Daily Participation.....	817
Number of Accredited Schools:		Free and Reduced Meals.....	541
Approved.....	3	Lunch Price - Elementary.....	\$1.25
Approved with Merit.....	0	Lunch Price - Secondary.....	\$1.50
Approved with Comment.....	0	Pupil Transportation Program:	
Not Approved.....	0	Average Daily Ridership 2005-06	443
High School Diplomas Regular.....	62	District Owned Operation	
Other Completions*	0	* Certificates of Completion issued by the district	
Graduation Completion Rate...	93%	** Limited English Proficient (LEP)	

Highlights

No Data Submitted

Progress Towards Meeting Goals

2006-07 Goals

Progress

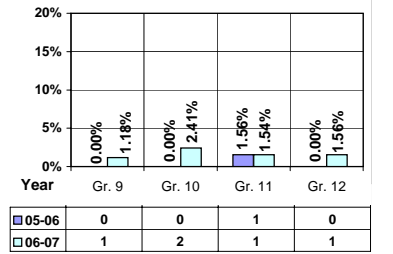
No Data Submitted

Student Profiles

Ethnicity

Race	Male	Female	Total
White	34.30%	36.78%	71.08%
Black	0.28%	0.00%	0.28%
Hispanic	13.49%	13.03%	26.52%
Nat. Amer.	0.74%	0.55%	1.29%
Asian/Pac	0.46%	0.37%	0.83%
Total	49.27%	50.73%	100.00%

Dropouts



Financial Information 2006-07

	M & O Fund	%	All Funds	%
Revenues:				
Local Taxes	\$478,842	7.60%	\$1,206,303	14.06%
Other Sources	141,617	2.25%	265,306	3.09%
State	5,681,199	90.15%	6,049,668	70.51%
Federal	0	0.00%	1,058,471	12.34%
Total	\$6,301,658	100.00%	\$8,579,748	100.00%

Supplemental Information

Property and Agricultural Equipment Replacement Taxes.....	\$54,264
Lottery Revenues.....	\$46,074
Technology Grant.....	\$47,954

Expenditures:	Total	%	ADA	Rank
M & O Instruction	\$3,842,625	62.41%		
M & O Support Services	2,297,064	37.31%		
M & O Other	17,095	0.28%		
Total M & O	\$6,156,784	100.00%	\$6,063	84
Total All Funds	\$8,885,195	100.00%	\$8,750	76

Tax Levies 9-1-2006	Total	Per ADA	Rank
Property Market Values	\$189,560,342	\$186,674	100
Total General M & O Levies	0.002387103		20
Total District Levies	0.006360181		4

Staff Data 2006-07

Personnel:	FTE	ADA To FTE	Teachers Salaries:	Rank
Elementary Teachers	34.88	17	Beginning Salary on Schedule	\$30,000
Secondary Teachers	29.33	16	Highest Salary on Schedule	\$49,916
Administrators	5.86	173	Average Elementary Teacher's Salary	\$39,694 92
Other Certified Staff	5.55	183	Average Secondary Teacher's Salary	\$39,841 107
Total Certified Staff	75.62	13	Average Superintendent's Salary	\$93,995 29
Total Non-Certified Staff	52.50	19		

Note: Rank represents how this district compares to the other public school districts in the State of Idaho; high to low (1 being the highest).



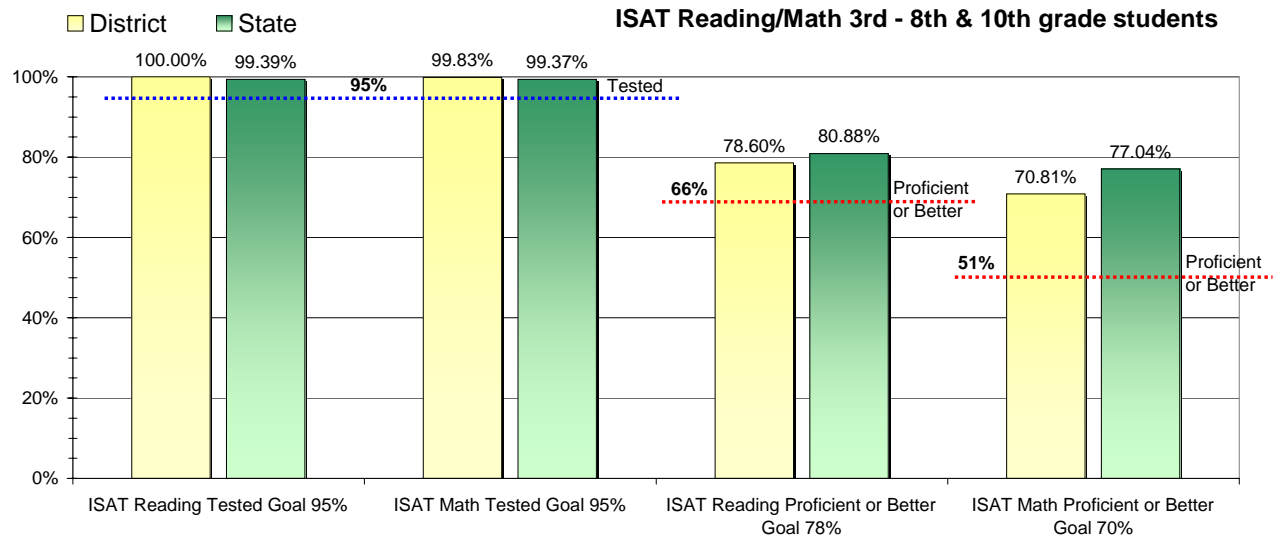
Adequate Yearly Progress and Assessment 2006-07

Did Parma District make Adequate yearly progress for 2006-07? No

Percent of the 41 targets that Parma District made: 80.49%

The goal in our nation is for all students in grades 3 through 8 and 10 to be proficient in reading and math by the spring of 2014. Idaho uses the Idaho Standards Achievement Test (ISAT) and the Idaho Alternate Assessment (IAA) to measure proficiency. This report shows the percentage of students who met state goals for proficiency in reading and math.

More Information is available at: <http://www.sde.state.id.us/AYP/Ayp07/default.asp>



To Protect the privacy of individual students the following symbols are used.

^No participation determinations are made for groups of less than 10 students. The participation rate of students in this group is included in district and state totals.

- No proficiency determinations are made for groups of less than 34 students. The proficiency level of students in this group is included in district and state totals

3rd Indicator - Graduation Rate		
2005	2006	Goal
88.24%	95.24%	Met