

Vallivue School District #139

Canyon County
 5207 S Montana Ave, Caldwell, ID 83607
 Phone: (208) 454-0445 Fax: (208) 454-0293
 George Grant, Superintendent

District Characteristics 2006-07

Fall Enrollment	5,904	Special Education:	
Average Daily Attendance.....	5,530	Special Education Students.....	627
State Ranking Per ADA.....	10	Gifted and Talented Students.....	102
Number of Schools (sites):		Number of LEP Students**.....	714
Elementary.....	4	National School Lunch Program:	
Secondary.....	4	Average Daily Participation.....	4,270
Number of Accredited Schools:		Free and Reduced Meals.....	2,923
Approved.....	7	Lunch Price - Elementary.....	\$1.25
Approved with Merit.....	0	Lunch Price - Secondary.....	\$1.60
Approved with Comment.....	0	Pupil Transportation Program:	
Not Approved.....	0	Average Daily Ridership 2005-06	3,007
High School Diplomas Regular.....	260	Contracted Operation	
Other Completions*	6	* Certificates of Completion issued by the district	
Graduation Completion Rate...	72%	** Limited English Proficient (LEP)	

Highlights

The Vallivue School District implemented SRB math curriculum, Tier 2 & 3 programs, pacing calendars, and common assessments. To increase graduation rate, the District implemented an alternative night school program. Professional development included program consultants, additional instructional coaches, mentoring learning teams, and restructured collaboration. Technologically, the District increased bandwidth capabilities, redesigned the web-site, and added smart boards, projectors and graphing calculators.

Construction of a new elementary and additions to the High School and Sage Valley plus the passage of an additional bond for a future elementary will provide much needed educational space to accommodate our expansive growth.

Progress Towards Meeting Goals

2006-07 Goals

Progress

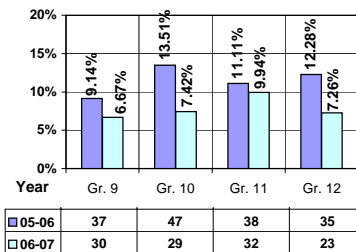
Increase student academic performance as measured by state and district assessments.	SRB math curriculum; pacing calendars, common assessments; DMA/DWA improved
Increase graduation rate and decrease dropout rate.	Alternative night school; 3-Tier programs in reading and math at all grade levels
Increase the number of highly effective and qualified personnel.	Restructured collaboration; quality consultants; instructional coaches; mentoring; recruiting
Increase parent/family partnerships that support the education of all students.	Added Migrant family liaison; schools continue to sponsor family academic events
Integrate a technologically-enhanced environment and support system that promotes student learning and efficiency and effectiveness of district operations.	District band-width capabilities increased by 3 megabit to 70 megabit; District web-site was redesigned and updated; provided smart boards, projectors, and graphing calculators
Ensure the effective use of resources in all district operations.	Resources are aligned to areas of greatest need to support student learning
Enhance current facilities, while effectively planning for future needs based on growth, educational programs, and services.	Construction completed at the HS and SV; a new elementary school was constructed and a bond was passed to construct a new elementary school
Provide a transportation program that is safe, timely, child-centered, and dependable for an ever-increasing student population.	The district continues to work closely with our transportation provider to assure safe and cost-effective transportation
Ensure K-12 students receive nutrition, physical, and wellness education that provides them with the knowledge and skills needed to adopt healthy lifestyles.	Attention to wellness was increased by a comprehensive plan; HS physical education classes include extended time at the local YMCA for life time fitness activities

Student Profiles

Ethnicity

Race	Male	Female	Total
White	35.14%	33.01%	68.15%
Black	0.47%	0.39%	0.86%
Hispanic	14.55%	14.31%	28.86%
Nat. Amer.	0.39%	0.27%	0.66%
Asian/Pac	0.79%	0.68%	1.47%
Total	51.34%	48.66%	100.00%

Dropouts



Financial Information 2006-07

	M & O Fund	%	All Funds	%
Revenues:				
Local Taxes	\$2,822,647	9.25%	\$8,076,759	15.84%
Other Sources	688,817	2.26%	11,017,908	21.61%
State	26,993,479	88.49%	27,558,384	54.06%
Federal	0	0.00%	4,322,065	8.49%
Total	\$30,504,943	100.00%	\$50,975,116	100.00%

Supplemental Information

Property and Agricultural Equipment Replacement Taxes.....	\$84,631
Lottery Revenues.....	\$223,873
Technology Grant.....	\$157,111

Expenditures:	Total	%	ADA	Rank
M & O Instruction	\$18,172,977	61.32%		
M & O Support Services	11,405,698	38.48%		
M & O Other	58,096	0.20%		
Total M & O	\$29,636,771	100.00%	\$5,359	115
Total All Funds	\$59,282,451	100.00%	\$10,720	46

Tax Levies 9-1-2006

	Total	Per ADA	Rank
Property Market Values	\$1,453,363,325	\$262,801	68
Total General M & O Levies	0.001748052		31
Total District Levies	0.005255854		14

Staff Data 2006-07

Personnel:	FTE	ADA To FTE	Teachers Salaries:	Rank
Elementary Teachers	177.33	20	Beginning Salary on Schedule	\$30,000
Secondary Teachers	117.24	19	Highest Salary on Schedule	\$55,183
Administrators	19.20	288	Average Elementary Teacher's Salary	\$39,968 86
Other Certified Staff	24.73	224	Average Secondary Teacher's Salary	\$42,303 71
Total Certified Staff	338.50	16	Average Superintendent's Salary	\$109,480 9
Total Non-Certified Staff	150.03	37		

Note: Rank represents how this district compares to the other public school districts in the State of Idaho; high to low (1 being the highest).



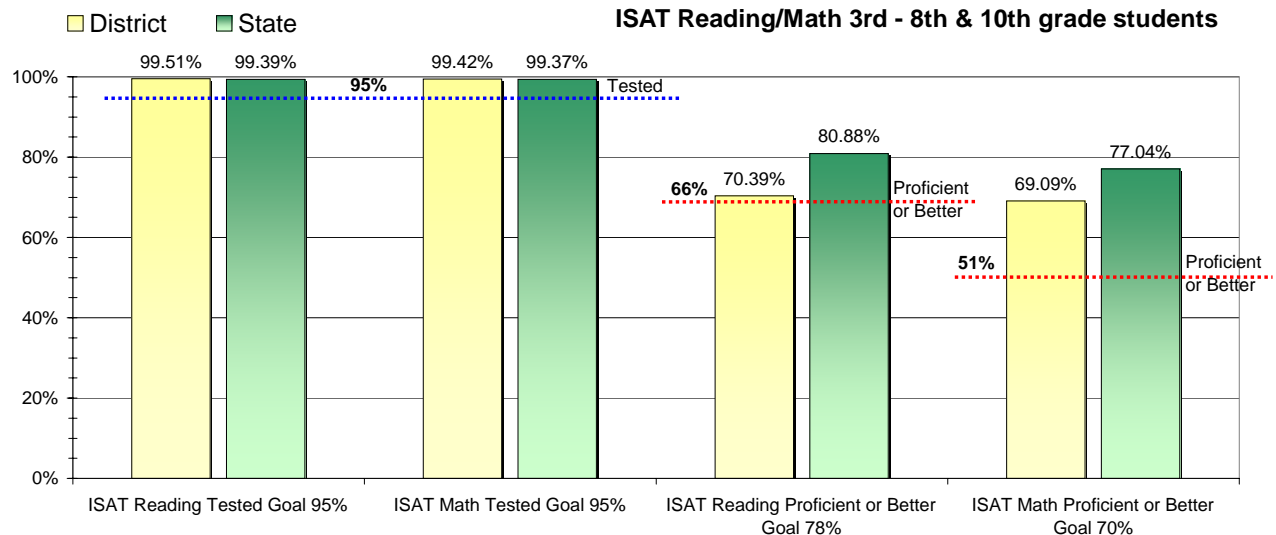
Adequate Yearly Progress and Assessment 2006-07

Did Vallivue School District make Adequate yearly progress for 2006-07? No

Percent of the 41 targets that Vallivue School District made: 68.29%

The goal in our nation is for all students in grades 3 through 8 and 10 to be proficient in reading and math by the spring of 2014. Idaho uses the Idaho Standards Achievement Test (ISAT) and the Idaho Alternate Assessment (IAA) to measure proficiency. This report shows the percentage of students who met state goals for proficiency in reading and math.

More Information is available at: <http://www.sde.state.id.us/AYP/Ayp07/default.asp>



To Protect the privacy of individual students the following symbols are used.

^No participation determinations are made for groups of less than 10 students. The participation rate of students in this group is included in district and state totals.

~ No proficiency determinations are made for groups of less than 34 students. The proficiency level of students in this group is included in district and state totals

3rd Indicator - Graduation Rate

2005	2006	Goal
72.33%	68.86%	Met