

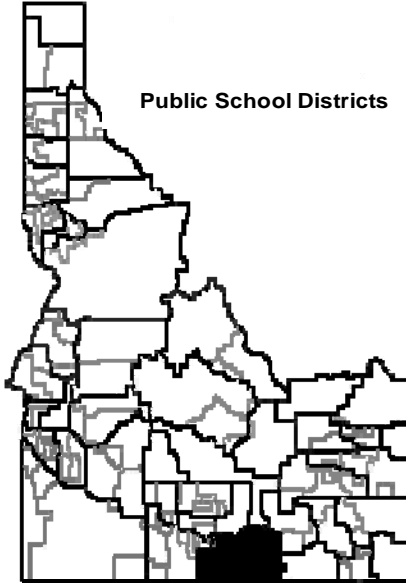
# Cassia County Jt District #151

Cassia County

237 E 19th St, Burley, ID 83318

Phone: (208) 878-6600 Fax: (208) 878-4231

Dr. Michael V. Chesley, Superintendent



Public School Districts

## District Characteristics 2006-07

Fall Enrollment .....	5,059	Special Education:	
Average Daily Attendance.....	4,762	Special Education Students.....	467
State Ranking Per ADA.....	12	Gifted and Talented Students.....	99
Number of Schools (sites):		Number of LEP Students**.....	756
Elementary.....	9	National School Lunch Program:	
Secondary.....	8	Average Daily Participation.....	3,189
Number of Accredited Schools:		Free and Reduced Meals.....	2,556
Approved.....	16	Lunch Price - Elementary.....	\$1.35
Approved with Merit.....	0	Lunch Price - Secondary.....	\$1.50
Approved with Comment.....	0	Pupil Transportation Program:	
Not Approved.....	0	Average Daily Ridership 2005-06	2,062
High School Diplomas Regular.....	288	District Owned Operation	
Other Completions* .....	1	* Certificates of Completion issued by the district	
Graduation Completion Rate...	89%	** Limited English Proficient (LEP)	

## Highlights

No Data Submitted

## Progress Towards Meeting Goals

### 2006-07 Goals

### Progress

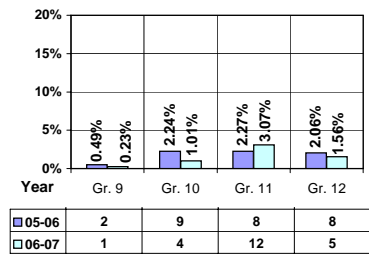
No Data Submitted

## Student Profiles

### Ethnicity

Race	Male	Female	Total
White	36.82%	33.58%	70.40%
Black	0.06%	0.16%	0.22%
Hispanic	14.31%	13.28%	27.59%
Nat. Amer.	0.61%	0.38%	0.99%
Asian/Pac	0.44%	0.36%	0.80%
Total	52.24%	47.76%	100.00%

## Dropouts



### Financial Information 2006-07

	M & O Fund	%	All Funds	%
<b>Revenues:</b>				
Local Taxes	\$812,484	2.97%	\$3,353,384	9.40%
Other Sources	922,155	3.37%	1,409,949	3.95%
State	25,615,959	93.60%	26,353,003	73.86%
Federal	15,690	0.06%	4,563,007	12.79%
<b>Total</b>	<b>\$27,366,288</b>	<b>100.00%</b>	<b>\$35,679,343</b>	<b>100.00%</b>

#### Supplemental Information

Property and Agricultural Equipment Replacement Taxes.....	\$214,052
Lottery Revenues.....	\$221,275
Technology Grant.....	\$150,350

Expenditures:	Total	%	ADA	Rank
M & O Instruction	\$17,441,590	63.81%		
M & O Support Services	9,834,063	35.98%		
M & O Other	58,793	0.21%		
<b>Total M &amp; O</b>	<b>\$27,334,446</b>	<b>100.00%</b>	<b>\$5,740</b>	<b>100</b>
<b>Total All Funds</b>	<b>\$35,278,713</b>	<b>100.00%</b>	<b>\$7,408</b>	<b>112</b>

#### Tax Levies 9-1-2006

	Total	Per ADA	Rank
Property Market Values	\$875,150,074	\$183,768	101
Total General M & O Levies	0.000733746		56
Total District Levies	0.003583297		41

### Staff Data 2006-07

Personnel:	FTE	ADA To FTE	Teachers Salaries:	Rank
Elementary Teachers	136.53	20	Beginning Salary on Schedule	\$30,000
Secondary Teachers	152.05	15	Highest Salary on Schedule	\$49,896
Administrators	24.97	191	Average Elementary Teacher's Salary	\$40,506 74
Other Certified Staff	19.76	241	Average Secondary Teacher's Salary	\$42,740 67
Total Certified Staff	333.31	14	Average Superintendent's Salary	\$93,440 34
Total Non-Certified Staff	207.52	23		

Note: Rank represents how this district compares to the other public school districts in the State of Idaho; high to low (1 being the highest).



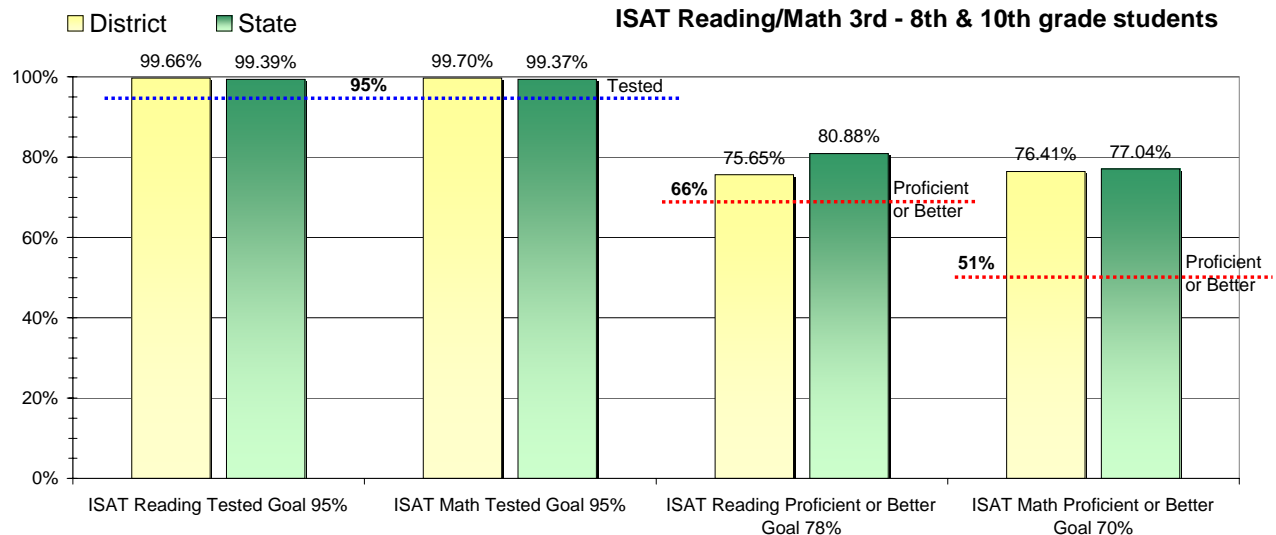
### Adequate Yearly Progress and Assessment 2006-07

Did Cassia County Jt District make Adequate yearly progress for 2006-07? No

Percent of the 41 targets that Cassia County Jt District made: 78.05%

The goal in our nation is for all students in grades 3 through 8 and 10 to be proficient in reading and math by the spring of 2014. Idaho uses the Idaho Standards Achievement Test (ISAT) and the Idaho Alternate Assessment (IAA) to measure proficiency. This report shows the percentage of students who met state goals for proficiency in reading and math.

More Information is available at: <http://www.sde.state.id.us/AYP/Ayp07/default.asp>



To Protect the privacy of individual students the following symbols are used.

^ No participation determinations are made for groups of less than 10 students. The participation rate of students in this group is included in district and state totals.

~ No proficiency determinations are made for groups of less than 34 students. The proficiency level of students in this group is included in district and state totals

3rd Indicator - Graduation Rate		
2005	2006	Goal
87.81%	90.55%	Met