

# Orofino Jt District #171

Clearwater County  
 1051 Michigan, PO Box 2259, Orofino, ID 83544  
 Phone: (208) 476-5593 Fax: (208) 476-7293  
 Dale Durkee, Superintendent

## District Characteristics 2006-07

Fall Enrollment .....	1,303	Special Education:	
Average Daily Attendance.....	1,220	Special Education Students.....	150
State Ranking Per ADA.....	46	Gifted and Talented Students.....	44
Number of Schools (sites):		Number of LEP Students**.....	1
Elementary.....	5	National School Lunch Program:	
Secondary.....	3	Average Daily Participation.....	852
Number of Accredited Schools:		Free and Reduced Meals.....	667
Approved.....	8	Lunch Price - Elementary.....	\$1.50
Approved with Merit.....	0	Lunch Price - Secondary.....	\$1.75
Approved with Comment.....	0	Pupil Transportation Program:	
Not Approved.....	0	Average Daily Ridership 2005-06	645
High School Diplomas Regular.....	105	District Owned Operation	
Other Completions* .....	2		
Graduation Completion Rate...	94%	* Certificates of Completion issued by the district	
		** Limited English Proficient (LEP)	

## Highlights

No Data Submitted

## Progress Towards Meeting Goals

### 2006-07 Goals

### Progress

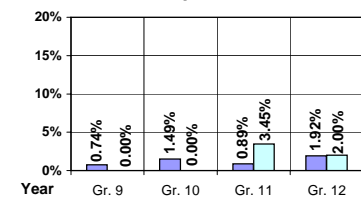
No Data Submitted

## Student Profiles

### Ethnicity

Race	Male	Female	Total
White	50.91%	39.98%	90.89%
Black	0.15%	0.15%	0.30%
Hispanic	1.38%	1.69%	3.07%
Nat. Amer.	1.84%	1.53%	3.37%
Asian/Pac	0.92%	1.45%	2.37%
<b>Total</b>	<b>55.20%</b>	<b>44.80%</b>	<b>100.00%</b>

## Dropouts



Year	Gr. 9	Gr. 10	Gr. 11	Gr. 12
05-06	1	2	1	2
06-07	0	0	4	2

### Financial Information 2006-07

	M & O Fund	%	All Funds	%
<b>Revenues:</b>				
Local Taxes	\$1,400,872	15.02%	\$1,400,872	12.14%
Other Sources	239,071	2.56%	507,382	4.40%
State	7,684,102	82.40%	7,959,434	68.98%
Federal	1,540	0.02%	1,670,449	14.48%
<b>Total</b>	<b>\$9,325,585</b>	<b>100.00%</b>	<b>\$11,538,137</b>	<b>100.00%</b>

#### Supplemental Information

Property and Agricultural Equipment Replacement Taxes.....	\$16,253
Lottery Revenues.....	\$57,969
Technology Grant.....	\$57,828

Expenditures:	Total	%	ADA	Rank
M & O Instruction	\$5,631,574	62.31%		
M & O Support Services	3,394,733	37.56%		
M & O Other	11,163	0.13%		
<b>Total M &amp; O</b>	<b>\$9,037,470</b>	<b>100.00%</b>	<b>\$7,406</b>	<b>50</b>
<b>Total All Funds</b>	<b>\$11,139,472</b>	<b>100.00%</b>	<b>\$9,128</b>	<b>64</b>

#### Tax Levies 9-1-2006

	Total	Per ADA	Rank
Property Market Values	\$478,398,812	\$392,031	48
Total General M & O Levies	0.002774459		17
Total District Levies	0.002774459		58

### Staff Data 2006-07

Personnel:	FTE	ADA To FTE	Teachers Salaries:	Rank
Elementary Teachers	38.10	16	Beginning Salary on Schedule	\$30,000
Secondary Teachers	49.34	14	Highest Salary on Schedule	\$48,920
Administrators	6.65	184	Average Elementary Teacher's Salary	\$41,560 64
Other Certified Staff	4.90	249	Average Secondary Teacher's Salary	\$43,968 49
Total Certified Staff	98.99	12	Average Superintendent's Salary	\$77,719 78
Total Non-Certified Staff	65.83	19		

Note: Rank represents how this district compares to the other public school districts in the State of Idaho; high to low (1 being the highest).



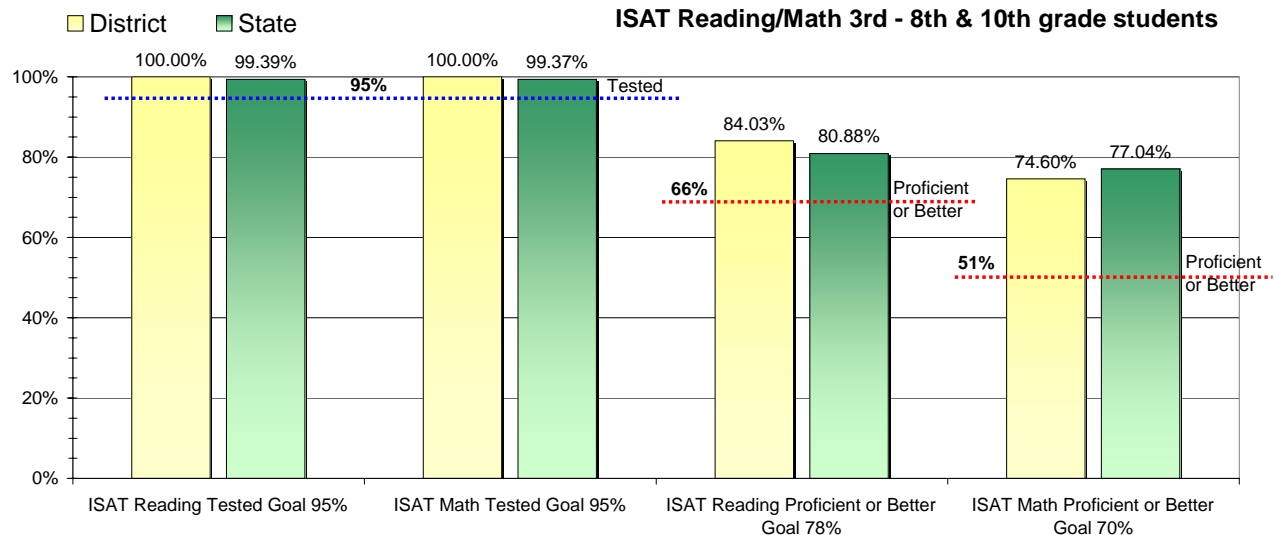
### Adequate Yearly Progress and Assessment 2006-07

Did Orofino Jt District make Adequate yearly progress for 2006-07? No

Percent of the 41 targets that Orofino Jt District made: 92.68%

The goal in our nation is for all students in grades 3 through 8 and 10 to be proficient in reading and math by the spring of 2014. Idaho uses the Idaho Standards Achievement Test (ISAT) and the Idaho Alternate Assessment (IAA) to measure proficiency. This report shows the percentage of students who met state goals for proficiency in reading and math.

More Information is available at: <http://www.sde.state.id.us/AYP/Ayp07/default.asp>



To Protect the privacy of individual students the following symbols are used.

^ No participation determinations are made for groups of less than 10 students. The participation rate of students in this group is included in district and state totals.

~ No proficiency determinations are made for groups of less than 34 students. The proficiency level of students in this group is included in district and state totals

#### 3rd Indicator - Graduation Rate

2005	2006	Goal
87.38%	90.91%	Met