

Glens Ferry Jt District #192

Elmore County

800 Old Highway 30, Glens Ferry, ID 83623

Phone: (208) 366-7436 Fax: (208) 366-7455

Wayne L. Rush, Superintendent

District Characteristics 2006-07

Fall Enrollment	510	Special Education:	
Average Daily Attendance.....	476	Special Education Students.....	71
State Ranking Per ADA.....	72	Gifted and Talented Students.....	19
Number of Schools (sites):		Number of LEP Students**.....	165
Elementary.....	1	National School Lunch Program:	
Secondary.....	2	Average Daily Participation.....	410
Number of Accredited Schools:		Free and Reduced Meals.....	331
Approved.....	3	Lunch Price - Elementary.....	\$1.50
Approved with Merit.....	0	Lunch Price - Secondary.....	\$1.75
Approved with Comment.....	0	Pupil Transportation Program:	
Not Approved.....	0	Average Daily Ridership 2005-06	291
High School Diplomas Regular.....	48	District Owned Operation	
Other Completions*	0	* Certificates of Completion issued by the district	
Graduation Completion Rate...	91%	** Limited English Proficient (LEP)	

Highlights

Glens Ferry School District continues to focus on Improving Teaching and Learning through our five initiatives. These are: High Schools That Work; Making Middle Grades Work; Reading First; Sheltered Instruction Observation Protocol (SIOP); and Improving Teaching and Learning through Technology.

Through these initiatives we are focusing on the success of each student. We have established a uniform model of professional development that utilizes Teacher Leaders in each school.

With a strong focus on continual improvement we will reach our goal of being a school that over 90% of all our students will score proficient or above on state tests.

Progress Towards Meeting Goals

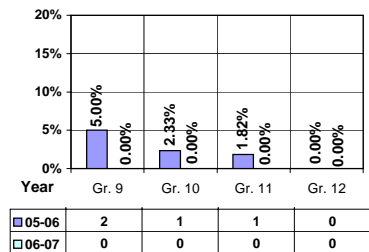
2006-07 Goals	Progress
Elementary School to Become a Reading First School	Grant awarded Spring 2007
Adopt Houghton Mifflin Reading Program for K - 5 grades	Purchased program in May 2007
Middle School to Adopt Making Middle Grades Work as the Reform Model	Joined project in January 2007 – staff training summer 2007
Train all Staff in Sheltered Instruction Observation Protocol (SIOP)	Provided 5 training sessions during 2006 -2007
Continued Implementation of High Schools That Work	On-going implementation
Improve the Technology Infrastructure in the Schools	Re-wired the schools and installed new servers. Connected to the internet through fiber.
Establish Coaching Model for Professional Development	Selected 10 teachers for SIOP and Technology Teacher Leaders
Improve Test Scores and Reach Adequate Yearly Progress (AYP) in Each Schools	Continued worked to work on improving student achievement

Student Profiles

Ethnicity

Race	Male	Female	Total
White	27.64%	23.73%	51.37%
Black	0.20%	0.20%	0.40%
Hispanic	21.96%	24.12%	46.08%
Nat. Amer.	0.78%	0.78%	1.56%
Asian/Pac	0.39%	0.20%	0.59%
Total	50.97%	49.03%	100.00%

Dropouts



Financial Information 2006-07

	M & O Fund	%	All Funds	%
Revenues:				
Local Taxes	\$91,598	2.56%	\$331,466	6.86%
Other Sources	288,095	8.06%	357,275	7.40%
State	3,164,574	88.51%	3,345,400	69.25%
Federal	31,200	0.87%	796,976	16.49%
Total	\$3,575,467	100.00%	\$4,831,117	100.00%

Supplemental Information

Property and Agricultural Equipment Replacement Taxes.....	\$44,779
Lottery Revenues.....	\$22,879
Technology Grant.....	\$34,964

	Total	%	ADA	Rank
Expenditures:				
M & O Instruction	\$2,090,768	63.61%		
M & O Support Services	1,190,500	36.22%		
M & O Other	5,699	0.17%		
Total M & O	\$3,286,967	100.00%	\$6,900	60
Total All Funds	\$4,668,790	100.00%	\$9,801	53

	Total	Per ADA	Rank
Tax Levies 9-1-2006			
Property Market Values	\$190,338,190	\$399,568	45
Total General M & O Levies	0.000130877		81
Total District Levies	0.001357935		96

Staff Data 2006-07

Personnel:	FTE	ADA To FTE	Teachers Salaries:	Rank
Elementary Teachers	15.77	17	Beginning Salary on Schedule	\$30,000
Secondary Teachers	20.63	13	Highest Salary on Schedule	\$47,869
Administrators	3.00	159	Average Elementary Teacher's Salary	\$42,802 47
Other Certified Staff	1.20	397	Average Secondary Teacher's Salary	\$39,502 112
Total Certified Staff	40.60	12	Average Superintendent's Salary	\$70,000 101
Total Non-Certified Staff	28.83	17		

Note: Rank represents how this district compares to the other public school districts in the State of Idaho; high to low (1 being the highest).



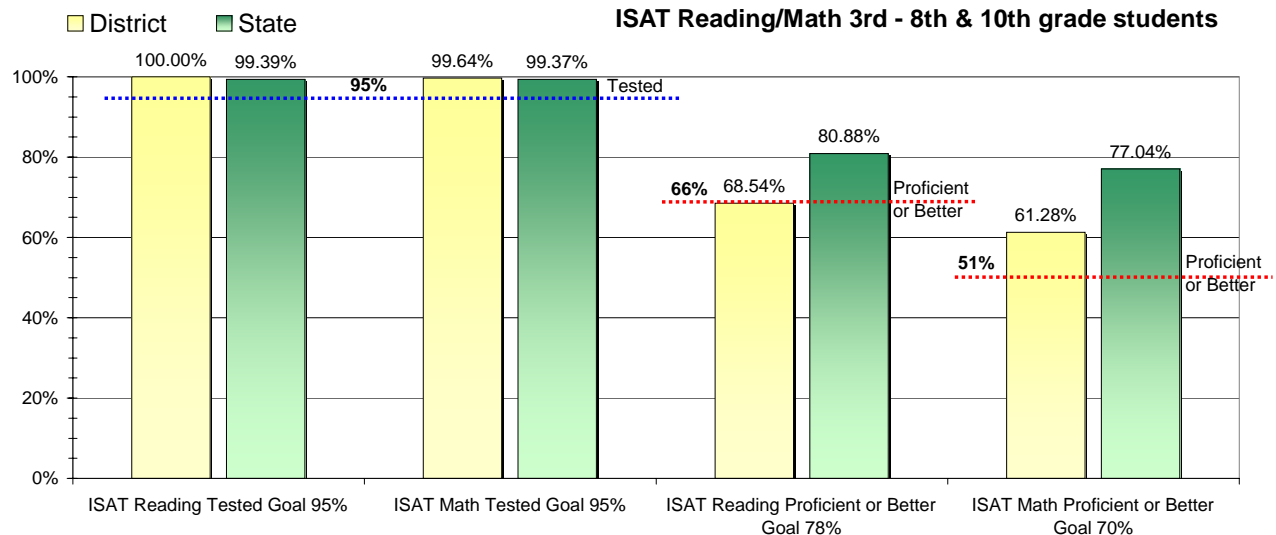
Adequate Yearly Progress and Assessment 2006-07

Did Glens Ferry Jt District make Adequate yearly progress for 2006-07? No

Percent of the 41 targets that Glens Ferry Jt District made: 75.61%

The goal in our nation is for all students in grades 3 through 8 and 10 to be proficient in reading and math by the spring of 2014. Idaho uses the Idaho Standards Achievement Test (ISAT) and the Idaho Alternate Assessment (IAA) to measure proficiency. This report shows the percentage of students who met state goals for proficiency in reading and math.

More Information is available at: <http://www.sde.state.id.us/AYP/Ayp07/default.asp>



To Protect the privacy of individual students the following symbols are used.

^No participation determinations are made for groups of less than 10 students. The participation rate of students in this group is included in district and state totals.

~ No proficiency determinations are made for groups of less than 34 students. The proficiency level of students in this group is included in district and state totals

3rd Indicator - Graduation Rate		
2005	2006	Goal
92.45%	91.53%	Met