

Emmett Independent Dist #221

Gem County
 601 E Third St, Emmett, ID 83617
 Phone: (208) 365-6301 Fax: (208) 365-2961
 Tom Carlsen, Superintendent

District Characteristics 2006-07

Fall Enrollment	2,925	Special Education:	
Average Daily Attendance.....	2,738	Special Education Students.....	315
State Ranking Per ADA.....	25	Gifted and Talented Students.....	81
Number of Schools (sites):		Number of LEP Students**.....	131
Elementary.....	5	National School Lunch Program:	
Secondary.....	4	Average Daily Participation.....	1,644
Number of Accredited Schools:		Free and Reduced Meals.....	1,270
Approved.....	9	Lunch Price - Elementary.....	\$1.25
Approved with Merit.....	0	Lunch Price - Secondary.....	\$1.50
Approved with Comment.....	0	Pupil Transportation Program:	
Not Approved.....	0	Average Daily Ridership 2005-06	1,430
High School Diplomas Regular.....	196	District Owned Operation	
Other Completions*	6	* Certificates of Completion issued by the district	
Graduation Completion Rate...	89%	** Limited English Proficient (LEP)	

Highlights

The Emmett School District began its year searching for a new superintendent. The school district also adopted a K-3 math program, purchased grade 4-6 science textbooks, ran parenting courses for GT students, and implemented three tiered instruction for reading. In the technology area the district reorganized the department to achieve the goal of integrating technology as a tool for learning and installed a DS3 line for faster internet and data throughput. The district was very involved with the community creating a partnership with BSU for adult educational opportunities and holding Town Hall meetings on Internet Predators, Teen Dating Violence, and drug awareness. We also created a student, staff, and community wide crisis support program as well as continued support for the Starfish Coalition. The district ended the year out of this world with students from Carberry Intermediate School talking with astronauts on the International Space Station.

Progress Towards Meeting Goals

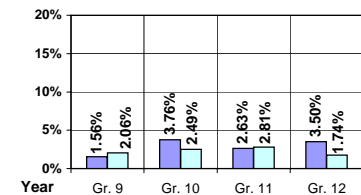
2006-07 Goals	Progress
Increase dual enrollment and parental choices such as IDLA and PLATO	Complete
Implement new math and science curriculum and textbooks	In progress
Mapping curriculum in a school calendar format to the state content standards	Completed for Reading, Language Arts, and Math
District-wide strategic planning – enrollment trends, mission and vision statements, and facilities improvement	In progress
Implement a school wide Title I program from targeted assist	Complete

Student Profiles

Ethnicity

Race	Male	Female	Total
White	44.78%	41.57%	86.35%
Black	0.62%	0.38%	1.00%
Hispanic	5.64%	5.33%	10.97%
Nat. Amer.	0.24%	0.31%	0.55%
Asian/Pac	0.51%	0.62%	1.13%
Total	51.79%	48.21%	100.00%

Dropouts



Year	Gr. 9	Gr. 10	Gr. 11	Gr. 12
05-06	4	10	7	7
06-07	5	6	7	4

Financial Information 2006-07

	M & O Fund	%	All Funds	%
Revenues:				
Local Taxes	\$173,496	1.14%	\$1,221,580	6.36%
Other Sources	273,227	1.79%	707,347	3.68%
State	14,797,078	97.07%	15,341,449	79.84%
Federal	0	0.00%	1,945,465	10.12%
Total	\$15,243,801	100.00%	\$19,215,841	100.00%

Supplemental Information

Property and Agricultural Equipment Replacement Taxes.....	\$38,434
Lottery Revenues.....	\$126,715
Technology Grant.....	\$93,590

Expenditures:	Total	%	ADA	Rank
M & O Instruction	\$10,068,394	63.13%		
M & O Support Services	5,862,697	36.76%		
M & O Other	16,506	0.11%		
Total M & O	\$15,947,597	100.00%	\$5,826	95
Total All Funds	\$20,001,981	100.00%	\$7,307	119

Tax Levies 9-1-2006

	Total	Per ADA	Rank
Property Market Values	\$717,520,931	\$262,108	69
Total General M & O Levies	0.000085096		87
Total District Levies	0.001478784		93

Staff Data 2006-07

Personnel:	FTE	ADA To FTE	Teachers Salaries:	Rank
Elementary Teachers	77.58	19	Beginning Salary on Schedule	\$30,000
Secondary Teachers	84.51	16	Highest Salary on Schedule	\$52,825
Administrators	12.11	226	Average Elementary Teacher's Salary	\$42,425 50
Other Certified Staff	13.41	204	Average Secondary Teacher's Salary	\$42,954 62
Total Certified Staff	187.61	15	Average Superintendent's Salary	\$100,801 20
Total Non-Certified Staff	112.00	24		

Note: Rank represents how this district compares to the other public school districts in the State of Idaho; high to low (1 being the highest).



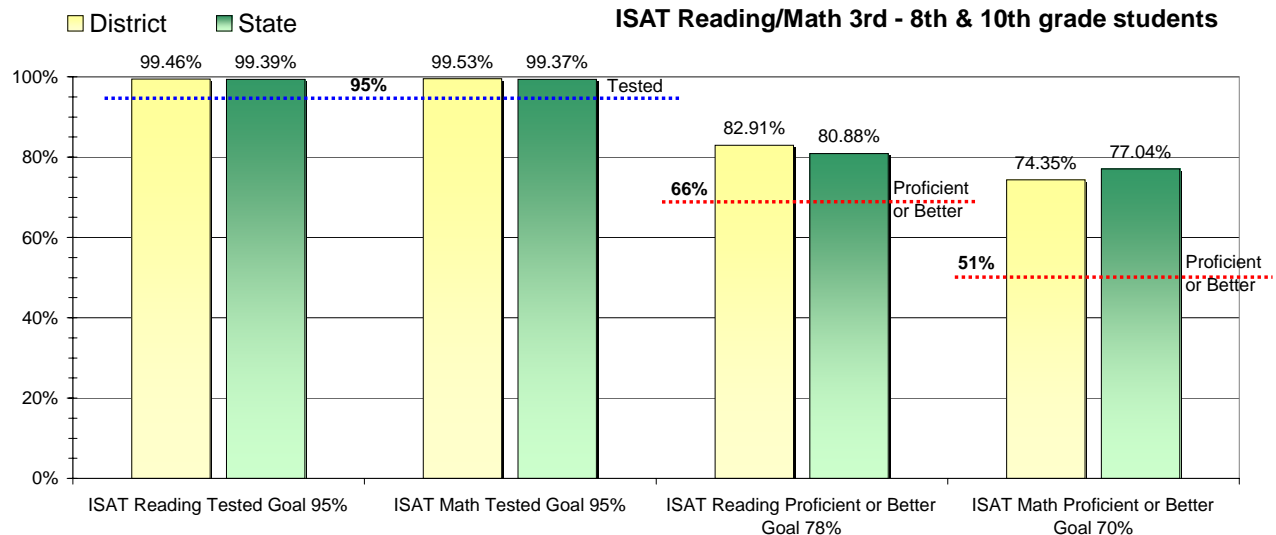
Adequate Yearly Progress and Assessment 2006-07

Did Emmett Independent Dist make Adequate yearly progress for 2006-07? No

Percent of the 41 targets that Emmett Independent Dist made: 78.05%

The goal in our nation is for all students in grades 3 through 8 and 10 to be proficient in reading and math by the spring of 2014. Idaho uses the Idaho Standards Achievement Test (ISAT) and the Idaho Alternate Assessment (IAA) to measure proficiency. This report shows the percentage of students who met state goals for proficiency in reading and math.

More Information is available at: <http://www.sde.state.id.us/AYP/Ayp07/default.asp>



To Protect the privacy of individual students the following symbols are used.

^No participation determinations are made for groups of less than 10 students. The participation rate of students in this group is included in district and state totals.

- No proficiency determinations are made for groups of less than 34 students. The proficiency level of students in this group is included in district and state totals

3rd Indicator - Graduation Rate

2005	2006	Goal
92.83%	84.19%	Met