

# Gooding Jr District #231

Gooding County  
 507 Idaho St, Gooding, ID 83330  
 Phone: (208) 934-4321 Fax: (208) 934-4403  
 Robert Stearns, Superintendent

| District Characteristics 2006-07  |       |   |        |
|-----------------------------------|-------|---|--------|
| Fall Enrollment .....             | 1,318 | Special Education:                                  |        |
| Average Daily Attendance.....     | 1,223 | Special Education Students.....                     | 123    |
| State Ranking Per ADA.....        | 44    | Gifted and Talented Students.....                   | 105    |
| Number of Schools (sites):        |       | Number of LEP Students**.....                       | 116    |
| Elementary.....                   | 1     | National School Lunch Program:                      |        |
| Secondary.....                    | 3     | Average Daily Participation.....                    | 925    |
| Number of Accredited Schools:     |       | Free and Reduced Meals.....                         | 596    |
| Approved.....                     | 4     | Lunch Price - Elementary.....                       | \$1.35 |
| Approved with Merit.....          | 0     | Lunch Price - Secondary.....                        | \$1.65 |
| Approved with Comment.....        | 0     | Pupil Transportation Program:                       |        |
| Not Approved.....                 | 0     | Average Daily Ridership 2005-06                     | 563    |
| High School Diplomas Regular..... | 82    | Contracted Operation                                |        |
| Other Completions* .....          | 1     | * Certificates of Completion issued by the district |        |
| Graduation Completion Rate...     | 91%   | ** Limited English Proficient (LEP)                 |        |

**Highlights**

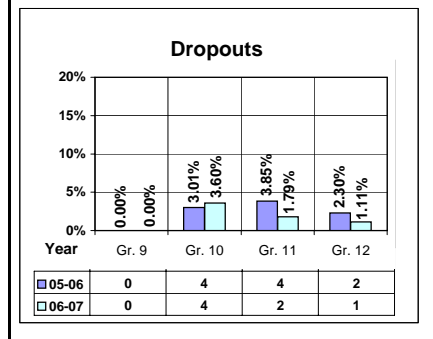
No Data Submitted

**Progress Towards Meeting Goals**

| 2006-07 Goals     | Progress |
|-------------------|----------|
| No Data Submitted |          |

**Student Profiles**      **Ethnicity**

| Race       | Male   | Female | Total   |
|------------|--------|--------|---------|
| White      | 39.00% | 34.52% | 73.52%  |
| Black      | 0.15%  | 0.00%  | 0.15%   |
| Hispanic   | 12.97% | 12.22% | 25.19%  |
| Nat. Amer. | 0.30%  | 0.15%  | 0.45%   |
| Asian/Pac  | 0.16%  | 0.53%  | 0.69%   |
| Total      | 52.58% | 47.42% | 100.00% |



### Financial Information 2006-07

|                  | M & O Fund         | %              | All Funds           | %              |
|------------------|--------------------|----------------|---------------------|----------------|
| <b>Revenues:</b> |                    |                |                     |                |
| Local Taxes      | \$45,792           | 0.66%          | \$686,061           | 6.83%          |
| Other Sources    | 113,374            | 1.64%          | 284,129             | 2.83%          |
| State            | 6,724,153          | 97.40%         | 7,255,362           | 72.19%         |
| Federal          | 20,005             | 0.30%          | 1,825,268           | 18.15%         |
| <b>Total</b>     | <b>\$6,903,324</b> | <b>100.00%</b> | <b>\$10,050,820</b> | <b>100.00%</b> |

#### Supplemental Information

|  |          |
|--|----------|
| Property and Agricultural Equipment Replacement Taxes..... | \$51,867 |
| Lottery Revenues.....                                      | \$58,529 |
| Technology Grant.....                                      | \$55,101 |

| Expenditures:          | Total               | %              | ADA            | Rank      |
|------------------------|---------------------|----------------|----------------|-----------|
| M & O Instruction      | \$4,678,806         | 65.66%         |                |           |
| M & O Support Services | 2,409,733           | 33.82%         |                |           |
| M & O Other            | 37,493              | 0.52%          |                |           |
| <b>Total M &amp; O</b> | <b>\$7,126,032</b>  | <b>100.00%</b> | <b>\$5,824</b> | <b>96</b> |
| <b>Total All Funds</b> | <b>\$10,236,670</b> | <b>100.00%</b> | <b>\$8,367</b> | <b>84</b> |

| Tax Levies 9-1-2006        | Total         | Per ADA   | Rank |
|----------------------------|---------------|-----------|------|
| Property Market Values     | \$279,555,583 | \$228,492 | 78   |
| Total General M & O Levies | 0.000000000   |           | 103  |
| Total District Levies      | 0.002314570   |           | 73   |

### Staff Data 2006-07

| Personnel:                | FTE   | ADA To FTE | Teachers Salaries:                  | Rank         |
|---------------------------|-------|------------|-------------------------------------|--------------|
| Elementary Teachers       | 39.15 | 18         | Beginning Salary on Schedule        | \$30,000     |
| Secondary Teachers        | 42.14 | 15         | Highest Salary on Schedule          | \$48,713     |
| Administrators            | 6.62  | 185        | Average Elementary Teacher's Salary | \$37,823 114 |
| Other Certified Staff     | 7.59  | 161        | Average Secondary Teacher's Salary  | \$39,272 115 |
| Total Certified Staff     | 95.50 | 13         | Average Superintendent's Salary     | \$85,730 44  |
| Total Non-Certified Staff | 46.78 | 26         |                                     |              |

Note: Rank represents how this district compares to the other public school districts in the State of Idaho; high to low (1 being the highest).



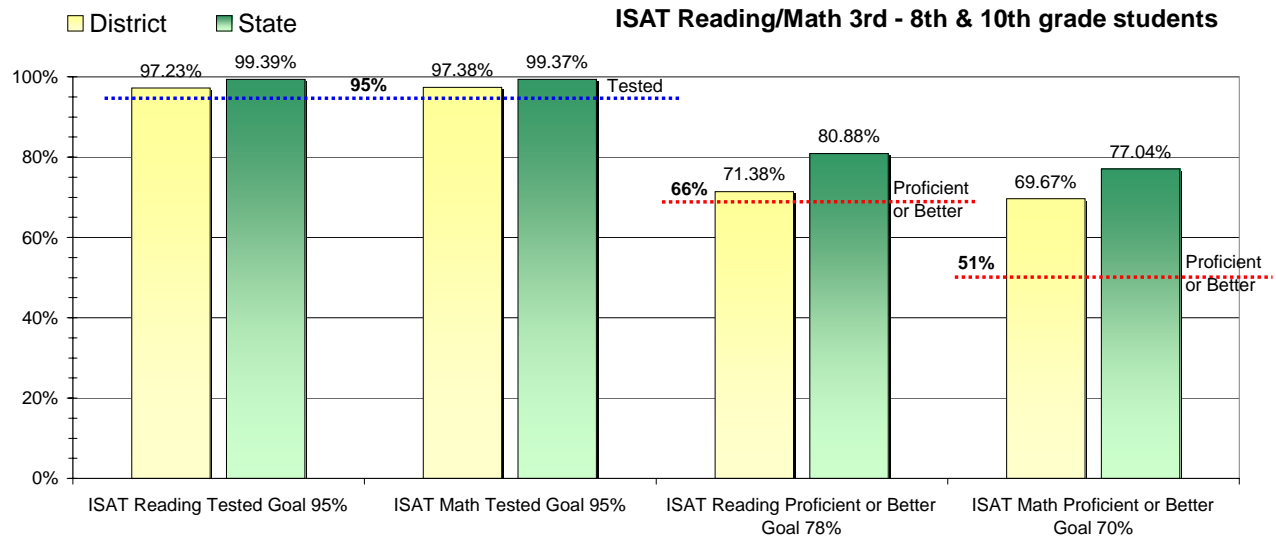
### Adequate Yearly Progress and Assessment 2006-07

Did Gooding Jt District make Adequate yearly progress for 2006-07? No

Percent of the 41 targets that Gooding Jt District made: 75.61%

The goal in our nation is for all students in grades 3 through 8 and 10 to be proficient in reading and math by the spring of 2014. Idaho uses the Idaho Standards Achievement Test (ISAT) and the Idaho Alternate Assessment (IAA) to measure proficiency. This report shows the percentage of students who met state goals for proficiency in reading and math.

More Information is available at: <http://www.sde.state.id.us/AYP/Ayp07/default.asp>



To Protect the privacy of individual students the following symbols are used.

^No participation determinations are made for groups of less than 10 students. The participation rate of students in this group is included in district and state totals.

~ No proficiency determinations are made for groups of less than 34 students. The proficiency level of students in this group is included in district and state totals

| 3rd Indicator - Graduation Rate |      |      |
|---------------------------------|------|------|
| 2005                            | 2006 | Goal |
| 87.95%                          | 88%  | Met  |