

## Wendell District #232

Gooding County  
 150 E Main St, PO Box 300, Wendell, ID 83355  
 Phone: (208) 536-2418 Fax: (208) 536-2629  
 Greg M. Lowe, Superintendent

### District Characteristics 2006-07

Fall Enrollment .....	1,120	Special Education:	
Average Daily Attendance.....	1,052	Special Education Students.....	154
State Ranking Per ADA.....	52	Gifted and Talented Students.....	0
Number of Schools (sites):		Number of LEP Students**.....	361
Elementary.....	1	National School Lunch Program:	
Secondary.....	2	Average Daily Participation.....	754
Number of Accredited Schools:		Free and Reduced Meals.....	627
Approved.....	3	Lunch Price - Elementary.....	\$1.30
Approved with Merit.....	0	Lunch Price - Secondary.....	\$1.60
Approved with Comment.....	0	Pupil Transportation Program:	
Not Approved.....	0	Average Daily Ridership 2005-06	420
High School Diplomas Regular.....	63	Contracted Operation	
Other Completions* .....	1		
Graduation Completion Rate...	91%	* Certificates of Completion issued by the district	
		** Limited English Proficient (LEP)	

### Highlights

No Data Submitted

### Progress Towards Meeting Goals

#### 2006-07 Goals

#### Progress

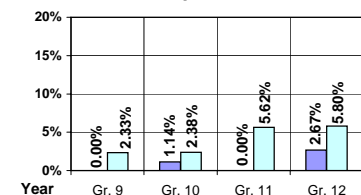
No Data Submitted

### Student Profiles

#### Ethnicity

Race	Male	Female	Total
White	28.93%	28.21%	57.14%
Black	0.27%	0.00%	0.27%
Hispanic	22.14%	20.27%	42.41%
Nat. Amer.	0.00%	0.09%	0.09%
Asian/Pac	0.00%	0.09%	0.09%
Total	51.34%	48.66%	100.00%

### Dropouts



Year	Gr. 9	Gr. 10	Gr. 11	Gr. 12
05-06	0	1	0	2
06-07	2	2	5	4

### Financial Information 2006-07

	M & O Fund	%	All Funds	%
<b>Revenues:</b>				
Local Taxes	\$144,948	2.42%	\$826,481	10.12%
Other Sources	104,204	1.74%	250,043	3.06%
State	5,731,193	95.77%	5,912,327	72.38%
Federal	3,679	0.07%	1,179,476	14.44%
<b>Total</b>	<b>\$5,984,024</b>	<b>100.00%</b>	<b>\$8,168,327</b>	<b>100.00%</b>

#### Supplemental Information

Property and Agricultural Equipment Replacement Taxes.....	\$97,191
Lottery Revenues.....	\$48,457
Technology Grant.....	\$49,016

Expenditures:	Total	%	ADA	Rank
M & O Instruction	\$3,723,994	63.71%		
M & O Support Services	2,068,232	35.38%		
M & O Other	53,064	0.91%		
<b>Total M &amp; O</b>	<b>\$5,845,290</b>	<b>100.00%</b>	<b>\$5,558</b>	<b>108</b>
<b>Total All Funds</b>	<b>\$8,022,115</b>	<b>100.00%</b>	<b>\$7,628</b>	<b>105</b>

Tax Levies 9-1-2006	Total	Per ADA	Rank
Property Market Values	\$208,889,864	\$198,619	97
Total General M & O Levies	0.000577630		69
Total District Levies	0.003818778		39

### Staff Data 2006-07

Personnel:	FTE	ADA To FTE	Teachers Salaries:	Rank
Elementary Teachers	34.95	17	Beginning Salary on Schedule	\$30,000
Secondary Teachers	34.75	13	Highest Salary on Schedule	\$48,113
Administrators	5.34	197	Average Elementary Teacher's Salary	\$39,409 98
Other Certified Staff	4.66	226	Average Secondary Teacher's Salary	\$39,231 118
Total Certified Staff	79.70	13	Average Superintendent's Salary	\$80,340 65
Total Non-Certified Staff	39.84	26		

Note: Rank represents how this district compares to the other public school districts in the State of Idaho; high to low (1 being the highest).



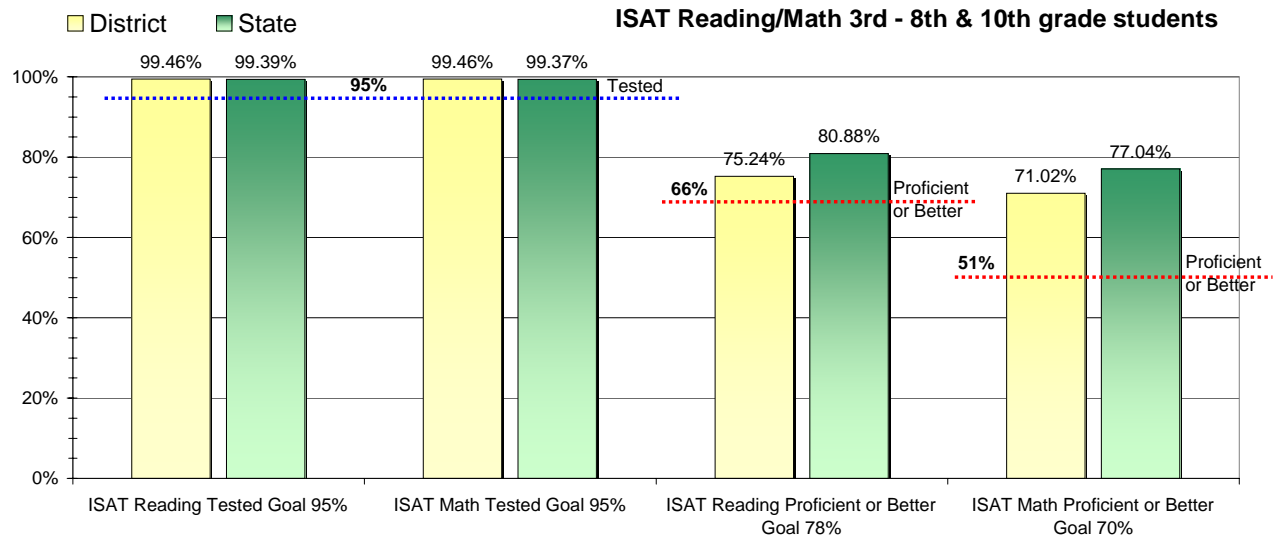
### Adequate Yearly Progress and Assessment 2006-07

Did Wendell District make Adequate yearly progress for 2006-07? No

Percent of the 41 targets that Wendell District made: 78.05%

The goal in our nation is for all students in grades 3 through 8 and 10 to be proficient in reading and math by the spring of 2014. Idaho uses the Idaho Standards Achievement Test (ISAT) and the Idaho Alternate Assessment (IAA) to measure proficiency. This report shows the percentage of students who met state goals for proficiency in reading and math.

More Information is available at: <http://www.sde.state.id.us/AYP/Ayp07/default.asp>



To Protect the privacy of individual students the following symbols are used.

^No participation determinations are made for groups of less than 10 students. The participation rate of students in this group is included in district and state totals.

~ No proficiency determinations are made for groups of less than 34 students. The proficiency level of students in this group is included in district and state totals

3rd Indicator - Graduation Rate		
2005	2006	Goal
84.85%	90.91%	Met