

Grangeville Jt District #241

Idaho County
 714 Jefferson St, Grangeville, ID 83530
 Phone: (208) 983-0990 Fax: (208) 983-1245
 Dr. Wayne Davis, Superintendent

District Characteristics 2006-07

Fall Enrollment	1,326	Special Education:	
Average Daily Attendance.....	1,223	Special Education Students.....	171
State Ranking Per ADA.....	45	Gifted and Talented Students.....	0
Number of Schools (sites):		Number of LEP Students**.....	0
Elementary.....	5	National School Lunch Program:	
Secondary.....	3	Average Daily Participation.....	717
Number of Accredited Schools:		Free and Reduced Meals.....	608
Approved.....	7	Lunch Price - Elementary.....	\$1.85
Approved with Merit.....	0	Lunch Price - Secondary.....	\$2.10
Approved with Comment.....	1	Pupil Transportation Program:	
Not Approved.....	0	Average Daily Ridership 2005-06	510
High School Diplomas Regular.....	78	District Owned Operation	
Other Completions*	0	* Certificates of Completion issued by the district	
Graduation Completion Rate...	95%	** Limited English Proficient (LEP)	

Highlights

Our pride comes in the efforts of our staff, student achievement and the support from our local communities. An over ride levy was passed to support the district this past year and another has been presented for the patron approval at this time.

Curriculum reviews continue to focus on health and recently were completed in social studies adoptions. Our technology upgrades are focused on assisting the classroom teacher in their access to instructional information currently appropriate for the teaching area. Parent access to student achievement, attendance, grades and staff communication is being implemented as a result of adoption of the Power School program in each of our schools.

The district is currently dividing into two separate districts as a result of the recent deconsolidation election. The results of this effort will provide more local control and involvement for communities within our district.

After School Programs continue to provide extended learning and appropriate social development for our students in four of our elementary schools. Grants to support supplemental efforts for our teachers in the areas of science and professional technical programs were received. We continue to apply and encourage supplemental support beyond the traditional funding provided for our schools.

Progress Towards Meeting Goals

2006-07 Goals

Progress

Curriculum offerings to be expanded to meet the needs of students and community development

As a result of HB 770 this past year, the elective offerings have been expanded in Salmon River High School and Clearwater Valley High School.

Provide a focus on the wellness for students, staff, and community members

A focus on the nutritional offerings, health curriculum and physical activity continue to be reviewed during the year. Elementary physical education skill development is offered in the elementary programs.

Stability in funding of educational programs.

Administrative and trustee efforts focused on the replacement of funds as a result of the sunset of the Secure Schools and Rural Communities congressional act. (Craig/Wyden forest funds). Legislative effort, congressional lobbying and collaboration with the Idaho County commissioners continue to be an effort in an attempt to provide revenues for our local roads and schools from those federal timber resources located in our school district and counties.

Continue to encourage local control and support of the educational programs within each of our community school settings.

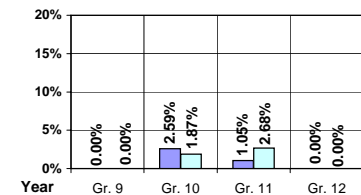
As a result of a recent deconsolidation process the district has divided into two separate districts. This will have the impact of providing more local control for the patrons as they consider what each of their schools should provide. The prior district size ranked 27th largest in the nation with a declining enrollment and area population.

Student Profiles

Ethnicity

Race	Male	Female	Total
White	49.31%	44.27%	93.58%
Black	0.15%	0.15%	0.30%
Hispanic	1.06%	1.36%	2.42%
Nat. Amer.	1.58%	1.13%	2.71%
Asian/Pac	0.68%	0.31%	0.99%
Total	52.78%	47.22%	100.00%

Dropouts



Year	Gr. 9	Gr. 10	Gr. 11	Gr. 12
05-06	0	3	1	0
06-07	0	2	3	0

Financial Information 2006-07

	M & O Fund	%	All Funds	%
Revenues:				
Local Taxes	\$1,100,131	10.84%	\$2,096,553	14.60%
Other Sources	494,498	4.87%	836,192	5.82%
State	8,507,834	83.83%	8,835,234	61.53%
Federal	45,907	0.46%	2,590,370	18.05%
Total	\$10,148,370	100.00%	\$14,358,349	100.00%

Supplemental Information

Property and Agricultural Equipment Replacement Taxes.....	\$46,474
Lottery Revenues.....	\$57,379
Technology Grant.....	\$60,025

Expenditures:	Total	%	ADA	Rank
M & O Instruction	\$6,476,416	59.68%		
M & O Support Services	4,319,684	39.81%		
M & O Other	55,173	0.51%		
Total M & O	\$10,851,273	100.00%	\$8,874	29
Total All Funds	\$14,042,098	100.00%	\$11,484	36

Tax Levies 9-1-2006

	Total	Per ADA	Rank
Property Market Values	\$761,857,970	\$623,049	25
Total General M & O Levies	0.001261840		42
Total District Levies	0.002541606		66

Staff Data 2006-07

Personnel:	FTE	ADA To FTE	Teachers Salaries:	Rank
Elementary Teachers	42.57	16	Beginning Salary on Schedule	\$30,000
Secondary Teachers	54.90	11	Highest Salary on Schedule	\$46,714
Administrators	6.83	179	Average Elementary Teacher's Salary	\$42,152 57
Other Certified Staff	8.19	149	Average Secondary Teacher's Salary	\$43,015 61
Total Certified Staff	112.49	11	Average Superintendent's Salary	\$91,472 35
Total Non-Certified Staff	58.52	21		

Note: Rank represents how this district compares to the other public school districts in the State of Idaho; high to low (1 being the highest).



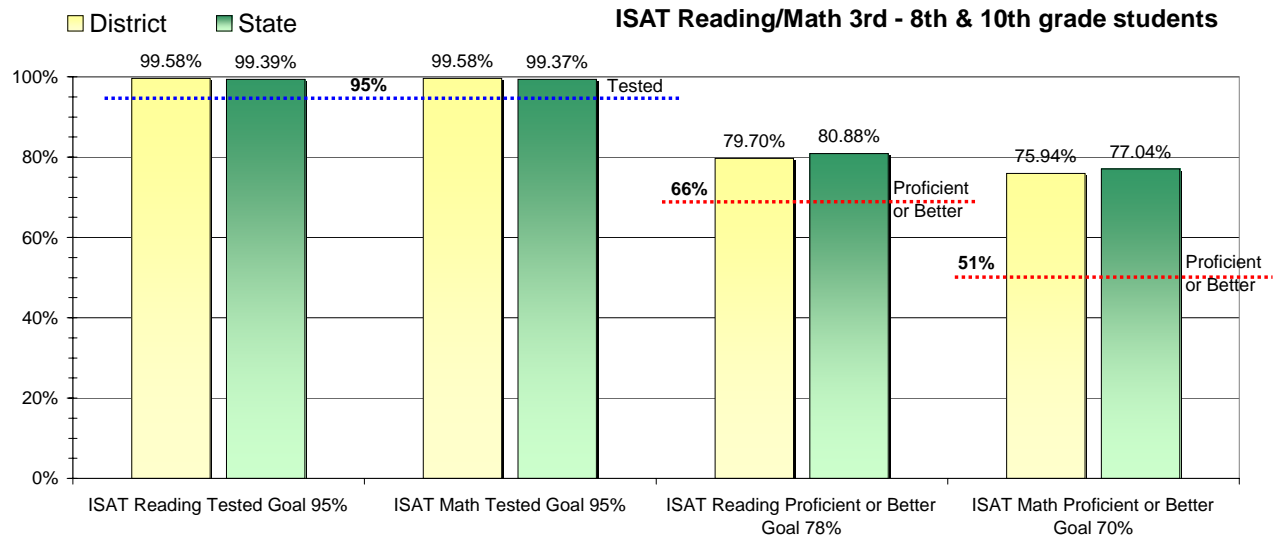
Adequate Yearly Progress and Assessment 2006-07

Did Grangeville Jt District make Adequate yearly progress for 2006-07? No

Percent of the 41 targets that Grangeville Jt District made: 92.68%

The goal in our nation is for all students in grades 3 through 8 and 10 to be proficient in reading and math by the spring of 2014. Idaho uses the Idaho Standards Achievement Test (ISAT) and the Idaho Alternate Assessment (IAA) to measure proficiency. This report shows the percentage of students who met state goals for proficiency in reading and math.

More Information is available at: <http://www.sde.state.id.us/AYP/Ayp07/default.asp>



To Protect the privacy of individual students the following symbols are used.

^No participation determinations are made for groups of less than 10 students. The participation rate of students in this group is included in district and state totals.

~ No proficiency determinations are made for groups of less than 34 students. The proficiency level of students in this group is included in district and state totals

3rd Indicator - Graduation Rate		
2005	2006	Goal
91.35%	95.2%	Met