

Lakeland District #272

Kootenai County
 15506 N Washington, PO Box 39, Rathdrum, ID 83858
 Phone: (208) 687-0431 Fax: (208) 687-1884
 Charles Kinsey, Superintendent

Fall Enrollment	4,485	Special Education:	
Average Daily Attendance.....	4,229	Special Education Students.....	394
State Ranking Per ADA.....	15	Gifted and Talented Students.....	105
Number of Schools (sites):		Number of LEP Students**.....	1
Elementary.....	5	National School Lunch Program:	
Secondary.....	5	Average Daily Participation.....	2,036
Number of Accredited Schools:		Free and Reduced Meals.....	1,686
Approved.....	10	Lunch Price - Elementary.....	\$2.00
Approved with Merit.....	0	Lunch Price - Secondary.....	\$2.25
Approved with Comment.....	0	Pupil Transportation Program:	
Not Approved.....	0	Average Daily Ridership 2005-06	1,573
High School Diplomas Regular.....	330	District Owned Operation	
Other Completions*	0	* Certificates of Completion issued by the district	
Graduation Completion Rate...	94%	** Limited English Proficient (LEP)	

Highlights

I am proud of the achievement level of our students and the numerous awards that our staff and schools receive. Our students continue to surpass state averages for language usage, reading, and mathematics on State of Idaho achievement tests. And, all Lakeland Schools are fully accredited either through the State of Idaho or the Northwest Association of Schools and Colleges.

Commitment to academic excellence and dedication to student success is not just a slogan, but it is our practice and our promise to parents! In planning for the future, we will sustain our efforts to implement strategies for accomplishing performance gains in all grades by promoting effective teaching strategies and curriculum that are aligned with state assessments and the new state performance standards. The success of the Lakeland Joint School District is made possible by the support and hard work of the Board of Trustees, staff, students, parents, and patrons. Lakeland is truly fortunate, to have such strong support. The children of our community deserve and are receiving the very best we have to offer!

Progress Towards Meeting Goals

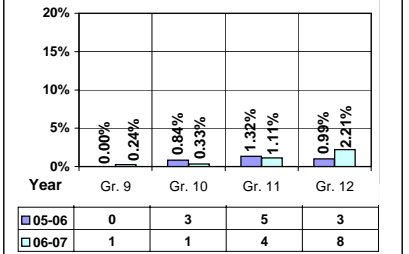
2006-07 Goals	Progress
No Data Submitted	

Student Profiles

Ethnicity

Race	Male	Female	Total
White	49.26%	46.78%	96.04%
Black	0.11%	0.33%	0.44%
Hispanic	1.38%	0.65%	2.03%
Nat. Amer.	0.51%	0.31%	0.82%
Asian/Pac	0.27%	0.40%	0.67%
Total	51.53%	48.47%	100.00%

Dropouts



Financial Information 2006-07

	M & O Fund	%	All Funds	%
Revenues:				
Local Taxes	\$415,130	1.88%	\$4,035,003	13.34%
Other Sources	349,411	1.58%	1,561,626	5.16%
State	21,076,432	95.53%	21,766,366	71.98%
Federal	221,259	1.01%	2,876,809	9.52%
Total	\$22,062,232	100.00%	\$30,239,804	100.00%

Supplemental Information

Property and Agricultural Equipment Replacement Taxes.....	\$7,802
Lottery Revenues.....	\$194,877
Technology Grant.....	\$132,217

Expenditures:	Total	%	ADA	Rank
M & O Instruction	\$14,912,168	64.91%		
M & O Support Services	8,062,557	35.09%		
M & O Other	0	0.00%		
Total M & O	\$22,974,725	100.00%	\$5,433	113
Total All Funds	\$38,897,050	100.00%	\$9,199	63

Tax Levies 9-1-2006	Total	Per ADA	Rank
Property Market Values	\$2,426,618,031	\$573,864	26
Total General M & O Levies	0.000089723		86
Total District Levies	0.001604176		90

Staff Data 2006-07

Personnel:	FTE	ADA To FTE	Teachers Salaries:	Rank
Elementary Teachers	124.00	18	Beginning Salary on Schedule	\$30,000
Secondary Teachers	120.82	18	Highest Salary on Schedule	\$59,426
Administrators	18.84	224	Average Elementary Teacher's Salary	\$45,607 19
Other Certified Staff	26.27	161	Average Secondary Teacher's Salary	\$46,566 25
Total Certified Staff	289.93	15	Average Superintendent's Salary	\$104,100 14
Total Non-Certified Staff	122.32	35		

Note: Rank represents how this district compares to the other public school districts in the State of Idaho; high to low (1 being the highest).



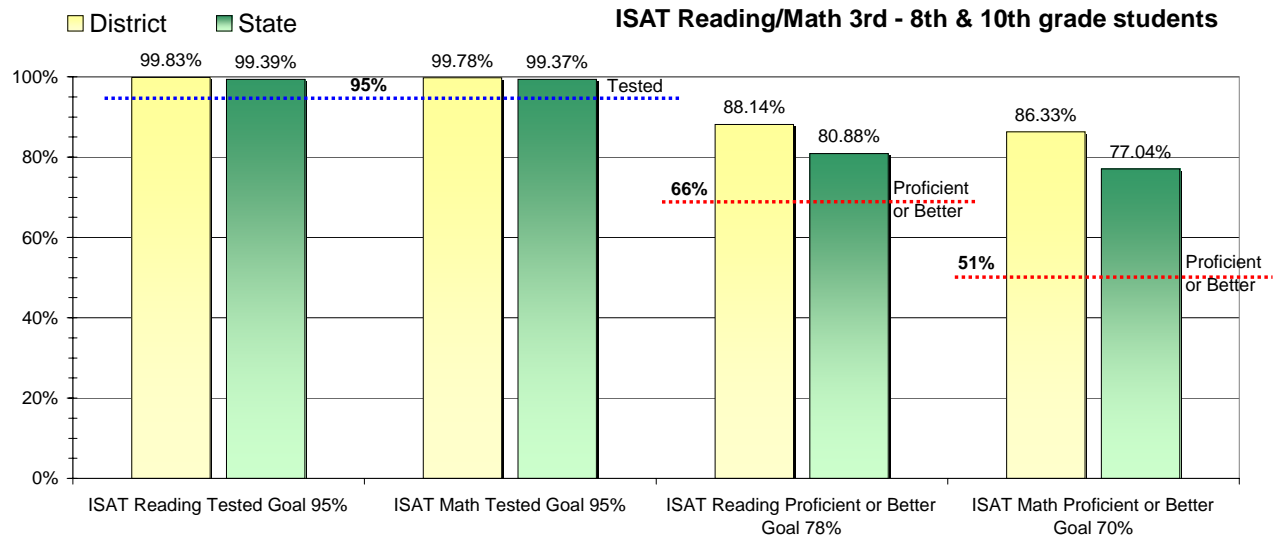
Adequate Yearly Progress and Assessment 2006-07

Did Lakeland District make Adequate yearly progress for 2006-07? No

Percent of the 41 targets that Lakeland District made: 95.12%

The goal in our nation is for all students in grades 3 through 8 and 10 to be proficient in reading and math by the spring of 2014. Idaho uses the Idaho Standards Achievement Test (ISAT) and the Idaho Alternate Assessment (IAA) to measure proficiency. This report shows the percentage of students who met state goals for proficiency in reading and math.

More Information is available at: <http://www.sde.state.id.us/AYP/Ayp07/default.asp>



To Protect the privacy of individual students the following symbols are used.

^ No participation determinations are made for groups of less than 10 students. The participation rate of students in this group is included in district and state totals.

~ No proficiency determinations are made for groups of less than 34 students. The proficiency level of students in this group is included in district and state totals

3rd Indicator - Graduation Rate		
2005	2006	Goal
89.93%	95.27%	Met