

Post Falls District #273

Kootenai County
 206 W Mullan Ave, PO Box 40, Post Falls, ID 83877
 Phone: (208) 773-1658 Fax: (208) 773-3218
 Jerry Keane, Superintendent

District Characteristics 2006-07

Fall Enrollment	5,290	Special Education:	
Average Daily Attendance.....	4,952	Special Education Students.....	504
State Ranking Per ADA.....	11	Gifted and Talented Students.....	289
Number of Schools (sites):		Number of LEP Students**.....	0
Elementary.....	5	National School Lunch Program:	
Secondary.....	4	Average Daily Participation.....	3,182
Number of Accredited Schools:		Free and Reduced Meals.....	2,157
Approved.....	8	Lunch Price - Elementary.....	\$1.75
Approved with Merit.....	0	Lunch Price - Secondary.....	\$2.25
Approved with Comment.....	0	Pupil Transportation Program:	
Not Approved.....	0	Average Daily Ridership 2005-06	2,240
High School Diplomas Regular.....	284	District Owned Operation	
Other Completions*	10		
Graduation Completion Rate...	87%	* Certificates of Completion issued by the district	
		** Limited English Proficient (LEP)	

Highlights

No Data Submitted

Progress Towards Meeting Goals

2006-07 Goals

Progress

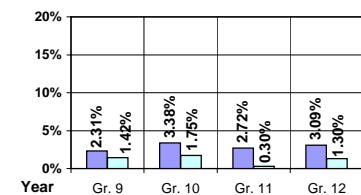
No Data Submitted

Student Profiles

Ethnicity

Race	Male	Female	Total
White	47.38%	45.05%	92.43%
Black	0.62%	0.51%	1.13%
Hispanic	1.87%	1.81%	3.68%
Nat. Amer.	0.60%	0.78%	1.38%
Asian/Pac	0.89%	0.49%	1.38%
Total	51.36%	48.64%	100.00%

Dropouts



Year	Gr. 9	Gr. 10	Gr. 11	Gr. 12
05-06	11	13	10	9
06-07	7	7	1	4

Financial Information 2006-07

	M & O Fund	%	All Funds	%
Revenues:				
Local Taxes	\$1,623,478	6.23%	\$5,723,796	12.14%
Other Sources	415,591	1.59%	13,002,541	27.57%
State	24,049,390	92.18%	24,970,344	52.95%
Federal	0	0.00%	3,461,258	7.34%
Total	\$26,088,459	100.00%	\$47,157,939	100.00%

Supplemental Information

Property and Agricultural Equipment Replacement Taxes.....	\$6,457
Lottery Revenues.....	\$223,167
Technology Grant.....	\$148,751

Expenditures:	Total	%	ADA	Rank
M & O Instruction	\$18,069,046	68.82%		
M & O Support Services	8,163,347	31.09%		
M & O Other	22,428	0.09%		
Total M & O	\$26,254,821	100.00%	\$5,302	117
Total All Funds	\$37,863,694	100.00%	\$7,646	102

Tax Levies 9-1-2006

	Total	Per ADA	Rank
Property Market Values	\$2,522,770,710	\$509,450	32
Total General M & O Levies	0.000559164		70
Total District Levies	0.002227963		75

Staff Data 2006-07

Personnel:	FTE	ADA To FTE	Teachers Salaries:	Rank
Elementary Teachers	141.87	20	Beginning Salary on Schedule	\$30,000
Secondary Teachers	129.06	18	Highest Salary on Schedule	\$54,908
Administrators	18.08	274	Average Elementary Teacher's Salary	\$44,173 35
Other Certified Staff	25.15	197	Average Secondary Teacher's Salary	\$47,289 23
Total Certified Staff	314.16	16	Average Superintendent's Salary	\$99,910 21
Total Non-Certified Staff	179.04	28		

Note: Rank represents how this district compares to the other public school districts in the State of Idaho; high to low (1 being the highest).



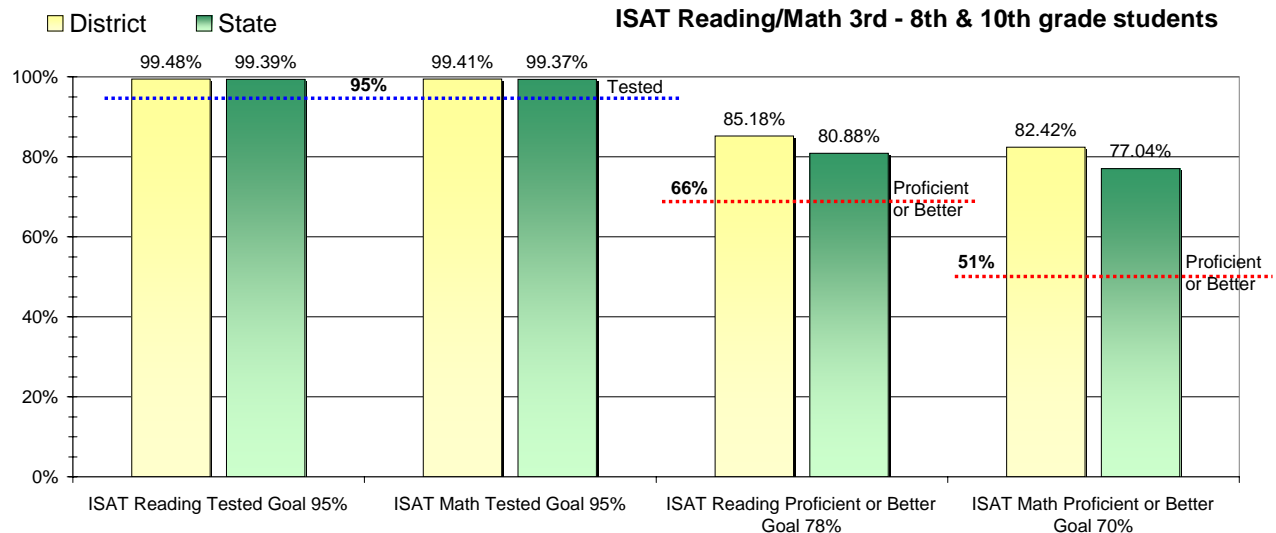
Adequate Yearly Progress and Assessment 2006-07

Did Post Falls District make Adequate yearly progress for 2006-07? No

Percent of the 41 targets that Post Falls District made: 78.05%

The goal in our nation is for all students in grades 3 through 8 and 10 to be proficient in reading and math by the spring of 2014. Idaho uses the Idaho Standards Achievement Test (ISAT) and the Idaho Alternate Assessment (IAA) to measure proficiency. This report shows the percentage of students who met state goals for proficiency in reading and math.

More Information is available at: <http://www.sde.state.id.us/AYP/Ayp07/default.asp>



To Protect the privacy of individual students the following symbols are used.

^No participation determinations are made for groups of less than 10 students. The participation rate of students in this group is included in district and state totals.

- No proficiency determinations are made for groups of less than 34 students. The proficiency level of students in this group is included in district and state totals

3rd Indicator - Graduation Rate

2005	2006	Goal
88.47%	87.33%	Met