

# Moscow District #281

Latah County  
 650 N Cleveland, Moscow, ID 83843  
 Phone: (208) 882-1120 Fax: (208) 883-4440  
 Dr. Candis R. Donicht, Superintendent

## District Characteristics 2006-07

Fall Enrollment .....	2,407	Special Education:	
Average Daily Attendance.....	2,204	Special Education Students.....	268
State Ranking Per ADA.....	28	Gifted and Talented Students.....	247
Number of Schools (sites):		Number of LEP Students**.....	7
Elementary.....	4	National School Lunch Program:	
Secondary.....	3	Average Daily Participation.....	1,271
Number of Accredited Schools:		Free and Reduced Meals.....	572
Approved.....	7	Lunch Price - Elementary.....	\$1.50
Approved with Merit.....	0	Lunch Price - Secondary.....	\$2.00
Approved with Comment.....	0	Pupil Transportation Program:	
Not Approved.....	0	Average Daily Ridership 2005-06	577
High School Diplomas Regular.....	166	District Owned Operation	
Other Completions* .....	0	* Certificates of Completion issued by the district	
Graduation Completion Rate...	90%	** Limited English Proficient (LEP)	

## Highlights

The Strategic Plan Steering Committee reviewed the 2006-07 goals and evaluated progress throughout the year. The Board held and attended public hearings on the District's \$1.97 million increase to the Supplemental Levy.

Work continued on alignment of curriculum, instruction, and assessment with a focus on preparing teachers, staff and students for ISAT administration with the new state vendor.

Members of the Facilities Task Force participated in the City of Moscow's 18-month project to rewrite the Comprehensive Plan.

## Progress Towards Meeting Goals

### 2006-07 Goals

### Progress

**Communication** – create a coordinated and effective communication process in an atmosphere of trust & respect throughout the District & community.

The Strategic Plan was reviewed, public forums were hosted, & an informational campaign was launched for the successful passage of an increase to the Supplemental Levy.

**Student Achievement** – focus on continuously increasing student achievement by providing a research-based, sequential, K-12 curriculum, instruction, & assessment process that is aligned with state & local achievement standards.

Teachers and students received training to prepare for ISAT testing with new state vendor.

**Technology** – focus on continuously improving student achievement & improve the overall quality & effectiveness of curriculum, instruction, assessment, & administrative programs by integrating a variety of technology based resources, thus providing rich opportunities for learning in a variety of formats & increasing the efficiency of all district operations.

The District implemented Phase 1 of the transition to PowerSchool.

**Learning Environment** – provide a safe, supportive, & productive environment in which all students can learn.

Emergency plans were reviewed & revised. Building security was enhanced through use of security cameras.

**Business & Operations** – focus on supporting instructional, administrative, & support staff efficiently and cost effectively.

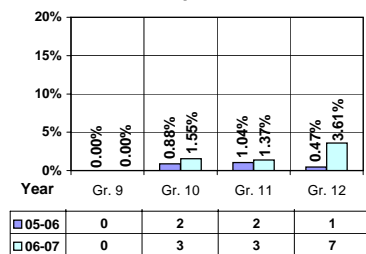
The District successfully passed a \$1.97 million increase to its Supplemental Levy.

## Student Profiles

### Ethnicity

Race	Male	Female	Total
White	46.80%	42.92%	89.72%
Black	0.96%	1.00%	1.96%
Hispanic	2.12%	1.54%	3.66%
Nat. Amer.	0.87%	0.54%	1.41%
Asian/Pac	1.50%	1.75%	3.25%
Total	52.25%	47.75%	100.00%

## Dropouts



### Financial Information 2006-07

	M & O Fund	%	All Funds	%
<b>Revenues:</b>				
Local Taxes	\$5,914,958	33.65%	\$5,926,341	29.92%
Other Sources	466,863	2.66%	1,151,718	5.81%
State	11,194,235	63.69%	11,490,847	58.01%
Federal	0	0.00%	1,237,785	6.26%
<b>Total</b>	<b>\$17,576,056</b>	<b>100.00%</b>	<b>\$19,806,691</b>	<b>100.00%</b>

#### Supplemental Information

Property and Agricultural Equipment Replacement Taxes.....	\$19,383
Lottery Revenues.....	\$103,548
Technology Grant.....	\$78,404

Expenditures:	Total	%	ADA	Rank
M & O Instruction	\$10,759,749	60.64%		
M & O Support Services	6,826,279	38.47%		
M & O Other	157,960	0.89%		
<b>Total M &amp; O</b>	<b>\$17,743,988</b>	<b>100.00%</b>	<b>\$8,052</b>	<b>42</b>
<b>Total All Funds</b>	<b>\$20,600,583</b>	<b>100.00%</b>	<b>\$9,348</b>	<b>60</b>

Tax Levies 9-1-2006	Total	Per ADA	Rank
Property Market Values	\$1,034,186,182	\$469,304	36
Total General M & O Levies	0.005541043		4
Total District Levies	0.005541043		8

### Staff Data 2006-07

Personnel:	FTE	ADA To FTE	Teachers Salaries:	Rank
Elementary Teachers	76.77	15	Beginning Salary on Schedule	\$30,000
Secondary Teachers	76.70	15	Highest Salary on Schedule	\$53,445
Administrators	12.15	181	Average Elementary Teacher's Salary	\$44,890 25
Other Certified Staff	17.25	128	Average Secondary Teacher's Salary	\$46,202 27
Total Certified Staff	182.87	12	Average Superintendent's Salary	\$103,115 16
Total Non-Certified Staff	93.13	24		

Note: Rank represents how this district compares to the other public school districts in the State of Idaho; high to low (1 being the highest).



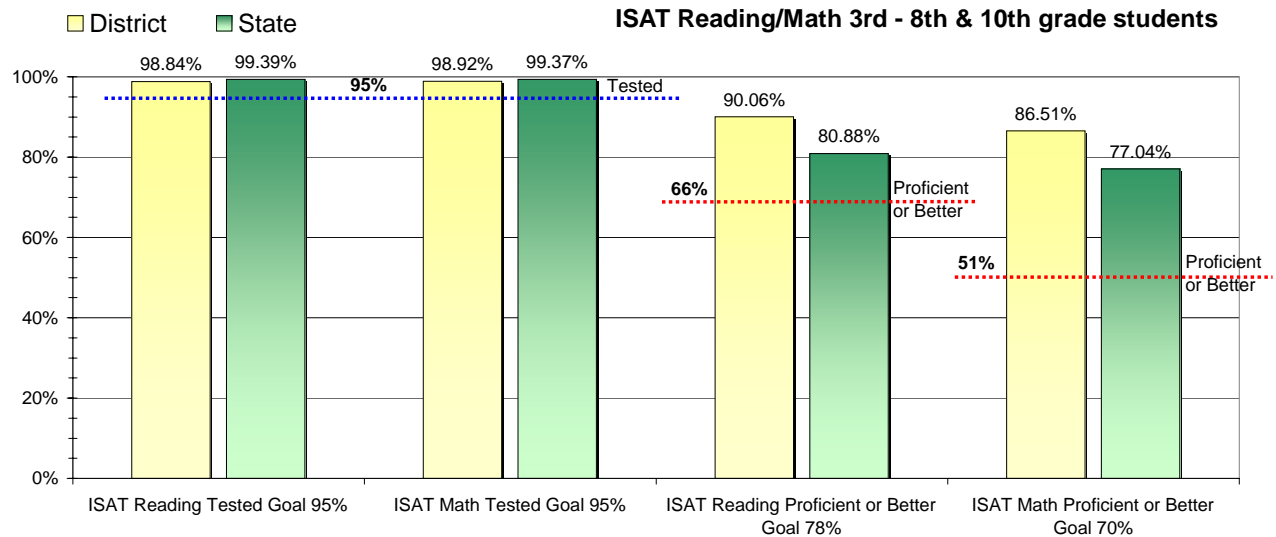
### Adequate Yearly Progress and Assessment 2006-07

Did Moscow District make Adequate yearly progress for 2006-07? Yes

Percent of the 41 targets that Moscow District made: 100%

The goal in our nation is for all students in grades 3 through 8 and 10 to be proficient in reading and math by the spring of 2014. Idaho uses the Idaho Standards Achievement Test (ISAT) and the Idaho Alternate Assessment (IAA) to measure proficiency. This report shows the percentage of students who met state goals for proficiency in reading and math.

More Information is available at: <http://www.sde.state.id.us/AYP/Ayp07/default.asp>



To Protect the privacy of individual students the following symbols are used.

^ No participation determinations are made for groups of less than 10 students. The participation rate of students in this group is included in district and state totals.

~ No proficiency determinations are made for groups of less than 34 students. The proficiency level of students in this group is included in district and state totals

3rd Indicator - Graduation Rate		
2005	2006	Goal
87.62%	93.03%	Met