

Potlatch District #285

Latah County
 130 6th St Hwy 6, Potlatch, ID 83855
 Phone: (208) 875-0327 Fax: (208) 875-1028
 Joseph A. Kren, Superintendent

District Characteristics 2006-07

Fall Enrollment	498	Special Education:	
Average Daily Attendance.....	468	Special Education Students.....	59
State Ranking Per ADA.....	73	Gifted and Talented Students.....	36
Number of Schools (sites):		Number of LEP Students**.....	0
Elementary.....	1	National School Lunch Program:	
Secondary.....	1	Average Daily Participation.....	288
Number of Accredited Schools:		Free and Reduced Meals.....	187
Approved.....	1	Lunch Price - Elementary.....	\$1.50
Approved with Merit.....	0	Lunch Price - Secondary.....	\$1.65
Approved with Comment.....	1	Pupil Transportation Program:	
Not Approved.....	0	Average Daily Ridership 2005-06	194
High School Diplomas Regular.....	43	District Owned Operation	
Other Completions*	0	* Certificates of Completion issued by the district	
Graduation Completion Rate...	98%	** Limited English Proficient (LEP)	

Highlights

Curriculum and Assessment Guide and Technology Standards and Assessment Guide were developed by and adopted by the board of trustees. These outlined an aggressive curriculum alignment plan for all content areas. Technology, professional development and subject area committees were developed and met regularly. Procedures were developed and implemented on how to disaggregate, and disseminate data and make adjustments to instruction based on what the data shows. Junior/Senior High School made AYP and moved from needs improvement to 1st year out or needs improvement. All seniors passed the ISAT with a score of proficient or better. On-line grading program was implemented.

Progress Towards Meeting Goals

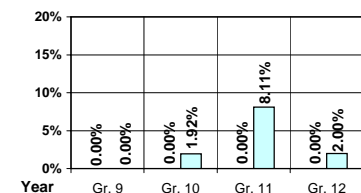
2006-07 Goals	Progress
Provide remediation to those students not scoring proficient on the ISAT	Individual instruction was provided using PLATO. Elementary students were included.
Insure all graduating seniors score proficient on ISAT	All graduating seniors scored proficient on the ISAT.
Make adequate yearly progress in the Junior/Senior High School	Scores will not be available until June.
Make adequate yearly progress in the Elementary School	Scores will not be available until June.
Develop curriculum and assessment guide	Completed
Align and develop technology standards and assessment guide	Completed
Develop Ten Year Facilities Plan	Will be completed by June 30, 2007
Continue development and implementation of Results to Intervention model at the Elementary School.	Professional development was provided and plans written for individual students.

Student Profiles

Ethnicity

Race	Male	Female	Total
White	50.41%	46.59%	97.00%
Black	0.00%	0.00%	0.00%
Hispanic	0.60%	0.40%	1.00%
Nat. Amer.	0.20%	1.00%	1.20%
Asian/Pac	0.40%	0.40%	0.80%
Total	51.61%	48.39%	100.00%

Dropouts



Year	Gr. 9	Gr. 10	Gr. 11	Gr. 12
05-06	0	0	0	0
06-07	0	1	3	1

Financial Information 2006-07

	M & O Fund	%	All Funds	%
Revenues:				
Local Taxes	\$664,182	17.10%	\$763,602	16.87%
Other Sources	120,282	3.10%	217,496	4.80%
State	3,098,394	79.80%	3,226,135	71.27%
Federal	0	0.00%	319,436	7.06%
Total	\$3,882,858	100.00%	\$4,526,669	100.00%

Supplemental Information

Property and Agricultural Equipment Replacement Taxes.....	\$37,427
Lottery Revenues.....	\$21,727
Technology Grant.....	\$34,312

Expenditures:	Total	%	ADA	Rank
M & O Instruction	\$2,184,894	60.63%		
M & O Support Services	1,396,345	38.75%		
M & O Other	22,205	0.62%		
Total M & O	\$3,603,444	100.00%	\$7,706	47
Total All Funds	\$4,168,539	100.00%	\$8,915	69

Tax Levies 9-1-2006

	Total	Per ADA	Rank
Property Market Values	\$158,641,419	\$339,260	54
Total General M & O Levies	0.003940497		9
Total District Levies	0.004539332		21

Staff Data 2006-07

Personnel:	FTE	ADA To FTE	Teachers Salaries:	Rank
Elementary Teachers	15.28	16	Beginning Salary on Schedule	\$30,000
Secondary Teachers	15.63	16	Highest Salary on Schedule	\$55,052
Administrators	3.50	134	Average Elementary Teacher's Salary	\$50,349 9
Other Certified Staff	2.28	205	Average Secondary Teacher's Salary	\$44,629 38
Total Certified Staff	36.69	13	Average Superintendent's Salary	\$80,000 67
Total Non-Certified Staff	19.67	24		

Note: Rank represents how this district compares to the other public school districts in the State of Idaho; high to low (1 being the highest).



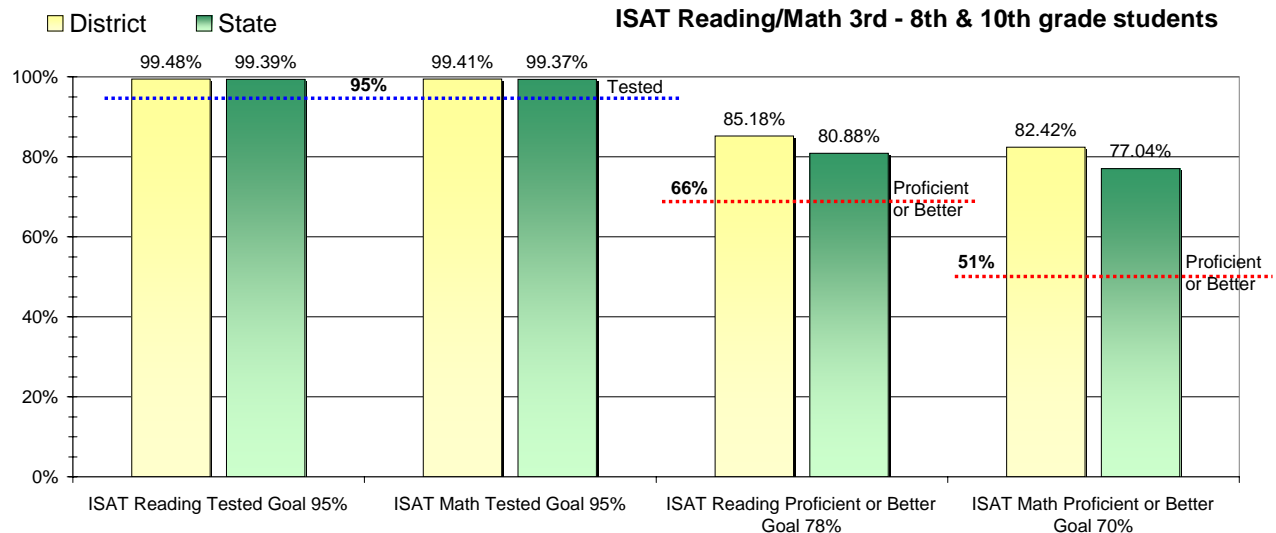
Adequate Yearly Progress and Assessment 2006-07

Did Potlatch District make Adequate yearly progress for 2006-07? No

Percent of the 41 targets that Potlatch District made: 92.68%

The goal in our nation is for all students in grades 3 through 8 and 10 to be proficient in reading and math by the spring of 2014. Idaho uses the Idaho Standards Achievement Test (ISAT) and the Idaho Alternate Assessment (IAA) to measure proficiency. This report shows the percentage of students who met state goals for proficiency in reading and math.

More Information is available at: <http://www.sde.state.id.us/AYP/Ayp07/default.asp>



To protect the privacy of individual students the following symbols are used.

^ No participation determinations are made for groups of less than 10 students. The participation rate of students in this group is included in district and state totals.

~ No proficiency determinations are made for groups of less than 34 students. The proficiency level of students in this group is included in district and state totals

3rd Indicator - Graduation Rate		
2005	2006	Goal
97.44%	100%	Met