

Whitepine Jt School District #288

Latah County
 502 First Ave, PO Box 249, Deary, ID 83823
 Phone: (208) 877-1408 Fax: (208) 877-1570
 Daryl Bertelsen, Superintendent

District Characteristics 2006-07

Fall Enrollment	278	Special Education:	
Average Daily Attendance.....	260	Special Education Students.....	36
State Ranking Per ADA.....	102	Gifted and Talented Students.....	0
Number of Schools (sites):		Number of LEP Students**.....	0
Elementary.....	2	National School Lunch Program:	
Secondary.....	1	Average Daily Participation.....	162
Number of Accredited Schools:		Free and Reduced Meals.....	88
Approved.....	2	Lunch Price - Elementary.....	\$1.75
Approved with Merit.....	0	Lunch Price - Secondary.....	\$2.25
Approved with Comment.....	0	Pupil Transportation Program:	
Not Approved.....	0	Average Daily Ridership 2005-06	164
High School Diplomas Regular.....	17	District Owned Operation	
Other Completions*	0	* Certificates of Completion issued by the district	
Graduation Completion Rate...	95%	** Limited English Proficient (LEP)	

Highlights

No Data Submitted

Progress Towards Meeting Goals

2006-07 Goals

Progress

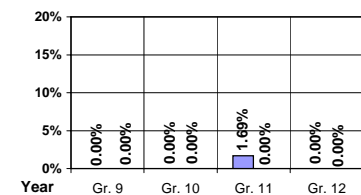
No Data Submitted

Student Profiles

Ethnicity

Race	Male	Female	Total
White	53.23%	39.93%	93.16%
Black	0.72%	0.36%	1.08%
Hispanic	1.44%	0.36%	1.80%
Nat. Amer.	1.44%	0.00%	1.44%
Asian/Pac	0.72%	1.80%	2.52%
Total	57.55%	42.45%	100.00%

Dropouts



Financial Information 2006-07

	M & O Fund	%	All Funds	%
Revenues:				
Local Taxes	\$427,851	16.07%	\$782,682	21.98%
Other Sources	168,371	6.33%	232,019	6.52%
State	2,065,128	77.60%	2,161,105	60.69%
Federal	0	0.00%	385,266	10.81%
Total	\$2,661,350	100.00%	\$3,561,072	100.00%

Supplemental Information

Property and Agricultural Equipment Replacement Taxes.....	\$3,606
Lottery Revenues.....	\$12,310
Technology Grant.....	\$29,573

Expenditures:	Total	%	ADA	Rank
M & O Instruction	\$1,426,344	52.08%		
M & O Support Services	1,191,197	43.49%		
M & O Other	121,223	4.43%		
Total M & O	\$2,738,764	100.00%	\$10,539	16
Total All Funds	\$3,680,960	100.00%	\$14,165	17

Tax Levies 9-1-2006

	Total	Per ADA	Rank
Property Market Values	\$137,085,237	\$527,515	31
Total General M & O Levies	0.002917265		13
Total District Levies	0.005373897		12

Staff Data 2006-07

Personnel:	FTE	ADA To FTE	Teachers Salaries:	Rank
Elementary Teachers	9.66	14	Beginning Salary on Schedule	\$30,000
Secondary Teachers	12.84	11	Highest Salary on Schedule	\$52,465
Administrators	2.50	104	Average Elementary Teacher's Salary	\$41,752 61
Other Certified Staff	1.00	260	Average Secondary Teacher's Salary	\$47,900 18
Total Certified Staff	26.00	10	Average Superintendent's Salary	\$45,000 127
Total Non-Certified Staff	19.37	13		

Note: Rank represents how this district compares to the other public school districts in the State of Idaho; high to low (1 being the highest).



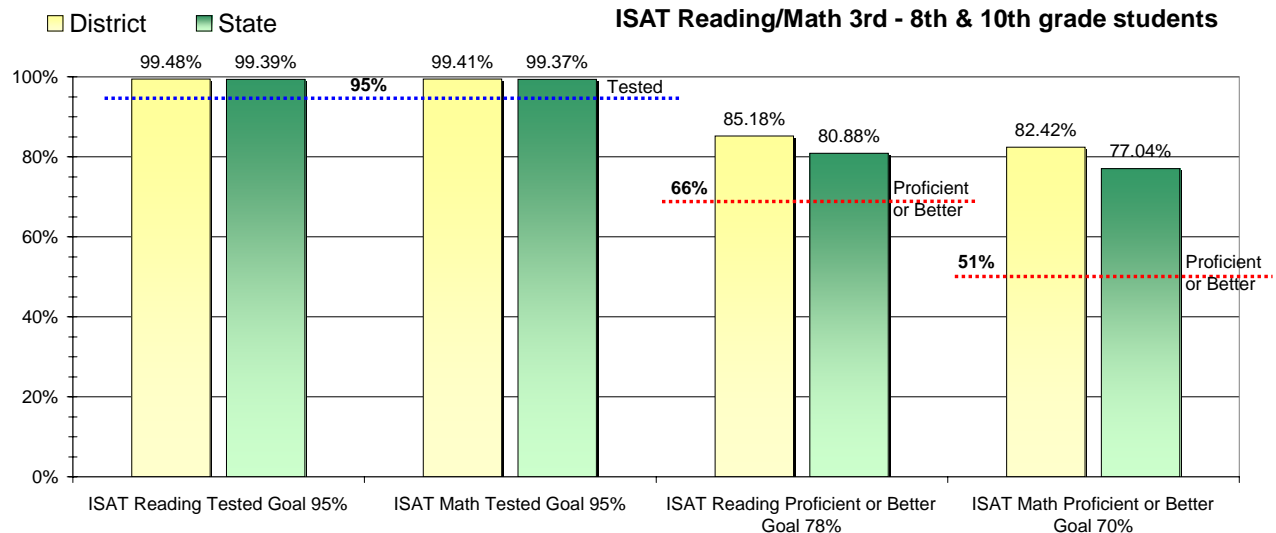
Adequate Yearly Progress and Assessment 2006-07

Did Whitepine Jt School District make Adequate yearly progress for 2006-07? No

Percent of the 41 targets that Whitepine Jt School District made: 95.12%

The goal in our nation is for all students in grades 3 through 8 and 10 to be proficient in reading and math by the spring of 2014. Idaho uses the Idaho Standards Achievement Test (ISAT) and the Idaho Alternate Assessment (IAA) to measure proficiency. This report shows the percentage of students who met state goals for proficiency in reading and math.

More Information is available at: <http://www.sde.state.id.us/AYP/Ayp07/default.asp>



To Protect the privacy of individual students the following symbols are used.

^No participation determinations are made for groups of less than 10 students. The participation rate of students in this group is included in district and state totals.

~ No proficiency determinations are made for groups of less than 34 students. The proficiency level of students in this group is included in district and state totals

3rd Indicator - Graduation Rate

2005	2006	Goal
86.11%	96.55%	Met