

# Lewiston Independent District #340

Nez Perce County  
 3317 12th St, Lewiston, ID 83501  
 Phone: (208) 748-3000 Fax: (208) 748-3059  
 Dr. Joy C. Rapp, Superintendent

## District Characteristics 2006-07

Fall Enrollment .....	5,015	Special Education:	
Average Daily Attendance.....	4,689	Special Education Students.....	594
State Ranking Per ADA.....	13	Gifted and Talented Students.....	343
Number of Schools (sites):		Number of LEP Students**.....	10
Elementary.....	7	National School Lunch Program:	
Secondary.....	6	Average Daily Participation.....	3,219
Number of Accredited Schools:		Free and Reduced Meals.....	1,523
Approved.....	10	Lunch Price - Elementary.....	\$1.55
Approved with Merit.....	0	Lunch Price - Secondary.....	\$1.80
Approved with Comment.....	0	Pupil Transportation Program:	
Not Approved.....	0	Average Daily Ridership 2005-06	1,381
High School Diplomas Regular.....	375	District Owned Operation	
Other Completions* .....	0	* Certificates of Completion issued by the district	
Graduation Completion Rate...	90%	** Limited English Proficient (LEP)	

## Highlights

The District's Mission to Strive, Achieve, Succeed, and Go Beyond was evident throughout the school system. Teams of teachers worked together to set SMART goals based on classroom data and summative assessments. Goals were aligned with the District's Strategic Plan. Interventions were implemented that allowed students to make progress towards achievement of the goals established for each grade level. With the change in test vendors and content of the Idaho Standards Achievement Test, teachers worked to align the curriculum with the new test and content standards. This was especially critical in the area of language usage. Students also participated in a number of community services projects. *Fill the Bus* was a response to the need of the community for food products during the holiday season. Funds were raised Katrina relief, books were sent to a school ravaged by a tornado and high school students crocheted scarves, gloves and hats to augment *Coats for Families* in November. The Youth Volunteer Program membership increase from 148 students in 2004-2005 to 253 students in 2006-2007. Parents gave the schools an overall satisfaction rating of 4.24 on a five-point scale. Highlights from the survey included response regarding school safety, respect for teachers and administrators as well as satisfaction with the educational opportunities at each school.

## Progress Towards Meeting Goals

### 2006-07 Goals

### Progress

Ninety percent of students scoring proficient or advanced at their grade level by spring 2008 - Writing

Grade 10 students were at 87% on spring 2006 ISAT. The change in the Language Usage test in spring 2007 resulted in 66% proficient or advanced.

Ninety percent of students scoring proficient or advanced at their grade level by spring 2008 - Reading

Grade 10 students were at 88% on the spring 2006 ISAT and at 84% proficient or advanced on the spring 2007 ISAT.

Ninety percent of students scoring proficient or advanced a their grade level by spring 2008 - Mathematics

Grade 10 students were at 83% on the spring 2006 ISAT and at 82% proficient or advanced on the spring 2007 ISAT.

Increase graduation rate

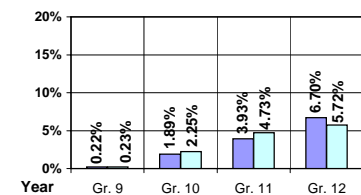
Over the last the four years the graduation rate has increased from 83.7% to 90.29%.

## Student Profiles

### Ethnicity

Race	Male	Female	Total
White	47.69%	43.87%	91.56%
Black	0.40%	0.48%	0.88%
Hispanic	1.38%	1.00%	2.38%
Nat. Amer.	1.81%	1.79%	3.60%
Asian/Pac	0.72%	0.86%	1.58%
Total	52.00%	48.00%	100.00%

## Dropouts



Year	Gr. 9	Gr. 10	Gr. 11	Gr. 12
05-06	1	8	16	27
06-07	1	10	19	23

### Financial Information 2006-07

	M & O Fund	%	All Funds	%
<b>Revenues:</b>				
Local Taxes	\$10,185,144	28.92%	\$10,185,144	24.43%
Other Sources	667,817	1.90%	4,002,035	9.60%
State	24,359,039	69.18%	24,652,820	59.13%
Federal	0	0.00%	2,854,085	6.84%
<b>Total</b>	<b>\$35,212,000</b>	<b>100.00%</b>	<b>\$41,694,084</b>	<b>100.00%</b>

#### Supplemental Information

Property and Agricultural Equipment Replacement Taxes.....	\$13,213
Lottery Revenues.....	\$218,788
Technology Grant.....	\$145,945

Expenditures:	Total	%	ADA	Rank
M & O Instruction	\$22,068,615	62.59%		
M & O Support Services	13,129,274	37.23%		
M & O Other	62,807	0.18%		
<b>Total M &amp; O</b>	<b>\$35,260,696</b>	<b>100.00%</b>	<b>\$7,520</b>	<b>49</b>
<b>Total All Funds</b>	<b>\$40,877,807</b>	<b>100.00%</b>	<b>\$8,717</b>	<b>77</b>

#### Tax Levies 9-1-2006

	Total	Per ADA	Rank
Property Market Values	\$1,872,385,308	\$399,299	46
Total General M & O Levies	0.005302977		6
Total District Levies	0.005302977		13

### Staff Data 2006-07

Personnel:	FTE	ADA To FTE	Teachers Salaries:	Rank
Elementary Teachers	143.43	17	Beginning Salary on Schedule	\$30,000
Secondary Teachers	145.87	16	Highest Salary on Schedule	\$55,796
Administrators	22.51	208	Average Elementary Teacher's Salary	\$47,515 16
Other Certified Staff	29.60	158	Average Secondary Teacher's Salary	\$49,865 10
Total Certified Staff	341.41	14	Average Superintendent's Salary	\$104,859 12
Total Non-Certified Staff	213.25	22		

Note: Rank represents how this district compares to the other public school districts in the State of Idaho; high to low (1 being the highest).



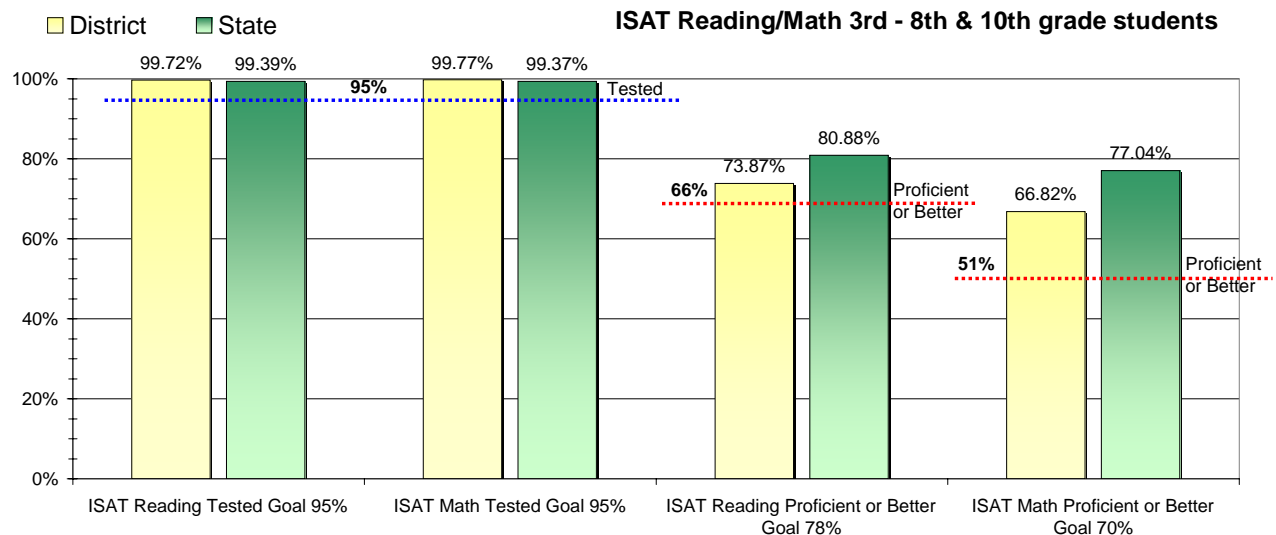
### Adequate Yearly Progress and Assessment 2006-07

Did Lewiston Independent District make Adequate yearly progress for 2006-07? No

Percent of the 41 targets that Lewiston Independent District made: 92.68%

The goal in our nation is for all students in grades 3 through 8 and 10 to be proficient in reading and math by the spring of 2014. Idaho uses the Idaho Standards Achievement Test (ISAT) and the Idaho Alternate Assessment (IAA) to measure proficiency. This report shows the percentage of students who met state goals for proficiency in reading and math.

More Information is available at: <http://www.sde.state.id.us/AYP/Ayp07/default.asp>



To Protect the privacy of individual students the following symbols are used.

^No participation determinations are made for groups of less than 10 students. The participation rate of students in this group is included in district and state totals.

~ No proficiency determinations are made for groups of less than 34 students. The proficiency level of students in this group is included in district and state totals

#### 3rd Indicator - Graduation Rate

2005	2006	Goal
85.44%	87.59%	Met