

Bruneau-Grand View Jt Dist #365

Owyhee County
 660 Boise Ave, PO Box 310, Grand View, ID 83624
 Phone: (208) 834-2253 Fax: (208) 834-2293
 Vickie L. Chandler, Superintendent

District Characteristics 2006-07

Fall Enrollment	448	Special Education:	
Average Daily Attendance.....	398	Special Education Students.....	40
State Ranking Per ADA.....	85	Gifted and Talented Students.....	0
Number of Schools (sites):		Number of LEP Students**.....	78
Elementary.....	2	National School Lunch Program:	
Secondary.....	1	Average Daily Participation.....	341
Number of Accredited Schools:		Free and Reduced Meals.....	225
Approved.....	3	Lunch Price - Elementary.....	\$1.25
Approved with Merit.....	0	Lunch Price - Secondary.....	\$1.50
Approved with Comment.....	0	Pupil Transportation Program:	
Not Approved.....	0	Average Daily Ridership 2005-06	228
High School Diplomas Regular.....	29	District Owned Operation	
Other Completions*	0	* Certificates of Completion issued by the district	
Graduation Completion Rate...	96%	** Limited English Proficient (LEP)	

Highlights

No Data Submitted

Progress Towards Meeting Goals

2006-07 Goals

Progress

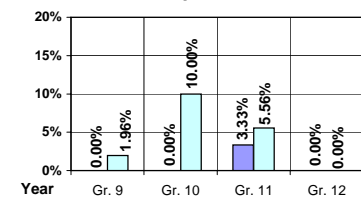
No Data Submitted

Student Profiles

Ethnicity

Race	Male	Female	Total
White	32.37%	29.02%	61.39%
Black	0.00%	0.00%	0.00%
Hispanic	16.07%	10.04%	26.11%
Nat. Amer.	6.92%	5.58%	12.50%
Asian/Pac	0.00%	0.00%	0.00%
Total	55.36%	44.64%	100.00%

Dropouts



Year	Gr. 9	Gr. 10	Gr. 11	Gr. 12
05-06	0	0	1	0
06-07	1	3	2	0

Financial Information 2006-07

	M & O Fund	%	All Funds	%
Revenues:				
Local Taxes	\$24,329	0.68%	\$233,966	5.19%
Other Sources	254,744	7.12%	332,924	7.39%
State	3,165,405	88.50%	3,288,257	72.96%
Federal	132,224	3.70%	651,567	14.46%
Total	\$3,576,702	100.00%	\$4,506,714	100.00%

Supplemental Information

Property and Agricultural Equipment Replacement Taxes.....	\$64,199
Lottery Revenues.....	\$16,144
Technology Grant.....	\$32,318

Expenditures:	Total	%	ADA	Rank
M & O Instruction	\$2,131,791	60.31%		
M & O Support Services	1,389,687	39.32%		
M & O Other	13,216	0.37%		
Total M & O	\$3,534,694	100.00%	\$8,890	28
Total All Funds	\$4,540,818	100.00%	\$11,420	37

Tax Levies 9-1-2006	Total	Per ADA	Rank
Property Market Values	\$155,675,897	\$391,529	49
Total General M & O Levies	0.000388788		75
Total District Levies	0.001951316		79

Staff Data 2006-07

Personnel:	FTE	ADA To FTE	Teachers Salaries:	Rank
Elementary Teachers	11.49	21	Beginning Salary on Schedule	\$30,000
Secondary Teachers	17.68	11	Highest Salary on Schedule	\$45,940
Administrators	3.33	119	Average Elementary Teacher's Salary	\$36,758 120
Other Certified Staff	1.00	398	Average Secondary Teacher's Salary	\$43,093 59
Total Certified Staff	33.50	12	Average Superintendent's Salary	\$75,000 87
Total Non-Certified Staff	28.44	14		

Note: Rank represents how this district compares to the other public school districts in the State of Idaho; high to low (1 being the highest).



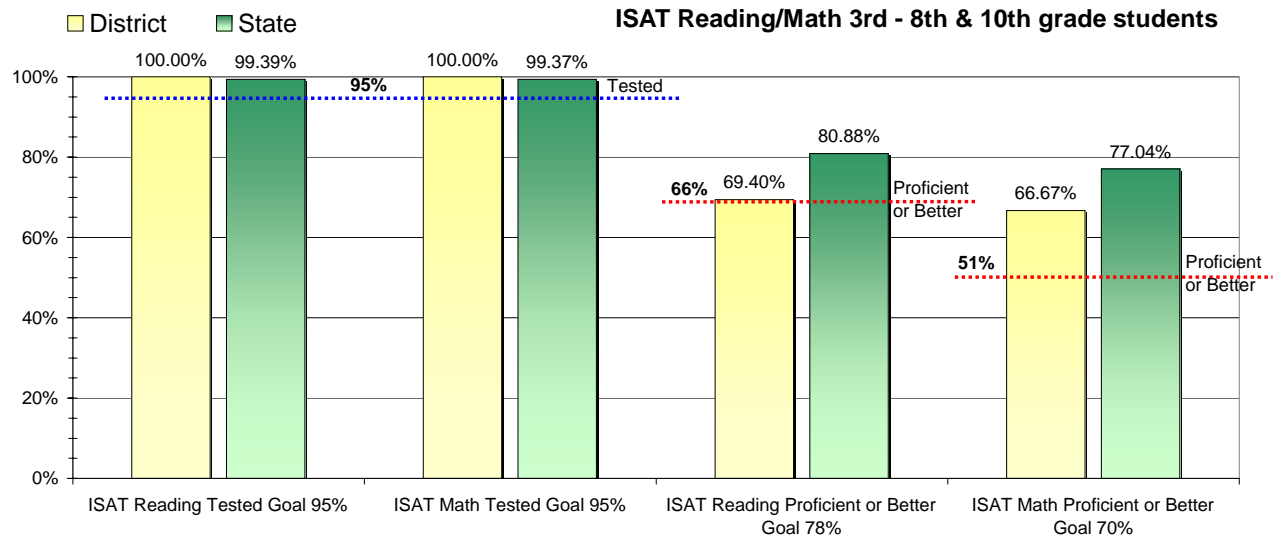
Adequate Yearly Progress and Assessment 2006-07

Did Bruneau-Grand View Jt Dist make Adequate yearly progress for 2006-07? No

Percent of the 41 targets that Bruneau-Grand View Jt Dist made: 80.49%

The goal in our nation is for all students in grades 3 through 8 and 10 to be proficient in reading and math by the spring of 2014. Idaho uses the Idaho Standards Achievement Test (ISAT) and the Idaho Alternate Assessment (IAA) to measure proficiency. This report shows the percentage of students who met state goals for proficiency in reading and math.

More Information is available at: <http://www.sde.state.id.us/AYP/Ayp07/default.asp>



To Protect the privacy of individual students the following symbols are used.

^No participation determinations are made for groups of less than 10 students. The participation rate of students in this group is included in district and state totals.

- No proficiency determinations are made for groups of less than 34 students. The proficiency level of students in this group is included in district and state totals

3rd Indicator - Graduation Rate		
2005	2006	Goal
96.55%	90%	Met