

Homedale Jt District #370

Owyhee County
 116 E Owyhee Ave, Homedale, ID 83628
 Phone: (208) 337-4611 Fax: (208) 337-4911
 Tim Rosandick, Superintendent

District Characteristics 2006-07

Fall Enrollment	1,281	Special Education:	
Average Daily Attendance.....	1,245	Special Education Students.....	95
State Ranking Per ADA.....	43	Gifted and Talented Students.....	74
Number of Schools (sites):		Number of LEP Students**.....	151
Elementary.....	1	National School Lunch Program:	
Secondary.....	4	Average Daily Participation.....	913
Number of Accredited Schools:		Free and Reduced Meals.....	769
Approved.....	4	Lunch Price - Elementary.....	\$1.20
Approved with Merit.....	0	Lunch Price - Secondary.....	\$1.45
Approved with Comment.....	0	Pupil Transportation Program:	
Not Approved.....	0	Average Daily Ridership 2005-06	618
High School Diplomas Regular.....	93	District Owned Operation	
Other Completions*	0	* Certificates of Completion issued by the district	
Graduation Completion Rate...	96%	** Limited English Proficient (LEP)	

Highlights

Our program towards making all schools work jointly to address core curricular needs for all grades is progressing. We are working to meet transition needs between the middle school and the high school. As a part of this joint effort, our district has completed application for Title 1 Schoolwide designation. This will allow for better use of funding in our goals to assist students.

Our Middle School and High School raised their Math scores on the 2006 ISAT assessment, and our DWA scoring averages meet or exceed the State averages, reflecting the hard work of our teachers. We continue to push for high achievement in reading, language, and math. Dual credit classes have been added this year at Homedale High School in order to offer higher level and more challenging opportunities for advanced students.

We are proud of the work in our district and will continue our goals toward success for all students.

Progress Towards Meeting Goals

2006-07 Goals

Progress

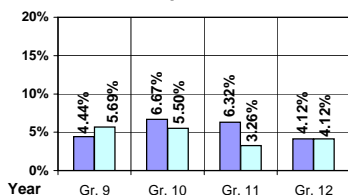
High School will meet AYP for Math	Goal met
Middle School will meet AYP for Math	Goal met
Middle School will meet AYP for Reading	Scores improved, but more work needed
Complete CIP Plans for all schools	Plans completed
Complete application for Schoolwide T-1	Application was completed and submitted for approval.

Student Profiles

Ethnicity

Race	Male	Female	Total
White	30.83%	28.73%	59.56%
Black	0.31%	0.08%	0.39%
Hispanic	20.37%	18.35%	38.72%
Nat. Amer.	0.16%	0.39%	0.55%
Asian/Pac	0.39%	0.39%	0.78%
Total	52.06%	47.94%	100.00%

Dropouts



Year	Gr. 9	Gr. 10	Gr. 11	Gr. 12
05-06	6	6	6	4
06-07	7	6	3	4

Financial Information 2006-07

	M & O Fund	%	All Funds	%
Revenues:				
Local Taxes	\$213,563	2.98%	\$745,127	8.03%
Other Sources	157,493	2.20%	293,512	3.16%
State	6,785,721	94.82%	7,032,010	75.75%
Federal	0	0.00%	1,212,043	13.06%
Total	\$7,156,777	100.00%	\$9,282,692	100.00%

Supplemental Information

Property and Agricultural Equipment Replacement Taxes.....	\$26,760
Lottery Revenues.....	\$57,168
Technology Grant.....	\$55,200

Expenditures:	Total	%	ADA	Rank
M & O Instruction	\$4,622,408	64.47%		
M & O Support Services	2,535,380	35.36%		
M & O Other	12,399	0.17%		
Total M & O	\$7,170,187	100.00%	\$5,761	99
Total All Funds	\$9,450,730	100.00%	\$7,593	107

Tax Levies 9-1-2006	Total	Per ADA	Rank
Property Market Values	\$186,863,250	\$150,137	108
Total General M & O Levies	0.000879542		51
Total District Levies	0.003731654		40

Staff Data 2006-07

Personnel:	FTE	ADA To FTE	Teachers Salaries:	Rank
Elementary Teachers	36.33	18	Beginning Salary on Schedule	\$30,000
Secondary Teachers	43.57	14	Highest Salary on Schedule	\$49,077
Administrators	7.07	176	Average Elementary Teacher's Salary	\$41,731 62
Other Certified Staff	6.78	184	Average Secondary Teacher's Salary	\$41,101 88
Total Certified Staff	93.75	13	Average Superintendent's Salary	\$93,840 30
Total Non-Certified Staff	54.23	23		

Note: Rank represents how this district compares to the other public school districts in the State of Idaho; high to low (1 being the highest).



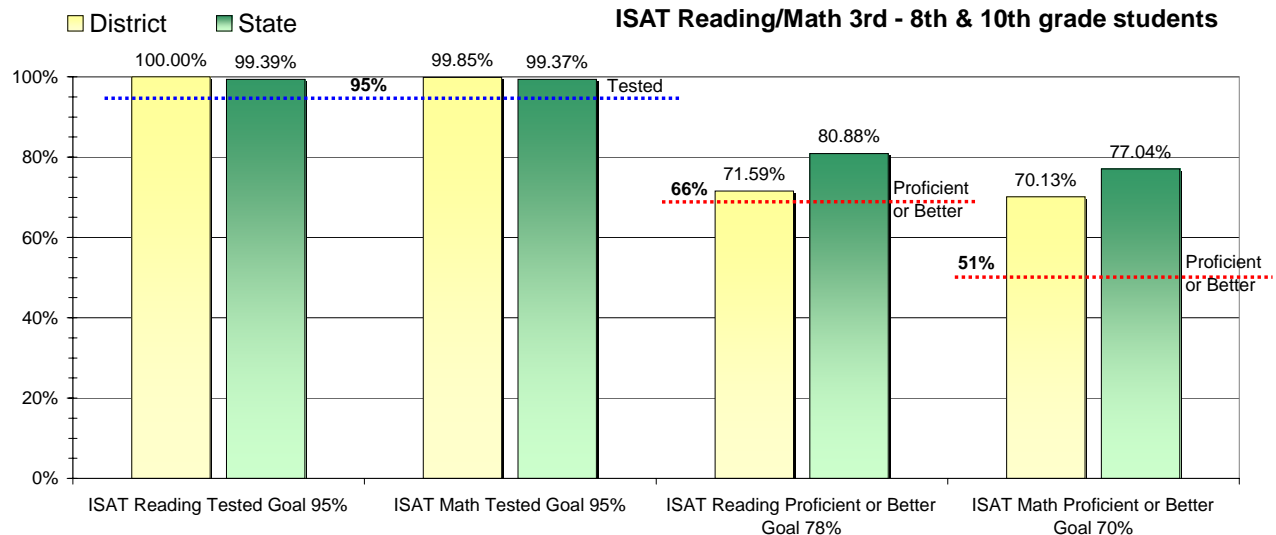
Adequate Yearly Progress and Assessment 2006-07

Did Homedale Jt District make Adequate yearly progress for 2006-07? No

Percent of the 41 targets that Homedale Jt District made: 82.93%

The goal in our nation is for all students in grades 3 through 8 and 10 to be proficient in reading and math by the spring of 2014. Idaho uses the Idaho Standards Achievement Test (ISAT) and the Idaho Alternate Assessment (IAA) to measure proficiency. This report shows the percentage of students who met state goals for proficiency in reading and math.

More Information is available at: <http://www.sde.state.id.us/AYP/Ayp07/default.asp>



To Protect the privacy of individual students the following symbols are used.

^ No participation determinations are made for groups of less than 10 students. The participation rate of students in this group is included in district and state totals.

~ No proficiency determinations are made for groups of less than 34 students. The proficiency level of students in this group is included in district and state totals

3rd Indicator - Graduation Rate		
2005	2006	Goal
86.3%	90.67%	Met