

Payette Jt District #371

Payette County
 20 N 12th St, Payette, ID 83661
 Phone: (208) 642-9366 Fax: (208) 642-9006
 Pauline King, Superintendent

District Characteristics 2006-07			
Fall Enrollment	1,820	Special Education:	
Average Daily Attendance.....	1,700	Special Education Students.....	171
State Ranking Per ADA.....	32	Gifted and Talented Students.....	284
Number of Schools (sites):		Number of LEP Students**.....	111
Elementary.....	2	National School Lunch Program:	
Secondary.....	3	Average Daily Participation.....	1,163
Number of Accredited Schools:		Free and Reduced Meals.....	946
Approved.....	3	Lunch Price - Elementary.....	\$0.95
Approved with Merit.....	0	Lunch Price - Secondary.....	\$1.05
Approved with Comment.....	1	Pupil Transportation Program:	
Not Approved.....	0	Average Daily Ridership 2005-06	795
High School Diplomas Regular.....	118	District Owned Operation	
Other Completions*	0	* Certificates of Completion issued by the district	
Graduation Completion Rate...	99%	** Limited English Proficient (LEP)	

Highlights

No Data Submitted

Progress Towards Meeting Goals

2006-07 Goals

Progress

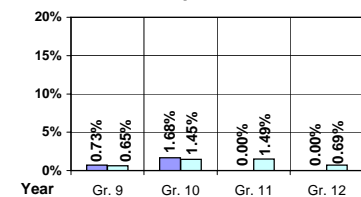
No Data Submitted

Student Profiles

Ethnicity

Race	Male	Female	Total
White	38.31%	35.27%	73.58%
Black	0.22%	0.11%	0.33%
Hispanic	12.69%	11.43%	24.12%
Nat. Amer.	0.38%	0.33%	0.71%
Asian/Pac	0.55%	0.71%	1.26%
Total	52.15%	47.85%	100.00%

Dropouts



Year	Gr. 9	Gr. 10	Gr. 11	Gr. 12
05-06	1	2	0	0
06-07	1	2	2	1

Financial Information 2006-07

	M & O Fund	%	All Funds	%
Revenues:				
Local Taxes	\$76,303	0.84%	\$865,419	6.73%
Other Sources	140,050	1.54%	601,469	4.68%
State	8,899,829	97.59%	9,548,538	74.30%
Federal	3,000	0.03%	1,835,374	14.29%
Total	\$9,119,182	100.00%	\$12,850,800	100.00%

Supplemental Information

Property and Agricultural Equipment Replacement Taxes.....	\$10,954
Lottery Revenues.....	\$78,412
Technology Grant.....	\$67,090

Expenditures:	Total	%	ADA	Rank
M & O Instruction	\$5,773,097	61.93%		
M & O Support Services	3,363,230	36.08%		
M & O Other	186,303	1.99%		
Total M & O	\$9,322,630	100.00%	\$5,483	110
Total All Funds	\$12,763,619	100.00%	\$7,507	109

Tax Levies 9-1-2006

	Total	Per ADA	Rank
Property Market Values	\$292,134,033	\$171,824	103
Total General M & O Levies	0.000094813		83
Total District Levies	0.002759436		61

Staff Data 2006-07

Personnel:	FTE	ADA To FTE	Teachers Salaries:	Rank
Elementary Teachers	49.97	19	Beginning Salary on Schedule	\$30,000
Secondary Teachers	47.79	18	Highest Salary on Schedule	\$52,285
Administrators	9.00	189	Average Elementary Teacher's Salary	\$42,368 53
Other Certified Staff	8.78	194	Average Secondary Teacher's Salary	\$43,257 58
Total Certified Staff	115.54	15	Average Superintendent's Salary	\$85,000 49
Total Non-Certified Staff	60.89	28		

Note: Rank represents how this district compares to the other public school districts in the State of Idaho; high to low (1 being the highest).



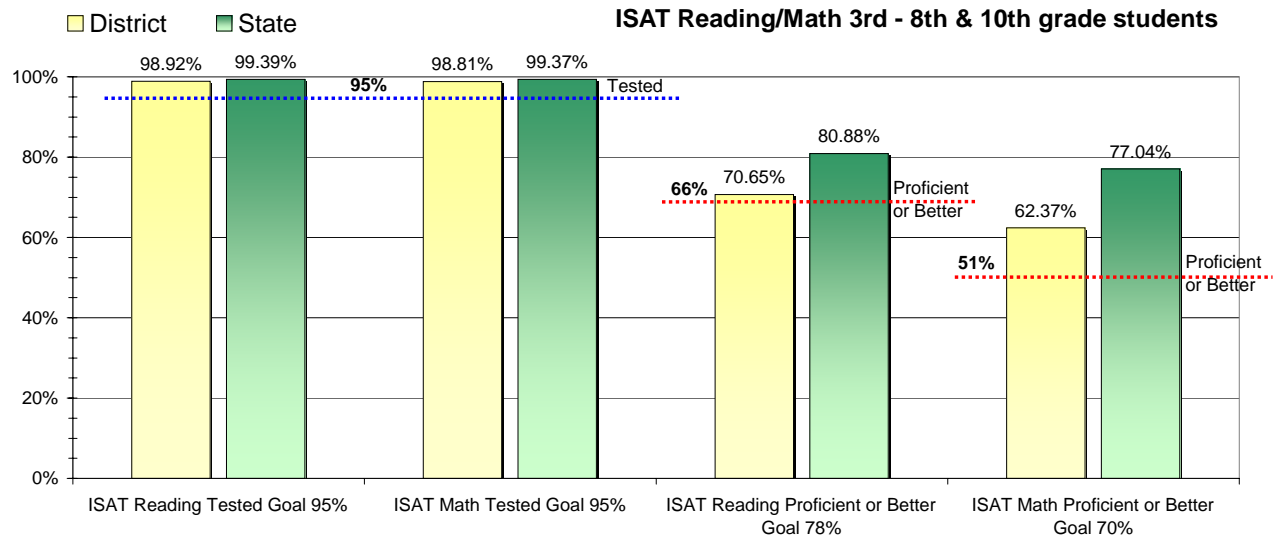
Adequate Yearly Progress and Assessment 2006-07

Did Payette Jt District make Adequate yearly progress for 2006-07? No

Percent of the 41 targets that Payette Jt District made: 70.73%

The goal in our nation is for all students in grades 3 through 8 and 10 to be proficient in reading and math by the spring of 2014. Idaho uses the Idaho Standards Achievement Test (ISAT) and the Idaho Alternate Assessment (IAA) to measure proficiency. This report shows the percentage of students who met state goals for proficiency in reading and math.

More Information is available at: <http://www.sde.state.id.us/AYP/Ayp07/default.asp>



To Protect the privacy of individual students the following symbols are used.

^No participation determinations are made for groups of less than 10 students. The participation rate of students in this group is included in district and state totals.

- No proficiency determinations are made for groups of less than 34 students. The proficiency level of students in this group is included in district and state totals

3rd Indicator - Graduation Rate		
2005	2006	Goal
87.7%	98.4%	Met