

Fruitland District #373

Payette County
 303 SW 3rd St, PO Box A, Fruitland, ID 83619
 Phone: (208) 452-3595 Fax: (208) 452-6430
 Alan Felgenhauer, Superintendent

District Characteristics 2006-07			
Fall Enrollment	1,752	Special Education:	
Average Daily Attendance.....	1,687	Special Education Students.....	185
State Ranking Per ADA.....	33	Gifted and Talented Students.....	216
Number of Schools (sites):		Number of LEP Students**.....	94
Elementary.....	1	National School Lunch Program:	
Secondary.....	2	Average Daily Participation.....	1,080
Number of Accredited Schools:		Free and Reduced Meals.....	740
Approved.....	3	Lunch Price - Elementary.....	\$1.10
Approved with Merit.....	0	Lunch Price - Secondary.....	\$1.25
Approved with Comment.....	0	Pupil Transportation Program:	
Not Approved.....	0	Average Daily Ridership 2005-06	591
High School Diplomas Regular.....	106	District Owned Operation	
Other Completions*	0		
Graduation Completion Rate...	95%	* Certificates of Completion issued by the district	
		** Limited English Proficient (LEP)	

Highlights

No Data Submitted

Progress Towards Meeting Goals

2006-07 Goals

Progress

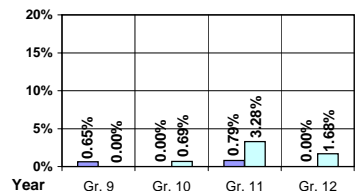
No Data Submitted

Student Profiles

Ethnicity

Race	Male	Female	Total
White	40.98%	37.33%	78.31%
Black	0.34%	0.29%	0.63%
Hispanic	10.10%	9.25%	19.35%
Nat. Amer.	0.06%	0.29%	0.35%
Asian/Pac	0.74%	0.62%	1.36%
Total	52.22%	47.78%	100.00%

Dropouts



Year	Gr. 9	Gr. 10	Gr. 11	Gr. 12
05-06	1	0	1	0
06-07	0	1	4	2

Financial Information 2006-07

	M & O Fund	%	All Funds	%
Revenues:				
Local Taxes	\$201,568	2.30%	\$1,126,229	7.92%
Other Sources	110,976	1.26%	3,176,170	22.35%
State	8,478,242	96.44%	8,708,740	61.27%
Federal	0	0.00%	1,201,828	8.46%
Total	\$8,790,786	100.00%	\$14,212,967	100.00%

Supplemental Information

Property and Agricultural Equipment Replacement Taxes.....	\$28,229
Lottery Revenues.....	\$73,573
Technology Grant.....	\$65,039

Expenditures:	Total	%	ADA	Rank
M & O Instruction	\$6,218,118	73.35%		
M & O Support Services	2,231,973	26.33%		
M & O Other	26,845	0.32%		
Total M & O	\$8,476,936	100.00%	\$5,024	125
Total All Funds	\$21,331,570	100.00%	\$12,641	29

Tax Levies 9-1-2006	Total	Per ADA	Rank
Property Market Values	\$333,801,784	\$197,814	98
Total General M & O Levies	0.000633613		65
Total District Levies	0.003419697		45

Staff Data 2006-07

Personnel:	FTE	ADA To FTE	Teachers Salaries:	Rank
Elementary Teachers	46.15	21	Beginning Salary on Schedule	\$30,000
Secondary Teachers	46.50	17	Highest Salary on Schedule	\$51,430
Administrators	4.14	408	Average Elementary Teacher's Salary	\$42,569 49
Other Certified Staff	7.00	241	Average Secondary Teacher's Salary	\$45,778 30
Total Certified Staff	103.79	16	Average Superintendent's Salary	\$94,985 27
Total Non-Certified Staff	67.44	25		

Note: Rank represents how this district compares to the other public school districts in the State of Idaho; high to low (1 being the highest).



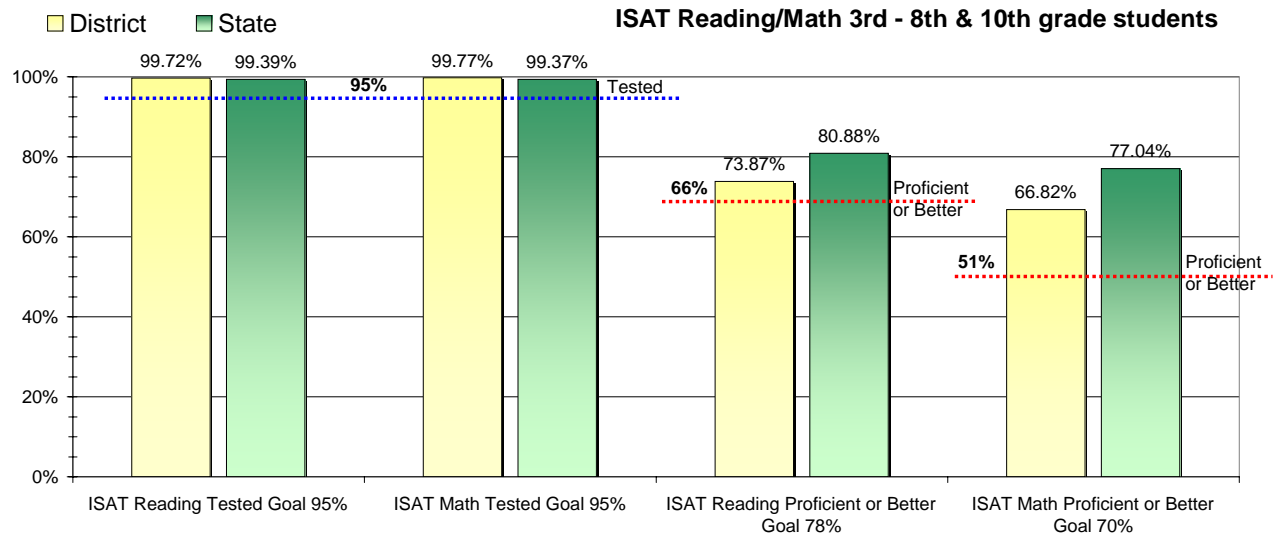
Adequate Yearly Progress and Assessment 2006-07

Did Fruitland District make Adequate yearly progress for 2006-07? No

Percent of the 41 targets that Fruitland District made: 87.8%

The goal in our nation is for all students in grades 3 through 8 and 10 to be proficient in reading and math by the spring of 2014. Idaho uses the Idaho Standards Achievement Test (ISAT) and the Idaho Alternate Assessment (IAA) to measure proficiency. This report shows the percentage of students who met state goals for proficiency in reading and math.

More Information is available at: <http://www.sde.state.id.us/AYP/Ayp07/default.asp>



To Protect the privacy of individual students the following symbols are used.

^ No participation determinations are made for groups of less than 10 students. The participation rate of students in this group is included in district and state totals.

- No proficiency determinations are made for groups of less than 34 students. The proficiency level of students in this group is included in district and state totals

3rd Indicator - Graduation Rate		
2005	2006	Goal
97.7%	96.88%	Met