

Wallace District #393

Shoshone County
 405 7th St, Wallace, ID 83873
 Phone: (208) 753-4515 Fax: (208) 753-4151
 Dr. Robert Ranells, Superintendent

District Characteristics 2006-07			
Fall Enrollment	561	Special Education:	
Average Daily Attendance.....	498	Special Education Students.....	75
State Ranking Per ADA.....	68	Gifted and Talented Students.....	32
Number of Schools (sites):		Number of LEP Students**.....	0
Elementary.....	1	National School Lunch Program:	
Secondary.....	1	Average Daily Participation.....	274
Number of Accredited Schools:		Free and Reduced Meals.....	183
Approved.....	2	Lunch Price - Elementary.....	\$1.55
Approved with Merit.....	0	Lunch Price - Secondary.....	\$1.55
Approved with Comment.....	0	Pupil Transportation Program:	
Not Approved.....	0	Average Daily Ridership 2005-06	271
High School Diplomas Regular.....	46	District Owned Operation	
Other Completions*	0	* Certificates of Completion issued by the district	
Graduation Completion Rate...	100%	** Limited English Proficient (LEP)	

Highlights

We have been working hard this year to implement professional learning committees. Our focus is to improve student learning in everything we do. Our district continues to rebound with the resurgence in mining. Student enrollment has increased this year which has also been a positive trend for us. The first kudo is that we passed the largest override levy ever for our district this spring.

Progress Towards Meeting Goals

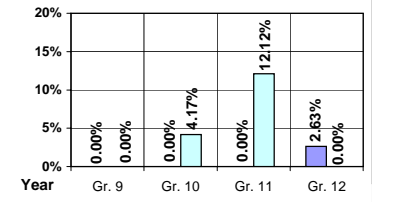
2006-07 Goals	Progress
Staff development focused on Improvement of Student Learning-implementation of Professional Learning Communities.	Ongoing
Transition of three new administrators: superintendent, high school principal and elementary school principal.	Completed July 1, 2007
Working to pass an override levy to maintain financial stability.	Ongoing
Address AYP issues	Ongoing
Develop effective interventions	Ongoing
Begin the process to revise board policy manual.	Ongoing

Student Profiles

Ethnicity

Race	Male	Female	Total
White	53.12%	43.85%	96.97%
Black	0.36%	0.00%	0.36%
Hispanic	0.89%	0.89%	1.78%
Nat. Amer.	0.53%	0.36%	0.89%
Asian/Pac	0.00%	0.00%	0.00%
Total	54.90%	45.10%	100.00%

Dropouts



Financial Information 2006-07

	M & O Fund	%	All Funds	%
Revenues:				
Local Taxes	\$1,167,513	26.66%	\$1,377,683	24.72%
Other Sources	202,111	4.62%	273,335	4.90%
State	3,009,415	68.72%	3,184,256	57.13%
Federal	0	0.00%	738,404	13.25%
Total	\$4,379,039	100.00%	\$5,573,678	100.00%

Supplemental Information

Property and Agricultural Equipment Replacement Taxes.....	\$159
Lottery Revenues.....	\$22,487
Technology Grant.....	\$34,866

Expenditures:	Total	%	ADA	Rank
M & O Instruction	\$2,438,109	56.34%		
M & O Support Services	1,889,115	43.66%		
M & O Other	0	0.00%		
Total M & O	\$4,327,224	100.00%	\$8,695	31
Total All Funds	\$5,392,127	100.00%	\$10,835	44

Tax Levies 9-1-2006	Total	Per ADA	Rank
Property Market Values	\$212,098,448	\$426,200	40
Total General M & O Levies	0.005351289		5
Total District Levies	0.006333588		5

Staff Data 2006-07

Personnel:	FTE	ADA To FTE	Teachers Salaries:	Rank
Elementary Teachers	20.65	13	Beginning Salary on Schedule	\$30,000
Secondary Teachers	19.45	12	Highest Salary on Schedule	\$50,031
Administrators	3.36	148	Average Elementary Teacher's Salary	\$40,197 81
Other Certified Staff	4.65	107	Average Secondary Teacher's Salary	\$44,965 34
Total Certified Staff	48.11	10	Average Superintendent's Salary	\$89,538 38
Total Non-Certified Staff	24.89	20		

Note: Rank represents how this district compares to the other public school districts in the State of Idaho; high to low (1 being the highest).



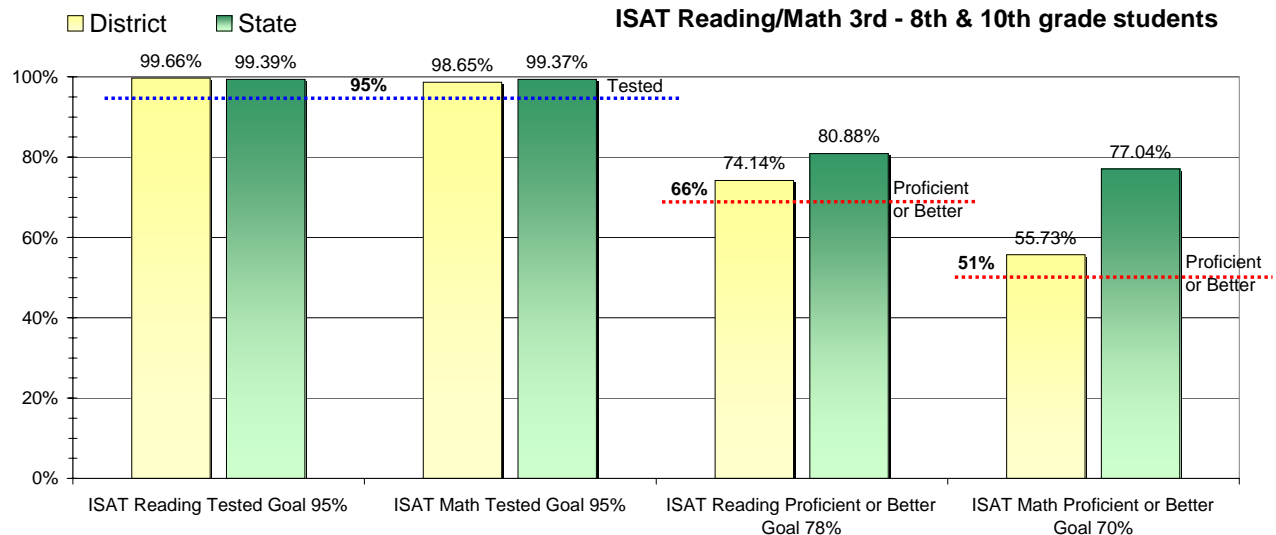
Adequate Yearly Progress and Assessment 2006-07

Did Wallace District make Adequate yearly progress for 2006-07? No

Percent of the 41 targets that Wallace District made: 80.49%

The goal in our nation is for all students in grades 3 through 8 and 10 to be proficient in reading and math by the spring of 2014. Idaho uses the Idaho Standards Achievement Test (ISAT) and the Idaho Alternate Assessment (IAA) to measure proficiency. This report shows the percentage of students who met state goals for proficiency in reading and math.

More Information is available at: <http://www.sde.state.id.us/AYP/Ayp07/default.asp>



To Protect the privacy of individual students the following symbols are used.

^No participation determinations are made for groups of less than 10 students. The participation rate of students in this group is included in district and state totals.

- No proficiency determinations are made for groups of less than 34 students. The proficiency level of students in this group is included in district and state totals

3rd Indicator - Graduation Rate		
2005	2006	Goal
97.06%	92.5%	Met