

McCall-Donnelly District #421

Valley County
 120 Idaho St, McCall, ID 83638
 Phone: (208) 634-2161 Fax: (208) 634-4075
 Dr. Terrey Donicht, Superintendent

District Characteristics 2006-07

Fall Enrollment	1,084	Special Education:	
Average Daily Attendance.....	979	Special Education Students.....	87
State Ranking Per ADA.....	54	Gifted and Talented Students.....	16
Number of Schools (sites):		Number of LEP Students**.....	30
Elementary.....	2	National School Lunch Program:	
Secondary.....	4	Average Daily Participation.....	503
Number of Accredited Schools:		Free and Reduced Meals.....	197
Approved.....	4	Lunch Price - Elementary.....	\$1.45
Approved with Merit.....	0	Lunch Price - Secondary.....	\$1.85
Approved with Comment.....	0	Pupil Transportation Program:	
Not Approved.....	0	Average Daily Ridership 2005-06	400
High School Diplomas Regular.....	65	Contracted Operation	
Other Completions*	0		
Graduation Completion Rate...	97%	* Certificates of Completion issued by the district	
		** Limited English Proficient (LEP)	

Highlights

No Data Submitted

Progress Towards Meeting Goals

2006-07 Goals

Progress

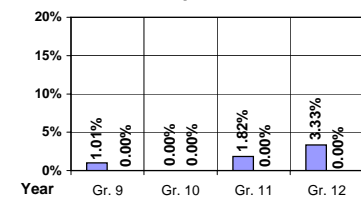
No Data Submitted

Student Profiles

Ethnicity

Race	Male	Female	Total
White	46.79%	45.66%	92.45%
Black	0.28%	0.18%	0.46%
Hispanic	3.04%	2.49%	5.53%
Nat. Amer.	0.55%	0.28%	0.83%
Asian/Pac	0.18%	0.55%	0.73%
Total	50.84%	49.16%	100.00%

Dropouts



Year	Gr. 9	Gr. 10	Gr. 11	Gr. 12
05-06	1	0	2	3
06-07	0	0	0	0

Financial Information 2006-07

	M & O Fund	%	All Funds	%
Revenues:				
Local Taxes	\$5,713,049	47.48%	\$6,360,574	14.40%
Other Sources	305,726	2.54%	30,550,337	69.18%
State	6,004,246	49.90%	6,145,383	13.92%
Federal	9,249	0.08%	1,105,831	2.50%
Total	\$12,032,270	100.00%	\$44,162,125	100.00%

Supplemental Information

Property and Agricultural Equipment Replacement Taxes.....	\$4,733
Lottery Revenues.....	\$44,741
Technology Grant.....	\$48,376

Expenditures:	Total	%	ADA	Rank
M & O Instruction	\$5,373,588	58.91%		
M & O Support Services	3,700,190	40.56%		
M & O Other	48,243	0.53%		
Total M & O	\$9,122,021	100.00%	\$9,313	24
Total All Funds	\$13,688,124	100.00%	\$13,975	18

Tax Levies 9-1-2006	Total	Per ADA	Rank
Property Market Values	\$3,410,443,217	\$3,481,998	3
Total General M & O Levies	0.001671977		33
Total District Levies	0.001844362		85

Staff Data 2006-07

Personnel:	FTE	ADA To FTE	Teachers Salaries:	Rank
Elementary Teachers	33.56	15	Beginning Salary on Schedule	\$30,000
Secondary Teachers	39.88	13	Highest Salary on Schedule	\$56,822
Administrators	5.80	169	Average Elementary Teacher's Salary	\$49,440 11
Other Certified Staff	5.48	179	Average Secondary Teacher's Salary	\$49,574 11
Total Certified Staff	84.72	12	Average Superintendent's Salary	\$86,032 42
Total Non-Certified Staff	39.55	25		

Note: Rank represents how this district compares to the other public school districts in the State of Idaho; high to low (1 being the highest).



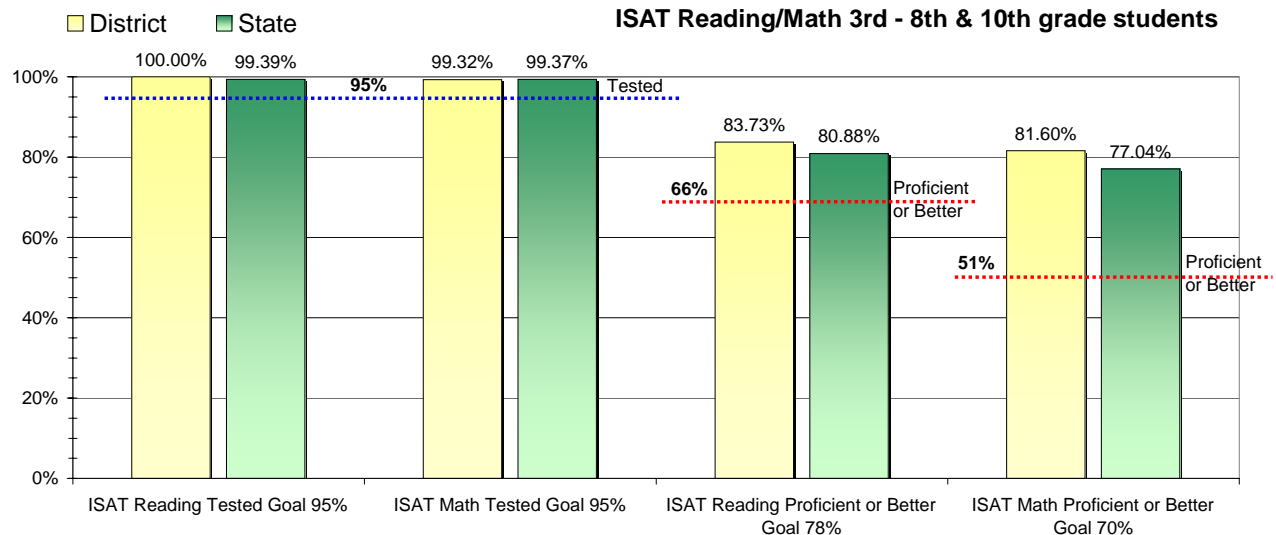
Adequate Yearly Progress and Assessment 2006-07

Did McCall-Donnelly District make Adequate yearly progress for 2006-07? No

Percent of the 41 targets that McCall-Donnelly District made: 92.68%

The goal in our nation is for all students in grades 3 through 8 and 10 to be proficient in reading and math by the spring of 2014. Idaho uses the Idaho Standards Achievement Test (ISAT) and the Idaho Alternate Assessment (IAA) to measure proficiency. This report shows the percentage of students who met state goals for proficiency in reading and math.

More Information is available at: <http://www.sde.state.id.us/AYP/Ayp07/default.asp>



To Protect the privacy of individual students the following symbols are used.

^ No participation determinations are made for groups of less than 10 students. The participation rate of students in this group is included in district and state totals.

~ No proficiency determinations are made for groups of less than 34 students. The proficiency level of students in this group is included in district and state totals

3rd Indicator - Graduation Rate		
2005	2006	Goal
89.01%	95.18%	Met