

Cascade District #422

Valley County
 209 School St, PO Box 291, Cascade, ID 83611
 Phone: (208) 382-4227 Fax: (208) 382-3797
 Elsie E. Krause, Superintendent

District Characteristics 2006-07

Fall Enrollment	379	Special Education:	
Average Daily Attendance.....	331	Special Education Students.....	66
State Ranking Per ADA.....	87	Gifted and Talented Students.....	5
Number of Schools (sites):		Number of LEP Students**.....	0
Elementary.....	1	National School Lunch Program:	
Secondary.....	1	Average Daily Participation.....	165
Number of Accredited Schools:		Free and Reduced Meals.....	116
Approved.....	2	Lunch Price - Elementary.....	\$1.25
Approved with Merit.....	0	Lunch Price - Secondary.....	\$1.50
Approved with Comment.....	0	Pupil Transportation Program:	
Not Approved.....	0	Average Daily Ridership 2005-06	87
High School Diplomas Regular.....	26	District Owned Operation	
Other Completions*	0	* Certificates of Completion issued by the district	
Graduation Completion Rate...	93%	** Limited English Proficient (LEP)	

Highlights

The Cascade School District and community embarked on a major geothermal project to heat and cool the school. That project was substantially completed in August 2007. The geothermal units use water from the ground to both heat and cool the school. Engineers estimate it will save the District approximately \$90,000 in heating cost each year.

Progress Towards Meeting Goals

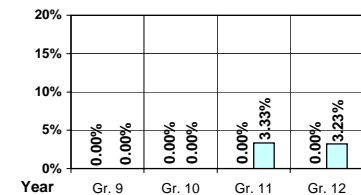
2006-07 Goals	Progress
Install geothermal HVAC in K-12 Building	System is install and operating
Repair water damage in classrooms	Damage repaired and classrooms operational
Study safety and security for building	Awaiting outcome of the SDE study on security
Achieve AYP in district	Elementary achieved – Secondary – not achieved

Student Profiles

Ethnicity

Race	Male	Female	Total
White	53.30%	42.48%	95.78%
Black	0.00%	0.00%	0.00%
Hispanic	1.85%	1.58%	3.43%
Nat. Amer.	0.00%	0.00%	0.00%
Asian/Pac	0.53%	0.26%	0.79%
Total	55.68%	44.32%	100.00%

Dropouts



Year	Gr. 9	Gr. 10	Gr. 11	Gr. 12
05-06	0	0	0	0
06-07	0	0	1	1

Financial Information 2006-07

	M & O Fund	%	All Funds	%
Revenues:				
Local Taxes	\$177,022	6.78%	\$490,313	6.34%
Other Sources	117,871	4.52%	4,350,861	56.29%
State	2,314,811	88.70%	2,392,340	30.95%
Federal	0	0.00%	495,227	6.42%
Total	\$2,609,704	100.00%	\$7,728,741	100.00%

Supplemental Information

Property and Agricultural Equipment Replacement Taxes.....	\$46,492
Lottery Revenues.....	\$15,911
Technology Grant.....	\$31,140

Expenditures:	Total	%	ADA	Rank
M & O Instruction	\$1,682,161	62.19%		
M & O Support Services	1,022,717	37.81%		
M & O Other	0	0.00%		
Total M & O	\$2,704,878	100.00%	\$8,160	41
Total All Funds	\$4,577,756	100.00%	\$13,810	19

Tax Levies 9-1-2006

	Total	Per ADA	Rank
Property Market Values	\$600,954,392	\$1,812,998	9
Total General M & O Levies	0.000298285		76
Total District Levies	0.000764211		103

Staff Data 2006-07

Personnel:	FTE	ADA To FTE	Teachers Salaries:	Rank
Elementary Teachers	10.96	17	Beginning Salary on Schedule	\$30,000
Secondary Teachers	15.75	10	Highest Salary on Schedule	\$50,504
Administrators	3.87	86	Average Elementary Teacher's Salary	\$40,538 73
Other Certified Staff	2.22	149	Average Secondary Teacher's Salary	\$44,048 48
Total Certified Staff	32.80	10	Average Superintendent's Salary	\$77,632 79
Total Non-Certified Staff	14.36	23		

Note: Rank represents how this district compares to the other public school districts in the State of Idaho; high to low (1 being the highest).



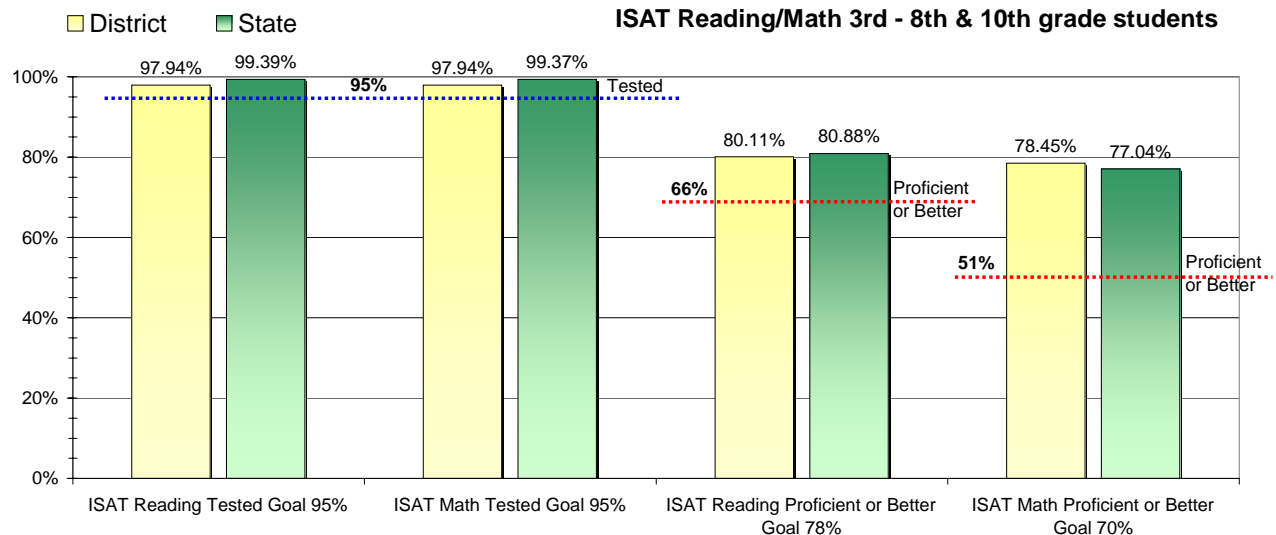
Adequate Yearly Progress and Assessment 2006-07

Did Cascade District make Adequate yearly progress for 2006-07? No

Percent of the 41 targets that Cascade District made: 97.56%

The goal in our nation is for all students in grades 3 through 8 and 10 to be proficient in reading and math by the spring of 2014. Idaho uses the Idaho Standards Achievement Test (ISAT) and the Idaho Alternate Assessment (IAA) to measure proficiency. This report shows the percentage of students who met state goals for proficiency in reading and math.

More Information is available at: <http://www.sde.state.id.us/AYP/Ayp07/default.asp>



To Protect the privacy of individual students the following symbols are used.

^ No participation determinations are made for groups of less than 10 students. The participation rate of students in this group is included in district and state totals.

~ No proficiency determinations are made for groups of less than 34 students. The proficiency level of students in this group is included in district and state totals

3rd Indicator - Graduation Rate		
2005	2006	Goal
92%	96.15%	Met