

# Weiser District #431

Washington County  
 925 Pioneer Rd, Weiser, ID 83672  
 Phone: (208) 414-0616 Fax: (208) 414-1265  
 James Reed, Superintendent

## District Characteristics 2006-07

Fall Enrollment .....	1,672	Special Education:	
Average Daily Attendance.....	1,553	Special Education Students.....	131
State Ranking Per ADA.....	34	Gifted and Talented Students.....	38
Number of Schools (sites):		Number of LEP Students**.....	238
Elementary.....	2	National School Lunch Program:	
Secondary.....	2	Average Daily Participation.....	1,194
Number of Accredited Schools:		Free and Reduced Meals.....	965
Approved.....	4	Lunch Price - Elementary.....	\$1.05
Approved with Merit.....	0	Lunch Price - Secondary.....	\$1.30
Approved with Comment.....	0	Pupil Transportation Program:	
Not Approved.....	0	Average Daily Ridership 2005-06	642
High School Diplomas Regular.....	126	District Owned Operation	
Other Completions* .....	1	* Certificates of Completion issued by the district	
Graduation Completion Rate...	89%	** Limited English Proficient (LEP)	

## Highlights

- On the Spring Idaho Reading Indicator 90% of the students scored at a proficient level.
- The Weiser School District offers the KED program for all kindergarten students who need a little extra help. Students in this program attend their regular kindergarten class one day and the next day, attend the KED program.
- All first, second and third grade students work each week in the school computer lab using the Plato Math software to improve skills and extend learning.
- The academic theme of Park Intermediate School (grades 4 and 5) this year is "What Have You Done Today to Make You Feel Proud?". The school conducted 3 "Pride" assemblies recognizing student accomplishments and encouraging academic achievement and positive citizenship.
- Park School students set a new reading record. Based on the Accelerated Reading point system, Park students read and tested on books that resulted in, on average, 117 points per student. Eight years prior, the per student average was 73 points.
- 205 Park School students out of 245 total students met their reading and citizenship goals.
- Park School hosts a special summer school for 60 high performing 3<sup>rd</sup>, 4<sup>th</sup>, and 5<sup>th</sup> graders.
- On the Idaho Direct Writing Assessment, given to all Weiser Middle School seventh grade students, 71.7% of our students were given scores at or above the proficiency level.
- Weiser Middle School's Academic team placed second at the S.R.V. Academic Championship.

## Progress Towards Meeting Goals

### 2006-07 Goals

### Progress

Align instruction and assessment with a standards based curriculum and evaluate the effectiveness of the curriculum in promoting student learning and achievement.

Staff and administration use the state content standards to guide instruction. Extended learning opportunities are provided before school, after school and in the summer.

Provide a highly trained and motivated staff that works together to set high academic standards for all students, regardless of their circumstances.

All staff members are certified for the subject and level they teach. Each summer at least 30% of the instructional staff participates in a Summer Institute studying assessment results and instructional practices and plans.

Provide a safe and respectful learning environment for all members of our learning community.

The administration and staff meet weekly to assess the learning environment and develop plans to improve student behavior and achievement. Poor behavior will not interfere with instruction and learning in the Weiser School District. Making good choices, healthy choices and promoting mutual respect are emphasized.

Provide a variety of challenging opportunities and encouragement for all students to achieve their highest potential.

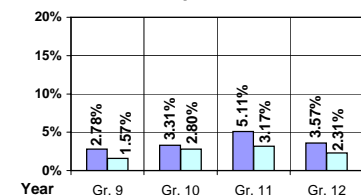
Weiser High School offers college Calculus, Algebra and History. Students are able to take classes live, on-line directly from the College of Idaho and/or take a concurrent credit calculus class taught by the Weiser High School Calculus instructor. The Distance Education Lab has opened up several advance opportunities for our students and community. Weiser School district hired Gifted Talented "coaches" in each school to design curriculum for students who may need more challenging opportunities.

## Student Profiles

### Ethnicity

Race	Male	Female	Total
White	36.78%	36.48%	73.26%
Black	0.06%	0.18%	0.24%
Hispanic	12.56%	13.22%	25.78%
Nat. Amer.	0.18%	0.12%	0.30%
Asian/Pac	0.24%	0.18%	0.42%
Total	49.82%	50.18%	100.00%

## Dropouts



Year	Gr. 9	Gr. 10	Gr. 11	Gr. 12
05-06	4	4	7	4
06-07	2	4	4	3

### Financial Information 2006-07

	M & O Fund	%	All Funds	%
<b>Revenues:</b>				
Local Taxes	\$48,034	0.54%	\$537,081	4.70%
Other Sources	425,247	4.77%	616,178	5.39%
State	8,433,861	94.69%	8,808,985	77.11%
Federal	0	0.00%	1,462,186	12.80%
<b>Total</b>	<b>\$8,907,142</b>	<b>100.00%</b>	<b>\$11,424,430</b>	<b>100.00%</b>

#### Supplemental Information

Property and Agricultural Equipment Replacement Taxes.....	\$34,174
Lottery Revenues.....	\$72,438
Technology Grant.....	\$63,129

Expenditures:	Total	%	ADA	Rank
M & O Instruction	\$5,871,130	66.09%		
M & O Support Services	2,983,256	33.58%		
M & O Other	29,058	0.33%		
<b>Total M &amp; O</b>	<b>\$8,883,444</b>	<b>100.00%</b>	<b>\$5,719</b>	<b>102</b>
<b>Total All Funds</b>	<b>\$11,303,861</b>	<b>100.00%</b>	<b>\$7,278</b>	<b>120</b>

Tax Levies 9-1-2006	Total	Per ADA	Rank
Property Market Values	\$343,658,574	\$221,256	83
Total General M & O Levies	0.000063057		93
Total District Levies	0.001223913		97

### Staff Data 2006-07

Personnel:	FTE	ADA To FTE	Teachers Salaries:	Rank
Elementary Teachers	47.08	18	Beginning Salary on Schedule	\$30,000
Secondary Teachers	46.16	16	Highest Salary on Schedule	\$50,477
Administrators	8.00	194	Average Elementary Teacher's Salary	\$43,914 38
Other Certified Staff	8.50	183	Average Secondary Teacher's Salary	\$42,836 64
Total Certified Staff	109.74	14	Average Superintendent's Salary	\$82,934 57
Total Non-Certified Staff	68.17	23		

Note: Rank represents how this district compares to the other public school districts in the State of Idaho; high to low (1 being the highest).



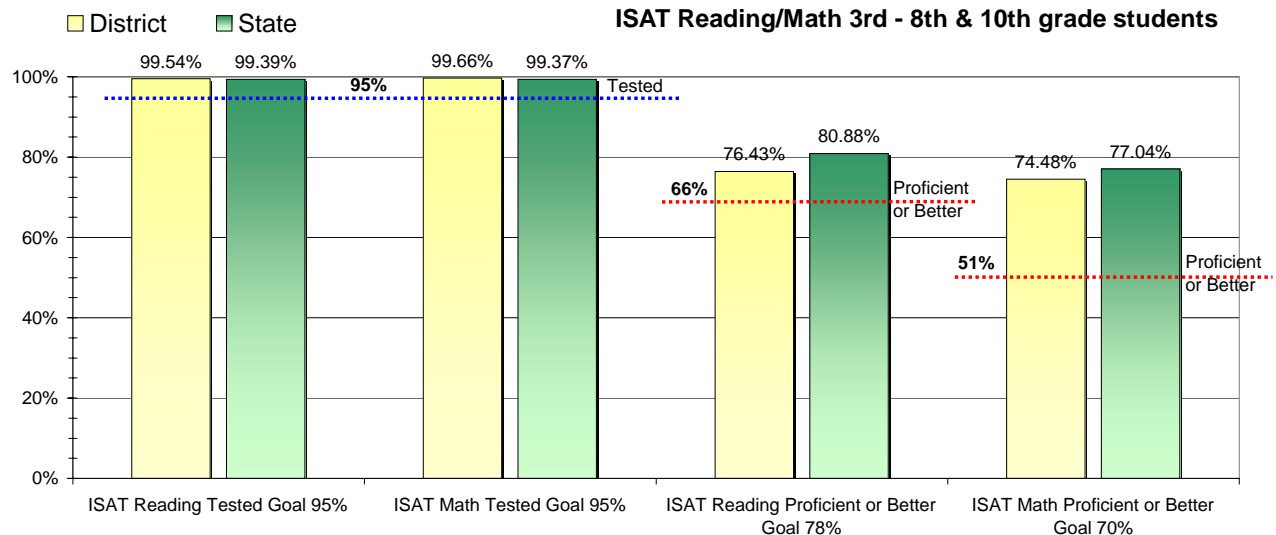
### Adequate Yearly Progress and Assessment 2006-07

Did Weiser District make Adequate yearly progress for 2006-07? No

Percent of the 41 targets that Weiser District made: 78.05%

The goal in our nation is for all students in grades 3 through 8 and 10 to be proficient in reading and math by the spring of 2014. Idaho uses the Idaho Standards Achievement Test (ISAT) and the Idaho Alternate Assessment (IAA) to measure proficiency. This report shows the percentage of students who met state goals for proficiency in reading and math.

More Information is available at: <http://www.sde.state.id.us/AYP/Ayp07/default.asp>



To Protect the privacy of individual students the following symbols are used.

^No participation determinations are made for groups of less than 10 students. The participation rate of students in this group is included in district and state totals.

~ No proficiency determinations are made for groups of less than 34 students. The proficiency level of students in this group is included in district and state totals

3rd Indicator - Graduation Rate		
2005	2006	Goal
86.23%	89.74%	Met