

Richard McKenna Charter High School

Elmore County

1993 E. 8th N., Suite 105, Mountain Home, ID 83647

Phone: (208) 580-2449 Fax: (208) 580-2450

Larry Slade, Administrator

Charter School Characteristics 2006-07

Fall Enrollment	346	Special Education:	
Average Daily Attendance.....	299	Special Education Students.....	12
State Ranking Per ADA.....	92	Gifted and Talented Students.....	0
Number of Schools (sites):		Number of LEP Students**.....	0
Elementary.....	N/A	National School Lunch Program:	
Secondary.....	1	Average Daily Participation.....	N/A
Number of Accredited Schools:		Free and Reduced Meals.....	N/A
Approved.....	1	Lunch Price - Elementary.....	N/A
Approved with Merit.....	0	Lunch Price - Secondary.....	N/A
Approved with Comment.....	0	Pupil Transportation Program:	
Not Approved.....	0	Average Daily Ridership 2005-06	N/A
High School Diplomas Regular.....	55	Contracted Operation	
Other Completions*	0	* Certificates of Completion issued by the district	
Graduation Completion Rate...	N/A	** Limited English Proficient (LEP)	

Highlights

The 2006/07 school year was a banner year for Richard McKenna Charter High School. Eight Hundred and forty-five students participated in our online program compared with 646 students in the previous year. Students who come to our school are often low skilled, but after staying in our program for more than one year, over 97% achieve proficiency in reading and language while 88% are proficient in math.

Progress Towards Meeting Goals

2006-07 Goals

Progress

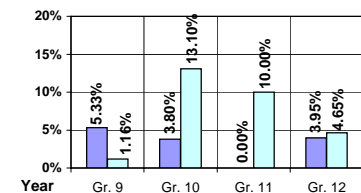
No Data Submitted

Student Profiles

Ethnicity

Race	Male	Female	Total
White	41.89%	45.38%	87.27%
Black	0.87%	0.58%	1.45%
Hispanic	3.76%	3.18%	6.94%
Nat. Amer.	0.29%	0.87%	1.16%
Asian/Pac	2.02%	1.16%	3.18%
Total	48.83%	51.17%	100.00%

Dropouts



Year	Gr. 9	Gr. 10	Gr. 11	Gr. 12
05-06	4	3	8	3
06-07	1	11	9	4

Financial Information 2006-07

	M & O Fund	%	All Funds	%
Revenues:				
Local Taxes	\$0	0.00%	\$0	N/A
Other Sources	81,875	3.64%	85,409	3.76%
State	2,167,954	96.36%	2,184,996	96.24%
Federal	0	0.00%	0	0.00%
Total	\$2,249,829	100.00%	\$2,270,405	100.00%

Supplemental Information

Property and Agricultural Equipment Replacement Taxes.....	\$0
Lottery Revenues.....	\$4,557
Technology Grant.....	\$12,485

Expenditures:	Total	%	ADA	Rank
M & O Instruction	\$1,131,463	69.09%		
M & O Support Services	506,104	30.91%		
M & O Other	0	0.00%		
Total M & O	\$1,637,567	100.00%	\$5,477	111
Total All Funds	\$1,757,498	100.00%	\$5,878	134

Tax Levies 9-1-2006

	Total	Per ADA	Rank
Property Market Values	N/A		
Total General M & O Levies	N/A		
Total District Levies	N/A		

Staff Data 2006-07

District Personnel:	FTE	ADA To FTE	Teachers Salaries:	Rank
Elementary Teachers	0.00	N/A	Beginning Salary on Schedule	\$30,000
Secondary Teachers	14.62	20	Highest Salary on Schedule	\$48,113
Administrators	1.00	299	Average Elementary Teacher's Salary	N/A N/A
Other Certified Staff	1.00	299	Average Secondary Teacher's Salary	\$39,445 113
Total Certified Staff	16.62	18	Administrator's Salary	\$83,047 55
Total Non-Certified Staff	2.29	131		

Note: Rank represents how this charter school compares to the other public school districts in the State of Idaho; high to low (1 being the highest).



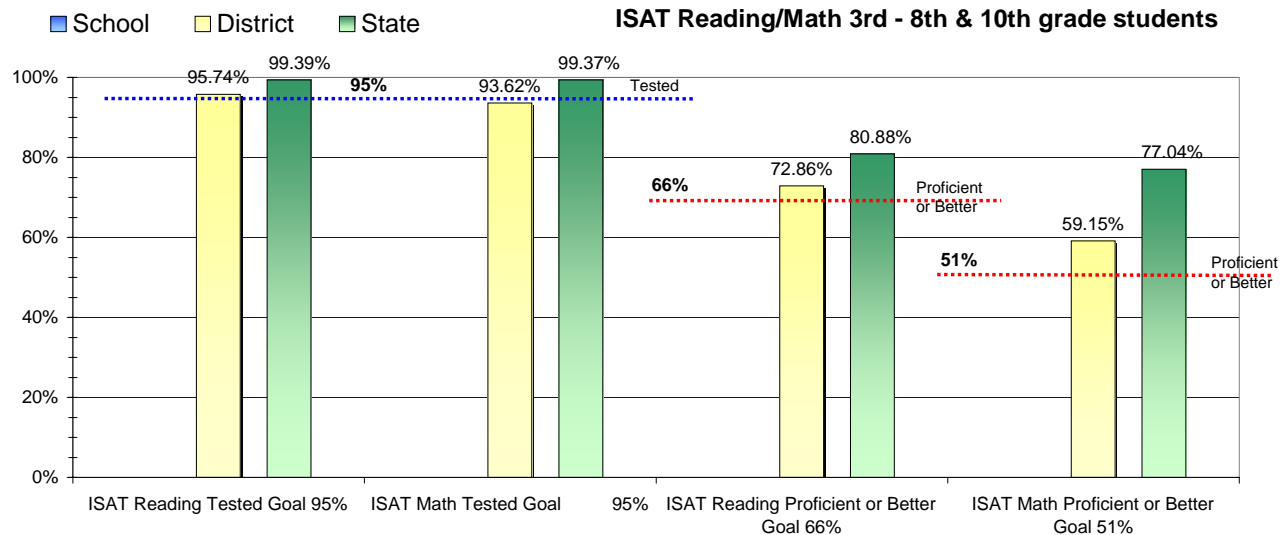
Adequate Yearly Progress and Assessment 2006-07

Did Richard McKenna Charter High School make Adequate yearly progress for 2006-07? No

Percent of the 41 targets that Richard McKenna Charter High School made: 97.56%

The goal in our nation is for all students in grades 3 through 8 and 10 to be proficient in reading and math by the spring of 2014. Idaho uses the Idaho Standards Achievement Test (ISAT) and the Idaho Alternate Assessment (IAA) to measure proficiency. This report shows the percentage of students who met state goals for proficiency in reading and math.

More Information is available at: <http://www.sde.state.id.us/AYP/Ayp07/default.asp>



To protect the privacy of individual students the following symbols are used.

^ No participation determinations are made for groups of less than 10 students. The participation rate of students in this group is included in district and state totals.

~ No proficiency determinations are made for groups of less than 34 students. The proficiency level of students in this group is included in district and state totals

3rd Indicator - Language Usage

2005	2006	Met Goal
88.46%	90.62%	