

Blaine County District #061

Blaine County
 118 W Bullion St, Hailey, ID 83333
 Phone: (208) 578-5000 Fax: (208) 578-5110
 Jim Lewis, Superintendent

District Characteristics 2008-09

Fall Enrollment	3,290	Special Education:	
Average Daily Attendance.....	2,980	Special Education Students.....	341
State Ranking Per ADA.....	23	Gifted and Talented Students.....	309
Number of Schools (sites):		Number of LEP Students**.....	682
Elementary.....	6	National School Lunch Program:	
Secondary.....	4	Average Daily Participation.....	1,209
Number of Accredited Schools:		Free and Reduced Meals.....	955
Accredited.....	3	Lunch Price - Elementary.....	\$2.00
Provisionally Accredited.....	4	Lunch Price - Secondary.....	\$2.50
Approved with Comment.....		Pupil Transportation Program:	
Advised/Warned.....		Average Daily Ridership 2007-08	1,260
High School Diplomas Regular.....	187	District Owned Operation	
Other Completions*	5		
Graduation Completion Rate...	94%	* Certificates of Completion issued by the district	
		** Limited English Proficient (LEP)	

Highlights

No Data Submitted

Progress Toward Meeting Goals

2008-09 Goals

Progress

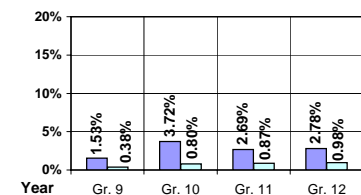
No Data Submitted

Student Profiles

Ethnicity

Race	Male	Female	Total
White	33.50%	33.10%	66.60%
Black	2.86%	0.76%	3.62%
Hispanic	14.04%	13.53%	27.57%
Nat. Amer.	1.06%	0.09%	1.16%
Asian/Pac	0.61%	0.46%	1.06%
Total	52.07%	47.93%	100.00%

Dropouts



Year	Gr. 9	Gr. 10	Gr. 11	Gr. 12
07-08	4	9	6	6
08-09	1	2	2	2

Financial Information 2008-09

	M & O Fund	%	All Funds	%
Revenues:				
Local Taxes	\$32,100,154	65.31%	\$38,296,123	65.39%
Other Sources	457,968	0.93%	1,805,641	3.08%
State	16,592,317	33.76%	17,061,482	29.13%
Federal	0	0.00%	1,405,970	2.40%
Total	\$49,150,439	100.00%	\$58,569,216	100.00%

Supplemental Information

Property and Agricultural Equipment Replacement Taxes.....	\$15,628
Lottery Revenues.....	\$203,521
Technology Grant.....	\$96,044

Expenditures:	Total	%	ADA	Rank
M & O Instruction	\$28,762,924	65.26%		
M & O Support Services	15,134,396	34.34%		
M & O Other	176,854	0.40%		
Total M & O	\$44,074,174	100.00%	\$14,792	11
Total All Funds	\$55,814,347	100.00%	\$18,733	14

Tax Levies 9-1-2008

	Total	Per ADA	Rank
Property Market Values	\$12,450,007,318	\$4,178,556	3
Total General M & O Levies	0.002589276		19
Total District Levies	0.003091585		44

Staff Data 2008-09

Personnel:	FTE	ADA To FTE	Teachers Salaries:	Rank
Elementary Teachers	145.59	12	Beginning Salary on Schedule	\$38,743
Secondary Teachers	109.92	12	Highest Salary on Schedule	\$81,655
Administrators	18.79	159	Average Elementary Teacher's Salary	\$67,557 1
Other Certified Staff	23.10	129	Average Secondary Teacher's Salary	\$70,844 1
Total Certified Staff	297.40	10	Average Superintendent's Salary	\$166,938 2
Total Non-Certified Staff	149.00	20		

Note: Rank represents how this district compares to the other public school districts in the State of Idaho; high to low (1 being the highest).



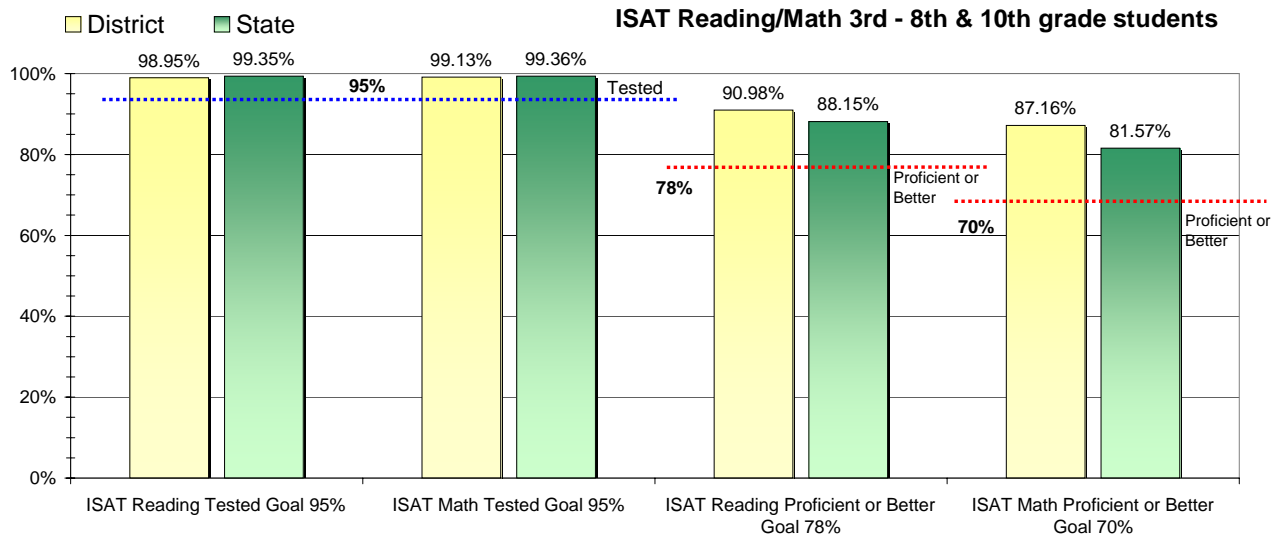
Adequate Yearly Progress and Assessment 2008-09

Did Blaine County District make Adequate yearly progress for 2008-09? No

Percent of the 41 targets that Blaine County District made: 97.56%

The goal in our nation is for all students in grades 3 through 8 and 10 to be proficient in reading and math by the spring of 2014. Idaho uses the Idaho Standards Achievement Test (ISAT) and the Idaho Alternate Assessment (IAA) to measure proficiency. This report shows the percentage of students who met state goals for proficiency in reading and math.

More Information is available at: <http://www.sde.state.id.us/AYP/Ayp09/default.asp>



To Protect the privacy of individual students the following symbols are used.

^ No participation determinations are made for groups of less than 10 students. The participation rate of students in this group is included in district and state totals.

~ No proficiency determinations are made for groups of less than 34 students. The proficiency level of students in this group is included in district and state totals

3rd Indicator - Graduation Rate		
2007	2008	Goal
86.89%	87.04%	Met