

SAT School Day

April 13 & 26 (makeup), 2022

ACCUPLACER

On-Demand



December 2021

Providing updates to the College Entrance Exam Coordinators

[Contact Us](#)

[Contact Peers](#)

[Website](#)

[FAQ](#)

Upcoming Due Dates

November 29 | December 7



[Begin Receiving
PSAT/NMSQT Scores](#)

November 30 (Past Due)



[Determine Fee Waiver
Eligibility](#)

December 10 (Updated)



[Validate Grade Levels for
PSAT/NMSQT Invoice](#)

December 14



[Receive Vouchers for
March/May National](#)

December 24



[Interpret PSAT/NMSQT
Scores](#)

December 24-January 3



[College Board Office Closed
for the Holiday](#)

January 19



[Bulk Register for April SAT
School Day](#)

January 21



[Submit Off-Site Testing
Form \(if needed\)](#)

**Feb 11 (March National) |
April 8 (May National)**



[Register for the March/May
National \(Voucher Schools\)](#)

February 22 (Updated)



[Submit Accommodations
Request for April SAT
School Day](#)

Upcoming Training and Meetings

December 1, 2pm MST



[PSAT/NMSQT Score Interpretation Webinar](#)

December 14, 2pm MST



[All about Accommodations Webinar](#)

December 16, 2pm MST



[Virtual School Coordinator Training Webinar](#)

January 5, 2pm MST



[Spring SAT School Day Overview Webinar](#)

January 6, 2pm MST (Added)



[Bulk Registration for SAT School Day](#)



November 29 (Educator) | December 7 (Student)

Begin Receiving PSAT/NMSQT Scores

Students and educators begin receiving PSAT/NMSQT scores in their account and the K-12 Reporting Portal, respectively.

Score release may be delayed due to a [variety of factors](#). Call (888)-477-7728 for more information.

[Find Now](#)

Now - November 30 (Past Due)

Determine Fee Waiver Eligibility

SDE only covers 10th grade PSAT/NMSQT, but 11th graders in need are eligible for fee waivers.

Use the alternative eligibility requirements when a universal free lunch policy is in effect.



[Read More](#)



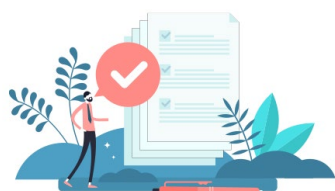
December 1, 2pm MST

PSAT/NMSQT Score Interpretation Webinar

Join us for a review of the College Board's K12 Score Reporting Portal and PSAT/NMSQT score results.

We will examine the reports available to educators and provide some insight into PSAT/NMSQT scoring.

[Register Now](#)



November 30 – **December 10 (Updated)**

Validate Grade Levels for PSAT/NMSQT Invoice

Sign in to TOS to review answer sheet counts, make grade-level adjustments, and apply fee waiver.

Schools will receive grade 11 invoice in January.

[Read More](#)

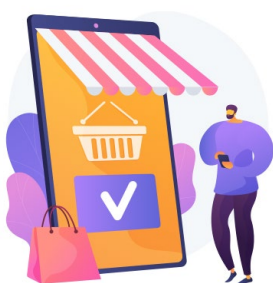


December 14, 2pm MST

All about Accommodations Webinar

SSD Coordinators – join us to learn all about what's new for spring 2022, including SSD Online updates, available accommodations, and important dates.

[Register Now](#)



December 14

Receive Vouchers for March/May National

Virtual schools that requested vouchers for the March/May National SAT Saturday administrations receive vouchers.

Call (888)-477-7728 for any questions.

[Read FAQ](#)



December 16, 2pm MST

Virtual School Coordinator Training Webinar

Join us for the Idaho Virtual Schools – All You Need to Know for Spring 2022 webinar.

This webinar is for virtual school test coordinators and will include information on off-site testing planning, vouchers, fee waivers and more.

[Register Now](#)



Now – December 24 (before the holiday)

Interpret PSAT/NMSQT Scores

Use the score resources to understand scores and help students interpret their scores.

Questions? Call Steve at (408) 828-7410.

[Read More](#)



December 24 – January 3, 2022

College Board Office Closed for the Holiday

Customer service is only available in limited hours. Contact the College Board customer service team for any urgent issues.

[Contact CB](#)

January 5, 2022, 2pm MST

Spring SAT School Day Overview Webinar

Join us for this one-stop shop webinar for all things SAT School Day for test coordinators.

Topics include important dates, training opportunities for staff, shipping information, bulk registration deadlines and more.

[Register Now](#)



January 6, 2022, 2pm MST

Bulk Registration for SAT School Day (Added)

Need a quick refresher on how to bulk register, or upload your roster, for SAT School Day?

Join us for a quick 30 minutes that outlines best practices for ensuring a successful file upload!

[Register Now](#)



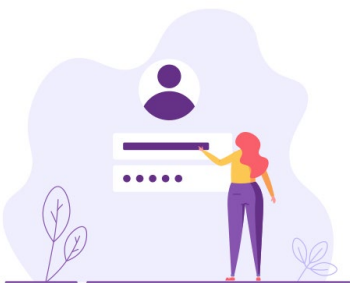
January 4 – January 19, 2022

Bulk Register for April SAT School Day

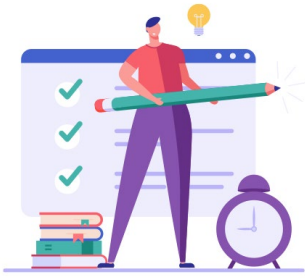
Bulk registration is required for the April SAT School Day.

District test coordinators and district bulk registration coordinators will receive access codes via email on January 4, 2022.

[Learn More](#)



Now – January 21, 2022



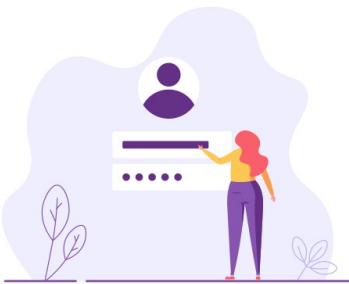
Submit Off-Site Testing Form (if needed)

Are you a virtual school testing your students in a hotel or some off-site location?

The form is to adjust the number of return kits based on the form.

[Submit Now](#)

Now - February 11 (March) | April 8 (May)



Register for the March/May National (Voucher Schools)

Students enrolled at virtual voucher schools may register for the March/May National SAT Saturday administrations beginning December 14 using their voucher codes.

Call (888)-477-7728 for any questions.

[Read More](#)



Now - **February 22, 2022 (Updated)**

Submit Accommodations Request

Students with disabilities or English learners may qualify for testing accommodations.

Ensure necessary accommodations are approved in SSD Online in a timely manner.

[Learn More](#)

Website Updates

Date	Status	Document
11/02/21	Posted	<u>Opportunity Scholarship Information Sheet</u>

11/02/21	Posted	Opportunity Scholarship Information Sheet in Spanish
11/15/21	Posted	November Newsletter
11/30/21	Posted	Welcome to SAT School Day Spring 2022
11/30/21	Posted	Information for SSD Coordinators SAT School Day Spring 2022

College Board Field Support



Stephen McCue

Stephen McCue is the College Board's Director of State and District Partnerships in Idaho. He is responsible for providing direct program support to schools and districts and assists them in their efforts to promote college and career readiness.

Steve is available to provide school counselors, test coordinators and administrators with training and professional development related to the SAT Suite of Assessments. Please contact him at (408) 828-7410 smccue@collegeboard.org to schedule a workshop.

Contact Us (PSAT/NMSQT)

1-888-477-7728

psat/nmsqt@info.collegeboard.org

for Accommodation and EL Supports

1-212-713-8333

ssd@info.collegeboard.org

Contact Us (SAT)

1-866-253-0385

IdahoSDSupport@collegeboard.org

You received this email because we recognized you as a District Test Coordinator or College Entrance Exam Coordinator in the College Board Intake Survey or via ISEE.