

**PSAT/NMSQT Day**

October 13 & 26, 2021

**SAT School Day**

April 13 & 26, 2022

**ACCUPLACER**

On-Demand



September 2021

Providing updates to the College Entrance Exam Coordinators

[Contact Us](#)

[Contact Peers](#)

[Website](#)

[FAQ](#)

## Upcoming Due Dates

**ASAP (past due)**



[Submit Accommodations Request](#)

**September 8 (past due)**



[Complete the Intake Survey](#)

**September 15**



[Order Fall PSAT/NMSQT](#)

**September 15**



[Bulk Register for the Fall PSAT/NMSQT](#)

**September 21**



[Review Coordinator's Manual and Checklist](#)

**September 29**



[Complete PSAT/NMSQT Coordinator Online Training](#)

**October 5**



[Provide Notification to the Families](#)

**October 6 (prim) | 22 (alt)**



[Receive Secure Test Materials](#)

**October 13 (prim) | 26 (alt)**



[Administer Fall PSAT/NMSQT](#)

**October 14 (prim) | 27 (alt)**



[Return Answer Sheets for Scoring](#)

## Upcoming Training and Meetings

September 1, 3PM MDT



September 2, 7PM MDT



[PSAT/NMSQT Kick-off Webinar for Educators](#)

[PSAT/SAT Webinar for Idaho Students and Families](#)

**September 23, 9AM MDT**



[College Board Annual Counselor Workshop](#)



ASAP (Past Due)

### **Submit Accommodations Request**

Students with disabilities or English learners may qualify for testing accommodations.

Ensure necessary accommodations are approved in a timely manner.

[\*\*Learn More\*\*](#)



September 8 (Past Due)

### **Complete the Intake Survey**

Let us know of your fall PSAT/NMSQT and spring SAT participation status.

Verify or update your school's coordinators' contact information.

[\*\*Complete Now\*\*](#)



September 1, 3PM MDT

### **PSAT/NMSQT Kick-off Webinar for Educators**

College Board is hosting a kick-off webinar for the PSAT/NMSQT Coordinators.

The webinar will cover the overview of the program and be recorded.

[\*\*Register Now\*\*](#)

September 2, 7PM MDT



## PSAT/SAT Webinar for Idaho Students and Families

College Board is hosting an informational webinar for the students and families.

The webinar will cover benefits/resources of the program and be recorded.

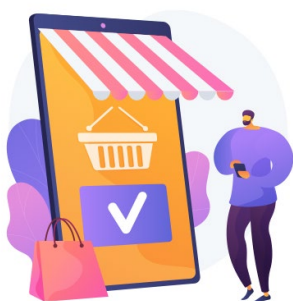
[Register Now](#)

Now - September 15

## Order Fall PSAT/NMSQT

Idaho State Department of Education covers the fall PSAT/NMSQT administration cost for public school sophomores.

Take this opportunity and order materials.



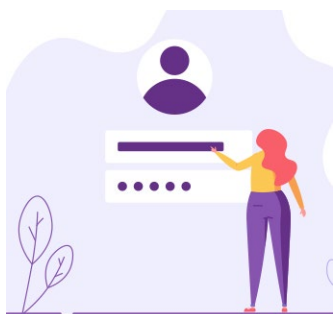
[Learn More](#)

Now - September 15

## Bulk Register for Fall PSAT/NMSQT

Bulk registration is required for the state sponsored assessments.

Contact [IdahoSDSupport@collegeboard.org](mailto:IdahoSDSupport@collegeboard.org) to retrieve your registration access code.



[Learn More](#)

Now – September 21

## Review Coordinator's Manual and Checklist

The manual includes a weekly checklist with important tasks and activities.

Use the checklist for easy and complete administration.



[Read More](#)

September 23, 9AM MDT

## College Board Annual Counselor Workshop



This year's workshop will cover key updates on SAT Suite of Assessments, AP Program, and Big Future college planning resources, including College Board Opportunity Scholarships for the Class of 2022 and Student Search Service.

[Register Now](#)

September 7 – 29

## Complete PSAT/NMSQT Coordinator Online Training



Online training is required for both new and experienced PSAT/NMSQT coordinators.

College Board will release the training to the coordinators on September 7, 2021.

[Read More](#)

Now – October 5

## Provide Notification to the Families



Distribute the [Parent Notification Letter \(versión en español\)](#) to the parents/guardians.

Additional flyers are available on the [website](#).

[Learn More](#)



October 6 (primary) | October 20 (alt)

## Receive Secure Test Materials

Track shipment in the [Test Ordering Site](#).

Call 888-477-7728 ASAP for any missing materials.

[Track Shipment](#)



October 13 (primary) | October 26 (alt)

## Administer Fall PSAT/NMSQT

Follow the PSAT/NMSQT Coordinator manual for secure administration.

Secure materials are site- and date-specific.

[Read More](#)



October 14 (primary) | October 27 (alt)

## Return PSAT/NMSQT Answer Sheets for Scoring

Follow the PSAT/NMSQT Coordinator manual for timely return.

Late returns may affect scoring and billing.

[Read More](#)

---

## Website Updates

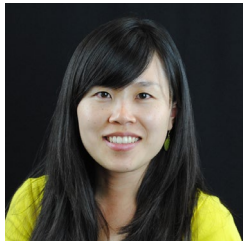
---

Date	Status	Document
08/10/21	Posted	<a href="#">August Newsletter</a>
08/31/21	Posted	<a href="#">Bulk Register for Fall 2021 PSAT/NMSQT by Sept 15</a>
08/31/21	Posted	<a href="#">Request Accommodation for Fall 2021 PSAT/NMSQT</a>
08/31/21	Posted	<a href="#">Satisfaction Survey Result and Improvement Plan</a>

---

---

## From the SDE



Ayaka Nukui, Coordinator  
[anukui@sde.idaho.gov](mailto:anukui@sde.idaho.gov) | 208-332-6926

I hope you all are doing well. Thank you for all you do for your students and community. Please feel free to contact me if you have any questions or concerns about the college entrance exam requirements.

### College Entrance Exam Participation Requirement

- Fall 2021 PSAT/NMSQT is **optional** (the SDE sponsors the 10<sup>th</sup> grade administration).
- **Spring 2022 SAT is required for the Class of 2022/23 (as of August 31), unless the student meets the exemption criteria or participates in ACT/ACCUPLACER, as outlined in [IDAPA 08.02.03.105.03](#).**
- No state-sponsored Fall 2021 SAT.

### Graduation Requirement Update

At the August 26 board meeting, the [Proposed Rule Docket Number 08-0203-2101](#) was approved by the state board members. If accepted by the legislature, the deletion of [IDAPA 08.02.03.105.03](#), college entrance exam graduation requirement, is expected to take effect for the 2022-23 school year.

The docket will be posted on the [Idaho Administrative Bulletin](#) on October 7 for public comments. I encourage you and your students to submit comments. For any questions or additional information, contact Tracie Bent at [tracie.bent@osbe.idaho.gov](mailto:tracie.bent@osbe.idaho.gov).

**Contact Us**  
**(PSAT/NMSQT)**

1-888-477-7728  
[psat/nmsqt@info.collegeboard.org](mailto:psat/nmsqt@info.collegeboard.org)

*for Accommodation and EL Supports*  
1-212-713-8333

---

[ssd@info.collegeboard.org](mailto:ssd@info.collegeboard.org)

---

**Contact Us  
(SAT)**

1-866-253-0385  
[IdahoSDSupport@collegeboard.org](mailto:IdahoSDSupport@collegeboard.org)

You received this email because we recognized you as a  
District Test Coordinator or College Entrance Exam  
Coordinator in the College Board Intake Survey or via ISEE.