



English Learner Program Overview

Maria Puga

English Learner Program Coordinator



Objectives



- Definition of an English Learner (EL)
- Understanding State EL vs. Title III-A Programs
- 2023-2024 Program Updates
- Review tools & resources available to LEAs

Support Staff



- Maria Puga, English Learner Program Coordinator
 - 5th year at SDE
 - Program questions, LIEP, curriculum, Title III-A law, CFGSA, budgets.
- Yuni Barrera, Program Specialist
 - 2nd year on our team
 - Go To Strategies trainings, professional development training questions
- Andrew Bennett, ELPA Coordinator
 - 5th year at SDE
 - All questions on EL assessment
 - WIDA screeners, ACCESS, testing accommodations, DRC questions, etc.
- Beatrice Santiago, Administrative Assistant
 - New to our team!
 - Supports Assessment & Federal Programs
 - General EL questions





Definition of an English Learner (EL)

English Learner Defined



An EL student in Idaho is classified according to the Federal government definition as described in ESEA Section 3201(5). An English learner (EL) is classified as one:

- a. who is aged 3 through 21;
- b. who is enrolled or preparing to enroll in an elementary school or secondary school;
- c.
 - (i.) who was not born in the United States or whose native language is a language other than English;
 - (ii.)
 - (I) who is a Native American or Alaska Native, or a native resident of outlying areas; **-AND-**
 - (II) who comes from an environment where a language other than English has had a significant impact on the individual's level of English language proficiency; **-OR-**
 - (iii.) who is migratory, whose native language is a language other than English, and who comes from an environment where a language other than English is dominant; **-AND-**
- d. whose difficulties speaking, reading, writing, or understanding the English language may be sufficient to deny the individual -
 - (i.) the ability to meet the challenging State academic standards;
 - (ii.) the ability to achieve successfully in classrooms where the language of instruction is English; **-OR-**
 - (iii.) the opportunity to participate fully in society.

Must meet either i ii, or iii

Must meet either part i, ii, or iii

If part ii, then must meet both pieces I and II



State EL vs. Title III-A Programs



Idaho State Department of Education

DEBBIE CRITCHFIELD, SUPERINTENDENT OF PUBLIC INSTRUCTION

What is the State English Learner Program?



- Districts must offer a core language acquisition program for ELs.
- Plan is submitted in the Consolidated Federal & State Grant Application (CFSGA)
- State EL funding exists to implement the core language program for ELs.
 - Instructional Staff
 - Curriculum
 - Parent Engagement
 - Materials/Supplies
- Funded by the number of ELs who took an ACCESS assessment in your LEA from last year.

Title III-A Program



- LEA must have at least 82 EL students to qualify for federal funds
- Services provided with federal Title III-A funds must **supplement** the core English language program.
 - **Professional Development**
 - **Parent Engagement Activities**
 - **Supplemental Curriculum**
 - **Supplemental Services (after school/summer school)**
- Only 2% of a district's federal Title III-A allocation may be used for direct administrative purposes.



Title III-A Allowable Activities

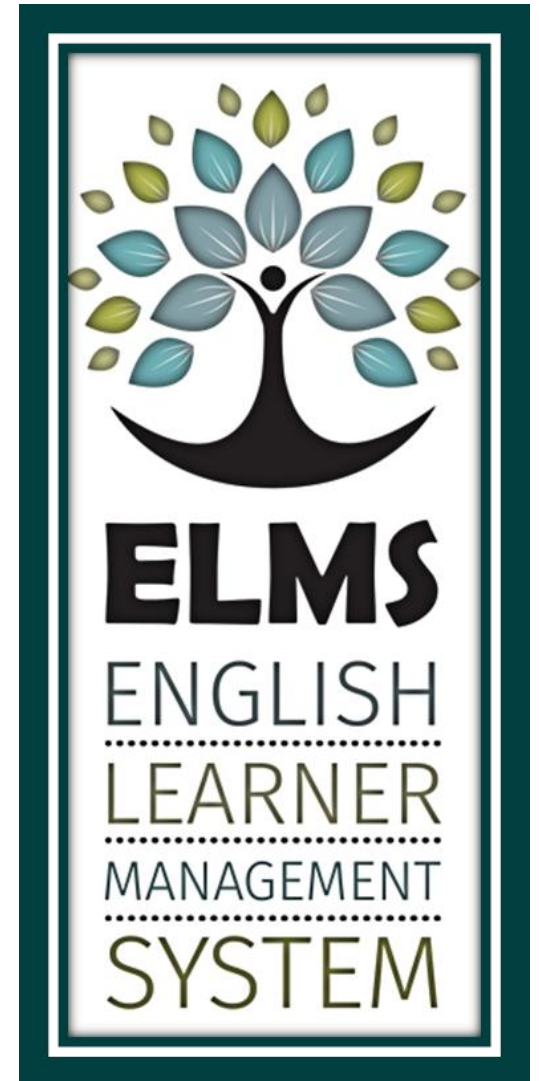


Allowable	Not Allowable
Professional Development costs	Instructional staff teaching core program
Parent events	Translating costs
Supplemental curriculum	Food purchases for events
PD travel costs	Core curriculum
Summer school staff	Paraprofessionals working in general education classroom w/all students
Afterschool tutors	Interpreters
PD Materials & Books	
Paraprofessional staffing for supplementary support	

English Learner Management System



- Every district/charter is required to have an individual assigned to the ELMS Editor role.
 - Please contact your ISEE administrator to grant you ELMS EDITOR or ELMS VIEWER roles
 - Editor roles should be limited
- Used to determine whether a student transferring from another Idaho district/charter is already qualified as an EL or has already exited.
- ELMS Handbook is updated with step-by-step walkthroughs of all actions.
- ELMS Session will be provided Friday, September 15th at 1:30pm!



Let's Review



Identifying English Learner

- 3-21 years old
- Enrolled in US school
- Not born in the United States
- OR native language is NOT English
- Lack of English language proficiency not allowing student to access content
- 30 days from enrollment to determine qualification



State EL funds & Title III-A funds

- I have 1-81 students at my district, meaning I only receive state funds for our EL program
- I have over 82 students at my district, meaning I receive state funds
- AND I receive federal Title III-A funds for supplementary programs



Requirements for an EL Program

- Core Language Instruction Education Program (LIEP)
- Bilingual or English as a New Language (ENL) endorsed teacher
- Professional Development for all staff working with ELs
- Translations of Documents
- Interpreters when needed
- Family engagement activities



2023-2024 Program Updates

Available Resources & Tools



Training Opportunities



Go To Strategies

- 78 strategies reflect five research-based principles
 1. Focus on academic language, literacy, and vocabulary
 2. Link background knowledge and culture to learning
 3. Increase comprehensible input and language output
 4. Promote classroom interaction
 5. Stimulate higher order thinking and the use of learning strategies
- Day-long training
- Geared towards general education teachers
- Free to all districts
- **Limited availability left in November/December; spots open for spring semester!**
- Contact Yuni for more information mbarrera@sde.idaho.gov

Calendar of Events



- First semester includes registration links
- Second semester will be updated & sent by December
- Save the Dates!

English Learner Program Trainings & Events 2023-2024

DATE *EVENT* *TIME (MST)* *LOCATION/REGISTRATION LINK*

August 16	Beginning of Year Update	3:30-4:30pm MST	Virtual	https://idahosde.zoom.us/meeting/register/tjcvfu6qrjorGdyqYy6ZUHJHW6Yvojiwn1zL
Sept 14-15	Federal Programs Director's Meeting		Nampa	https://www.eventbrite.com/e/677039702977?aff=oddtcreator
Sept 15	EL Grant Training By Invitation Only- Enhancement Grant Recipients	9:00am-12:00pm	Nampa	
October 6	Newcomer Support	8:30-4:00pm MST	Boise	https://www.eventbrite.com/e/698524785437?aff=oddtcreator
December 6	Newcomer Support	3:30-5:00 MST	Virtual	https://idahosde.zoom.us/meeting/register/tjEkd-irpzwGtNIGRP138GgcZW4fkDM6hrw
December 13	Mid-Year EL Update	3:30-4:30pm MST	Virtual	https://idahosde.zoom.us/meeting/register/tjMpf-yqrzkqGtTsaVQTU5PFNKTVXS9I_8dq
January 26	IABE Conference Registration link to follow	8:00-4:00pm	Boise	
March 6	Newcomer Support	3:30-5:00pm	Virtual	https://idahosde.zoom.us/meeting/register/tjAocugtrzgqEtdTSiq7sUMXVen3TETXPbS
May 8	Newcomer Support	3:30-5:00pm	Virtual	https://idahosde.zoom.us/meeting/register/tjwtfu2gpz8tHdT-Dt5s0GiwRXOdBA08iYzD
May 15	End of Year EL Update	3:30-4:30pm	Virtual	https://idahosde.zoom.us/meeting/register/tjIsceGspjgvEtUFeVB6eKmj29V4JL_W9Sj
June 5-7	Summer EL Institute Registration Link to Follow	8:00am-4:00pm	Boise	

Upcoming Training Opportunities



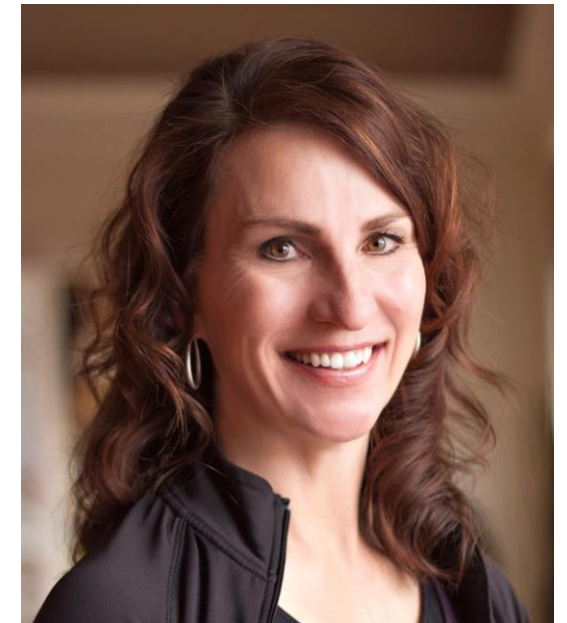
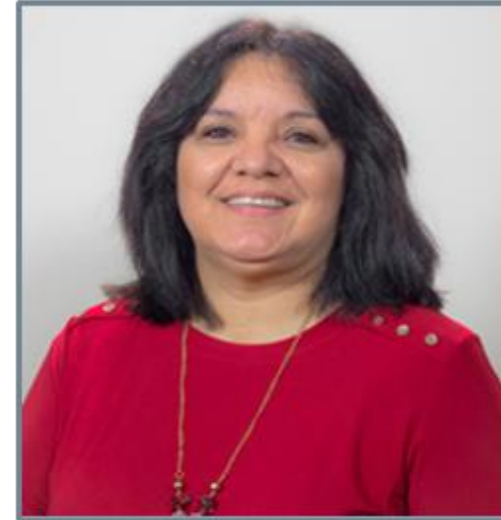
- Newcomer Support Workshop
 - October 6, 2023
 - Boise, Idaho
 - Tools and resources to support newcomers
 - Secondary newcomers & refugee students
 - One day training with follow up webinar series
- IABE Conference (January 26)
 - Nampa, Idaho
- Summer English Learner Institute
 - Save the Date: June 5-7th
 - Boise, Idaho



Regional English Learner Coaches



- For any LEA that is part of the Title III-A consortium
- Rosie Santana: Region 1-3 Coach
 - rosie.languageandliteracy@gmail.com
- Gretchen Kinghorn: Region 4-6 Coach
 - gkinghorn.elf@gmail.com
- Provide support and guidance in:
 - Instructional programming
 - EL Pedagogy
 - Go to Strategies
 - EL Procedures- identification, screening, testing, data
- If interested, please ensure you indicated 'YES' in CFSGA to be included in Title III-A Consortium



Available Digital Tools



- K-12 digital adaptive curriculum available statewide for all English learners
 - **K-6 Literacy Tool: Curriculum Associates (i-Ready)**
 - **6-12 Literacy Tool: Imagine Learning (Language & Literacy; Imagine Reading; Edgenuity)**
 - **K-12 Math for ELs Tool: Ellevation Math**
- Please visit with our vendors to learn more about bringing these tools FOR FREE to your district or school
- Vendors will also present this afternoon



Thank You!



Maria Puga | English Learner Program Coordinator

Idaho State Department of Education

650 W State Street, Boise, ID 83702

208.332.6905

mpuga@sde.idaho.gov

<https://www.sde.idaho.gov/federal-programs/el/index.html>



Idaho State Department of Education

DEBBIE CRITCHFIELD, SUPERINTENDENT OF PUBLIC INSTRUCTION

Presentation Title | 18