



Assessment & Accountability

School Year 2023-2024



Idaho State Department of Education

DEBBIE CRITCHFIELD, SUPERINTENDENT OF PUBLIC INSTRUCTION

September, 2023

Agenda



- What You Need to Know Today
- A&A Team
- Ice Breaker Activity with Other DTCs
- DTC Role
- Testing Windows
- Programs

What You Need to Know Today



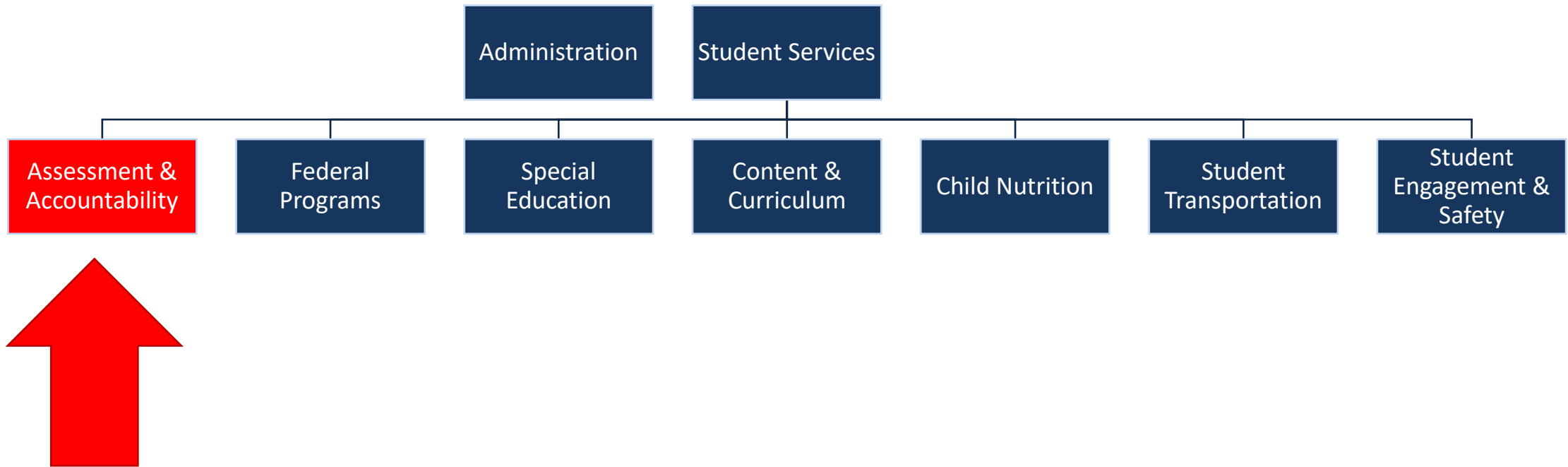
- We are here to support you.
- Your role is important for the successful implementation of statewide assessment programs.
- SDE monitors and allocates resources based on performance indicators including assessment results.
- Sign up to connect with us:
 - [Website](#)
 - [Newsletter](#)
 - [Webinar](#)



A&A Team



Department Structure



Members



- Ayaka Nukui
- Beatrice Santiago NEW!

- Ayaka Nukui - CEE
- Andrew Bennett - ELPA
- Brianna Lynch – ISAT ELA/Math
- Karren Streagle, Ph.D - IDAA
- Kacy Proctor NEW! - IRI
- Kristi Pierce NEW! – ISAT Science
- Paul Kleinert, Ph.D - NAEP
- Valerie Steffen, Ph.D – School Identification and Reporting

What We Do



- Oversee the planning, implementation, and compliance of statewide assessments.
- Provide guidance and training on the administration and use of statewide assessments and other performance indicators.
- Analyze performance indicators and identify schools in the most need.
- Promote the data-driven decision-making.



Ice Breaker Activity



Let's Meet with Other DTCs



- Divide into Groups
 - Small Districts
 - Not Small Districts
 - Charter Schools
 - Virtual Schools
- Find a partner that you have never met
- Find 10 things in common, then find a different partner
- Person meeting with the most people WINS!



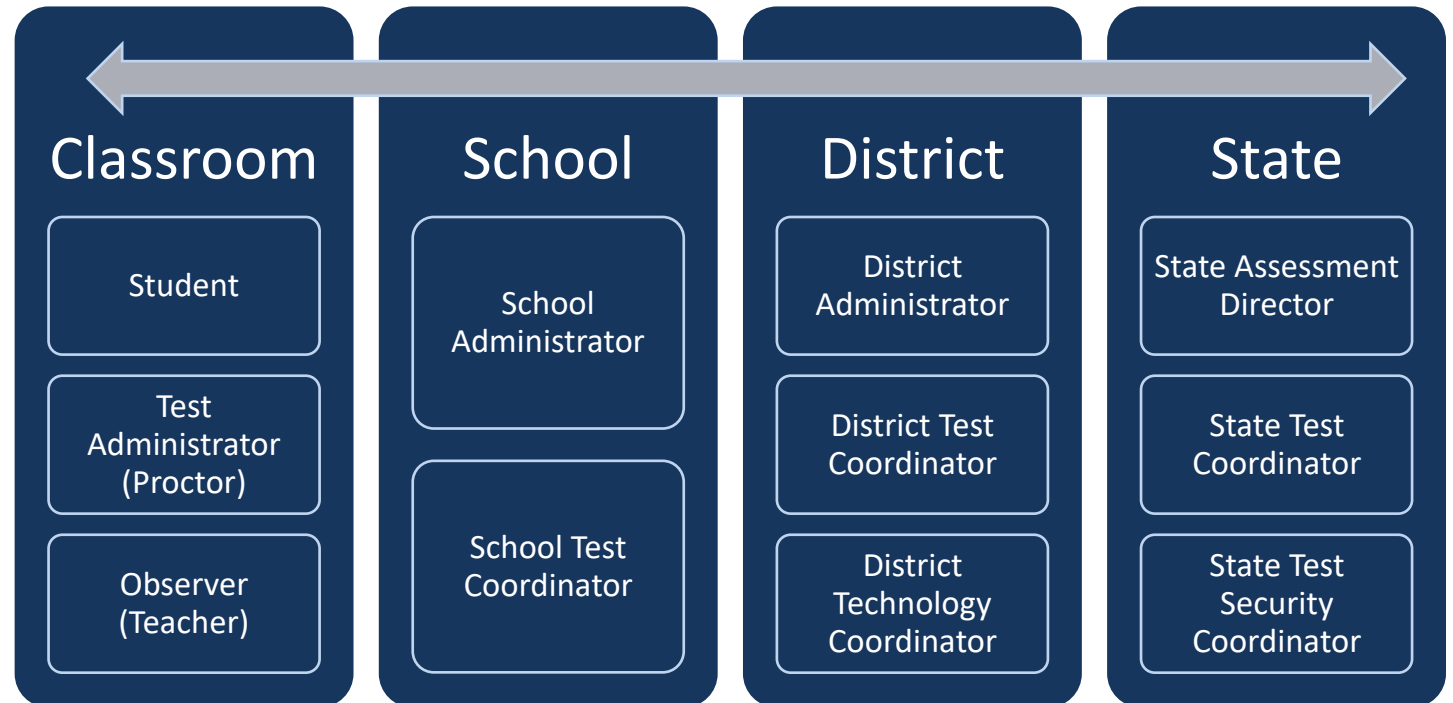
Your Role as the DTC



Expectation



1. Two-Way Communications
2. Let us know how we can help you and better serve you



High-Level DTC Job Description



- Understand Assessment Administration and Test Security Responsibilities
- Order Assessment Materials (if applicable)
- Set up Account and Access to Portals
- Schedule Testing
- Roster
- Ensure Accommodations
- Train District/School Staff
- Ensure Devices are Prepared
- Check Testing Environment
- Monitor Administration
- Distribute/Interpret Reports
- Prepare Reports



Testing Schedule

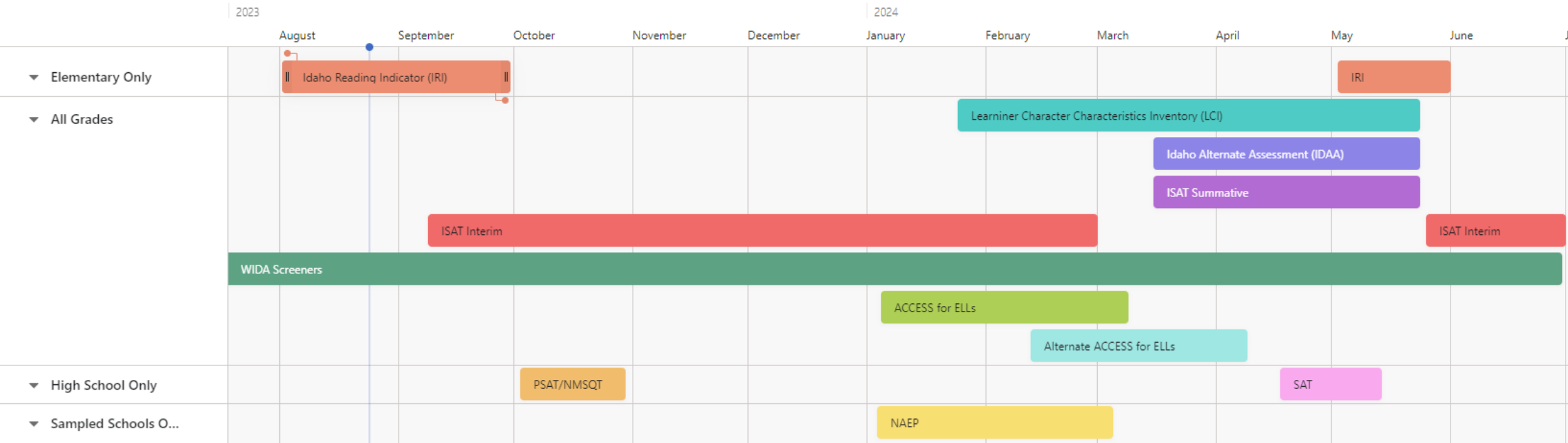


Testing Schedule



- [Testing Calendar](#)
- Fall Testing
 - Required
 - IRI (Grades K-3)
 - WIDA Screeners (Provisional ELs in Grades K-12)
 - Optional
 - PSAT/NMSQT (Grade 10)
- Spring Testing

Statewide Testing Windows Overview (Approx.)





Required Assessments

Required to Administer. Statewide Assessments.



WIDA Screeners - Required



Assessment	WIDA Screeners (Kindergarten W-APT / WIDA Screener)
Description	<p>ACCESS annually assess English learner English language Proficiency in Reading, Writing, Listening and Speaking.</p> <p>Idaho Code §33-1617 outlines the English Learner program requirements to achieve improved academic performance. Idaho Code §08.02.03. subsection 111.06.a through 111.06.m</p>
Testing Window	Ongoing (July-June)
Subjects	English Language Proficiency (Reading, Writing, Listening, Speaking)
Required Grades	K-12
Student Population	Provisional English learners newly enrolled in Idaho

Websites



Contact Details



Andrew Bennett
Coordinator

208-332-6909
abennett@sde.idaho.gov

IRI - Required



Assessment	Idaho Reading Indicator
Description	<p>Idaho's Reading Indicator assesses students in the five critical domains of early reading: phonological awareness, phonics, vocabulary, comprehension, and fluency</p> <p>Idaho Code §33-1806 outlines that the Idaho State Department of Education shall be responsible for the administration of the IRI.</p>
Testing Window	<ul style="list-style-type: none">• August and September (fall)• May (spring)
Subjects	Reading
Required Grades	K-3
Student Population	All Students

Websites



Contact Details

Kacy Proctor
Coordinator

208-332-6988
kproctor@sde.idaho.gov

ACCESS for ELLs - Required



Assessment	ACCESS for ELLs
Description	<p>ACCESS for ELLs annually assess English learner English language Proficiency in Reading, Writing, Listening and Speaking.</p> <p>Idaho Code §33-1617 outlines the English Learner program requirements to achieve improved academic performance. Idaho Code §08.02.03. subsection 111.06.a through 111.06.m</p>
Testing Window	January-March
Subjects	English Language Proficiency (Reading, Writing, Listening, Speaking)
Required Grades	K-12
Student Population	All Identified English Learners

Websites



Contact Details



Andrew Bennett
Coordinator

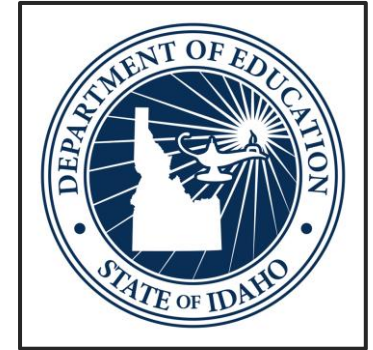
208-332-6909
abennett@sde.idaho.gov

Alternate ACCESS for ELLs - Required



Assessment	Alternate ACCESS for ELLs
Description	Administered to students in K-12 with significant cognitive impairments who meet IDAA participation criteria.
Testing Window	February-April
Subjects	English Language Proficiency (Reading, Writing, Listening, Speaking)
Required Grades	K-12
Student Population	All identified English learners who meet the IDAA participation criteria

Websites



Contact Details



Andrew Bennett
Coordinator

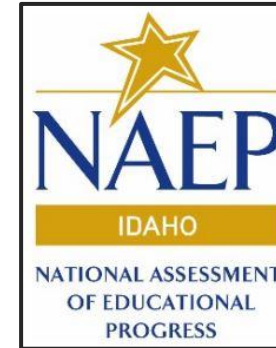
208-332-6909
abennett@sde.idaho.gov

NAEP – Required for Sampled Schools

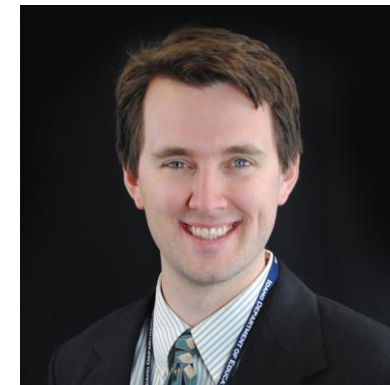


Assessment	National Assessment of Educational Progress
Description	The National Assessment of Educational Progress (NAEP) is the only assessment that measures what US students know and can do in various subjects across the nation, states, and in some urban districts. Also known as The Nation's Report Card, NAEP has provided important information about how students are performing academically since 1969.
Testing Window	January-March
Subjects	Mathematics and Reading
Required Grades	4 and 8
Student Population	All students are eligible for selection except those who take the IDAA and 1 st year English Learners.

Websites



Contact Details



Paul Kleinert, Ph.D.
Coordinator

208-332-6957
pkleinert@sde.idaho.gov

LCI - Required



Assessment	Learner Characteristics Inventory (LCI)
Description	<p>The LCI is a survey of learning characteristics of students with the most significant cognitive disabilities (SCD) who qualify for the IDAA.</p> <p>The LCI also includes the four IDAA participation criteria students must meet to qualify for participation in the IDAA. Teachers complete the LCI only once for each student.</p> <p>The LCI must be completed before students can access their IDAAs.</p>
Testing Window	January-May
Subjects	The LCI must be completed before students can access their IDAAs.
Required Grades	<p>ELA/Literacy & Math: 3-8 and 10</p> <p>Science: 5, 8, and 11</p>
Student Population	Students with the most SCD who meet all 4 participation requirements, representing about 1% of the total student population.

Websites



Contact Details



Karren Streagle, Ph.D.
Coordinator

208-332-6824
kstreagle@sde.idaho.gov

ISAT - Required



Assessment	Idaho Standards Achievement Test
Description	<p>The summative math ISAT is given at the end of the learning process and allows students to demonstrate the full-range of their knowledge, skills and abilities.</p> <p>Results from the summative assessment provide educators data on student proficiency.</p>
Testing Window	March-May
Subject	ELA, Math, and Science
Required Grades	ELA/Literacy & Math: 3-8 and 11 Science: 5, 8, and 11
Student Population	All Students

Websites



Contact Details



Brianna Lynch
Coordinator (ELA/Math)

208-332-6979
blynch@sde.idaho.gov

Kristi Pierce
Coordinator (Science)

208-332-6903
kpierce@sde.idaho.gov

IDAA - Required



Assessment	Idaho Alternate Assessment in English Language Arts/Literacy, Math, and Science
Description	The IDAA is an alternate to the ISAT taken by qualifying students with the most significant cognitive disabilities (SCD). Qualifying students that the IDAA in all content areas, not just in one content area. The Learner Characteristics Inventory (LCI) is a required component of the IDAA.
Testing Window	March-May
Subjects	ELA/Literacy, Math, & Science
Required Grades	ELA/Literacy & Math: 3-8 and 10 Science: 5, 8, and 11
Student Population	Students with the most SCD who meet all 4 of the IDAA participation criteria , representing about 1% of the total student population.

Websites



Contact Details



Karren Streagle, Ph.D.
Coordinator

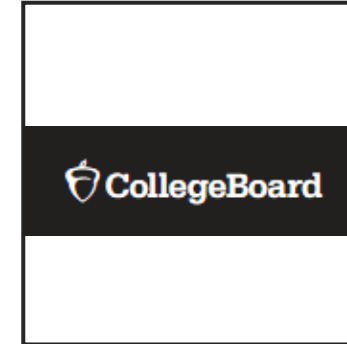
208-332-6824
kstreagle@sde.idaho.gov

SAT - Required



Assessment	SAT
Description	<p>The SAT can be used for scholarship application, course placement, and admission decisions at higher education institutions and other organizations.</p> <p>Idaho offers the SAT to the juniors at no cost to districts, schools, parents, or students.</p>
Testing Days	April-May
Subjects	Reading, Writing and Language, and Mathematics
Required Grades	11 (Grade 12 can participate if they missed the grade 11 administration)
Student Population	All Students Interested in Taking SAT

Websites



Contact Details



Ayaka Nukui
Director

208-332-6926
anukui@sde.idaho.gov



Optional Assessments

Optional to Administer. May Require Participation at Local Level.



ISAT Interim - Recommended



Assessment	Idaho Standards Achievement Test - Interims
Description	<p>The ISAT interims are administered at various points in the learning process to determine if students are on track toward proficiency.</p> <p>For ELA and Math, the ICA, SICAs, IABs, & FIABs assess various Claims and Targets to provide teachers with information to refine their instructional practices.</p>
Testing Window(s)	<ul style="list-style-type: none">• August – February (fall)• June & July (summer)
Subjects	ELA, Math, and Science
Grades	3-11
Student Population	All Students

Websites



Contact Details



Brianna Lynch
Coordinator

208-332-6979
blynch@sde.idaho.gov

Kristi Pierce
Coordinator (Science)

208-332-6903
kpierce@sde.idaho.gov

Istation Advanced Reading - Recommended



Assessment	Istation Advanced Reading
Description	Istation's advanced reading may be used to continue to monitor the student's progress following the IRI.
Testing Window	Available Monthly
Subjects	Reading
Required Grades	Grades 4 and 5
Student Population	All Students

Websites



Contact Details

Kacy Proctor
Coordinator

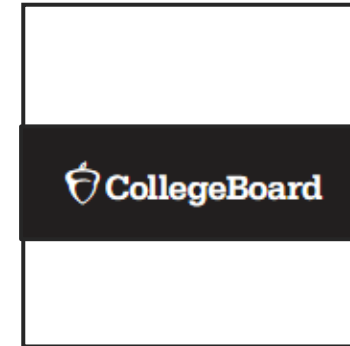
208-332-6988
mgravel@sde.idaho.gov

PSAT/NMSQT – Recommended

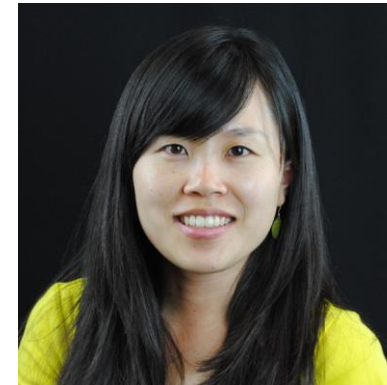


Assessment	Preliminary SAT/National Merit Scholarship Qualifying Test
Description	<p>PSAT/NMSQT is the qualifying test for entry to the National Merit Scholarship Program and connects students to College Board programs in preparation for the SAT.</p> <p>Idaho offers PSAT/NMSQT to the sophomores at no cost to districts, schools, parents, or students. *Juniors may participate in the NMSQT at their expense.</p>
Testing Days	September/October
Subjects	Reading, Writing and Language, Mathematics
Applicable Grades	10 (optional, state-sponsored) and 11 (optional, not state-sponsored)
Student Population	All Students Interested in Taking PSAT/NMSQT

Websites



Contact Details



Ayaka Nukui
Director

208-332-6926
anukui@sde.idaho.gov



Locally Selected Assessments

Required to Administer. Choose Your Assessments.

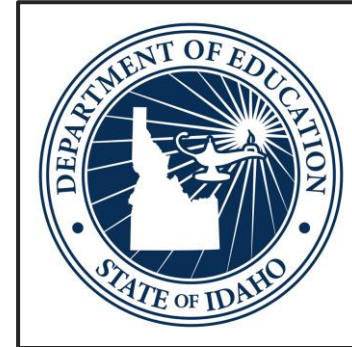


Dyslexia Assessments - Required



Assessment	Dyslexia Assessments
Description	The dyslexia screeners and diagnostic assessments must be administered per Idaho Code 33-1811.
Testing Window(s)	Locally Selected
Grades	K-5
Student Population	All Students

Websites



Contact Details

Karyn Kilpatrick-Snell
Coordinator

208-332-6967
kkilpatrick-snell@sde.idaho.gov

Civics Assessments - Required



Assessment	Civics Assessments
Description	The civics assessments must be administered per Idaho Code 33-1602 and IDAPA 08.02.03.105.04. as part of the graduation requirement.
Testing Window(s)	Locally Selected
Grades	7 and above
Student Population	All Students

Websites



Contact Details

Leslie Younger
Coordinator

208-332-6975
lyounger@sde.idaho.gov

Engagement Surveys - Required



Assessment	Student, Parent, and Teacher Surveys
Description	Student, parent, and teacher surveys must be administered per IDAPA 08.02.03.112. The survey may need to be approved by the parent and require parental consent per Idaho Code 33-6100.
Testing Window(s)	Locally Selected
Grades	K-12
Student Population	All Students, Parents, and Teachers

Contact Details

Requirement:

A&A Department
 208-332-6850
assessments@sde.idaho.gov

Student Engagement:

Michelle Clement Taylor
 Student Engagement and
 Safety Director



208-332-6906
mtaylor@sde.idaho.gov

Family Engagement:

Jill Mathews
 Family and Community
 Engagement Coordinator



208-332-6885
jmathews@sde.idaho.gov



Performance Indicators



School Identification and Report Card



Description	Identify schools for recognition and support, and report the assessment results to the public.
Timeline	June - August
Subjects	Varies
Required Grades	K-12
Student Population	All Students

Websites



Contact Details



Valerie Steffen, Ph.D.
Coordinator

208-332-6848
vsteffen@sde.idaho.gov

Report Card



- <https://idahoschools.org/>

Idaho State Department of Education

Learn more about your school or district here



Academic Measures



- All Schools
 - ISAT/IDAA Proficiency*
 - ISAT Growth/Gap Closure
 - ACCESS for ELLs Proficiency and Growth*
- Elementary Schools Only
 - IRI Proficiency
- High Schools Serving Grade 12 Only
 - Four- and Five-year Cohort Graduation Rate*

* Used to identify schools in the most need.

School Quality Measures



- All Schools
 - Communication with Parents on Student Achievement
 - Chronic Absenteeism*
- Schools Serving Grades 8/9 Only
 - Advanced Math Enrollment
- High Schools Serving Grade 12 Only
 - College and Career Readiness*
 - Credit Recovering and Accumulation

* Used to identify schools in the most need.



Updates



What's New and Same



- Spring A&A Town Hall Meeting Feedback
 - 3rd Week of May (May 13-17, 2024)
- Important Updates
 - Running List of Updates



Conclusion



What You Need to Know Today 2



- We are here to support you.
- Your role is important for the successful implementation of statewide assessment programs.
- SDE monitors and allocates resources based on performance indicators including assessment results.
- Sign up to connect with us:
 - [Website](#)
 - [Newsletter](#)
 - [Webinar](#)



Contact Us



We Are Here to Support You



CEE

- Ayaka Nukui
- 208-332-6926
- anukui@sde.idaho.gov

Civics

- Leslie Younger
- 208-332-6975
- lyounger@sde.idaho.gov

Dyslexia

- Karyn Kilpatrick-Snell
- 208-332-6967
- kkilpatric-snell@sde.idaho.gov

ELPA

- Andrew Bennett
- 208-332-6909
- abennett@sde.idaho.gov

IRI

- Kacy Proctor
- 208-332-6988
- kproctor@sde.idaho.gov

IDAA

- Karren Streagle, Ph.D.
- 208-332-6824
- kstreagle@sde.idaho.gov

ISAT

- Brianna Lynch
- 208-332-6979
- blynch@sde.idaho.gov

ISAT

- Kristi Pierce
- 208-332-6903
- kpierce@sde.idaho.gov

NAEP

- Paul Kleinert, Ph.D.
- 208-332-6957
- pkleinert@sde.idaho.gov

School Identification | Report Card

- Valerie Steffen, Ph.D.
- 208-332-6948
- vsteffen@sde.idaho.gov

Support

- Beatrice Santiago
- 208-332-6850
- bsantiago@sde.idaho.gov

Support

- Ayaka Nukui
- 208-332-6926
- anukui@sde.idaho.gov

Give Us Feedback



<https://forms.office.com/r/MzK1Zte8Tx>



Ayaka Nukui | Director

Idaho State Department of Education

Assessment and Accountability

650 W State Street, Boise, ID 83702

208.332.6926

anukui@sde.idaho.gov

<https://www.sde.idaho.gov/assessment/>



Idaho State Department of Education

DEBBIE CRITCHFIELD, SUPERINTENDENT OF PUBLIC INSTRUCTION