

# Special Education Graduation



Information on how students with disabilities are ending their special education and related services are collected for all students ages 14-21. The most positive exit reason is because a student graduated and met regular state graduation requirements.

**Why is this important?** Studies show when compared to non-graduates, youth who achieve a high school diploma are more ready for college, career, and life after high school.

## Old Calculation

### 5-year Adjusted Cohort Graduation Rate

# Students who graduated with regular requirements within 5 years (numerator)

# Students who entered HS at the same time, i.e., freshman year (denominator)

## New Calculation

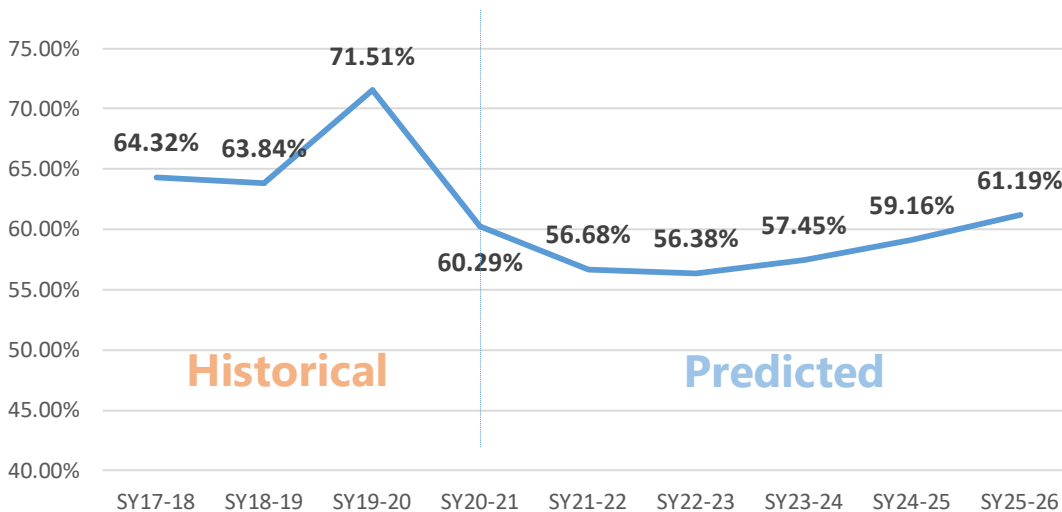
### % Exiting by Meeting Regular Graduation Requirements

# Students exiting with regular graduation requirements (numerator)

# Students exiting special education (denominator)

- Graduated with Regular Requirements
- Completed – Met Adapted Requirements
- Reached Maximum Age
- Dropped Out

## Idaho's Historical and Predicted Data



### Goal:

Increase the percentage of student graduating with regular requirements.

## System Challenges

COVID-19 related learning loss    Staffing Loss    Increased Stress    Changes in learning location    Trauma

## System Supports

Training    Collaboration    Innovation    Creative Problem-solving

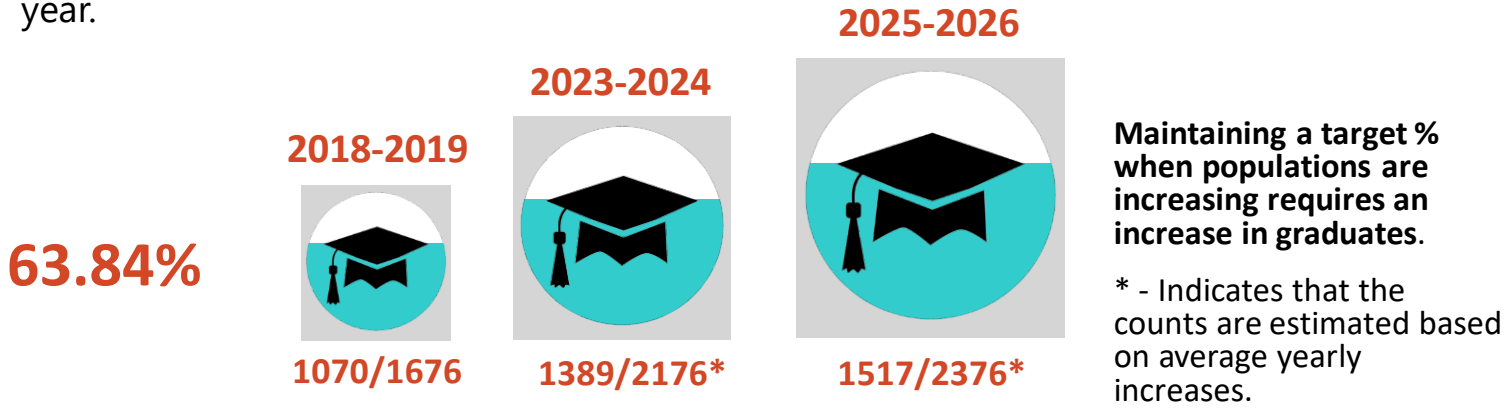
# How are the data used?

Districts or charters that are well below state targets for graduation may receive prioritization for additional or targeted supports including:

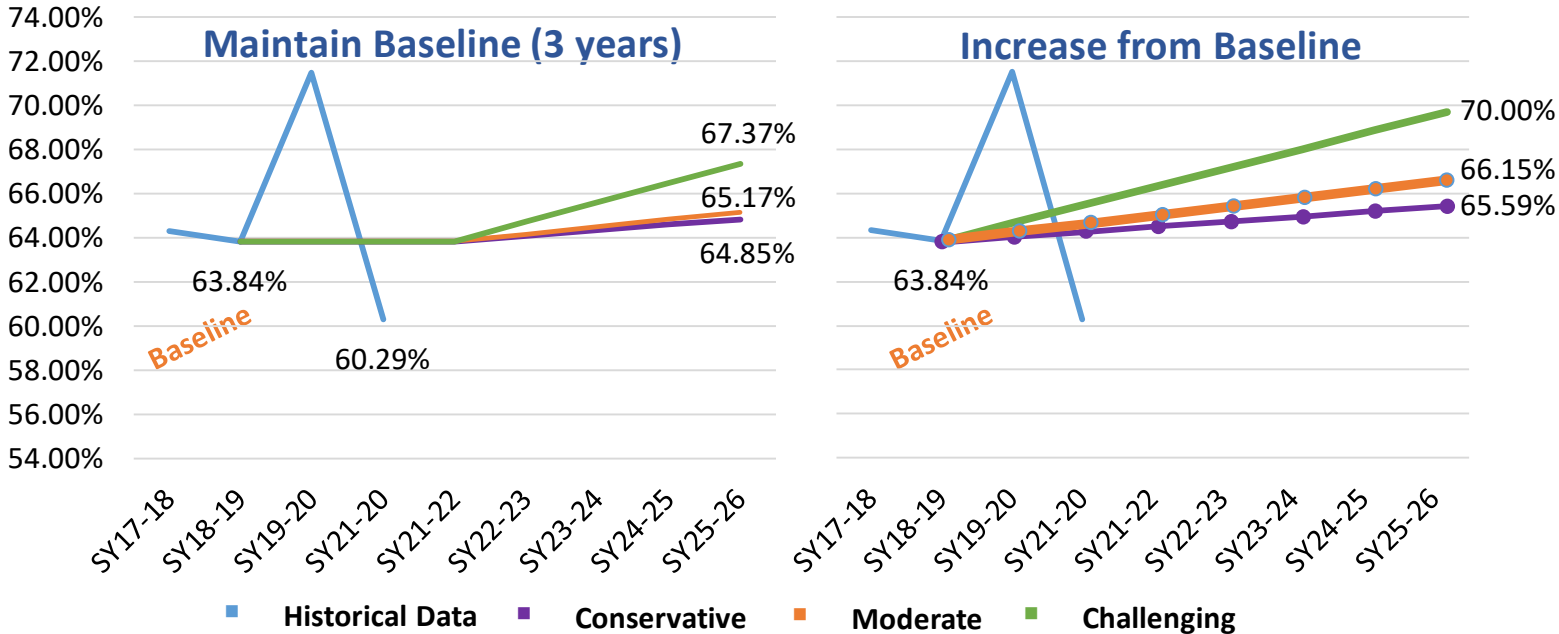
- Funding
- Training;
- Professional development;
- Improvement planning.

# How does growth affect exit?

Idaho has been growing rapidly increasing the special education population and the number of exiters. On average Idaho has increased by more than **100 exiters** every year.



# Historical Data and Optional Targets



Lasting impacts of COVID-19 on student outcomes are unknown. Should Idaho maintain targets near baseline?

**Conservative Target:** Estimated 471-488 more graduates from baseline year\*

**Moderate Target:** Estimated 491-502 more graduates from baseline year\*

**Challenging Target:** Estimated 531-593 more graduates from baseline year\*

**Note:** The target for the final reporting year must show improvement over baseline.