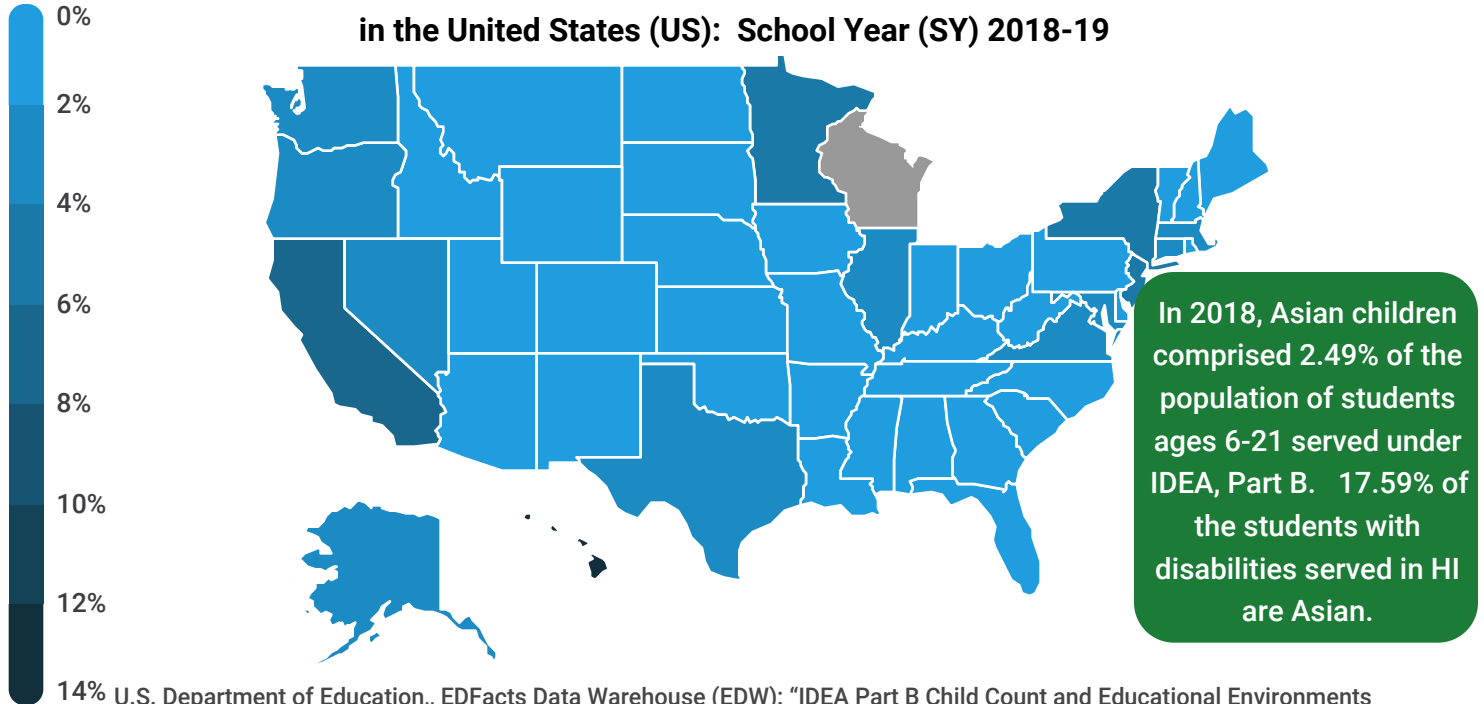




OSEP Fast Facts: Asian Children with Disabilities

For the purposes of this fact sheet, an Asian¹ student with disabilities is a child or youth having origins in any of the original peoples of the Far East, Southeast Asia, or the Indian subcontinent. This includes, for example, Cambodia, China, India, Japan, Korea, Malaysia, Pakistan, the Philippine Islands, Thailand, and Vietnam. (Does not include persons of Hispanic/Latino ethnicity) and is eligible for special education and related services under the Individuals with Disabilities Education Act (IDEA), Part B.

Percentage of Asian Students with Disabilities by State, Ages 6 to 21, Served Under IDEA, Part B, in the United States (US): School Year (SY) 2018-19



U.S. Department of Education, ED Facts Data Warehouse (EDW): "IDEA Part B Child Count and Educational Environments Collection," 2018-19. <http://go.usa.gov/xdp4T>. Data for Wisconsin was suppressed due to questionable data quality.

Percentage of Students with Disabilities who are Asian, Ages 3-5 and 6-21, Served Under IDEA, Part B in the US, Outlying Areas, and Freely Associated States: SY 2018-19



4.08%



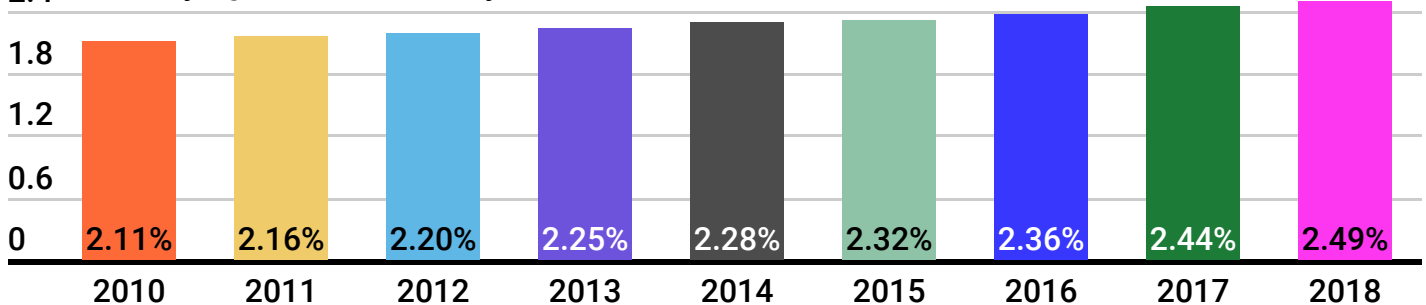
2.49%

● 3-5

● 6-21

U.S. Department of Education, ED Facts Data Warehouse (EDW): "IDEA Part B Child Count and Educational Environments Collection," 2018-19. <http://go.usa.gov/xdp4T>.

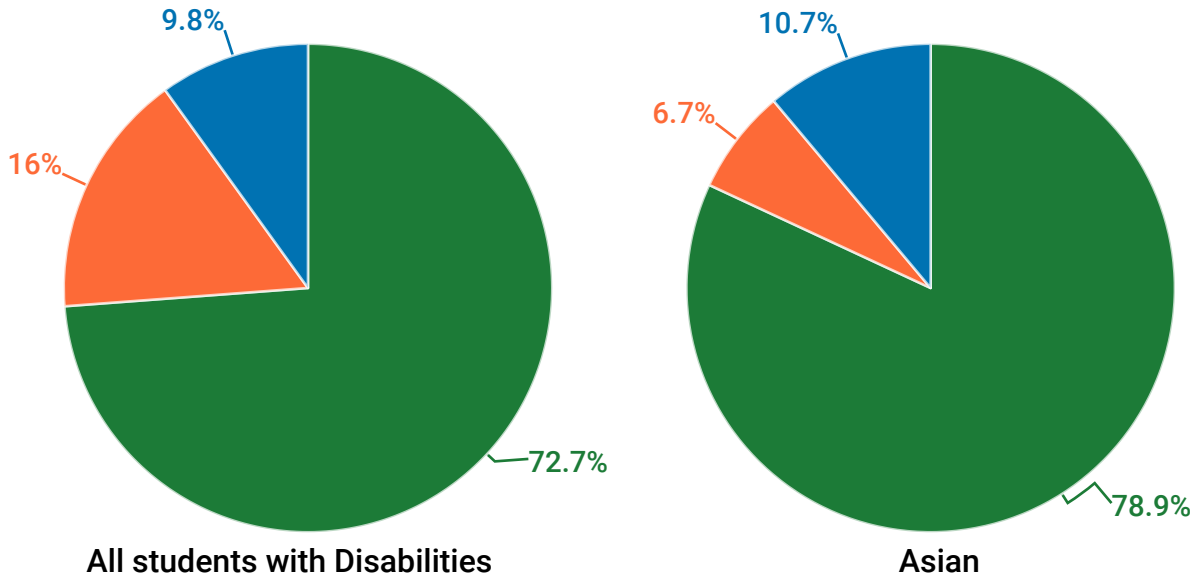
Percentage of Asian Students with Disabilities, Ages 6 to 21, Served Under IDEA, Part B in the US, Outlying Areas, and Freely Associated States: Between SY 2009-10 and 2018-19



U.S. Department of Education, ED Facts Data Warehouse (EDW): "IDEA Part B Child Count Collection" 2008-09 to 2009-10, "IDEA Part B Child Count and Educational Environments Collection" 2010-11 to 2018-19. <https://go.usa.gov/xdp4k>. Data from 2008 - 2011 includes US and Outlying areas data from 2012 - 2018 includes the US, Outlying Areas, and Freely Associated States.

Percentage of Students with Disabilities Exiting School, Ages 14 to 21, By Basis of Exit, Served Under IDEA, Part B, in the US, Outlying Areas, and Freely Associated States: SY 2017-18

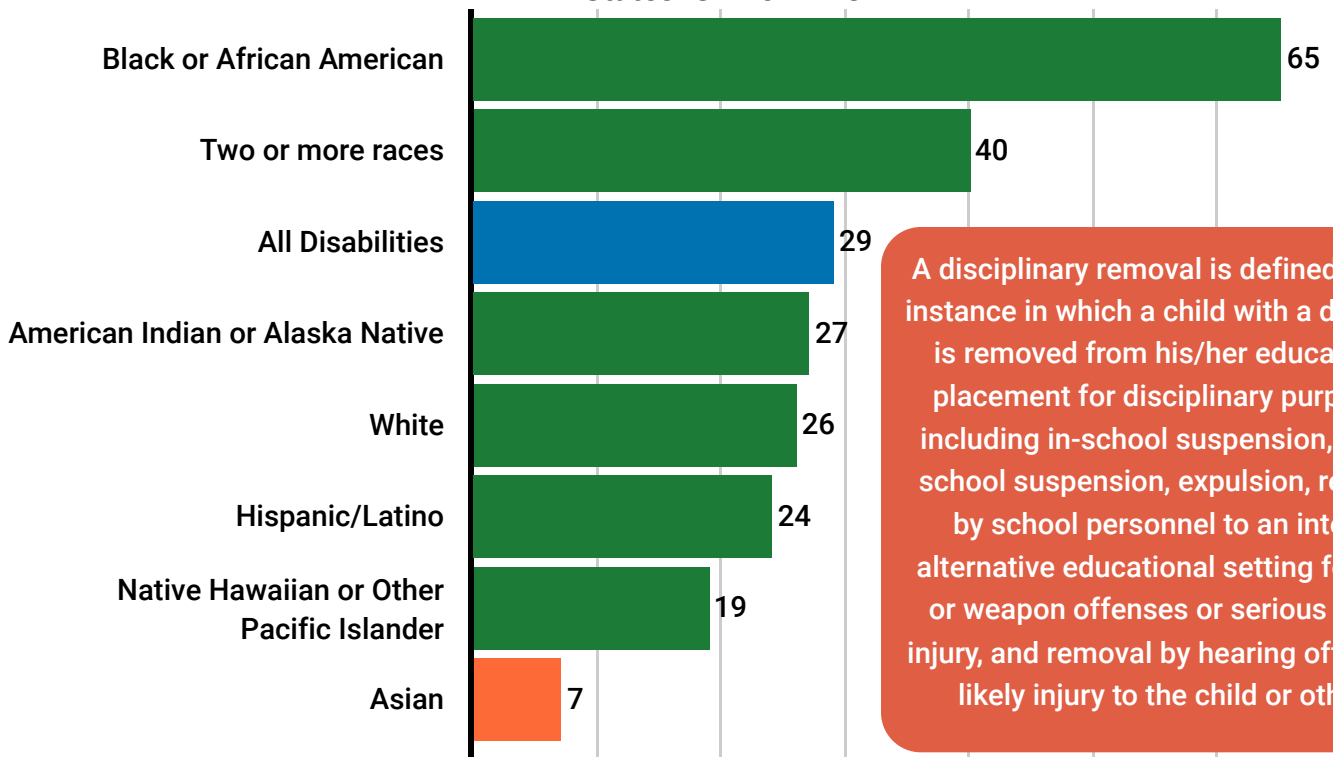
● Graduated with a regular high school diploma ● Dropped out ● Received a certificate



In SY 2017-18, Asian children with disabilities, ages 14-21, exiting school were more likely to graduate and less likely to drop out than all students with disabilities.

U.S. Department of Education, ED Facts Data Warehouse (EDW): "IDEA Part B Exiting Collection," 2017-18. Data extracted from: <http://go.usa.gov/xdp4e>. Percentages do not equal 100% due to not including the counts of children who died, or reached maximum age.

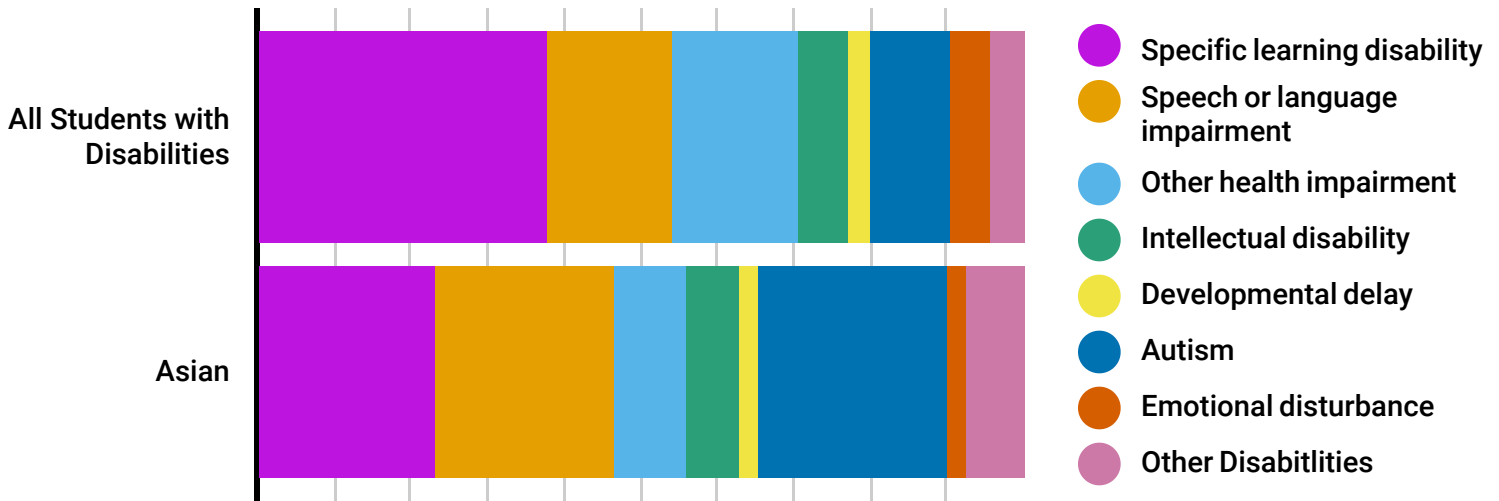
Total Disciplinary Removals Per 100 Children or Students with Disabilities, Ages 3 to 21, By Race/Ethnicity, Served Under IDEA, Part B, in the US, Outlying Areas, and Freely Associated States: SY 2017-18



A disciplinary removal is defined as any instance in which a child with a disability is removed from his/her educational placement for disciplinary purposes, including in-school suspension, out-of-school suspension, expulsion, removal by school personnel to an interim alternative educational setting for drug or weapon offenses or serious bodily injury, and removal by hearing officer for likely injury to the child or others.

U.S. Department of Education, ED Facts Data Warehouse (EDW): "IDEA Part B Discipline Collection," 2017-18. Data extracted from: <https://go.usa.gov/xG9u3>. Data for Maine, Minnesota, Montana, Vermont, Wyoming, and Wisconsin were excluded, and data for the Virgin Islands and Vermont were not available. U.S. Department of Education, ED Facts Data Warehouse (EDW): "IDEA Part B Child Count and Educational Environments Collection," 2017-18. <http://go.usa.gov/xdp6v>

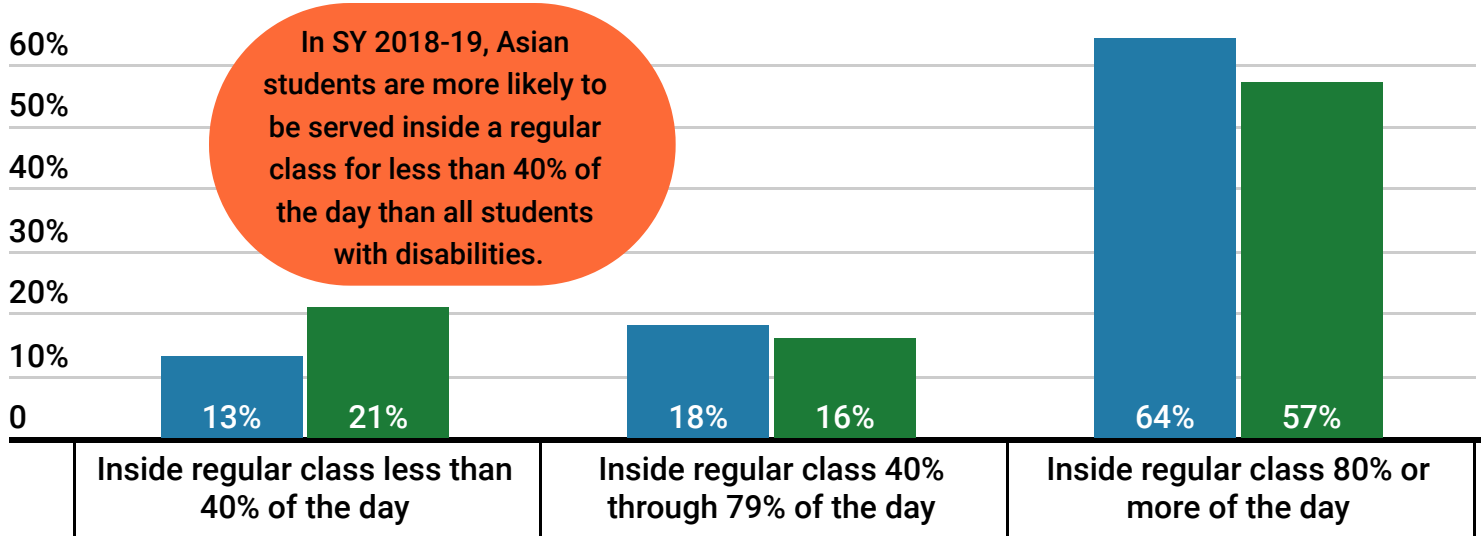
Percentage of Students with Disabilities, Ages 6 to 21, by Race and Ethnicity and Disability Category, Served Under IDEA, Part B, in the US, Outlying Areas, and Freely Associated States: SY 2018-19



In school year 2018-19, Asian students are more likely to be identified with speech or language impairment and Autism and less likely to be identified with specific learning disability than all students with disabilities.

IDEA Part B Child Count and Educational Environments for School Year 2017-2018, OSEP Data Documentation. <https://go.usa.gov/xd8WE>

Percentage of Students with Disabilities, Ages 6 to 21, By Educational Environment, Served Under IDEA, Part B, in the US, Outlying Areas, and Freely Associated States: SY 2018-19



In SY 2018-19, Asian students are more likely to be served inside a regular class for less than 40% of the day than all students with disabilities.

● All Students with Disabilities ● Asian

U.S. Department of Education, EDFacts Data Warehouse (EDW): "IDEA Part B Child Count and Educational Environments Collection," 2018-19. <http://go.usa.gov/xdp4T>. Percentages do not equal 100% due to not including the counts of children who receive services in a separate school, residential facility, homebound/hospital, or correctional facility.

December 2020

<https://www2.ed.gov/about/offices/list/osers/index.html>
<https://sites.ed.gov/idea/> <https://osepideasthatwork.org/>
<https://www2.ed.gov/programs/osepidea/618-data/state-level-data-files/index.html>



Last Updated 12/17/2020. An interactive and accessible version of this Fast Fact is available at: <https://sites.ed.gov/idea/osep-fast-facts/>